



GEVA THEATRE'S 25/26 SEASON SPONSOR

# Anastasia

*THE MUSICAL*

**MAY 27 - JUNE 28, 2026**

Book by **TERRENCE MCNALLY**

Music by **STEPHEN FLAHERTY**

Lyrics by **LYNN AHRENS**

Inspired by the **TWENTIETH CENTURY FOX MOTION PICTURES**

by special arrangement with **BUENA VISTA THEATRICAL**

From the play by **MARCELLE MAURETTE** as adapted by **GUY BOLTON**

Musical Director **DON KOT**

Choreographed by **KELLI FOSTER WARDER**

Directed by **ELIZABETH WILLIAMSON**

**Geva**  
THEATRE

Honorary Season  
Producer



# 26/27

## Subscriptions On Sale Now!



Scan this QR  
code to see the  
26/27 Phils  
Series Schedule

ANDREAS DELFS  
MUSIC DIRECTOR



# GET YOUR SEATS TODAY!

585.454.2100  
RPO.ORG



**RPO** | MUSIC THAT  
*moves.*

26/28 SEASON & SERIES  
SPONSORS:



IN LOVING MEMORY OF  
LENDRE P. LESSER



SEVERAL PERFORMANCES ARE MADE POSSIBLE BY THE NEW YORK STATE  
COUNCIL ON THE ARTS WITH THE SUPPORT OF THE OFFICE OF THE  
GOVERNOR AND THE NEW YORK STATE LEGISLATURE.

25/26 SEASON  
MEDIA SPONSORS:





# WE'VE GOT IT COVERED.

At SynchroNet, we provide everything from responsive help desk support to enterprise-grade cybersecurity, strategic planning, and cloud solutions for your small business.

We take the time to understand your industry, anticipate challenges, and implement systems that work.

One call. One team.  
Total coverage.

Scan to Book Your  
Consult Today



[WWW.SYNCHRONET.NET](http://WWW.SYNCHRONET.NET)  
716-677-2677



# Invitation to Play

***WE INVITE YOU TO***  
**COME AS YOU ARE.**

Enter the theatre as you are.  
Laugh when you feel like laughing.  
Cry when you feel like crying.  
React and respond how you need to.

***WE INVITE YOU TO***  
**FEEL WELCOME IN**  
**OUR SPACES.**

Please relax and be at home at Geva. Our space is here to welcome you and everyone in our community.

***WE INVITE YOU TO***  
**LEAN INTO YOUR**  
**DISCOMFORT.**

Theatre can entertain; however, theatre can also explore larger issues and questions. Challenge your perspective here at Geva.

***WE INVITE YOU TO***  
**BE BRAVE.**

Join us in challenging assumptions and amplifying marginalized voices. Let's create theatre that reflects the diverse experiences of our world, our country, and our region.

***WE INVITE YOU TO***  
**TELL US WHAT**  
**YOU THINK.**

Share your constructive feedback about your experience at Geva. Email us at [dialogue@gevatheatre.org](mailto:dialogue@gevatheatre.org).

***WE INVITE YOU TO***  
**BE IN COMMUNITY**  
**WITH ONE ANOTHER.**

Introduce yourself to your neighbor.  
Forge new relationships.  
We're all in this together.



# WELCOME

- 5 Welcome
  - A Message from James Haskins, Executive Director
- 6 Production Credits
- 10 A Journey to the Past
  - The History Behind *Anastasia*
- 16 Geva's 26/27 Season
- 19 Who's Who
- 27 About Geva Theatre
- 29 Mission, Vision, and Values
- 33 Thank You to Our Supporters

## THANK YOU TO OUR SPONSORS FOR *ANASTASIA: THE MUSICAL*



GEVA THEATRE'S **25/26** SEASON SPONSOR

HONORARY SEASON PRODUCER



LEAD PRODUCER

Charis & Rich  
Warshof

LEAD CO-PRODUCER



EXECUTIVE PRODUCERS



PRODUCER



MEDIA SPONSORS



Official Storage Space  
Sponsor of Geva Theatre



# 2025-2026 BOARD OF TRUSTEES

## EXECUTIVE COMMITTEE

**Jane Hasselkus**, Chair  
**Diane F. McCue**, Vice Chair  
**Tom Rogers**, Treasurer & Chair, Finance Committee  
**Helen A. Zamboni**, Secretary  
**Christina Gullo\***, Chair, Nominating & Governance Committee  
**Elizabeth M. Teall**, Chair, Development Committee  
**Wynndy R. Turner**, Co-Chair, IDEA Committee  
**Steve Metzger**, Co-Chair, IDEA Committee  
**Essie Calhoun McDavid**, At Large  
**Lisa Martinez DeVinney**, At Large

## BOARD OF TRUSTEES

Katie Baynes, Chair, Audit Committee  
Philip L. Burke  
Margaret Busch  
Christie Caldwell  
Lisa Martinez DeVinney  
Hope Drummond  
Bonnie Garner  
Richard N. Gray  
Lori Green  
Christina Gullo\*  
James Haskins, *ex officio*  
Jane Hasselkus  
Deborah L. Hughes  
Abhas Kumar  
Barbara J. LaVerdi  
Dr. Dawn Lipson  
Faheem Masood  
Diane F. McCue  
Essie Calhoun McDavid  
Steve Metzger

Dr. Miriam M. Moore  
Robert Neale  
Rhonda Noto  
Jeffrey Paille  
Shree Pandya  
Aqua Y. Porter  
Tom Rogers  
Eileen Amy Ryan  
Jean Gordon Ryon  
Laura J. Sadowski  
Dr. Elaine Spaul  
Elizabeth M. Teall  
Bijal Thakkar  
Wynndy R. Turner  
John C. Williams  
Elizabeth Williamson,  
*ex officio*  
Helen A. Zamboni

## HONORARY TRUSTEES

Dennis Bassett\*  
Helen H. Berkeley\*

Peggy Boucher  
Stephanie M. Caffera  
Sergio Esteban\*  
David Fiedler\*  
Ronald H. Fielding  
Betsy T. Friedman\*  
Patrick Fulford\*  
Joanna M. Grosodonia\*  
Tom Hildebrandt  
Maureen D. Holtzman+  
John F. Kraushaar\*  
Carol Love\*  
Peter Messner\*  
Michael B. Millard\*  
Emily Neece\*  
Nannette Nocon  
David Perlman  
Paul Seidel  
Maggie Symington\*  
Linda Cornell Weinstein\*  
Deborah Wilson

Trustees are volunteers and receive no compensation.

\*Indicates Former Board Chair +Indicates Deceased

## TICKETS

Tickets can be purchased online at [GevaTheatre.org](http://GevaTheatre.org), or by phone at 585-232-4382.

### Box Office Hours:

#### Performance Weeks:

Monday: CLOSED

Tuesday-Saturday: Noon-8:00PM

Sunday: Noon - 7:00pm

#### Non-performance Weeks:

Sunday & Monday: CLOSED

Tuesday-Saturday: Noon-6:00PM

## GROUP RATES

Savings of up to 35% off regular ticket prices.

Available for groups of 10 or more.

Call our Sales Manager at (585) 420-2090, or email [Groups@GevaTheatre.org](mailto:Groups@GevaTheatre.org) for more information.

## STUDENT RUSH TICKETS

Available from \$20 for all non-sold out performances, beginning 2 hours prior to curtain time. Students must present valid ID. One ticket per person.

# A MESSAGE FROM GEVA'S LEADERSHIP

With Geva's production of *Anastasia*, Artistic Director Elizabeth Williamson takes her own journey to the past to revisit this adventurous, heartwarming musical for our Rochester audience. Elizabeth served as Dramaturg on the original production, which premiered at Hartford Stage in Connecticut ten years ago under the direction of Darko Tresnjak. The production subsequently moved to Broadway in April 2017 and has since enjoyed countless productions across the country and around the world.



The mystery and romance surrounding the survival of the youngest daughter of the Romanovs have inspired multiple fictional accounts of Anastasia's escape during the Russian Revolution. Drawn primarily from claims of real-life Anastasia imposter, Anna Anderson, the fantastical story has been imagined and re-imagined for literary publication, film, and theatre. The musical expands upon the 1997 animated film and the 1956 Bergman film, which was in turn adapted from a 1952 French play. Needless to say, the myth of Anastasia has captured the imagination of storytellers and audiences for decades.

The musical fable invites us into the hopeful and determined quest of a could-be princess, who seeks to reconcile her past, and fulfill her dreams to choose her future. Anya has become iconic among fairy tale princesses of stage and screen as a flesh and blood heroine who charts her own journey, facing deceit and adversity, while holding hope in her heart at every step.

Both the animated film and the stage musical of *Anastasia* feature songs by one of the greatest teams in contemporary musical theatre, composer Stephen Flaherty and lyricist Lynn Ahrens. They were joined by renowned playwright Terrence McNally to write the book for the stage musical. We lost McNally near the outset of the pandemic. His brilliance with Ahrens and Flaherty lives on not only through our production of *Anastasia*, but also through the current critically acclaimed Broadway revival of *Ragtime*.

Our production of *Anastasia* would not be possible without the incredibly generous support of our producers and sponsors. We are so grateful to 2025-26 Season Sponsor ESL Federal Credit Union, Honorary Producer Dr. Dawn Lipson, Lead Producers Charis and Rich Warshof, Lead Co-Producer Vision Automotive Group, Executive Producers Harter Secret & Emery LLP and Nixon Peabody, Producer Brighton Securities, Media Sponsors News 10 and Warm 101.3, and Official Storage Space Sponsor Buckingham Properties.

**Now, join us on our collective journey to the  
past to lead us to a brighter future!**

James Haskins  
Executive Director

# PRODUCTION CREDITS



**ELIZABETH WILLIAMSON**  
*Artistic Director*

**JAMES HASKINS**  
*Executive Director*

Presents

## ANASTASIA: THE MUSICAL

Book by **TERRENCE MCNALLY**

Music by **STEPHEN FLAHERTY**

Lyrics by **LYNN AHRENS**

Inspired by the Twentieth Century Fox Motion Pictures  
by special arrangement with Buena Vista Theatrical  
From the play by Marcelle Maurette as adapted by Guy Bolton

Directed by **ELIZABETH WILLIAMSON**‡

Music Direction by **DON KOT**

Choreography by **KELLI FOSTER WARDER**‡‡

*Scenic Design*  
**NICK VAUGHAN**†

*Costume Design*  
**VALÉRIE THÉRÈSE BART**†

*Lighting Design*  
**BENTLEY HEYDT**†

*Sound Design*  
**ANDREW MARK  
WILHELM**

*Wig, Hair, & Makeup Design*  
**SARAH NORTON**

*Production Stage Manager*  
**KEVIN GREGORY  
DWYER**\*

*Assistant Stage Managers*  
**SHANNON TOOT**\*  
**JOSH LAU**\*

*Casting Director*  
**CALLERI JENSEN  
DAVIS**

*Associate Producer*  
**JASMINE B. GUNTER**

*Production Manager*  
**JOSEPH BIAGINI**

*Managing Producer*  
**THALIA SCHRAMM**

### ACKNOWLEDGEMENTS

ANASTASIA is presented by arrangement with Concord Theatricals. [www.concordtheatricals.com](http://www.concordtheatricals.com)

Geva is a proud partner of  in the Geva-Brockport Alliance.

A Spanish-language version of this program is available at the Box Office and online at [GevaTheatre.org](http://GevaTheatre.org).  
Translator: Marisol Galarza-Ruiz.

# PRODUCTION CREDITS

## CAST

*(In order of appearance)*

Dowager Empress.....	Debra Cardona*
Little Anastasia.....	Mila DeBenedetto/Mika Spindel
The Tsarina.....	Brian Vaughn*
The Tsar.....	Tiffany Topol*
Gleb.....	Adam Rennie*
Dmitry.....	Jeffrey Kringer*
Vlad.....	Brian Vaughn*
Anya.....	Quynh-My Luu*
Marfa.....	Bianca Gabrielle Rivera-Irions*
Paulina.....	Ally Wolfe
Dunya.....	Kaitlyn DuBeau
Count Ipolitov.....	Tyler Jimenez*
Smoker.....	Mark Ryan Leavitt
Gorlinsky.....	Tyler Jimenez*
Lily.....	Tiffany Topol*
Count Leopold.....	Tyler Jimenez*
Sergei.....	Mark Ryan Leavitt
Count Gregory.....	Mark Ryan Leavitt
Countess Gregory.....	Kaitlyn DuBeau
Ensemble.....	Taelor Bailey, Debra Cardona*, Mila DeBenedetto, Kaitlyn DuBeau, Tyler Jimenez*, Jeffrey Kringer*, Jeremy Lavarello, Mark Ryan Leavitt, Adam Rennie*, Bianca Gabrielle Rivera-Irions*, Mika Spindel, Shane Patrick Taylor, Tiffany Topol*, Brian Vaughn*, Ally Wolfe
Swings.....	Taelor Bailey, Shane Patrick Taylor

## UNDERSTUDIES

For Anya, Kaitlyn DuBeau; For Vlad, Tyler Jimenez\*;  
For Count Leopold, Jeremy Lavarello; For Gleb, Mark Ryan Leavitt;  
For Lily, Bianca Gabrielle Rivera-Irions\*; For Dmitry, Shane Patrick Taylor

## TIME & SETTING

1906, 1917, and 1927. Saint Petersburg and Paris

## APPROXIMATE RUN TIME

2 hours, including one 15-minute intermission

# PRODUCTION CREDITS

## ADDITIONAL PRODUCTION CREDITS

Assistant Lighting Design .....	Erica Lauren Maholmes
Intimacy Choreographer.....	Sara Bickweat Penner
Youth Supervisor.....	Maddie D. Jones
Substitute Youth Supervisor .....	Aly Moony
Substitute Rehearsal Stage Manager .....	JuanCarlos Contreras*
Substitute Performance Stage Manager .....	Kate Duprey*
Substitute Keyboard.....	Julie Covach
Sign Interpretation Coordinator .....	Luane Haggerty, Ph.D
Director of Artistic Sign Language .....	Eddie Swayze
Sign Interpreters.....	Samantha Geffen, Ben Leyer
Open Captioner.....	Samantha Geffen
Audio Describer Program Coordinator and Consultant.....	Rene Latorre
Audio Describer.....	David Baxter
Overhire Carpenter.....	Hawke Boyd
Overhire Craftsperson .....	Wyatt Kim
Overhire Deck Crew.....	Isabella Smith, Caroline Stacey, PJ Wright
Overhire Follow Spot Operator .....	Emory Miller, Nick Ordish
Overhire Painter .....	Sam Kaplan
Overhire Properties .....	Butch Kane, Rachel Shames, Isabella Smith
Overhire Wardrobe Crew.....	Sarah Johnson, Kayden McLeod, Mars Madison, Jasper McRae
Overhire Wigs & Wardrobe Crew .....	Amanda Walter, Madeleine Winter
Stage Management Intern.....	Zach Bowman

Special thanks to the Maker Space at SUNY Potsdam for their generous support in 3D printing the Russian military metals used in this production.

## AFFILIATIONS



\* Members of Actors' Equity Association, the Union of Professional Actors and Stage Managers in the United States.

‡ Indicates members of the Stage Directors and Choreographers Society, an independent national labor union.



† The scenic, costume, lighting and sound designers in LORT Theatres are represented by the United Scenic Artists, Local USA-829 of the IATSE.



Geva Theatre operates under agreements between the League of Resident Theatres (LORT), a consortium of regional theatres throughout the nation; Actors Equity Association (AEA), the union of professional actors and stage managers in the United States; the Stage Directors and Choreographers Society (SDC), an independent national labor union; and United Scenic Artists (USA), a union of scenic, costume, lighting and sound designers.



Geva Theatre is a member of Theatre Communications Group (TCG), the national service organization for the American Theatre.



Open captioning services provided, in part, by a grant from NYSCA & TDF'S TAP+ program.



Please note that the taking of photographs or use of recording devices during the performance is not permitted. Cell phones and all other electronic devices are strictly prohibited in the theatre.

# PRODUCTION CREDITS

## ORCHESTRA

Piano/Conductor.....	Don Kot
Keyboard II.....	Joseph P. Janover
Bass.....	Josh Kerr
Violin.....	Margaret Leenhouts
Cello.....	Brian Donat
Drums/Percussion.....	Aaron Staebell

## MUSICAL NUMBERS

### ACT I

"Prologue: Once Upon a December".....	The Dowager Empress & Little Anastasia
"The Last Dance of the Romanovs".....	Ensemble
"A Rumor in St. Petersburg".....	Dmitry, Vlad & Ensemble
"In My Dreams".....	Anya
"The Rumors Never End".....	Gleb & Ensemble
"Learn to Do It".....	Anya, Vlad & Dmitry
"Learn to Do It (Reprise)".....	Anya
"The Neva Flows".....	Gleb & Anya
"The Neva Flows (Reprise)".....	Male Ensemble
"My Petersburg".....	Dmitry & Anya
"Once Upon a December".....	Anya & Ensemble
"A Secret She Kept".....	Anya
"Stay, I Pray You".....	Count Ipolitov, Anya, Dmitry, Vlad & Ensemble
"We'll Go From There".....	Vlad, Anya, Dmitry & Ensemble
"Travelling Sequence/Still".....	Gleb, Gorfinsky, Anya, Dmitry & Vlad
"Journey to the Past".....	Anya

### ACT II

"Paris Holds the Key".....	Vlad, Dmitry, Anya & Ensemble
"Paris Holds the Key (Reprise)".....	Anya
"Close the Door".....	The Dowager Empress
"Land of Yesterday".....	Lily & Ensemble
"The Countess and the Common Man".....	Vlad & Lily
"Land of Yesterday (Reprise)".....	Gleb
"A Nightmare".....	Romanov Children, Tsar & Tsarina
"In a Crowd of Thousands".....	Dmitry & Anya
"Arriving at the Ballet/Meant to Be".....	Vlad
"Quartet at the Ballet".....	Anya, Dmitry, The Dowager Empress & Gleb
"Everything to Win".....	Dmitry
"Once Upon A December (Reprise)".....	Anya & The Dowager Empress
"The Press Conference".....	Lily, Vlad & Ensemble
"Everything to Win (Reprise)".....	Anya & Gleb
"Still/The Neva Flows (Reprise)".....	Gleb, Anya & Ensemble
"Finale".....	The Dowager Princess, Gleb & Ensemble

# A JOURNEY TO THE PAST:

## *The History Behind Anastasia*

By Sarah Hartmann

### Imperial Russia and the Romanov Family

For more than three centuries, Russia was governed by one of the most enduring dynasties in human history. The Romanovs came to power in 1613, and from their seat in the magnificent imperial capital of St. Petersburg they expanded their realm until it stretched across Eastern Europe and Asia to cover roughly one-sixth of the earth's land surface. The Tsar who ruled this empire did so with absolute authority, considered by the Russian Orthodox Church and by millions of his subjects to be God's representative on earth - a figure set apart from ordinary humanity by birth, by ritual, and by the weight of centuries of tradition.

Nicholas II, who ascended the throne in 1894, was the last man to hold the position of Tsar. He and his wife Alexandra - a German-born princess - were devoted parents to five children: Olga, Tatiana, Maria, Anastasia, and Alexei, the youngest, who suffered from severe hemophilia. Theirs was a court of legendary opulence - elaborate balls, dazzling ceremonies, a life of almost incomprehensible grandeur. The family that inhabited that world also shared a passion for photography, filling album after album with picnics and snowball fights, holidays on the imperial yacht, dogs underfoot. Anastasia, the fourth child, was known for her mischief, her wit, and a stubborn liveliness that those around her found impossible to ignore. They were, in those photographs, unmistakably human.



Nicholas II and family, 1914. Courtesy of *Encyclopaedia Britannica*.

It was a world that looked, from the inside, like it might last forever. It would not.

### Revolution and Collapse

The fractures had been building for years - in the poverty of the countryside, in the vast inequality between the lives of the nobility and the lives of ordinary Russians, in a government that celebrated its own grandeur while failing to address the most basic needs of its people. The catastrophe of the First World War accelerated everything. Millions of Russian soldiers died in a conflict that grew increasingly unwinnable, while at home food grew scarce and desperation deepened. Nicholas II, who had taken personal command of the army, had bound his fate - and the fate of the imperial system - to a war Russia could not win.



Vladimir Lenin, 1918.  
Photo: AFP/Getty Images

In early 1917, mass protests erupted in the capital and the army began refusing orders to fire on its own people. Within days, the machinery of the imperial state had simply stopped working. Nicholas II abdicated in March, ending three hundred years of Romanov rule in a matter of weeks. A provisional government attempted to fill the vacuum, but it too was swept aside when Vladimir Lenin's Bolsheviks seized power in October of that same year. The revolution was not a single event – it was a cascade of uprisings, power struggles, and ideological battles that remade Russia from the ground up, with breathtaking and terrible speed.

The imperial family did not survive it. Held under arrest and moved eastward across the country as civil war spread, they vanished from public life. In the summer of 1918, they were killed, and the Soviet government buried the truth along with the bodies.

## Exile, Paris, and the Mystery of Anastasia

In the years that followed, over a million Russians fled the country, scattering across Europe in waves of displacement that would reshape the continent. Paris became the undisputed heart of Russian exile life – a city within a city, where the language, the faith, and the memory of a vanished world were kept deliberately, stubbornly alive. Those who arrived carried with them not just their belongings but their identities, their histories, and an unshakeable belief that one day, somehow, they would return. For most, that day never came.

For years, the mystery of what had happened to the imperial family remained unsolved. When remains were finally recovered outside Yekaterinburg, the world learned what most had feared – but the accounting was not complete. Anastasia was not buried among them.

In the silence that surrounded that absence, a question took hold: *had she survived?*

It was not only the exiles who asked – it was the world. Women came forward claiming to be her. Courts heard their cases. Newspapers followed every development. But the fascination with Anastasia went deeper than any claimant could explain – it tapped into memory, imagination, and a need felt by anyone who has ever lost something to believe that someone, somewhere, was saved. That something once thought gone could return. Anastasia, whose name, incidentally, means *resurrection*, became the emblem of that hope and an inspiration to storytellers for years to come.



Anastasia. Courtesy of  
*Encyclopedia Britannica*

# Historical Timeline of Russia, 1894–1927

- **1894** Nicholas II becomes Tsar after his father dies. He marries Alexandra, a princess from Germany. Many worry he is not ready to lead such a vast and divided empire.
- **1896** Nicholas II is crowned Emperor of Russia in Moscow.
- **June 1901** Anastasia is born – the fourth of Nicholas and Alexandra’s five children.
- **January 1905** Bloody Sunday. Thousands of workers march to the Tsar’s palace in St. Petersburg to ask for better wages and working conditions. Soldiers fire on the crowd, killing hundreds. Much of Russia turns against the Tsar.
- **October 1905** Facing growing unrest, Nicholas II promises the Russian people an elected parliament – called the Duma – and basic civil rights. Many feel he does not keep his word.
- **August 1914** World War I begins. Russia joins the fighting. Millions of soldiers die. Back home, food runs short and poverty deepens.
- **September 1915** Nicholas II takes personal command of the Russian Army. As the war goes badly, people blame the Tsar directly.

- 
- **March 1917** After years of war, hunger, and broken promises, the people revolt. Crowds flood the streets of the capital. Soldiers refuse orders to stop them. Faced with no support, Nicholas II gives up the throne – ending three hundred years of Romanov rule. A temporary government takes over.
  - **April 1917** Vladimir Lenin – the leader of the Bolsheviks, a revolutionary group that wants to abolish the Tsar’s system entirely and hand power to workers – returns from exile abroad and immediately calls for the new government to be overthrown.
  - **August 1917** The imperial family is arrested. They are moved under guard across Russia – first to the remote city of Tobolsk in Siberia, then to Yekaterinburg in the Ural Mountains – as the country descends into civil war.
  - **October 1917** The Bolshevik Revolution. Lenin’s forces storm the seat of government and seize power. Russia will never be the same.
  - **March 1918** The new Communist government moves the capital from St. Petersburg to Moscow.
  - **July 17, 1918** Nicholas II, Alexandra, and their five children – including seventeen-year-old Anastasia – are killed by Bolshevik forces in the basement of a house in Yekaterinburg. The bodies are buried in secret.

- 
- **1918–1921** Civil war. The Bolsheviks defeat their opponents and tighten their grip on Russia.
  - **1920–1921** Over a million Russians flee the country. Many settle in Paris, hoping one day to return. Most never do.
  - **December 1922** The Soviet Union is officially established.
  - **January 1924** Lenin dies. St. Petersburg – the glittering imperial capital the Romanovs built – is renamed Leningrad in his honor.
  - **1927** Stalin takes firm control of the Soviet Union.

# We make office leasing simple



## MOVE-IN READY UNITS

Rochester: 4 convenient suburban locations (585) 248-0990

Buffalo: 7 convenient suburban locations (716) 626-9764

\$500 referral program, Visit [Northforest.com/Refer](http://Northforest.com/Refer)

[northforest.com](http://northforest.com)



PROFESSIONAL • MEDICAL • DENTAL



*Mindy Elniski, CPA*



*J. Kincaid, CPA*



*Brian Moran, CPA*

**Professionals that understand your needs and get to know you.**

We Are **Trusted Advisors.**

We Are **Tax Strategists.**

We Are **Assurance Professionals.**

We Are The **Alternative Accounting Solution**



**130 Bryant Woods South, Amherst**  
**Office: 716-204-9000**  
**[lvbwcpa.com](http://lvbwcpa.com)**



*Kara Whitmore, CPA*



*Carolyn D. Valenti, CPA*



*Daniel B. Weintraub, CPA*



IT'S TIME TO TAKE YOUR BOW!

# ENCORE

THE 25/26 SEASON SUMMER SOIREE

June 13, 2026 | 6 PM | Geva Theatre

Join us for a vibrant night of performance, connection, and celebration while reliving highlights from our 25/26 Season and get an exclusive first look at next year's shows!

Share great food and beverage while helping sustain Geva's Connectivity programs, supporting Education, Engagement, and Accessibility throughout our community.

**GET YOUR TICKETS NOW**

by scanning the QR code with your phone's camera, or by visiting [gevatheatre.org/encore](https://gevatheatre.org/encore)



# MUSIC COMES TO LIFE ON STAGE

SPRING CABARET

## Simple Little Things: with Olivia Hernandez



**JUN 25 - 27 2026 | FIELDING STAGE**

In this heartfelt solo cabaret, Broadway's Olivia Hernandez brings to life songs by Broadway and American Songbook icons including Richard Rodgers, Kander & Ebb, William Finn, Johnny Mercer, and more. *Sponsored in part by John C. Williams*

**Tickets are \$45, or \$40 for Geva Subscribers (includes fees).**

SUMMER CONCERTS

## ELVIS MY WAY BRANDON BENNETT

AN ARTISTS LUNGE LIVE PRODUCTION



**JUL 9 - 19 2026 | WILSON STAGE**

Celebrate the King of Rock 'n Roll with internationally acclaimed touring star Brandon Bennett.

## GET HAPPY ANGELA INGERSOLL SINGS JUDY GARLAND

AN ARTISTS LUNGE LIVE PRODUCTION



**JUL 23 - AUG 2 2026 | WILSON STAGE**

Backed by a dynamite band, Ingersoll delivers virtuosic vocals, passionate storytelling, humor, and heart.

**Ticket Prices start at \$28 (includes fees).**

**Purchase both summer concerts and save!\***

PRESENTED BY

*Eileen Amy Ryan*

— Charitable Fund —

\*Geva Subscribers save 10% when purchasing one show OR 20% when purchasing both shows together. Not a subscriber? You can still save 10% when you buy both shows at the same time. Discounts are automatically applied at checkout using your patron account at GevaTheatre.org, or call our Box Office at 585-232-4382 to purchase.



CEVA THEATRE'S 26/27 SEASON SPONSOR

# ANNOUNCING GEVA'S

*Subscribe and Save!*

## A CHORUS LINE

SEP 09 – OCT 11

2026 | WILSON STAGE

Conceived and Originally Directed and Choreographed by MICHAEL BENNETT | Book by JAMES KIRKWOOD and NICHOLAS DANTE  
Music by MARVIN HAMLISCH | Lyrics by EDWARD KLEBAN  
Co-Choreographed by BOB AVIAN | Directed by ALAN PAUL  
A Co-Production with BARRINGTON STAGE COMPANY



## TOPDOG/ UNDERDOG

OCT 13 – NOV 22

2026 | FIELDING STAGE

By SUZAN-LORI PARKS  
Directed by JEFFREY L. PAGE

PATRICK PAGE  
**ALL THE DEVILS  
ARE HERE**  
HOW SHAKESPEARE INVENTED THE VILLAIN

JAN 13 – JAN 31

2027 | WILSON STAGE

Created and Performed by PATRICK PAGE  
Directed by SIMON GODWIN  
AN OCTOPUS THEATRICALS PRODUCTION



## Million Dollar ★ ★ Quartet ★ ★

FEB 23 – MAR 21

2027 | WILSON STAGE

Book by COLIN ESCOTT and FLOYD MUTRUX  
Original Concept and Direction by FLOYD MUTRUX  
Inspired by ELVIS PRESLEY, JOHNNY CASH,  
JERRY LEE LEWIS and CARL PERKINS  
Directed by SARAH HARTMANN

# 26/27 SEASON

Visit [GevaTheatre.org](http://GevaTheatre.org) to Learn More!



## PURPOSE

APR 06 – APR 25

2027 | WILSON STAGE

By BRANDEN JACOBS-JENKINS

Directed by AMINA ROBINSON

A Co-Production with PHILADELPHIA THEATRE COMPANY

## Laughs in Spanish

APR 27 – JUN 06

2027 | FIELDING STAGE

By ALEXIS SCHEER

A Co-Production with CITY THEATRE

## THE DA VINCI CODE

MAY 26 – JUN 27

2027 | WILSON STAGE

Adapted by RACHEL WAGSTAFF and DUNCAN ABEL

Based on the Novel by DAN BROWN

Directed by ELIZABETH WILLIAMSON

A Co-Production with BERKSHIRE THEATRE GROUP

### SPECIAL PROGRAMMING

ESL  
PRESENTS

## A Christmas Carol

NOV 18 – DEC 27

2026 | WILSON STAGE

By CHARLES DICKENS | Adapted by HARRISON DAVID RIVERS

In Collaboration with SALLY LOBEL

Original Direction by ELIZABETH WILLIAMSON

# SUBSCRIBE TO GEVA TODAY!

Catch your favorite productions with plenty of ways to save

## One Geva

Enjoy every One Geva production in our season at an incredible price, with savings of up to 60% off regular single ticket prices!

Experience all 7 One Geva productions, starting at **\$222**



## Flex

Mix & march One Geva productions to create a season that's totally your own! Choose from a 4-, 6-, or 8-pack.

4-Pack Flex, **\$284** (Seniors **\$260**)

6-Pack Flex, **\$425** (Seniors **\$389**)

8-Pack Flex, **\$567** (Seniors **\$519**)



## NextGenGeva

Members ages 20 to 40 can access savings to all One Geva productions!

For a \$30 one-time joining fee, members receive up to two tickets per show at \$15 off each—covering the cost of membership with your first pair of tickets.



Unlock savings today! Call Geva's Box Office at 585-232-4382, or visit [GevaTheatre.org/Subscriptions](http://GevaTheatre.org/Subscriptions) to learn more.

## CAST

### TAELOR BAILEY (*Ensemble/ Swing*)



(she/her) is excited to be making her Geva debut in this production of *Anastasia*. She just finished her sophomore year at Nazareth University, and will be studying abroad in London next semester to study Musical Theatre. Taelor is grateful to her parents for supporting her, and gives thanks to God for giving her the ability to follow her dream. This summer has been full of amazing opportunities for her, and she is grateful to everyone on the Geva team for giving her the opportunity to perform on their stage. Enjoy the show!

### DEBRA CARDONA (*Dowager Empress/ Ensemble*)



(she/her) most recently appeared on Broadway as Mrs. Meeker in *Funny Girl*, off-Broadway in *Morning's at Seven* and *The Gardens of Anuncia*, and on tour with *On Your Feet* (Abuela Consuelo) and *Mary Poppins* (Miss Lark). Regional credits include *Titanic* at Ogunquit Playhouse (Ilda Straus), *The Light in the Piazza* at Pioneer Theater Company (Signora Naccarelli), and *In the Heights* at Portland Center Stage (Abuela Claudia). Her TV credits include *Crazy Ex-Girlfriend* (Hector's Mom), *Scandal*, *Pose*, and *Rent: Live*. Debra's voice can be heard in video games, including: *South of Midnight*, *Destiny 2*, and *World of Warcraft*. She can be heard at EPCOT in Disney World as the narrator of the fireworks/laser show *Luminous*. website: [debracardona.com](http://debracardona.com). Instagram: @DebraCardona

### MILA DEBENEDETTO (*Young Anastasia/ Alexei/ Ensemble at Certain Performances*)



(she/her): Mainstage Credits: *Dr. Seuss' How the Grinch Stole Christmas* (Cindy Lou-Hoo) at OFC's Broadway in Brighton. Other Credits: *Once Upon a One More Time* (Girl), *Anastasia* (Young Anastasia), *The Sound of Music* (Gretl), *Annie Kids* (Molly), *High School Musical Jr.* (Cyndra), *Alice in Wonderland Jr.* (Small Alice), *Finding Nemo Jr.* (Squirt) at OFC Creations Theater Center. Film credits: *New England Toys* (Young

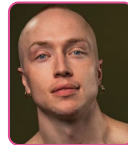
Girl); *Sticky Hand Standoff*, RIT Capstone Film (Danny); *There's No Place Like Christmas*, Great American Family Network (Anna's Daughter); *Time Capsule*, RIT Capstone Film (Soph). Mila is thrilled to make her Geva debut in *Anastasia*, and she would like to thank her family and friends for their love and support!

### KAITLYN DUBEAU (*Ensemble/ U/S Anya*)



(she/they) is so excited to perform again at Geva Theatre! She studied at Nazareth University where she graduated with a BFA in Musical Theatre and a minor in Dance. She is so grateful to be given the opportunity to work with this amazing team, and to work on such a wonderful show that she holds dear to her heart! Her favorite/recent theatre credits include - Lady Capulet (*Romeo & Juliet*), Ensemble/U/S Carole King (*Beautiful*), U/S Ocean/Jane Doe (*Ride The Cyclone*), Ensemble/U/S Hannah (*Spitfire Grill*), Clopin (*The Hunchback of Notre Dame*), and Velma (*Chicago*). Kaitlyn would like to thank her family and friends for their unwavering support and love. She dedicates this to her little sister, her built-in best friend!

### TYLER JIMENEZ (*Count Leopold/ Ensemble/ U/S Vlad*)



(he/him) is delighted to be making his Geva Theatre debut! Tyler was last seen in the National Tour of *Frozen*, where he was a part of the original touring cast as Pabbie. Previous credits include the National Tour of *Joseph...Dreamcoat*. He has also been seen regionally at Alabama Shakespeare Festival, The Arrow Rock Lyceum Theater, Syracuse Stage, and more. He has appeared on national television, having performed in the opening of the 73rd annual Tony Awards. Additionally, Tyler just wrote and performed an original one man show called *The Dixon Family Reunion* with more performances coming this summer. BFA Musical Theater Syracuse University. ILYMT. IG: @Tylerbo10

### JEFFREY KRINGER (*Dmitry/ Ensemble*)



(he/him) A Geva Theatre debut, Jeffrey is very happy to be onstage near his home town of Skaneateles, New York! In his career, he's taken on quintessential roles like Tony in *West Side Story* at

# WHO'S WHO

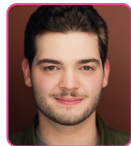
Lyric Opera of Chicago (debuted cover), Billy Bigelow in *Carousel*, Arthur in *Camelot*, Prince Christopher in *Cinderella*, Frederick in *Pirates of Penzance*. Other ventures include: *Cruel Intentions* (National Tour), *Maggie* (Goodspeed), *About Love* (Off-Broadway), *Loch Lomond*, and *In the Light*, (Open Jar Studios NYC), *Titanic* (Milwaukee Repertory Theater), *Catch Me If You Can* (New London Barn Playhouse). Jeffrey is a proud graduate of SUNY Fredonia. @jeffreyingranger

## JEREMY LAVARELLO (*Ensemble/ U/S*



**Count Leopold**) (he/him) is joyous to be a part of this production! He is a proud first generation American of Peruvian parents and will soon be a junior at SUNY Fredonia. Yes, #FREDWORKS!!! He still has the lyrics "Dancing Bears, painted wings" stuck in his head from the dance call. He would like to thank his mother, father, and friends for always believing in him. If you think he's pretty awesome, feel free to reach out to him on all socials @jeremy\_lavarello #ProfessionalDebut

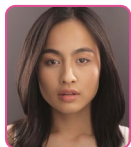
## MARK RYAN LEAVITT (*Ensemble/ U/S Gleb*)



(he/they) is a recent Nazareth University BFA Musical Theatre graduate with a Minor in Technical Theatre and Design. Previous Credits: Swing, u/s Barry (*The Prom*), Jerome, u/s Frank (*Merrily We Roll Along*),

Aaron Schultz, u/s Warner (*Legally Blonde*). Originally from Florida, Mark is excited to be making his professional debut at Geva! He would like to thank his friends and family for the constant love and support and hopes you enjoy the show. @mark.\_leavitt

## QUYNH-MY LUU (*Anya*) is euphoric to be



back at Geva! GEVA THEATRE: *Sister Act* (Sister Mary Robert), *A Christmas Carol* (Belle/ Fred's Wife/Martha). NYC: NYGASP: *The Mikado* (Yum-Yum). REGIONAL: Kennedy Center: *Rent in Concert* (Alexi

Darling); Arvada Center: *Into the Woods* (Cinderella); Virginia Repertory Theatre: *Cinderella* (Ella); Ford's Theatre: *Into the Woods* (Rapunzel); Signature Theatre: *Soft Power* (Waiter & Others), *Pacific Overtures* (Tamate & Others), *A Little Night Music* (Mrs.

Nordstrom), *Daphne's Dive* (Jenn); Olney Theatre Center: *Matilda* (Acrobat), *Sweeney Todd*, *Beauty and the Beast*; Fulton Theatre: *The Hunchback of Notre Dame*; Interlakes Summer Theatre: *Miss Saigon* (Kim). EDUCATION: BA in Musical Theatre from JMU. quynhmyluu.com. IG: @quynhmyluu

## ADAM RENNIE (*Gleb/ Ensemble*) (he/they)



is an international actor and singer, originally from Sydney, Australia, and now based in New York City. A graduate of the Western Australian Academy of Performing Arts (WAAPA),

Adam has performed in major musical theatre productions across Australia, Asia, and North America. Credits include the New York Times Critic's Pick *Who's Your Baghdaddy* (Curveball Creative); Dr. Frank-N-Furter in *The Rocky Horror Show* (GFO); *Love Never Dies* (RUC); *The Producers* (The Production Company); Will Bloom in *Big Fish* (RPG); Hedwig in the New Zealand premiere of *Hedwig and the Angry Inch* (The Court); Nick Hurley in *Flashdance* (NETworks); *Come From Away* (Milwaukee Rep); *Priscilla, Queen of the Desert* (Ogunquit Playhouse); and *Dirty Rotten Scoundrels* (Arts Center of Coastal Carolina). @adamjrennie

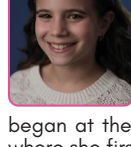
## BIANCA GABRIELLE RIVERA-IRONS



(*Ensemble/ U/S Lily*) (she/her) National Tours: *Pretty Woman*, *Mrs. Doubtfire* (Janet). Select theatre: *West Side Story* (Anita), *25th Annual... Spelling Bee* (Logainne), *Native Gardens* (Tania). Con

amor para Mom, Dad, Bagel y Oliver.

## MIKA SPINDEL (*Young Anastasia/ Alexei/ Ensemble at Certain Performances*) (she/her) Mika

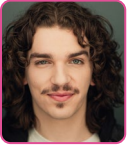


is a 5th grader in Brighton, where she balances her academics with a strong passion for the performing arts. Her love for theater

began at the Brighton Summer Art Program, where she first discovered the joy of being on stage. Since then, Mika has performed in a variety of productions, showcasing both her versatility and enthusiasm. Her credits include *Shrek* (Young Fiona) with Webster Theatre Guild, *Seussical the Musical* (Young Kangaroo) with Pittsford Musicals, and leading roles

such as Edwina in *Dear Edwina*. She has also appeared as Sebastian in *The Little Mermaid Jr.*, Molly in *Annie Jr.*, and Genie in *Aladdin Jr.* In addition to theater, Mika studies piano, voice, and acting, and is also a dedicated competitive cheerleader. This winter, she performed at Geva Theatre in *A Christmas Carol* as Turkey Boy. Mika is thrilled to return to the Geva stage and is especially excited to take on the role of Young Anastasia.

**SHANE PATRICK TAYLOR (Ensemble/**



**Swing/ U/S Dmitry)** (he/him)

Geva debut! Shane recently graduated from Nazareth University, where he was part of their BFA musical theatre program. Last year he spent the summer at Cortland

Repertory Theatre in their productions of *The Wedding Singer* (George), *The Little Mermaid* (Ens, U/S Louis), and *Hello, Dolly!* (Ensemble). Other credits include *Cabaret* (Emcee), *The Trail to Oregon!* (Father), *Legally Blonde* (Emmett), and *Merrily We Roll Along* (Ru). Shane also works as a music director and arranger, most recently with *The Hills of Tomorrow*, a new Sondheim revue created and developed with frequent collaborator Kevin Torello. Much thanks to his friends and family! @shaanetaaylor

**TIFFANY TOPOL (Lily/ Ensemble)** (she/



her) Geva debut! Recent

theatre credits include *Cats* (Bombalurina) and *Beautiful: The Carole King Musical* (Carole King) at Paramount Theatre, *Once* (Girl) at Kansas City Rep, and *It's a Wonderful*

*Life* (Mary) at Shakespeare Theatre of New Jersey. Past credits: *Once*, *Xanadu* (1st National Tours), *Once* (Paramount Theatre, Jeff Award Nomination), *Cabaret* (Barrington Stage Company), *My Way: A Musical Tribute to Frank Sinatra*, *Guys and Dolls* (Milwaukee Repertory Theatre), *Sweet Charity* (Writers' Theatre). TV/Film: Leo (Netflix), *Jimmy Kimmel Live!*, *Let's Be Real* (Fox). @tifftopol

**BRIAN VAUGHN (Vlad/ Ensemble)** (he/him)

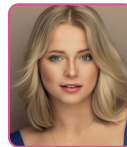


Geva Theatre Debut! National

Tours: *Parade* (Tony Award Best Revival), *Beetlejuice*. Regional: George in *Who's Afraid of Virginia Woolf*, Alan in *God of Carnage*, Georg in

*She Loves Me* at South Coast Rep; Otis/u/s JJ Hunsecker (Raul Esparza) in *Sweet Smell of Success* with Master Voices Jazz at Lincoln Center; Claudius in *Hamlet* at Denver Center; Milwaukee Rep-Resident Company (*Amadeus*, *Doubt*, *Proof*, *Voysey Inheritance*, *The Leenane Trilogy*, *Pride and Prejudice*); Utah Shakespeare Festival-multiple seasons (*Hamlet*, *Henry V*, *Cyrano de Bergerac*, Iago in *Othello*, Harold Hill in *The Music Man*, Javert in *Les Misérables*, Baker in *Into the Woods*); Arizona Theatre Company; Chicago Shakespeare Theatre; Northlight Theatre; Skylight Music Theatre; PCPA; and others. brianvaughnofficial.com IG: @brianvaughn11

**ALLY WOLFE (Ensemble)** (she/they) is thrilled



to be making her Geva debut in *Anastasia!* They are originally from Philadelphia, PA, and recently graduated from Nazareth University, receiving their BFA in Musical Theatre with a Dance minor. Favorite

performance credits include: REGIONAL: *The Wedding Singer* (Holly), *Beauty and the Beast* (Silly Girl/u/s Babette), *My Fair Lady* (Ens./ DC) NAZ: *Romeo & Juliet* (Nurse), *Crazy for You* (Patsy/DC), *Head Over Heels* (Asst. to the Choreo./OnStage Swing), *Cabaret* (Texas), *The Prom* (Ensemble), *Midsummer* (Cobweb/u/s Helena). They would like to thank their friends, family, mentors, and team for their continued support! Ally is newly represented by Resolute Artists Agency, allywolfe.net/ @ally.wolfe\_

## CREATIVE & ARTISTIC TEAM

**TERRENCE MCNALLY (Book)** was an

American playwright, librettist and LGBTQ+ trailblazer, described by the New York Times as "the bard of the American Theater." One of the few playwrights of his generation to successfully pass from the avant-garde to mainstream acclaim, Terrence redefined American playwrighting for six decades and was the recipient of five Tony Awards (two for his plays *Love! Valour! Compassion!* and *Master Class*, two for the books to his musicals *Kiss of the Spider Woman* and *Ragtime*, and the 2019 Tony Award for Lifetime Achievement). Terrence received many honors throughout his life, including the Dramatists Guild Lifetime

## WHO'S WHO

Achievement Award (where he was Vice President from 1981 to 2001), the Lucille Lortel Lifetime Achievement Award, and inductions into the American Theater Hall of Fame in 1996 and the American Academy of Arts and Letters in 2018. His incredible legacy lives on in his plays, musicals and operas that continue to be performed all over the world, as well as in his papers, which are kept and open to the public at the Harry Ransom Center in the University of Texas at Austin.

**LYNN AHRENS (Lyrics)** and **STEPHEN FLAHERTY (Music)** have been collaborators since 1983, creating an array of notable Broadway and off-Broadway musicals, including *Ragtime*, *Once On This Island*, *Seussical*, *Rocky*, *My Favorite Year*, *A Man of No Importance* and the animated feature film *Anastasia*. In 2017, they brought *Anastasia* to Broadway, making it their third musical collaboration with Terrence McNally. They've won the Tony Award, Drama Desk, Outer Critics Circle and the Olivier, and have been nominated for two Academy Awards, two Golden Globes and four Grammys. They serve on the Council for the Dramatists Guild of America and co-founded the DGF Fellows Program for Emerging Writers, which has nurtured new generations of playwrights and musical theatre writers since 2000. In 2014 they received the Oscar Hammerstein Award for Lifetime Achievement, and in 2015 they were inducted into the Theater Hall of Fame.

**ELIZABETH WILLIAMSON (Director, Artistic Director)** (she/her) joined Geva as Artistic Director in 2022, to launch the theatre's 50th Anniversary Season. An Obie Award-winning director, Williamson is known internationally for



her work as a dramaturg, director, adapter, and producer. Broadway: *Matthew López' The Inheritance* (Tony, Olivier, Critics Circle, Evening Standard, GLAAD, and Drama Desk Awards for Best Play, Outer Critics Circle Honoree), *A Gentleman's Guide to Love and Murder* (Tony Award for Best Musical), *Anastasia*. West End: *The Inheritance*. Off-Broadway: Sarah Gancher's *Russian Troll Farm*, Dan O'Brien's *The Body of an American*. Regional: About Face Theatre, ACT, the Alley, Cal Shakes, Court, Hartford Stage, the La Jolla Playhouse, Oregon Shakespeare Festival, Pioneer Theatre, Steppenwolf,

Theatre de La Jeune Lune, TheaterWorks Hartford, TheatreSquared, the Westport Country Playhouse, Williamstown Theatre Festival. Williamson previously served as Associate Artistic Director and Literary Manager at Pioneer Theatre Company in Salt Lake City and as Associate Artistic Director and Director of New Play Development at Hartford Stage. She received a 2007 NEA Fellowship in Literary Translation and is a member of SDC and LMDA. Education: M.St., Oxford University; B.A., Bennington College; trained at the École Internationale de Théâtre Jacques Lecoq.

**DON KOT (Music Director/Piano/Conductor)** (he/him) celebrates his 25th season at Geva Theatre where he has music-directed 61 musicals and plays including many new works! Don has performed Off-Broadway at the Alice Griffin Jewel Box Theatre at Pershing Square Signature Center, Playwrights Horizons, 45 Bleeker Street Theatre, and worked regionally at the Alliance Theatre, Portland Center Stage, Cape Playhouse, Lyric Opera Cleveland, Cleveland Playhouse, and locally at Blackfriars Theatre, JCC CenterStage, Downstairs Cabaret Theatre, Off-Monroe Players, among others. National touring productions include *Fosse*, *Footloose*, *Fiddler on the Roof*, *The King and I*, *Mamma Mia!*, and *Hairspray*. Don is the Coordinator of the Musical Theatre degree programs at the State University of New York at Geneseo.

**KELLI FOSTER WARDER (Choreographer)** (she/her) currently serves as the Executive Artistic Director of Artistry, a theater and visual arts nonprofit in Minnesota. Her work as a director and choreographer has been seen on stages across the country including The Ordway, Children's Theater Company, Theater Latté Da, Signature Theater, The 5th Avenue Theater and Asolo Rep. What a dream to be working with this fabulous team at Geva.

**NICK VAUGHAN (Scenic Design)** (he/him) is a Houston-based interdisciplinary artist who generally collaborates with his husband Jake Margolin. Solo exhibitions include: McClain Gallery, Blaffer Art Museum, DiverseWorks, OSUMA, The Invisible Dog, Art League Houston, Aurora Picture Show, Devin Borden Gallery and non-traditional community-facing venues. Theater: Off-Broadway: *The Royale*; *Roosevelvis*; *Mission Drift*; *Architecting*. Regional: Geva:

*Newtown; Jane Eyre; The Alley; And Then There Were None; Hartford Stage: Jane Eyre; Henry V; Seder; Cloud 9.* Opera: National Opera of China; Opera Company of Philadelphia; Castleton Festival. Dance [with Jake Margolin] *Flesh Chariots* (upcoming Cullberg Ballet); *Weathering; Calving; Thank You For Coming: Space; Thank You For Coming: Play; Thank You For Coming: Attendance.*

**VALÉRIE THÉRÈSE BART (Costume Design)** (she/her) Regional: *MRS CHRISTIE* (Cincinnati Playhouse/Milwaukee Rep); *JANE EYRE; VIETGONE* (Alley Theater); *INTO THE WOODS; DIAL M FOR MURDER* (Guthrie); *IT'S CHRISTMAS, CAROL!*\* (Oregon Shakespeare Festival); *THE GREAT LEAP*\* (Denver Center/Seattle Rep); *POP!*\* (scenic, Yale Repertory) Off-Bway: *POOR YELLA REDNECKS*\* (Manhattan Theatre Club/South Coast Rep); *WIVES*\* (Playwrights Horizons); *LITTLE WOMEN* (Primary Stages, NYC premiere); *VANITY FAIR*\* (Pearl Theatre) Opera: *THE BIG SWIM*\* (Houston Grand Opera/Asia Society of Texas); *A THOUSAND ACRES*\* (Des Moines Metro Opera); *FIDELIO* (Heartbeat Opera); *RIGOLETTO* (Minnesota Opera); *LISTEN, WILHELMINA!*\* (costume/scenic, Wolf Trap Opera); *SHE, AFTER*\* (costume/scenic, Urban Arias) Other: *FOR YOU, PAIGE*\* (TikTok musical) [valeriebart.com](http://valeriebart.com) \*world premiere.

**BENTLEY HEYDT (Lighting Design)** (he/him) is a NYC based, limb different Korean American lighting designer. Bentley is thrilled to be returning to Geva for a third consecutive season! Geva Theatre: *Always...Patsy Cline, The Color Purple*. Select Designs: *It's A Wonderful Life...Radio Play* (Milwaukee Rep); *A Christmas Carol* (Indiana Rep); *The Color Purple* (KC Rep & Theatre Latte Da); *Monarcas and Dia de Muertos* (Calpulli Mexican Dance); *Kafkaesque!* (Staro Industries); *Year of The Snake* (Nai-Ni Chen Dance); *you don't have to do anything* (HERE Arts); *Rock of Ages* (Music Theatre Wichita); *(no)man* (IMGE Dance); *Yerma* (Vibrancy Theatre); *Cubic and Quartet* (Born Dancing); Anthony Ramos Album Release (Rough Trade). Broadway: *How To Dance In Ohio* (ALD); *Life of Pi* (DMC) (2023 Tony Award). [www.bentleyheydt.com](http://www.bentleyheydt.com)

**ERICA LAUREN MAHOLMES (Assistant Lighting Design)** (she/her) is a storyteller, lighting designer, associate, and assistant for live theatre and dance. Her designs have been seen at Trinity Rep, Portland

Center Stage, Penobscot Theatre Co, Idaho Shakespeare Festival, Cape Fear Regional Theatre, KC Rep, Alley Theatre, Winnepesaukee Playhouse, and more. She has worked on Broadway as Associate Lighting Designer on *The Rocky Horror Show; Mary Jane, Little Bear Ridge Road* and Assistant Lighting Designer on *Just In Time, The Notebook, The Notebook 1ST NATIONAL TOUR*. Her education includes: Stagecraft Institute of Las Vegas, West Chester University (BA), and Illinois State University (MFA). She is a proud member of Black Theatre Network, Design Action, and Local USA 829. [ericalaurenmaholmes.com](http://ericalaurenmaholmes.com). Insta: [@ericalaurenmaholmes](https://www.instagram.com/ericalaurenmaholmes)

**ANDREW MARK WILHELM (Sound Design)** (he/him) is the current Sound Department Supervisor for Geva Theatre, as well as a Sound Designer. He most recently was the Sound Designer for *Always...Patsy Cline and Dial M for Murder*. Previous Geva credits include Sound Designer for *Cinderella, Somewhere, Airmess, Ring of Fire, Once the Musical, and Revival: The Resurrection of Son House*, and others; and Video Engineer for *The Real James Bond...Was Dominican*. He spent most of pandemic working on digital audio and video content for Geva, including the Recognition Radio festival, and *Where Did We Sit on the Bus?* Hailing originally from the Detroit area, with a BFA in Theatre Technology & Design from Oakland University, Andrew is fortunate to have worked in theatres from Florida to California, before settling here in Rochester at Geva.

**SARAH NORTON (Wig, Hair, & Makeup Design)** (she/her) is a New York City-based wig artist specializing in design and construction. Recent credits include *Hello, Dolly!, White Christmas, and Fiddler on the Roof* (Music Circus), *Grease* (Bucks County Playhouse), and *My Fair Lady* (American Theatre Group). She has contributed to more than a dozen Broadway productions as a wig builder, supervisor, and associate designer, and is a wig artisan for Saturday Night Live. Prior to relocating to New York, she served as assistant hair and makeup designer for The Dallas Opera and Opera Tampa. Instagram: [@sarahnortonwigs](https://www.instagram.com/sarahnortonwigs)

**CALLERI JENSEN DAVIS (Casting)** is the collaborative casting partnership of James Calleri, Erica Jensen, and Paul Davis. Broadway credits include Tony-winning *Purpose, Topdog/Underdog, The Piano*

## WHO'S WHO

*Lesson, For Colored Girls...*, *Thoughts of a Colored Man*, *Burn This, Fool for Love*, *Venus in Fur*, *Hedwig & The Angry Inch*, *The Elephant Man*, *Of Mice and Men*, *33 Variations*, *A Raisin in the Sun*, *Chicago*, *The Dead*. Select TV credits include: *Love Life*, *Dickinson*, *The Path*, *Lipstick Jungle*. [callerijensendavis.com](http://callerijensendavis.com)

**KEVIN GREGORY DWYER** (*Production Stage Manager*) (he/him) 3rd Season as Resident Stage Manager! Previous Geva favorites: *Barefoot in the Park*, *The Play That Goes Wrong*, *Always...Patsy Cline*, *Beautiful: The Carole King Musical*, *Pure Native*, *August Wilson's How I Learned What I Learned*, *Lady Day at Emerson's Bar and Grill*, and *FRIDA...A Self Portrait*. Regional highlights: *Bandstand*, *Jersey Boys*, *A Chorus Line*, *EVITA* (The REV Theatre Co). National Tours: *The Book of Mormon*. Chicago: *An American in Paris*, *Disney and Cameron Macintosh's Mary Poppins*, *The Color Purple*, *Mamma Mia!*, *Disney's Beauty and the Beast*, and *Little Shop of Horrors* (Drury Lane Theatre); *Macbeth*, *Q Brothers Christmas Carol*, *King Charles III*, and *Othello* (Chicago Shakespeare Theater); *This Is Our Youth* and *Lord of the Flies* (Steppenwolf Theatre Company). Proud AEA Member and Emerson College Alum.

**SHANNON TOOT** (*Assistant Stage Manager*) (she/her) is thrilled to be on this journey to the past! Geva SM credits: *A Christmas Carol*, *Airness*, *Barefoot in the Park*, *Little Women*, *The Wizard of Oz*, *Yoga Play*, *Young Frankenstein*. Other SM credits include *Sanctuary City* (Geva co-production with The Kitchen Theatre), *Ragtime: The Musical* (Hangar Theatre), *Spring Awakening* and *The Seagull* (The Company Theatre). Favorite acting credits include *A Christmas Carol* (Ensemble) at Geva; *Avenue Q* (Kate Monster), *Urinetown* (Hope Cladwell), and *Almost, Maine* at SUNY Brockport. Proud member of AEA. Much love to my family!

**JOSH LAU** (*Assistant Stage Manager*) (he/him) is a queer Chinese American from Honolulu, HI, and returns to Geva after previously working on *Jane Eyre*, *Sex with Strangers*, and *A Christmas Carol*. He's the PSM for Eastman School of Music's operas including *Into the Woods* and *The Light in the Piazza* with Adam Guettel. Highlights include working with Bristol Valley Theatre (*Cowboy Versus Samurai*, director and SM/ASM for many others), Ohio Light Opera (*Annie Get Your Gun*, *Kiss*

*Me, Kate*), Finger Lakes Opera (*La Bohème*), Meadow Brook Theatre in MI, Pegasus Early Music, and Hawaii Shakespeare Festival. B.A. in Theatre from Nazareth University.

## ORCHESTRA

**BRIAN DONAT** (*Cello*) (he/him) is a full-time freelancer in Rochester and is thrilled to be making his Geva debut! A graduate of Houghton College and an alum of the Meadowmount School, he lived in the Adirondacks for a decade before moving to Rochester in 2017. He teaches a large private studio and is on the faculty at Hobart William Smith College and St. Peter's Community Arts Academy, both in Geneva NY. He has played in Italy and Australia, concert halls all across New York, and several less traditional venues: two mountaintops, three islands, two castles, countless fields and one Home Depot. When he's not playing cello, Brian can usually be found playing outside, hiking, running, cross-country skiing, or biking. He lives in Webster with his wife, Jolene, and their dog, Crindy, who has yet to develop an interest in the cello.

**JOSEPH P. JANOVER** (*Keyboard II*) (he/him) is a music educator in Greece CSD and adjunct professor of music and theatre at University of Rochester. He is a theatre music director, and multi-instrumentalist state-wide with over 220 theatrical credits, including Off-Broadway. In addition to performing, he is an avid arranger, orchestrator and composer in varying styles and mediums, including film, media, and commissions for school festivals. In addition to Bachelor's and Master's degrees in Music Education K-12 from the Crane School of Music, he is currently a doctoral candidate working towards a DME degree in Music Education, with a focus on curriculum development. He sends love to his family and ever-supportive wife, Katya. He is pleased to be making his Geva debut with *Anastasia!*

**JOSH KERR** (*Bass*) (he/him) Josh has been a regular member of the pit orchestra at Geva starting with the 2008 production of *Cabaret* and most recently the 2025 production of *Always...Patsy Cline*. Josh has been performing with The Syracuse Orchestra since 2014 and has previously held positions as principal bass of Binghamton Philharmonic Orchestra and Cayuga Chamber Orchestra.

**MARGARET LEENHOUTS** (*Violin*) (she/her) is currently on the faculty of Nazareth College and is a member of the Rochester Philharmonic Orchestra. In addition, she enjoys an eclectic musical career in Rochester NY performing with the Geva Theater, the Rochester Broadway Theater League, the Finger Lakes Opera, the Rochester Oratorio Society, and the Society for New Music. She has appeared nationally at the British Arts Center of Yale, the Eastern Festival of Music, and has given benefit concerts for the Sedona Chamber Music Society and the Flagstaff Symphony Orchestra in her native Arizona. In addition to her solo and chamber music work, Dr. Leenhouts has been a member of the Rochester Philharmonic, the Honolulu Symphony, and the Grand Rapids Symphony.

**AARON STAEBELL** (*Drums/Percussion*) (he/him) is an educator, performer, composer, and Assistant Professor of Jazz at Ithaca College, as well as Visiting Lecturer of Drumset at Cornell University. A graduate of the Eastman School of Music, he spent 15 years teaching public school music before moving into higher education. He also works with schools with his consulting firm Sounds of the True North and previously served as Manager of Educational Resources for Hal Leonard. Aaron has performed for many Geva shows, including *In the Heights*, *Beautiful*, and *Hair*.

also serving on the Board of the Theatre Alliance of Greater Philadelphia as Chair of the Barrymore Awards Oversight Committee. He subsequently moved into the Executive Director position of the Theatre Alliance before joining the Wilma. As a theater artist, James acted in many productions before turning to theater administration and is most proud of his directorial and dramaturgical work on the plays of his husband Michael Whistler. James holds an MFA from the University of Washington and a BA from The College of Wooster in Ohio, where he previously served on the alumni board. Following the pandemic shutdown, James joined committees of the Minnesota Arts and Culture Coalition and the Professional Non-profit Theatre Coalition to help build support and funding for arts and culture. In Philadelphia, he served on the Cultural Advisory Committee under former Mayor Michael Nutter, who officiated his wedding ceremony. James is a member of the City of Rochester's Arts and Creative Community Committee (AC<sup>3</sup>) and serves on the Board of the Rochester Downtown Development Corporation.

## STAFF LEADERSHIP

**JAMES HASKINS** (*Executive Director*) (he/him)



is honored to serve as Geva Theatre's Executive Director alongside Artistic Director Elizabeth Williamson, and Geva's Board and staff. Prior to coming to Geva, James served as Managing

Director of the Guthrie Theater in Minneapolis after having completed a twelve-year tenure as Managing Director of The Wilma Theater in Philadelphia in partnership with Artistic Director Blanka Zizka. James began his work in theater administration at Circle Repertory Company and went on to work with a variety of theaters in New York and Seattle, most notably the Seattle Group Theatre. Upon moving to Philadelphia, he first worked as Managing Director of InterAct Theatre Company, while

**ACTING**



**DESIGN/TECH**



**GEVA THEATRE**

PROFESSIONAL INTERNSHIPS



**THEATRE BROCKPORT**

INTENSIVE THEATRE EXPERIENCE  
IN A LIBERAL ARTS ENVIRONMENT



Department of

**Theatre & Music Studies**

**SUNY BROCKPORT**



**THEATRE BROCKPORT**

CONTACT: (585) 395-2476 | [theatre@brockport.edu](mailto:theatre@brockport.edu)

**EASTMAN COMMUNITY MUSIC SCHOOL**

**Start your music  
adventure with ECMS!**

Voice and instrumental  
lessons, ensembles,  
and classes for all ages  
and abilities.



**University  
of Rochester**

Eastman School of Music

Eastman Community Music School



[esm.rochester.edu/community](http://esm.rochester.edu/community)  
(585) 274-1400

# ABOUT GEVA THEATRE



Geva Theatre is a not-for-profit theatre company dedicated to creating and producing singular theatre productions and programs that serve the Rochester region and beyond, by illuminating the fullness of our many human experiences.

Founded in 1972 by William Selden and Cynthia Mason Selden, Geva was originally housed in the Rochester Business Institute building on South Clinton Avenue. In 1982, Geva purchased and converted its current space - formerly a NYS Arsenal designed by noted Rochester architect Andrew J Warner and built in 1868 - and opened its new home at the Richard Pine Theatre in March 1985. Geva operates two venues - the 511-seat Elaine P. Wilson Stage, and the 180-seat Ron & Donna Fielding Stage.

As one of the country's leading theatre companies and a member of the national League of Resident Theatres, Geva produces a varied contemporary repertoire from musicals to world premieres celebrating the rich tapestry of our diverse community. We draw upon the talents of some of the country's top actors, directors, designers, and writers who are shaping the American Theatre scene.

Geva's Education Department serves thousands of students annually through student matinees, in-school workshops, the acclaimed Summer Academy training program, and other programs. Geva's New Play Development Programming offers new and established writers a nurturing environment from which to take their work to the next level. Geva has presented approximately 400 play readings and workshops since its inception. Nearly 70 Geva-developed plays have had subsequent productions around the country. Geva's Literary Department produces multifaceted programs such as *Geva Insights* that deepen the appreciation of the work on our stages, provide opportunities for regional dialogues, and help fulfill Geva's anti-racism commitments through collaborative programming.

An active member of the Rochester community, Geva offers a multitude of opportunities for our audience and community members to engage with live theatre and the country's best artists. Since the breadth of Geva's programming cannot be sustained on ticket sales alone, this contribution to the region's cultural, social and economic vitality is recognized by grants and charitable contributions from federal, state and local government agencies, national and local foundations, and businesses and individuals from throughout the region.

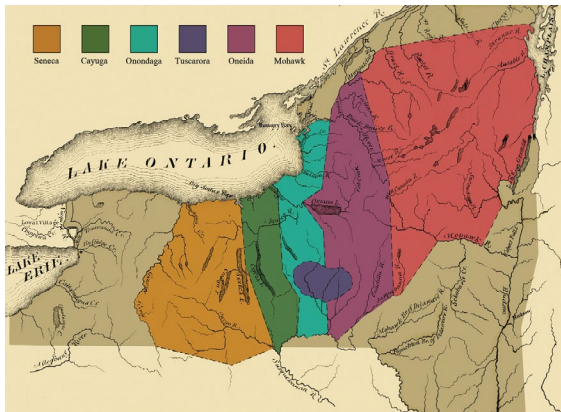
For more information: [GevaTheatre.org](http://GevaTheatre.org).

# ACKNOWLEDGING THE LAND

A land acknowledgement creates a more accurate picture of the history of the lands and waterways we call home and pays respect to the Indigenous People who have stewarded them from time immemorial. At Geva, we offer this statement as part of our anti-racist values and to help us all unlearn and relearn the history that has brought us here to the land we call the United States. With this understanding, we can envision a new path forward, led by the principles of equity and justice.

American society as it exists today owes its identity and vitality to generations from around the world who contributed their hopes, dreams and resources to making the history that led to this moment. Some were stolen and enslaved here against their will, some were drawn to leave their distant homes in search of a better life, and some have stewarded this land for more generations than can be counted. Acknowledging the hardships and atrocities that many peoples have suffered on American soil is critical to building mutual respect and connection across all barriers of heritage and difference. By honoring this truth, we begin this effort to acknowledge what has been purposefully buried.

There are 567 federally recognized Indian Nations (variously called tribes, nations, bands, pueblos, communities and Native villages) in the United States. Additionally, there are tribes located throughout the United States who are recognized by their respective state governments.



Graphic by Eric E. Doxtator

## Geva's Acknowledgment

We are gathered in the ancestral and unceded territory of the Onöndowa'ga, or "the people of the Great Hill." In English, they are known as Seneca people, "the keeper of the western door." Together, with the Mohawk, Cayuga, Onondaga, Oneida, and Tuscarora, the Seneca make up the sovereign Haudenosaunee Confederacy. We pay respects to their elders, past and present. Please take a moment to consider the many legacies of violence, displacement, genocide and migration that bring us together here today. And please join us in uncovering such truths at any and all public events.

To learn more about the Native people in our region and the Canandaigua Treaty of 1794, visit [ganondagan.org](http://ganondagan.org).

# MISSION, VISION, AND VALUES

## Our Mission

To create and produce singular theatre productions and programs that serve the Rochester region and beyond, by illuminating the fullness of our many human experiences.

## Vision

To work in collaboration with the most exhilarating creatives and organizations in the field – locally, nationally and internationally. To produce and present vital live theatre and multi-disciplinary experiences, and essential education and engagement programs, involving a diverse array of perspectives, for and with the communities that comprise the greater Rochester, NY region.

## Values

Geva values artistic courage, sustainability, excellence, boundless hospitality, empathy, and anti-racism and inclusion.

### Artistic Courage

We foster a culture that invites us to dream up new worlds.

We challenge ourselves and our audiences to embrace theatre-making that makes the seemingly impossible possible.

### Sustainability

The decisions we make in the present are decisions that ensure our future.

We care for our organization, our resources – human, financial, and natural – and our communities in a way that will sustain Geva for future generations.

### Excellence

We hold ourselves and each other to the highest standards. We approach our work as lifelong students: always striving to learn, evolving our craft, and deepening our practice.

### Anti-Racism & Inclusion

We strive to overcome systemic inequities through active inclusivity, equity, accountability, anti-discrimination and anti-racism practices as defined by Geva.

### Boundless Hospitality

All are welcome at Geva regardless of ability, where they come from, or how they identify. We endeavor to make our productions, programs, and space accessible and inclusive to cultivate a true sense of belonging.

### Empathy & Transparency

An organization is best when all individuals are at their best. We center empathy, compassion, and transparency in our practices, ensuring that our artists and staff thrive in a workplace environment of mutual respect, trust and kindness.



Join us at Geva's Bar  
and café, featuring  
**The Kitchen!**



**VIEW THE FULL MENU!**

*The bar and café are always open at  
least 2 hours ahead of performances.  
Visit [GevaTheatre.org](http://GevaTheatre.org) for full details.*



Harter Secret & Emery LLP  
ATTORNEYS AND COUNSELORS

Proudly  
supporting  
the arts.



HSE  
Harter Secret & Emery LLP  
ATTORNEYS AND COUNSELORS

585.232.6500

[hselaw.com](http://hselaw.com)

[hselaw.com](http://hselaw.com)

# RESIDENT STAFF & ARTISTS

ELIZABETH WILLIAMSON (she/her)  
*Artistic Director*

JAMES HASKINS (he/him)  
*Executive Director*

## STAFF LEADERSHIP

JOSEPH BIAGINI (he/him)  
*Production Manager*

FRANK DEL VECCHIO (he/him)  
*Controller*

JASMINE B. GUNTER (she/her)  
*Resident Director/  
Associate Producer*

SARAH HALEY (she/her)  
*Director of Marketing*

GITANA MIROCHNIK (she/her)  
*The Elayne Cassidy Nicholas  
Director of Development\**

JEFFREY L PAGE (he/him)  
*2025/2027 Artist in Residence*

JACQUELINE RAYMOND  
WEGMAN (she/her)  
*Director of Connectivity*

THALIA SCHRAMM (she/her)  
*Managing Producer*

DELANNA STUDJ (she/her)  
*2024/2026 Artist in Residence*

## ARTISTIC & MANAGEMENT

JILLIAN SAJDA (she/her)  
*Company Manager*

HAZEL PENROSE (she/her)  
*Production & Company  
Management Assistant*

NICOLE STEIN (she/her)  
*Executive Assistant*

## AUDIENCE SERVICES

JOHN HAMOLSKY (he/him)  
*Senior Manager of Guest Services*

TIM INTILI (he/him)  
*Director of Ticketing*

CASSIE WEAVER (she/her)  
*Box Office Supervisor*

NICOLETTE VENTIMIGLIA (she/her)  
*Bar Manager*

CARLEA GRANT (they/them)  
*Assistant Guest Services Manager*

JACE JACOBS (he/him)  
*Assistant Front of House Manager*

NANETTE FALCHI (she/her)  
*Giftshop Services*

ALEX BERARDI (he/him)  
SAM KAPLAN (they/them)

HANNAH MORENO (she/her)  
ANGEL RODRIGUEZ (they/them)  
MARLI WORDEN (she/her)  
*Box Office Associates*

SUE BELLINGER (she/her)  
CARLY CRESSMAN (she/they)  
MARK DI NITTO (he/him)  
MARY DUGAN (she/her)  
KEVIN SENE (he/him)  
*House Managers*

MICHAEL FAMBRO (she/her)  
AUBREY REYNOLDS (she/her)  
J. IAN REYNOLDS (he/him)  
MARY REYNOLDS (she/her)  
BELLE RIVERA (she/her)  
BRIAR ROSE (she/her)  
*Bartenders*

## CONNECTIVITY

KATE MORRIS (she/her)  
*Connectivity Assistant*

OLIVIA SPENARD  
*Education Consultant*

NATHANIEL NIEMI  
*Manager of Summer  
Academy 2026*

JEAN GORDON RYON  
KADAJAH SCOTT  
*Teaching Artists*

## COSTUMES

JENNIFER BAYANG (she/her)  
*Costume Shop Supervisor*

PAIGE WALDRON (she/her)  
*Wardrobe Supervisor*

REBEKAH CLOW (she/her)  
*First Hand*

MICHAELA LINCOLN (she/her)  
*Cutter/Draper*

BRI MATSON (she/her)  
*Stitcher*

## DEVELOPMENT

SEAN BRITTON-MILLIGAN (he/they)  
*Event Manager*

JUDITH LEMONCELLI (she/her)  
*Grants Manager*

SARAH MAYFIELD (she/her)  
*Development Coordinator*

## FINANCE & OPERATIONS

ANNA BECK (she/her)  
*Finance Assistant*

CLIFF LAMPLEY (he/him)  
*Facilities Manager*

LAMONT TITUS (he/him)  
*Environmental Services*

LAURIE MASOOD (she/her)  
*Finance Volunteer*

## LIGHTING

DEREK A. MADONIA (he/him)  
*Lighting Supervisor*

CHRIS NIMICK (he/him)  
*Electrician/Light Board Programmer*

ANDREW LA FAVOR (he/him)  
*Electrician*

ESTHER WILKINS (she/her)  
*Electrician*

## MARKETING

ANDY GERMUGA (he/him)  
*Sales Manager*

AMANDA RIEKSTINS (she/her)  
*Graphic Designer*

KYLE OSENBACH (he/they)  
*Marketing Assistant*

JUNE KINSELLA (she/her)  
*Media Buyer/Frontline Advertising*

## PRODUCTION

IAN AVERY (he/him)  
*Stage Operations Supervisor*

KEVIN GREGORY DWYER (he/him)  
*Resident Stage Manager*

NATE KELLY-DUMONT (he/they)  
*Crew Swing*

## PROPERTIES

THERESA GRANGER (she/her)  
*Properties Supervisor*

RILEY BATES (she/her)  
*Properties Artisan*

## SCENIC ARTISTRY

ALEX STOEHR (he/him)  
*Scenic Charge Artist*

EDDIE WARRICK (they/them)  
*Scenic Artist*

## SCENERY CONSTRUCTION

DAVID CROUSE (he/him)  
*Technical Director*

SHAWNNA COLVILLE (she/her)  
*Carpentry Supervisor*

RIVER BAUGH (they/them)  
*Carpenter*

JACK DODDS (he/him)  
*Carpenter*

## SOUND

ANDREW MARK WILHELM (he/him)  
*Sound Supervisor*

EMUJY MULLIN (they/them)  
*Audio Engineer*

KELLY PROTZ (they/them)  
*Audio Engineer*

MARK CUDDY  
*Artistic Director Emeritus*

\* This position is named in memory  
of Elayne Cassidy Nicholas, who  
embodied unconditional love.  
May the stories of this theater  
expand the boundaries of  
empathy for all of us.

# CORPORATE, FOUNDATION & GOVERNMENT PARTNERS

*Geva Theatre gratefully acknowledges the following businesses, foundations and government agencies for their generous support.  
(Donations listed are for the period 4/1/25 to 3/31/26.)*

## 2025-2026 SEASON SPONSOR

ESL Federal Credit Union

## 2025-2026 SEASON HONORARY PRODUCER

Dr. Dawn Lipson

## \$100,000+

The Shubert Foundation

## \$50,000-\$99,999

7Crest Financial Partners, Ameriprise Private Wealth Advisory Practice  
The Davenport-Hatch Foundation  
William & Sheila Konar Foundation\*  
New York State Council on the Arts\*\*  
NYS Senator Samra G. Brook  
Nixon Peabody LLP  
Vision Automotive Group

## \$25,000-\$49,999

Arts & Culture (Vitality) Fund at the Rochester Area Community Foundation  
Avangrid Foundation  
Buckingham Properties, LLC  
County of Monroe  
Daisy Marquis Jones Foundation\*  
ESL Charitable Foundation\*  
Louis S. & Molly B. Wolk Foundation\*  
Mary S. Mulligan Charitable Trust,  
Bank of America, N.A., Trustee\*\*  
WXXI

## \$10,000 - \$24,999

Timothy & Margaret Busch Foundation  
City of Rochester  
Donald F. & Maxine B. Davison Foundation\*  
Robert & Jean Freligh Memorial Fund  
Glover-Crask Charitable Trust  
Heveron & Company, CPAs, PLLC  
Lisk Morris Foundation\*  
Madeline's Catering

McCarthy's Tents & Events  
The Riedman Foundation  
Rochester Area Community Foundation  
Rubens Family Foundation\*  
Kilian J. & Caroline F. Schmitt Foundation\*  
St. John's  
Joseph & Irene Skalny Charitable Trust\*  
WHEC-TV, LLC  
Fred & Floy Willmott Foundation

## \$5,000 - \$9,999

3 City Center  
Audacy Operations, Inc.  
iHeartMedia/Clear Channel Broadcasting  
The Joseph & Anna Gartner Foundation  
Harter Secrest & Emery LLP  
Labella Associates, P.C.  
J.M. McDonald Foundation\*  
Max A. Adler Charitable Foundation  
Mission Advancement, LLC  
News 8 WROC-TV  
RG&E  
Theatre Development Fund  
- NYSCA & TDF's TAP+  
John F. Wegman Fund at The Community Foundation\*  
WDXK FM  
WUHF-TV

## \$2,500 - \$4,999

Ames Amzalak Memorial Trust\*  
Buffalo Spree Publishing, INC.  
Center for Adolescent & Young Adult Health  
John & Carol Condemi Fund at Rochester Area Community Foundation  
Cornell/Weinstein Family Foundation\*  
The Gouvernet Arts Fund at the Community Foundation  
Hildebrandt Family Artistic Enhancement Fund  
The New York State Division of

Homeland Security and Emergency Services (DHSES)  
The Guido and Ellen Palma Foundation  
Paychex Charitable Foundation  
Rockcastle Florist  
WHAM  
Elaine P. and Richard U. Wilson Foundation  
WRWM-FM

## \$1,000 - \$2,499

Actors' Equity Foundation  
Airigami  
Bond Schoeneck & King Law Firm  
Brown & Brown  
Canandaigua National Bank  
Century Liquor & Wines  
Entre Computer Services  
Get Caked Bakery\*\*\*  
GLC Business Services  
George & Helen Greer Advised Fund at the Community Foundation  
Johnson & Johnson  
The Jane Parker Foundation  
The Queenan Foundation  
Sinclair Broadcast Group  
Tito's Handmade Vodka  
True North Executive Solutions  
Wegmans Food Markets\*  
Westminster Barrington Foundation

## \$500 - \$999

EDMAC Foundation, Inc.  
JAZZ 90.1  
Johnson Controls Foundation  
Marshall Partners  
Rohrbach Brewing Co.

We have made every effort to ensure the accuracy of these donor lists. However, if you see an error or omission, please accept our apology, and kindly call the Development Office at (585) 420-2049.

*\*\* Education Supporter*

*\*\* Literary or New Works Supporter*

*\*\*\* Home for the Holidays Supporter*

## PROGRAM BOOK PRODUCED BY

**Buffalo Spree**  
Publishing, Inc.

PRESIDENT & CEO  
Sharon Levite

VICE PRESIDENT/CHIEF REVENUE OFFICER/PUBLISHER  
Barbara E. Macks

EXECUTIVE EDITOR Katie Smith

MANAGING EDITOR Donna Hoke

CREATIVE DIRECTOR Jean-Pierre Thimot

## ART & PRODUCTION

### SENIOR GRAPHIC DESIGNERS

Joshua Flanigan

Kim Miers

Nicholas Vitello

### GRAPHIC DESIGNER

Rachel Kaznica

## TO ADVERTISE

buffalospree.com or call

**716-972-2250**

# ANNUAL FUND DONORS

*Geva Theatre thanks the following individuals for their generous contributions.  
(Donations listed are for the time period 4/1/25 to 3/31/26.)*

## LEADERSHIP CIRCLE

### \$50,000+

Dr. Dawn Lipson (Honorary  
Season Producer) †

### \$25,000-\$49,999

Anonymous †  
Eileen Amy Ryan †

### \$10,000-\$24,999

Anonymous  
Patrick & Barbara Fulford †  
David & Patricia Gardner †  
Jane Hasselkus & Richard Edic  
Robert and Jean Freleigh  
Memorial Fund  
Dr. Tomás C. Hernández\*  
& Dr. Keith S. Reas  
Joe & Dale Klein  
Harold & Christine Kurland †  
Barbara LaVerdi  
& Bryan Donnelly †  
Matthew López & Brandon Clarke  
Faheem & Laurie Masood  
Diane & Jerry McCue  
Jeff & Lisa Paille  
Elizabeth Rennert\* †  
Averil & Michael Riley †  
Elise Rosenfeld †  
Krestie Utech †  
Charis & Rich Warshof †  
Helen A. Zamboni  
& Steven I. Rosen †

### \$7,500-\$9,999

Bonnie Garner  
Joanna & Michael Grosodonia †  
Tom & Tammy Rogers  
Richard Schwartz †  
Elizabeth M. Teall

### \$5,000-\$7,499

Anonymous  
Peggy Boucher †  
Barbara & John Bruning †  
Philip & Sharon Burke  
Margaret & Tim Busch  
Essie Calhoun-McDavid  
& Bernard McDavid  
Betsy & John Carver †  
Gloria Culver & Joe Anderson  
Bill Eggers & Deborah McLean  
Dave & Nance Fiedler †  
Richard & Kim Gray  
Norman Horton+ †  
Glenn & Nancy Koch  
Connie L. Leary  
Christine Licata  
Dan & Kiki Mahar  
Nanci Malin & Abe Weiss  
Michael & Frances Millard

## LEADERSHIP CIRCLE (cont.)

Dan & Jo-Ann O'Brien  
Laurel Pace  
Don & Robin Pulver  
Janet S. Reed  
Drs. Carl & OJ Sahler  
Gail Shoemaker  
Joan & Ken Slater †  
Susan & Robert Toussaent\*  
John S. Tritten  
Janet M. Tyler †  
Dr. Stephen R. Webb  
Sherwin Weinstein  
& Linda Cornell Weinstein\* †  
John C. Williams  
Herb Winkelmann, Jr.

## SPOTLIGHT CIRCLE

### \$2,500 - \$4,999

Anonymous  
Daniel & Elizabeth Abbas  
Jeanine Arden-Ort  
& Dr. Daniel Ornt  
Robert D. Baden †  
Dennis & Mary Bassett  
Carol & John Bennett  
Barbara Berman  
Nelson A. Blish & Sharon Stiller  
Robert & Diane Boni  
David J. & Margaret M. Burns  
Center for Adolescent  
& Young Adult Health  
Joan S. Dalberth  
Barbara de Leeuw  
Gary M. Domenico  
& Barbara E. Buscaglia  
Ann Dozier & Guy Martin  
Hope Drummond  
Peter Fackler & Kelly Barrett  
James & Kathy Farrar  
Richard+ & Joan Fenton\*  
Paul & Mary Fromm<sup>5</sup>  
Ellen Garfinkel  
Pam Giambrone †  
Ellen H. Goldenberg  
Lori & Scott Green  
Christina Gullo & John A. Mueller  
Terry & Eileen Hartmann  
James Haskins & Michael Whistler  
Nan & Tom Hildebrandt †  
Dr. Jack & Harriette Howitt  
Emily Jones & Deborah Hughes  
Paul & Lynne Kroner  
Abhas Kumar  
& Chetna Chandrakala  
Diane & Stephen LaLonde  
Jennifer Leonard  
& David Cay Johnston  
Edith M. Lord  
Carol & Nick Love †

## SPOTLIGHT CIRCLE (cont.)

Sarah Mangelsdorf  
& Karl Rosengren  
Lisa Martinez DeVinney  
Pamela McGreevy  
Peter & Beth Messner  
Steve Metzger  
Barbara Mitacek\*\*  
Robert Neale & Rick Parlier  
Rhonda Noto  
William J. O'Connor, Jr.  
Shree Pandya  
Karen & Don Pryor  
Dr. Gerald & Maxine Rosen  
Jonathan Rosenfeld & Jerry Fisher  
Laura J. Sadowski  
Harold & Judy Samloff  
Gary B. Schaefer  
Wolf & Elizabeth Seka  
Kelly & Kathleen Shea  
Malcolm & Elaine Spaul  
Franecen Elias-Stein & Todd Stein  
James & Georgine Stenger  
Bob & Gayle Stiles  
Jim & Pam Stoffel  
Joshua Stubbe & Katie Baynes  
Wynndy Turner  
Joyce & William Weir  
Carol J. Whitbeck  
Elizabeth Williamson  
& Jennifer Tennant  
Nicki Zongrone

### \$1,500 - \$2,499

Robert Albach  
Pamela & Todd Allen  
Drs. Karen & Mark Blazey  
Suzanne Bell & Chris Brown<sup>5</sup>  
Mary & Brendan Brady<sup>5</sup>  
Keith & Celeste Cleary<sup>5</sup>  
Mark Cuddy & Christina Selian  
John & Alison Currie<sup>5</sup>  
Mr. Raymond Dreher &  
Dr. Elaine Tunaitis  
Sergio & Mary Ann Esteban †  
Carl Grimm  
Sue & Jim Haefner  
Laurie Haelen & Mary McCrank  
Carol K. Hardy  
Elmer C. Hartman  
Nancy D. Hessler<sup>5</sup>  
Daniel & Barbara Hoffman  
In honor of Lisa Hoffman,  
who loved her Geva family  
Jean Horton  
Victoria Kaminski  
Hon. Joan S. Kohout  
Karen Kral  
Mary Ellen Lansing  
Bruce & Eleanor McLeer  
Wes & Mary Micket<sup>5</sup>

# ANNUAL FUND DONORS

## SPOTLIGHT CIRCLE (cont.)

Stacey Miller & Brad VanAuken  
Nannette Nocon  
& Karl Wessendorf †  
David & Marjorie Perlman  
Mary Jane Proschel  
Timothy Slisz  
Thomas Smith  
Sharon & Leal Smith<sup>5</sup>  
Rev. Nancy D. Stevens  
& Mr. David L. Williams<sup>5</sup>  
Maggie & Charlie Symington †  
Scott Turner  
& Mary Worboys-Turner  
Sheree Usiatynski & David Evans  
Judy & Erik von Bucher  
Nina Walker  
John & Melanie Ward  
Philip & Anne Wehrheim  
Kathy Wheat & Fred Schulte

## \$1,000 - \$1,499

Anonymous  
Susan Anderson  
Jeanne M. Beecher  
Eric & Marcia Birken  
Mary Allison Callaway  
Catherine Callery & Michael Nazar  
Katherine Cove<sup>5</sup>  
Suzanne & Allan Chapman  
Terry Doherty  
David & Anne Ferris  
Carolyn Fisher & Tim Olsen  
Sandra Foley  
Ann & Steve Fox<sup>5</sup>  
Bob & Bobbie Freitag  
Dom & Nita Genova  
Don & Natalie George  
William & Susan+ Gornall  
Brigitte Gueldenpfennig  
Ebets & Tom Judson<sup>5</sup>  
Judy & Norm Karsten  
June Kinsella  
Arnold Kovalsky  
Marcy & Ray Kraus  
Rahul & Nirupama Laroia  
Amy Libenson & Brett Shulman  
Todd Liebert  
Christopher & Susan Luedde  
Patrick Macey & Jerry Casey  
Richard Mapes  
Ralph & Martha Meyer  
Thomas & Patricia Mitchell  
Don & Roxann Muller  
Thomas Murney  
Kathy & Ted Nixon  
Lois & John Palomaki  
Thomas & Nancy Poeth  
Dr. Ramon & Judith Ricker  
Nellie Rosenberg  
Anthony & Gloria Sciolino  
Richard R. Spellicy  
Jacqueline Sperandio

Richard & Sandy Stein  
Samantha & Robert Tassone  
Jean Carty Weaver  
Richard Whitmore

## \$500 - \$999

Karen Abbas  
Martin Abraham  
Neil Ambrosini  
David & Marca Anderson  
David & Jan Angus<sup>5</sup>  
Betsy & Gerald Archibald  
Virginia Bachelor & Skip Battaglia  
Jim & Linda Barroody  
Brian Bennett  
Robert Bergin  
Linda M. Betstadt<sup>5</sup>  
Dennis & Amy Boike<sup>5</sup>  
Jeff & Kathy Bowen<sup>5</sup>  
Bill Chandler  
Susan & Frank Crego<sup>5</sup>  
Steven Daniel & Joan Zeller  
Joe & Judy Darweesh<sup>5</sup>  
Gabriel Del Vecchio  
Dan & Jody DiLoreto  
Joanne & Mark Drexler  
Marjorie & Stephen Elder  
Gerald G. Estes<sup>5</sup>  
Sherman & Anne Farnham  
Joan Feinbloom+  
Andrea & Richard Feldman  
Susanna Ferris  
Robin Fisher  
Sandra & Neil Frankel  
Julie Frost  
Robert Goeckel & Gay Greene  
Cynthia Goetzmann  
Martin & Sherrie Handelman  
Joe & Linda Hanna<sup>5</sup>  
Chris Hastings  
Mary E. Haverfield<sup>5</sup>  
A. Dirk & Linda Hightower  
John & Barbara Holder<sup>5</sup>  
Audrey Holly  
Louise D. Holmes  
John & Bonnie Hood\*  
Holly Howell  
Douglas & MaryAnne Jones<sup>5</sup>  
Thomas & Mary Jones  
Cornelia Kamp  
Rabbi Alan & Rabbi Jan Katz  
Michael Keefe & Joann Surre-Keefe  
David A. & L. Laurie Kennedy  
Mark Kolko & Mona Friedman Kolko  
Ellen & Charles Konar  
Thomas Krugh  
Michael & Marcy Kucharski  
Thomas & Connie Lathrop  
Meg & Bill Lloyd<sup>5</sup>  
Thomas & Sandra Madejski<sup>5</sup>  
Massie Family Fund at Rochester  
Area Community Foundation  
Thomas & Betsy Matthews  
Gail Mazur

Stanley & Janis McCormack  
Sanford & Jill Miller  
Jonathan Mink & Janet Cranshaw  
Helen Newman  
Marie & Donald Oakleaf  
Martha & Kevin O'Brien  
Viny Orlandini  
Eric & Penelope Pankow\*  
Rick Papaj  
Marian Payson & Helen Wiley  
Priscilla Petersen  
Marjorie Power  
Edwin & Roberta Przybylowicz  
Mr. & Mrs. Andrew Publow  
Ken & Sheila Reasoner  
James G. Reed  
Abby & Josh Reinhard  
Valerie & Stefan Reuss  
Nancy Rice  
Bea Rosenbloom  
Richard & Louise Sadowski  
Caroline Schultz  
Kate Sheeran  
Jim & Marie Sorrentino  
Tammy Strassburg  
Dave Tang  
Edward Tanner & Elizabeth Treiber  
Janis Tomei  
Wayne & Anne Vander Byl  
Pierce & Elizabeth Webb  
Anne Wallace  
Bill & Linda Wallace  
Susan & Paul Wilkens  
Kitty J. Wise

## \$250 - \$499

Anonymous (2)  
Carol Adler  
Thomas & Ann Adler  
Michael Amorese  
Bob & Dawn Auerhahn  
Mary Jane Bufundo  
Jim & Laurie Barr  
James Bertsch  
Jon & Pat Bertucci  
MaryAnn & Peter Borrelli  
Patricia Bradley  
Linda D. Brooken  
Robert Buhite  
Andrew Burke  
Bruce Coates  
Michael & Elizabeth Burns  
Lori Busch  
Stephanie Caffera  
Jane Capellupo  
Thomas Casselman  
Robert & Barbara Castle  
Vanessa Cheeks  
E. A. Claypoole<sup>5</sup>  
Bruce Coates  
Dennis & Sharon Conheady  
Carol & Stuart Cooper  
Jacqueline Davis  
Linda Delaney

# ANNUAL FUND DONORS

James Dillon  
 The Dominas Family  
 Lynn & Pam Eberhardt  
 Samuel L. Edwards  
 & Judith K. Rickey  
 Trevor & Elizabeth Ewell  
 Georg Farrak  
 Elizabeth Fisher  
 Ty Foster  
 Lauren Frank & Annette Miller  
 Lisabeth Frarey & Michael Christie  
 Bruce & Elizabeth Freeland  
 Janet Gates  
 Andrew & Jacquie Germanow  
 Joy Goodman & John Sawyer  
 Frances Gotcsik  
 William & Ruth Grace  
 Dorothy Halligan  
 Jeff & Ruth Hedin  
 Ken Hendel  
 Carol Herring  
 Donna & John Himmelberg  
 James & Betsy Hoefen  
 Ellen Horey-Thiede  
 James & Sherrill Ison  
 Drs. Nadette Jacob & Jules Zysman  
 Gail & Howard Jehan  
 Cary Jensen  
 Robert G. Kimmel  
 Patrick & Elizabeth Kinney  
 Werner & Susan Kunz  
 Kathleen & Alfred Laitenberger\*  
 John Lebens & Florence Higgins  
 Thomas & Terri Lee<sup>5</sup>  
 Melissa Levi  
 Litt Family Fund  
 Dara Lubin  
 Ruth & Alfred Marchetti  
 Judie & George Mayo  
 Tom & Emily McCall  
 Merri-Lou McKeever  
 Chris & Karen Mesoletta  
 Daniel M. Meyers<sup>5</sup>  
 Richard Nangreave & Olga Mendez  
 Thomas & Ronnie Nescot  
 Charlie Owens  
 Phil Palumbo  
 Maureen & Marty Palumbos  
 Robert & Linda Pearles  
 James Peters  
 Frank Petrus  
 Dr. Lee D. Pollan  
 Aqua Porter  
 Gerianne Puskas

Michael Radler  
 Mark Raeside  
 Dawn Riedy & David Berg  
 Michael & Linda Riordan  
 Michele Rivera  
 Russell R. Roberts  
 Marion Robinson<sup>5</sup>  
 Eugene & Marlene Rogalski  
 Karen Ross  
 Charles & Carolyn Ruffing<sup>5</sup>  
 Christine Schaller  
 Kenneth Schirmuhly  
 David & Nancy Schraver  
 Drs. David & Carolyn Schuler  
 Jon & Katherine Schumacher  
 Norm & Jane Silverstein  
 Jennifer Steier  
 Ann H. Stevens  
 & William J. Shattuck  
 Marianne Sullivan  
 Thomas & Linda Sullivan  
 Thomas & Rose Swartz  
 Alexandra Terziev & Allan Greenleaf  
 Sue & Karl Thielking<sup>5</sup>  
 Helen Urzetta Tortorici  
 Charles & Marian Turner  
 Sandra Vallot  
 Patricia H. Wehle  
 Robert S. Westfall  
 Mary Ann Whitmore  
 John & Laurie Witmeyer<sup>5</sup>  
 Lorraine Woerner  
 Peng Wu  
 Eric Zeise & Ellen Henry  
 Charlie & Judy Zettek<sup>2</sup>  
 David & Mary Lou Zimpfer  
 Marcia & Ted Zornow

## Other Donors included in Visionary Society

Anonymous (2)  
 Robert August  
 Helen H. Berkeley  
 Joyce & Allen+ C. Boucher  
 The Gouvernet Arts Fund at The  
 Community Foundation  
 Warren+ & Joyce Heilbronner  
 Gwendolyn Hoffberg  
 Joanne Gianniny  
 Jack & Barbara Kraushaar  
 Dan & Nancy Loughran  
 Jeanne B. McHugh+  
 Mike & Mary Ninnie  
 Dan & Jo-Ann O'Brien

Jane Parker & Fran Cosentino  
 Wolfgang Pfizenmaier  
 Stephen I. Rosenfeld+  
 William H.+ & Anne Saunders  
 Kim & Janet Tenreiro  
 Mimi & Sam Tilton  
 Elizabeth Vanhorn+  
 Robert E. Williams+  
 Deborah Wilson  
 Susan Yara+  
 Eric I. Zeller Fund at Rochester Area  
 Community Foundation

<sup>†</sup> Donors whose lifetime philanthropic commitment totals over \$100,000

<sup>5</sup> Donors who have made a three-year commitment to Geva's Annual Fund

\*Education Supporters

\*\*Literary or New Works Supporter

+Deceased

*We have made every effort to ensure the accuracy of these donor lists. However, if you see an error or omission, please accept our apology, and kindly call the Development Office at (585) 420-2049.*



**Support what matters most  
 to you at Geva—your way.**



*Geva Theatre gratefully recognizes the following generous donors who have made a three-year commitment of \$2,500 or more to Geva's Annual Fund.*

*(Donations listed are for the time period 4/1/25 to 3/31/26.)*

Anonymous  
 Daniel & Elizabeth Abbas  
 Jeanine Arden-Ornt  
 & Daniel Ornt  
 Dennis & Mary Bassett  
 Katie Baynes & Joshua Stubbe  
 Carol & John Bennett  
 Nelson A. Blish & Sharon Stilller  
 Robert & Diane Boni  
 Peggy Boucher  
 Barbara & John Bruning  
 Philip & Sharon Burke  
 David J. & Margaret M. Burns  
 Margaret & Tim Busch  
 Essie Calhoun-McDavid  
 & Bernard McDavid  
 Betsy & John Carver  
 Center for Adolescent  
 & Young Adult Health  
 Gloria Culver & Joe Anderson  
 Ann Dozier & Guy Martin  
 Hope & Lance Drummond  
 William Eggers  
 & Deborah McLean  
 Franceen Elias-Stein  
 & Todd Stein  
 Richard+ & Joan Fenton  
 Dave & Nance Fiedler  
 Paul & Mary Fromm  
 Patrick & Barbara Fulford  
 Bonnie Garner  
 Ellen H. Goldenberg  
 Lori & Scott Green  
 Joanna & Michael Grosodonia  
 Christina Gullo  
 & John A. Mueller

James Haskins  
 & Michael Whistler  
 Jane Hasselkus & Richard Edic  
 Dr. Tomás C. Hernández  
 & Dr. Keith S. Reas  
 Emily Jones & Deborah Hughes  
 Joe & Dale Klein  
 Paul & Lynne Kroner  
 Abhas Kumar  
 & Chetna Chandrakala  
 Harold & Christine Kurland  
 Diane & Stephen LaLonde  
 Barbara LaVerdi  
 & Bryan Donnelly  
 Jennifer Leonard  
 & David Cay Johnston  
 Edith M. Lord  
 Carol & Nick Love  
 Dan & Kiki Mahar  
 Lisa Martinez DeVinney  
 Faheem & Laurie Masood  
 Diane & Jerry McCue  
 Peter & Elizabeth Messner  
 Steve Metzger  
 Michael & Frances Millard  
 Barbara Mitacek  
 Robert Neale & Rick Porlier  
 Nannette Nocon  
 & Karl Wessendorf  
 Rhonda Noto  
 William J. O'Connor, Jr.  
 The Pace Family Fund  
 Shree Pandya  
 Don & Robin Pulver  
 Averil & Michael Riley  
 Tom & Tammy Rogers

Dr. Gerald & Maxine Rosen  
 Laura J. Sadowski  
 Drs. Carl & OJ Sahler  
 Harold & Judy Samloff  
 Gary B. Schaefer  
 Richard Schwartz  
 Gail Shoemaker  
 Joan & Ken Slater  
 Malcolm & Elaine Spaul  
 James & Georgine Stenger  
 Bob & Gayle Stiles  
 Jim & Pam Stoffel  
 Elizabeth M. Teall  
 Susan & Robert Touhsaent  
 John S. Tritten  
 Wynndy Turner  
 Janet M. Tyler  
 Krestie Utech  
 Charis & Rich Warshof  
 Sherwin Weinstein  
 & Linda Cornell Weinstein  
 Joyce & William Weir  
 Carol J. Whitbeck  
 John C. Williams  
 Elizabeth Williamson  
 & Jennifer Tennant  
 Herb Winkelmann, Jr.  
 Helen A. Zamboni  
 & Steven I. Rosen

*We have made every effort to ensure the accuracy of these donor lists. However, if you see an error or omission, please accept our apology, and kindly call the Development Office at (585) 420-2049.*

## HANDS-ONLY CPR

For lifesaving tools,  
 tips and how to  
 participate visit the  
 website below:



**CITY of ROCHESTER**  
 Malik D. Evans, Mayor



**cityofrochester.gov/  
 heartsafe**



# GEVA LEGACY SOCIETY

*Geva Theatre gratefully acknowledges the generosity of the following friends of the theatre who have formalized their commitment to Geva in their estate plans:*

Anonymous (2)  
 Jeanne M. Beecher  
 Helen H. Berkeley  
 Allen C. Boucher\*  
 Beverly T. Bowen\*  
 John & Betsy Carver  
 Derek & Janice Chapman\*  
 Glenn & Rebecca Fadner  
 Donna Fielding\*  
 Kenneth J. Figenschner\*  
 Elizabeth Fisher  
 David & Linda Friedman  
 Jay+ & Betsy T. Friedman  
 Patrick & Barbara Fulford  
 Susan J. Gornall\*  
 Julia Grant  
 Jean Edgcumb Groff\*  
 Richard & Marilyn+ Hare  
 Warren\* & Joyce Heilbronner  
 Drs. Tomás D. Hernández  
 & Keith S. Reas  
 Nancy D. Hessler

David L. Hoffberg\*  
 Norman Horton\*  
 Nancie R. Kennedy\*  
 Linda Kilbourne  
 Jack & Barbara Kraushaar  
 Drs. Dawn & Jacques+ Lipson  
 Richard Malinich\*  
 Joseph Mancini\*  
 Jeanne B. McHugh\*  
 Ernestine W. Murray Chandler\*  
 Eunice\* & Donald Naulin  
 Emily Neece & Alan Ziegler+  
 Dolores B. Owens\*  
 Laurel Pace  
 Ann B. Parks\*  
 Dr. Ramon & Judith Ricker  
 Marie Roberts  
 Dr. & Mrs. Harry Rosen  
 Stephen I. Rosenfeld\*  
 Laura J. Sadowski  
 James G. Scanzaroli\*  
 Richard & Vicki\* Schwartz

Joan & Ken Slater  
 Ms. Rusty Smith\*  
 Frederick & Mabel Stehler\*  
 Maggie & Charlie Symington  
 Elizabeth M. Teall  
 Kim & Janet Tenreiro  
 Janet & John R. Tyler, Jr.\*  
 Brad VanAuken  
 Elizabeth VanHorn\*  
 Sherwin Weinstein &  
 Linda Cornell Weinstein  
 Henry W. Williams, Jr.\*  
 Robert E. Williams\*  
 Catharine J. Wise  
 John & Laurie Witmeyer  
 Robert B. Wolf  
 & Mary Alice Wolf\*  
 Susan Yara\*  
 Helen A. Zamboni

\* Gift has been realized  
+Deceased

We would be pleased to know if you have included Geva in your estate plans so that we may appropriately honor you.

For information about the Legacy Society, please contact the Development Office at (585) 420-2049.

*We have made every effort to ensure the accuracy of these donor lists. However, if you see an error or omission, please accept our apology and kindly call the Development Office at (585) 420-2049.*

Geva's Audio Description Program is named after

**LISA HELEN HOFFMAN**

who fearlessly advocated for access to the arts for individuals who are blind or low vision.

She will always be remembered.

October 2019

## Support the Magic of Geva

With your generous support, we can continue to stage remarkable performances that inspire and captivate audiences. Join us in safeguarding the future of world class live regional theatre. Donate to Geva Theatre Today.



Scan the QR Code with your phones camera for more information

# TRIBUTES

## In Memory of ...

### **Margaret Bartlett**

Diana Moore

### **Arlene & Bernie Bialaszewski**

Anne Melendez

### **Michael Bowllan**

Joanna & Michael Grosodonia

### **Alan & Joyce Bush**

Marcy Bush

### **Lana Cohen**

Dr. Gerald & Maxine Rosen

### **Dr. Salvatore Dalberth**

Joan S. Dalberth

### **Bruce Dean**

Nancy Hill Dean

### **Cynthia DeFelice**

Eileen Godfrey

### **Shirley W. Dehority**

John Dehority

### **Trish & Teale Dominas**

Love, Glen

### **Richard Fenton**

Robert D. Baden  
Laura J. Sadowski

### **Rev. & Mrs. E. Robert Ferris Jr.**

Susanna Ferris

### **Shirley M. Ferris**

Susanna Ferris

### **Sandra Fortunato**

Sharon & Carl Wheat

### **Marilyn Galley**

Joseph Galley

### **Charlotte Graeter**

Joyce Henzel

### **Dortha Haskins**

Elizabeth M. Teall  
John C. Williams  
Sherwin Weinstein &  
Linda Cornell Weinstein

### **Maureen Hendel**

Ken Hendel

### **Lisa Helen Hoffman**

Daniel & Barbara Hoffman  
Marilyn Tedeschi

### **Maureen D. Holtzman**

Ann Beale  
Joanna & Michael Grosodonia  
John Holtzman  
Ann Holtzman Beale  
Janet Holtzman Gates  
Ellen Holtzman Zeph  
Marcia Ladd  
Carol & Nick Love  
Claudia Orlando  
Katherine Wolf

### **Dee Kamp**

Cornelia Kamp

### **Sharon Kimmel**

Robert Kimmel

### **Connie Kittle Neer**

Tina Lynch

### **Julie Kraushaar Zurcher**

Werner Zurcher

### **Dr. Marvin Lederman**

Dr. Gerald & Maxine Rosen

### **Erna Lever**

Elizabeth Baskin

### **Steve Luick**

Glenda Giles-Luick

### **James Morey**

Jeanne Morey

### **Ileen Nelson Sadowski**

Carol & Nick Love  
Joanna & Michael Grosodonia  
Louisa Pierson

### **Arnold & Janice Ornt**

Jeanine Arden-Ornt & Daniel  
Ornt

### **Priscilla E. Petersen**

The Very Rev'd William H.  
Petersen

### **Anne Richards**

Diana Moore

### **Doris Ann Rocha**

Andrea Rocha

### **Steve Rosenfeld**

Ellen H. Goldenberg

### **Diane Shear**

Dr. Gerald & Maxine Rosen

### **Joseph F. & Mary Ellen Slisz**

Timothy Slisz

### **Rich Stevens**

Karen Stevens

### **Robert W. Sweeney**

Gerald G. Estes

### **Francisco L. Thorne**

Yvonne Thorne

### **Bill Towler**

Elizabeth M. Teall

### **Margene Wagstaffe**

& Lois Anderson  
Marcy & Ray Kraus

### **Paul & Doris Waterman**

Natalie Lemmon

### **Sterling L. Weaver**

Jean Carly Weaver

### **Alan R. Ziegler**

Anonymous  
Dennis & Amy Boike  
Amy Bowen  
Twyla Cummings  
Rose Ericson  
Joanne Everts  
Lauren Frank & Annette Miller  
Betsy T. Friedman  
Bonnie Garner  
Laura T. Garrison  
Donna Gillespie  
Justin & Leah Goldman  
John & Roslyn Goldman  
Marjorie Grinols  
Joanna & Michael Grosodonia  
Elizabeth Harrison  
Nancy D. Hessler  
Rose-Marie Klipstein

*We have made every effort to ensure the accuracy of these donor lists. However, if you see an error or omission, please accept our apology, and kindly call the Development Office at (585) 420-2049.*

Mark Kolko & Mona Friedman  
 Kolko  
 Carol & Nick Love  
 Dr. Gary & Ruth Myers  
 Maureen & Marty Palumbos  
 Nancy Phelps  
 Louisa Pierson  
 Gus Platas  
 Jane Plitt  
 Susan & Nick Robfogel  
 Harris Rusitzky  
 Dana R. & Helen M.  
 Schillinger  
 Kenneth Schirmuhly  
 Philip Scully  
 Maggie & Charlie Symington  
 Elizabeth M. Teall  
 Sherwin Weinstein  
 & Linda Cornell Weinstein  
 John C. Williams  
 Barbara Zappia

**Daniel Zimpfer**  
 David & Mary Lou Zimpfer

In Honor of ...

**Ruth Brown Anderson**  
 Barbara Stevens

**Peggy Boucher**  
 Jim Boucher

**Margaret Busch**  
 Richard Mapes

**Mark Cuddy**  
 Anonymous

**Tansy Deutsch**  
 Nancy Brown

**Hope Drummond**  
 Clarice Brown

**Bonnie Garner**  
 Patti Donoghue

**Andy Germuga**  
 Joel Shapiro

**Christina Gullo**  
 7Crest Financial Partners-  
 Ameriprise

**Gary Haines**  
 Darlyne Johnston

**Jane Hasselkus**  
 7Crest Financial Partners-  
 Ameriprise

**Bruce & Sherry Marche**  
 John Williams

**Dan Meyers**  
 John C. Williams

**Bob Neale & Rick Porlier**  
 John C. Williams

**Nannette Nocon**  
 Gilbert Chan  
 Linda Epstein & Robin  
 Benmergui  
 Richard Mapes

**Roger & Kim Palma**  
 Frank Petrus

**Shree Pandya**  
 7Crest Financial Partners-  
 Ameriprise

**Jimmy Payne**  
 Mona Sepulveda

**Jacob Pulawski**  
 Kathleen Marks

**Don & Katie Root**  
 Marc Pelka

**Jerry Rosen**  
 Arthur & Joan Segal

**Elise Rosenfeld**  
 Ellen H. Goldenberg

**Laura J. Sadowski**  
 Patti Donoghue

**Colonel Dan Snyder**  
 Teresa Levy

**Taylor & Sarah Simmons**  
 Vanessa I. Simmons

**John C. Williams**  
 Retired Professionals Society

**Catharine Wise**  
 Martin Zemel & Laura Fulton

# ENCORE SUPPORTERS

*Geva Theatre thanks the following donors for their generous contributions to Encore 2025, the theatre's annual summer fundraising gala.*

## PRESENTING SPONSOR

7Crest Financial Partners  
A private wealth advisory  
practice of  
Ameriprise Financial Services, LLC.

## HONORARY CHAIR

Margaret and Tim Busch  
*The Busch Family Foundation*

## PLATINUM SPONSOR

ESL Charitable Foundation  
Barbara LaVerdi & Bryan Donnelly

## GOLD SPONSOR

Empire Digital Signs  
Madeline's Catering

## SILVER SPONSOR

Barbara & John Bruning  
Philip & Sharon Burke  
Hope & Lance Drummond  
Nita Genova  
Diane & Jerry McCue  
Helen Zamboni & Steven Rosen

## BRONZE SPONSORS

Entre Computer Services  
LaBella Associates  
RG&E  
Tito's Handmade Vodka  
Wegmans Food Markets  
Essie Calhoun-McDavid  
& Bernard McDavid  
Pam Giambrone  
Joanna & Michael Grosodonia  
Jane Hasselkus & Richard Edic  
Robert Neale & Rick Porlier  
Shree Pandya  
Elizabeth Teall  
Mary Worboj-Turner  
& Scott Turner

## ANGEL AUCTION DONORS AND ADDITIONAL SPONSOR

*(Donors of \$250 or more)*  
Anonymous  
Martin & Nancy Abraham  
Dennis & Mary Bassett  
Katie Baynes & Joshua Stubbe  
Rob Buhite & Cathy Hahn  
Lori Busch  
Margaret & Tim Busch  
Essie Calhoun-McDavid  
& Bernard McDavid  
Essie Calhoun-McDavid  
& Bernard McDavid  
Vanessa Cheeks & Adam Chodak  
Sherwin Weinstein  
& Linda Cornell Weinstein  
Mark Cuddy & Christina Selian  
Barbara de Leeuw  
Terry Doherty  
Dave & Nance Fiedler  
Ty Foster

Julie Frost  
David & Patricia Gardner  
Frances & George Gotschik  
Lori & Scott Green  
Joanna & Michael Grosodonia  
Christina Gullo & John A. Mueller  
Dorothy Halligan  
James Haskins & Michael Whistler  
Jane Hasselkus & Richard Edic  
Christopher Hastings  
& Hilary Rosenfeld  
Carol Herring  
Emily Jones & Deborah Hughes  
June Kinsella  
Connie & Thomas Lathrop  
Barbara LaVerdi & Bryan Donnelly  
Alex & Melissa Levi  
Bob August & Chris Licata  
Sarah Kroetz & Dara Lubin  
Faheem & Laurie Masood  
Diane & Jerry McCue  
Merri-Lou McKeever  
Chris & Karen Mesoelle  
Steve Metzger  
Thomas & Pat Mitchell  
Nannette Nocon  
& Karl Wessendorf  
Martha & Kevin O'Brien  
William J O'Connor Jr  
Catherine & Vinny Orlandini  
Rick Papaj  
Aqua Porter  
Michael Radler  
Marlene & Eugene Rogalski  
Anonymous  
Kate Sheeran  
Norm & Jane Silverstein  
Jennifer Steier & Chris Zeltmann  
Tammy Strassburg  
Olena Prokopovych & David Tang  
Bob & Samantha Tassone  
Elizabeth M. Teall  
Wynndy Turner  
Sandra Vallot  
Dr. Stephen R. Webb  
Joyce & William Weir  
Carol J. Whitbeck  
Lorraine Woerner  
Scott Turner  
& Mary Worboj-Turner  
Helen A. Zamboni  
& Steven I. Rosen  
John & Nicki Zongrone

## IN KIND SUPPORT

Billsboro Winery  
Century Wine and Liquor  
Deer Run Winery  
Empire Digital Signs  
Entre Computer Services  
Fox Run Winery  
Genesee Brewery  
Gourmet Goodies  
Madeline's Catering  
Panther Graphics

Ravines Winery  
Rockcastle Florists  
Titos Handmade Vodka  
Wegmans

## AUCTION & WINE DONORS

*(Donors of \$250 or more)*  
Arthur Murray Dance Studio  
BayCreek Paddling Center, Inc.  
Billsboro Winery  
Black Button Distilling  
BOA Ltd.  
Body20-Pittsford  
California Closets  
Carnegie Cellars  
Century Liquor and Wines  
Crazy Dog T-Shirts  
Deer Run Winery  
Ethan Allen Pittsford  
Design Studio  
Finger Lakes Opera, Inc.  
Gourmet Goodies  
House of Guitars  
Hyatt Rochester  
ImageOut  
Jackson Family Wines  
L'Objet Wines  
Landmark Society of  
Western New York, Inc.  
Locust Hill Country Club  
Lollypop Farm  
MAE Beads  
MansoWear  
New York Kitchen  
Pinnacle Wine & Liquor  
Rocco Restaurant:  
Monroe Avenues  
Cafe & Wine Bar  
Rochester Broadway  
Theatre League  
Rochester Red Wings  
Rohrbach Brewing Co.  
Stefan Otter Jewelers  
Susan B. Anthony Museum  
& House  
Tantalo Fine Portraits  
The Glimmerglass Festival  
Tito's Handmade Vodka  
Vault Cycle + Box + Move  
Wegmans Food Markets  
WROC  
Philip & Sharon Burke  
David & Nance Fiedler  
Barbara LaVerdi & Bryan Donnelly  
Faheem & Laurie Masood  
Nannette Nocon  
& Karl Wessendorf  
Charlie Owens  
Shree Pandya  
Sabine Sally  
Robert Sanders  
Frederick Schamu  
Peter Shea  
Elaine G. Spauill  
John C. Williams

## GOVERNMENT SUPPORT

*Geva Theatre gratefully acknowledges the support of*



The New York State Council on the Arts, with the support of Governor Kathy Hochul and the New York State Legislature



The County of Monroe and the County Executive Adam Bello



Empire State Development - Division of Tourism - I LOVE NEW YORK



AUDITORIUM THEATRE

The 2026-2027 M&T Bank Broadway Season

PRESENTED BY THE ROCHESTER BROADWAY THEATRE LEAGUE AND ALBERT NOCCIOLINO



**BOOP!**  
THE MUSICAL

OCTOBER 3-10, 2026



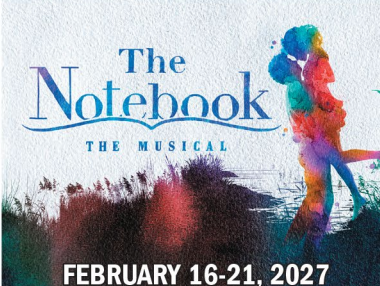
ALICIA KEYS'  
**HELL'S KITCHEN**  
BROADWAY'S HIT MUSICAL

NOVEMBER 3-8, 2026



RODGERS & HAMMERSTEIN'S  
**The SOUND of MUSIC**  
BOOK BY LINDSAY & CROUSE  
MUSIC BY JACK O'BRIEN

DECEMBER 1-6, 2026



**The Notebook**  
THE MUSICAL

FEBRUARY 16-21, 2027



WORKING THEIR WAY BACK TO YOU  
**JERSEY BOYS**  
THE ORIGINAL TONY-WINNING SENSATION RETURNS  
20th Anniversary

MARCH 16-21, 2027



Disney  
**THE LION KING**  
THE WORLD'S #1 MUSICAL

APRIL 28-MAY 16, 2027



TONY AWARD WINNER! BEST MUSICAL  
**THE OUTSIDERS**

JUNE 15-20, 2027

SUBSCRIBE TODAY AT [RBTL.ORG](http://RBTL.ORG)

# NextGenGeva

Members ages 20 to 40  
can access savings to

**ALL Geva Season Shows!**

Visit [gevatheatre.org/subscription](http://gevatheatre.org/subscription) to learn more.

## volunteers needed

to help  
deliver  
food



**Feed  
More  
wny**

(716) 822-2002  
[feedmorewny.org](http://feedmorewny.org)



scan to  
sign up



Vision Automotive  
 is proud to support the  
**arts in our community!**

Bring in this ad and receive an additional

**\$500 OFF**

your best deal on any car purchase\*

\* Offer expires 8/31/26.



[visionauto.com](http://visionauto.com)



# Allendale Columbia School

## IT STARTS HERE.



AC delivers student-centered instruction you won't find anywhere else. We turn passion into purpose and curiosity into curriculum, where students from 18 months to Grade 12 discover a love of learning.

### At AC, families can expect:

- Inquiry-based learning
- Independent, creative thinking
- Small class sizes
- Individualized curriculum
- Enrichment opportunities
- College counseling
- Flexible tuition
- Fresh nutritious meals

## FIRST HERE, THEN ANYWHERE.

Contact us to learn more  
at [allendalecolumbia.org](http://allendalecolumbia.org)



SCAN TO  
SIGN UP  
FOR A TOUR



GIVE NEW MEANING TO WHAT TRULY MATTERS.

At ESL, we believe in the worth of our collective strength — to uplift the whole community and help you thrive where you belong.

ESL is proud to support **Geva Theatre** because creativity connects us all.

FRANCESCA  
ESL EMPLOYEE



[esl.org/you-belong](https://esl.org/you-belong)

Membership subject to eligibility. ESL is a registered service mark of ESL Federal Credit Union.

# Welcome to Lilac Grove



**YOUR NEW OPPORTUNITY FOR VIBRANT LIVING**

## **Now accepting deposits!**

Lilac Grove is a new rental community for adults ages 62 and older. Designed with comfort, convenience and community in mind, this 90-unit apartment complex opens in May 2026.

Lilac Grove is here to meet your needs and enhance your lifestyle. As part of the Jewish Home campus, you'll have access to a variety of amenities, engaging programs and a full spectrum of supportive services.

Let's talk about making your move to Lilac Grove for a convenient, carefree community to call home. For more information or to join our waiting list, please call **(585) 341-2306** or visit **[JewishHomeRoc.org/LilacGrove](https://JewishHomeRoc.org/LilacGrove)**.

