



GEVA THEATRE'S 25/26 SEASON SPONSOR

Neil Simon's
Barefoot
in the **Park**

By **NEIL SIMON**
Directed by **RACHEL ALDERMAN**

FEBRUARY 24 – MARCH 29, 2026

Honorary Season
Producer




Geva
THEATRE



SAT
MAR 21
NEW TIME:
7:30 PM

SUN
MAR 22
2 PM

KODAK HALL
AT EASTMAN
THEATRE

 **PRE-
CONCERT
CHATONE**
HOUR BEFORE
PERFORMANCE

SUPPORTED BY
DR. VICTOR POLESHUCK,
RICHARD STERNS AND
SUZANNA RUBRIGHT

BAROQUE TO BRILLIANCE

FEATURING GIL SHAHAM & ADELE ANTHONY

Andreas Delfs, conductor
Gil Shaham & Adele Anthony, violin

Prepare to be dazzled as "one of the most brilliant couples in classical music" (Guardian), Gil Shaham and Adele Anthony perform Sarasate's fiery *Navarra* and Bach's lively Brandenburg Concerto No. 3. Andreas Delfs leads the RPO in Avner Dorman's world premiere *A Time to Mourn and a Time to Dance* (a Voices of Today commission), an evocative new work blending reflection and celebration. The evening concludes with Mozart's Symphony No. 41 ("Jupiter"), a masterful fusion of drama and beauty.

25/26 SEASON & SERIES SPONSORS:

KIMBO
of Caffe & Sugar

Wegmans

Canandaigua
National Bank

88
Community
BANK

IN LOVING MEMORY OF
LENORE P. LESSER

Pittsford

CLASSICS
National Bank

M&T Bank

25/26 SEASON
MEDIA SPONSORS:

WXII **Kiss 90.7** **and 104.7**

 **RPO** | MUSIC THAT
moves.

585.454.2100 | RPO.ORG



WE'VE GOT IT COVERED.

At SynchroNet, we provide everything from responsive help desk support to enterprise-grade cybersecurity, strategic planning, and cloud solutions for your small business.

We take the time to understand your industry, anticipate challenges, and implement systems that work.

One call. One team.
Total coverage.

Scan to Book Your
Consult Today



WWW.SYNCHRONET.NET
716-677-2677



Invitation to Play

***WE INVITE YOU TO
COME AS YOU ARE.***

Enter the theatre as you are.
Laugh when you feel like laughing.
Cry when you feel like crying.
React and respond how you need to.

***WE INVITE YOU TO
FEEL WELCOME IN
OUR SPACES.***

Please relax and be at home at Geva. Our space is here to welcome you and everyone in our community.

***WE INVITE YOU TO
LEAN INTO YOUR
DISCOMFORT.***

Theatre can entertain; however, theatre can also explore larger issues and questions. Challenge your perspective here at Geva.

***WE INVITE YOU TO
BE BRAVE.***


Join us in challenging assumptions and amplifying marginalized voices. Let's create theatre that reflects the diverse experiences of our world, our country, and our region.

***WE INVITE YOU TO
TELL US WHAT
YOU THINK.***

Share your constructive feedback about your experience at Geva. Email us at dialogue@gevatheatre.org.

***WE INVITE YOU TO
BE IN COMMUNITY
WITH ONE ANOTHER.***

Introduce yourself to your neighbor. Forge new relationships. We're all in this together.



WELCOME

- 5 Welcome
 - A Message from James Haskins, Executive Director
- 6 Production Credits
- 10 Program Feature
 - An Interview with Director Rachel Alderman
- 12 On Stage & Beyond
 - Special Programming & Summer Concerts
- 15 Who's Who
- 21 About Geva Theatre
- 23 Mission, Vision, and Values
- 26 Thank You to Our Supporters

THANK YOU TO OUR SPONSORS FOR BAREFOOT IN THE PARK



GEVA THEATRE'S **25/26** SEASON SPONSOR

HONORARY SEASON PRODUCER



LEAD PRODUCER



MEDIA SPONSORS



OPENING NIGHT SPONSOR



2025-2026 BOARD OF TRUSTEES

EXECUTIVE COMMITTEE

Jane Hasselkus, Chair
Diane F. McCue, Vice Chair
Tom Rogers, Treasurer & Chair, Finance Committee
Helen A. Zamboni, Secretary
Christina Gullo*, Chair, Nominating & Governance Committee
Elizabeth M. Teall, Chair, Development Committee
Wynndy R. Turner, Co-Chair, IDEA Committee
Steve Metzger, Co-Chair, IDEA Committee
Essie Calhoun McDavid, At Large
Lisa Martinez DeVinney, At Large

BOARD OF TRUSTEES

Katie Baynes, Chair, Audit Committee
Philip L. Burke
Margaret Busch
Christie Caldwell
Lisa Martinez DeVinney
Hope Drummond
Bonnie Garner
Richard N. Gray
Lori Green
Christina Gullo*
James Haskins, *ex officio*
Jane Hasselkus
Deborah L. Hughes
Abhas Kumar
Barbara J. LaVerdi
Dr. Dawn Lipson
Faheem Masood
Diane F. McCue
Essie Calhoun McDavid
Steve Metzger

Dr. Miriam M. Moore
Robert Neale
Rhonda Noto
Jeffrey Paille
Shree Pandya
Aqua Y. Porter
Tom Rogers
Eileen Amy Ryan
Jean Gordon Ryon
Laura J. Sadowski
Dr. Elaine Spaul
Elizabeth M. Teall
Bijal Thakkar
Wynndy R. Turner
John C. Williams
Elizabeth Williamson,
ex officio
Helen A. Zamboni

HONORARY TRUSTEES

Dennis Bassett*
Helen H. Berkeley*

Peggy Boucher
Stephanie M. Caffera
Sergio Esteban*
David Fiedler*
Ronald H. Fielding
Betsy T. Friedman*
Patrick Fulford*
Joanna M. Grosodonia*
Tom Hildebrandt
Maureen D. Holtzman+
John F. Kraushaar*
Carol Love*
Peter Messner*
Michael B. Millard*
Emily Neece*
Nannette Nocon
David Perlman
Paul Seidel
Maggie Symington*
Mary Kay Taber
Linda Cornell Weinstein*
Deborah Wilson

Trustees are volunteers and receive no compensation.

*Indicates Former Board Chair +Indicates Deceased

TICKETS

Tickets can be purchased online at GevaTheatre.org, or by phone at 585-232-4382.

Box Office Hours:

Performance Weeks:

Monday: CLOSED

Tuesday-Saturday: Noon-8:00PM

Sunday: Noon - 7:00pm

Non-performance Weeks:

Sunday & Monday: CLOSED

Tuesday-Saturday: Noon-6:00PM

GROUP RATES

Savings of up to 35% off regular ticket prices.

Available for groups of 10 or more.

Call our Sales Manager at (585) 420-2090, or email Groups@GevaTheatre.org for more information.

STUDENT RUSH TICKETS

Available from \$20 for all non-sold out performances, beginning 2 hours prior to curtain time. Students must present valid ID. One ticket per person.

A MESSAGE FROM GEVA'S LEADERSHIP

I first became intrigued by the plays of Neil Simon when I was in college. *Brighton Beach Memoirs*, the first of his autobiographical coming-of-age trilogy, was on Broadway at the time. I was a theatre major at The College of Wooster in Ohio, which had the distinction of requiring all seniors to complete a year-long Independent Study project (or "IS" as it is affectionately known). My IS advisor was a serious theatre director who thought Simon's plays were formulaic and lacked depth. She had thrown down the gauntlet!



I proposed directing Simon's darker and lesser-known play *The Gingerbread Lady* as my senior project along with a 50-page paper about the works of Neil Simon and a daily journal of my rehearsal process. I was captivated by the lead character, Evy Mears, a cabaret singer and recovering alcoholic rebuilding relationships with family and friends. The role won Maureen Stapleton a Tony Award and my production earned me honors on my Senior IS.

Now, forty years later, I am so excited to revisit Neil Simon's humor and heart as we bring his romantic comedy *Barefoot in the Park* to the stage. As with the trilogy, *Barefoot* is semi-autobiographical, drawing on his marriage to his first wife, Joan Baim, as young newlyweds. For those who are as deeply versed in Simon's plays as I am, you will know that *Barefoot* is followed up with *Chapter Two* about his second marriage to actress Marsha Mason.

We are very pleased to welcome back director Rachel Alderman to offer a funny, deeply human new production of the now classic comedy, as she draws on her lived experience growing up as a Jewish New Yorker. She has been in conversation with Artistic Director Elizabeth Williamson about this project for years, and this is the perfect season to program Rachel's production of *Barefoot*, in keeping with the season's theme of coming home.

We have a whole host of sponsors to thank for making this production possible: Season Sponsor ESL Federal Credit Union, Honorary Producer Dr. Dawn Lipson, Lead Producer St. Johns Living & Care, Media Sponsors iHeart Media and 13WHAM, Opening Night Sponsor Canandaigua National Bank, Official Storage Sponsor Buckingham Properties, and our Official Vehicle Sponsor Vision Automotive Group.

**We all need a romantic comedy about now.
Enjoy *Barefoot in the Park*.**

James Haskins
Executive Director



PRODUCTION CREDITS



ELIZABETH WILLIAMSON
Artistic Director

JAMES HASKINS
Executive Director

Presents

BAREFOOT IN THE PARK

By **NEIL SIMON**

Directed by **RACHEL ALDERMAN†**

Scenic Design
CHRISTOPHER SWADER
& **JUSTIN SWADER†**

Costume Design
HERIN KAPUTKIN†

Lighting Design
AJA M JACKSON†

Sound Design
FREDERICK KENNEDY†

Wig, Hair, & Makeup Design
RACHAEL GEIER

Intimacy Choreographer
ERICA MURPHY

Casting Director
CALLERI JENSEN
DAVIS

Production Stage Manager
KEVIN GREGORY
DWYER*

Assistant Stage Manager
SHANNON TOOT*

Production Manager
JOSEPH BIAGINI

General Manager
THALIA SCHRAMM

ACKNOWLEDGEMENTS

Barefoot in the Park is presented by arrangement with Concord Theatricals on behalf of Samuel French, Inc. www.concordtheatricals.com



Geva is a proud partner of  in the Geva-Brockport Alliance.

A Spanish-language version of this program is available at the Box Office and online at GevaTheatre.org.
Translator: Marisol Galarza-Ruiz.

PRODUCTION CREDITS

THE CAST

(In order of appearance)

Corie Bratter	Lee Harrington*
Telephone Repair Man/Delivery Man	Joe Osheroff*
Paul Bratter	Sean-Michael Wilkinson*
Ethel Banks	Alison Cimet*
Victor Velasco	Evan Zes*

UNDERSTUDIES

Understudy Paul Bratter	Connor McGuire
Understudy Victor Velasco/Telephone/Delivery Man	Paul Moukperian
Understudy Ethel Banks/Corie Bratter	Bridget Welch

APPROXIMATE RUN TIME

2 hours, 15 minutes, including one 15-minute intermission between Act I and II,
and a brief 1-minute pause between Act II and III.

SETTING

The top floor of a brownstone in Greenwich Village, New York City.

ADDITIONAL PRODUCTION CREDITS

Substitute Stage Manager	Kate Duprey
Sign Interpretation Coordinator	Luane Davis Haggerty, Ph.D
Director of Artistic Sign Language	Patrick Graybill
Sign Interpreters	Madison Halker, Be'anni Hogan
Open Captioner	Samantha Geffen
Audio Descriptor Program Coordinator and Consultant	Rene Latorre
Audio Descriptor	Dave Baxter
Directing Observer	Sean Britton-Milligan
Overhire Properties/Overhire Run Crew	Isabella Smith
Overhire Wardrobe/Wig Crew	Madeleine Winter
Stage Management Intern	Lindsay Reed

AFFILIATIONS



* Members of Actors' Equity Association, the Union of Professional Actors and Stage Managers in the United States.



‡ Indicates members of the Stage Directors and Choreographers Society, an independent national labor union.



† The scenic, costume, lighting and sound designers in LORT Theatres are represented by the United Scenic Artists, Local USA-829 of the IATSE.



Geva Theatre operates under agreements between the League of Resident Theatres (LORT), a consortium of regional theatres throughout the nation; Actors Equity Association (AEA), the union of professional actors and stage managers in the United States; the Stage Directors and Choreographers Society (SDC), an independent national labor union; and United Scenic Artists (USA), a union of scenic, costume, lighting and sound designers.



Geva Theatre is a member of Theatre Communications Group (TCG), the national service organization for the American Theatre.



Open captioning services provided, in part, by a grant from NYSCA & TDF'S TAP+ program.



Please note that the taking of photographs or use of recording devices during the performance is not permitted. Cell phones and all other electronic devices are strictly prohibited in the theatre.

STUDENT MATINEE SERIES

Teachers: Bring your students to an exceptional, professional school-day performance; we'll make it easy, enriching, and fun. When you make a Student Matinee reservation, you're buying more than a ticket; you're choosing a complete educational journey for your students.



Every Student Matinee reservation includes:

- A teacher preview ticket
- A Discovery Guide (available in both English and Spanish) curated by Geva artist-educators, packed with information about the play, relevant context, suggested discussion questions, and related activities
- A post-show talkback with members of the cast

The Passport Program provides free tickets to RCSD groups and charter schools within the city limits of Rochester. Passport tickets are limited and available on a first come, first served basis.

Visit www.gevatheatre.org/education/ for complete details!

"I find that teaching hard subjects is made easier by coming to it through the arts first. The Discovery guide was incredible. We used it, almost in its entirety. It provided the perfect background information to discuss and prepare them for what they would see. Geva does a phenomenal job of helping to convey the emotional and intellectual accessibility and stimulation of Geva's productions for young people."



"My students were mesmerized and blown away! They are still talking about it days later - particularly the use of movement in storytelling."

"We are a social justice school and having opportunities to bring our students to Geva's shows fits with our mission. Some of our students have been to a live theater production. At the talkback with the cast, the first three hands raised were from my school! This was an invaluable experience."



Geva Theatre's Student Matinees are supported by: William & Sheila Konar Foundation, ESL Charitable Foundation, Daisy Marquis Jones Foundation, Donald F. & Maxine B. Davison Foundation, Rubens Family Foundation, Joseph & Irene Skalny Charitable Trust, Guido & Ellen Palma Foundation, Robert and Susan Touhsaent, Richard & Joan Fenton, Elizabeth Rennert, Cornell/Weinstein Family Foundation, Dr. Tomás C. Hernandez & Dr. Keith S. Reas, and Kathleen and Alfred Laitenberg.

Theatre *ROCS*.org

The PAGE for STAGE



The Grown-Ups
January 29–February 8
Blackfriars Theatre



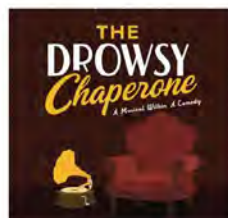
Hello Dolly!
January 29–February 15
OFC Creations Theatre Center



**Frankie and Johnny
in the Clair de Lune**
February 6–14
Out of Pocket



Hitmakers: Rewind
February 7–22
CenterStage Theatre



The Drowsy Chaperone
February 13–15
Gatesinger Company, Ltd.



Barefoot in the Park
February 24–March 29
Geva Theatre



One Act Play Festival
February 27–March 1
Batavia Players



The Cherry Orchard
March 5–14
The Classics Company



Julius Ceasar
March 6–22
The Company Theatre

Theatre *ROCS* Member Organizations

Batavia Players
Blackfriars Theatre
Bristol Valley Theater
CenterStage at the JCC
The Classics Company
The Company Theatre
Gatesinger Company, Ltd.

Geva Theatre
Kalidas Theater
OFC Creations Theatre Center
The Open Road Theatre
Out of Pocket
Penfield Players
PUSH Physical Theatre



@TheatreROCS

RAPA
Rochester Community Players
Rochester Latino Theatre Company
Theatre444
TYKES (Theatre Young Kids Enjoy)
Unleashed! IMPROV
Webster Theatre Guild

Interview with Director Rachel Alderman

By Olivia Spenard

Olivia Spenard: What first drew you to *Barefoot in the Park*?

Rachel Alderman: I have been in love with Neil Simon since I overheard my parents watching *Brighton Beach Memoirs* on TV in the late 80s. I overheard the dialogue and, just from the rhythm of it, was drawn into the TV room, and was like, "What is that? And why does it sound like my family?" So from the jump, there was a connection – a kind of familial feeling even before I understood why he culturally resonated with me. Then in middle school or high school, I saw the movie *Barefoot in the Park* with Robert Redford and Jane Fonda and just fell head over heels in love with the wit, the dialogue, the relationship, those actors, the romantic comedy.

OS: Do you have a history with Neil Simon's work?

RA: The first community theater non-musical that I was ever in was *Brighton Beach Memoirs*. I was 12. The first Simon that I ever saw on Broadway was his Pulitzer prize-winning *Lost in Yonkers* featuring the incredible Jane Kaczmarek as Bella. Then in 2022, a good 30 years later, dreams came true when I co-directed *Lost in Yonkers* with Marsha Mason at Hartford Stage. She also starred in our production as the Grandmother. Marsha was married to Neil Simon, his second wife, and their creative collaboration led to wonderful work that is beloved by so many. Working with Marsha on Simon's text was a thrilling way to enter into his canon of work. I'm so grateful to her.



Brothers Eugene and Stanley in Neil Simon's 1986 film adaptation of *Brighton Beach Memoirs*.

OS: What do you find compelling about Simon's approach to comedy and storytelling?

RA: All of Simon's work is grounded in real, true, intimate moments – human moments. Then he layers in the wit, rhythm and pace that makes him exceptionally unique. He thinks faster than most people, so his characters also operate with rapid-fire energy that lifts all of the actions off the page. As a 9 year old hearing Simon for the first time, I loved the high-speed train ride of his comedy. As an adult, I recognize the heart and pain in the journey, while still enjoying the velocity. The pairing of those things is part of why he is brilliant.

OS: To what degree is this play autobiographical – how much did Simon base it on his own life?

RA: Simon pulls from his own life often in all of his work. This play happens to be inspired by his marriage to his first wife Joan. They were married in 1953, had two daughters and she passed away way too young from cancer in 1973. He describes in his autobiography, *Memoirs*, that they were married in lower Manhattan and then that same day moved into an apartment on Tenth Street between Fifth Avenue and University Place, not far from Washington Square Park. He describes the impulses

for this play: the 5th floor walk-up, the leaky skylight, the tub-less bathroom, all of it. He writes, "Joan was gloriously happy up in our tree house on Tenth Street. I was gloriously happy with Joan, although not quite as stoic. I would announce with a touch of sarcasm as we squirmed into our miniature bed, "We'll be sleeping from left to right tonight. (16)" Truth in fiction.

OS: Are there elements of your own life that you see reflected in the play or are exploring in your production?

RA: When I first started exploring this play, I immediately thought about my mom and what it meant for her to emerge from the safe bubble of her childhood home and step into the untethered world of adulthood. My mom, though not as impulsive as Cori, yearned for an expansion of her bubble and was drawn to actors, theatre, musicians, while her parents encouraged her to be practical, find a lawyer or a doctor to marry, basically "color within the lines." Cori is thrilled by the possibilities of what life can bring now that she is out in the world and creating her own home. I think of my mom navigating those choices as a young woman from a similar cultural and economic background as Cori. And, now that I'm in my late 40s, I also find myself compassionately aligned with Ethel and Victor. Expanding my comfort zone and wrestling with who I am doesn't stop at 25. I see this in my mom, too, who is now in her 70s. Cori's enthusiasm and *joie de vivre* affect the whole family and everyone in the apartment must wrestle with who they are and ask themselves who they want to be. What are they game to try, what is their tolerance for risk, no matter their age or assumptions about their age? What will be gained in the process of pushing beyond your comfort zone?

OS: How did you approach the staging of the small apartment space and the physical comedy to enhance the story?

RA: The Swaders, our set designers, and I really wanted to honor the Simons' apartment in all its quirky glory – honor the real apartment on Tenth street and the original production's apartment when the show opened in 1963. They have designed a wonderful playground that places fun restrictions on us. The more restrictions, the more fun playing within the limited space and finding all the comedic ways it creates obstacles for our characters.

OS: What does being a director mean to you?

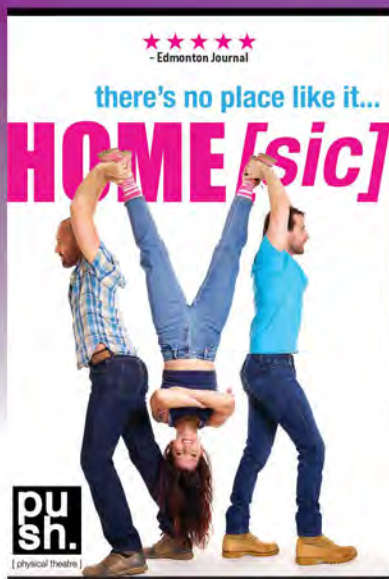
RA: I love collaboration. I love creating worlds with people – designers, actors, crew and audience. Bringing stories to life on stage is thrilling. When you direct a play, you dive in deep and immerse yourself in whole worlds. I find that it's the fastest way to create community.

OS: Is there one thing you hope people leave the theater laughing about?

RA: I think right now is the perfect time to lift up a story about LOVE. This is one of the greatest romantic comedies – underneath all the conflict is love and love sees them through all their hardships. I hope people see themselves in these human relationships on stage and can laugh at themselves while they embrace the chaos of Cori, Paul, Ethel, Victor and the poor Telephone Repair man who keeps getting sucked back into this apartment. Go run barefoot in the park. Do something delightfully impulsive that gets you out of your comfort zone and then try to hold on to that spirit for as long as you can when reality sets back in...and then go do it again!

SPECIAL PROGRAMMING

Extraordinary Performances You Won't Forget



MARCH 13 - 21

2026 | FIELDING STAGE

Through a spectacular fusion of movement, illusion, and dynamic physicality, *HOME[sic]* unpacks the fragile, shifting nature of home.

Tickets are \$39, or \$34 for Geva Subscribers (includes fees).



JUNE 25 - 27

2026 | FIELDING STAGE

An intimate solo cabaret with Olivia Hernandez celebrating the simple little things that make life worth living.

Tickets are \$45, or \$40 for Geva Subscribers (includes fees).

Stay in the know with upcoming shows and special events. Scan the QR code to subscribe to Geva's newsletter.



SUMMER CONCERTS

Where Summer Comes to Life on Stage



JULY 9 - 19

2026 | WILSON STAGE

Celebrate the King of Rock 'n Roll with internationally acclaimed touring star Brandon Bennett.



JULY 23 - AUGUST 2

2026 | WILSON STAGE

Backed by a dynamite band, Ingersoll delivers virtuosic vocals, passionate storytelling, humor, and heart.

Ticket Prices start at \$28 (includes fees).

DOUBLE THE FUN

Purchase both summer concerts and save!*

*Geva Subscribers save 10% when purchasing one show OR 20% when purchasing both shows together. Not a subscriber? You can still save 10% when you buy both shows at the same time. All discounts are automatically applied at checkout using your patron account at GevaTheatre.org, or call our Box Office at 585-232-4382 to purchase.



SUNY BROCKPORT
FINE ARTS
SERIES

A TheatreBrockport Production

SKELETON CREW

by Dominique Morisseau

March 5-8, 2026

Thursday, Friday, Saturday Evenings at 7:30pm
Saturday & Sunday Matinees at 2pm

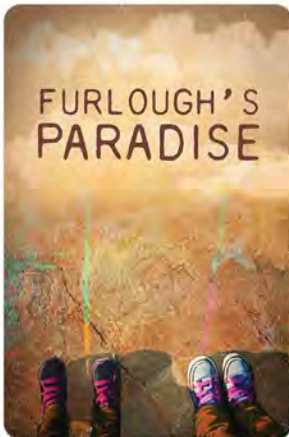
Tower Fine Arts Center Black Box Theatre



Purchase Tickets:
FineArtsTix.brockport.edu



UP NEXT ON GEVA'S WILSON STAGE



FURLOUGH'S
PARADISE

APR 14 - MAY 10

Furlough's Paradise

Grief, Grace, and a Goodbye

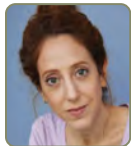
Winner of the 2025 Susan Smith Blackburn Prize and Winner of the 20th Annual Alliance/Kendeda National Graduate Playwriting Competition. On a three-day furlough for her mother's funeral, Sade stays with her only cousin. Mina is also on a brief reprieve from her life on the West Coast, and the cousins, who were once so close, come together to try to make sense of grief, home, and kinship as time ticks toward Sade's return to prison. "An abolition play or simply a play about cousins" from one of America's most promising new playwrights.

**LEARN
MORE**



CAST

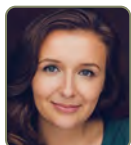
ALISON CIMMET (*Ethel Banks*) (she/her)



Broadway: *Gary, Amelie; She Loves Me; The Mystery of Edwin Drood; Bonnie & Clyde; Baby, It's You!*; *A Tale of Two Cities*. Off-Broadway/Regional favorites: Margo Jones in *Kowalski* (Duke); Nelle

in *Someone Spectacular* (Signature); Lady Capulet in *Romeo & Juliet* (Westport Country Playhouse); Witch in *Into the Woods* (Fiasco/The Old Globe); Mrs. Cratchit in *A Christmas Carol* (McCarter Theatre); Madame Thenardier in *Les Miserables* (NCT); *3 Kinds of Exile* (Atlantic Theatre); *Preparedness* (Bushwick Starr); *My Wonderful Day* (Two River Theatre); *Party Face* (City Center). Film/TV favorites: *Best Medicine*, *The Wrath of Becky*, *The Big Sick*, *The Marvelous Mrs. Maisel*, *Ray Donovan*, *Blacklist*, *Younger*, *Bull*, *Evil*, *Dickinson*, *Law & Order: SVU*. Brown University graduate, founder of Bonfire Theatre Group, and member of The Actors Center. More at @AllisonCimmet on instagram or AllisonCimmet.com.

LEE HARRINGTON (*Corie Bratter*) (she/her)



is just thrilled to be back in Rochester with this gem of a play. She was last seen at Geva as Cynthia Weil in *Beautiful: The Carole King Musical*. NY theatre: *Into the Woods* (Roundabout),

A Man of No Importance (CSC), *Assassins* (CSC), *Jellybean* (Irondale Ensemble Project). Selected Regional: *Crumbs from the Table of Joy* (Crossroads Theatre Company), *She Loves Me* (Gulfshore Playhouse), *A Christmas Story* (Lexington Theatre Company), *Hi, My Name is Ben* (Goodspeed), *Connecticut Christmas Carol* (Goodspeed), *Show Boat* (Westchester), *Company* (Pittsburgh Public), *Merrily We Roll Along* (Cincinnati Playhouse), *Man of La Mancha* (Shakespeare Theatre). Film: *Where'd You Go, Bernadette*, *Last Flag Flying*. TV: *Gone*. Love to my extraordinary friends and family, honey and DGRW. Education: Carnegie Mellon University. Proud Tartan! Insta: elaharrington.

JOE OSHEROFF (*Telephone Repair Man/Delivery Man*) (he/him)



is excited to make his Geva debut! He was last seen understudying and performing the role of Herbie in the 2025 Broadway revival of *Gypsy*. Other theatrical credits

include: *War Horse* (Broadway National Tour), *Plays For The Plague Year* (The Public Theater), *The Far Country* (Yale Repertory Theater), *Molly's Hammer* (Repertory Theater of St. Louis), *Proof/ The Other Place/ The Drawer Boy* (Weston Playhouse), *The Merchant of Venice* and *War of the Roses* (Utah Shakespeare Festival), *As You Like It* (The Acting Company), *Two Rooms* (Roust Theater Company), *The Caucasian Chalk Circle* (Mettawee River Theater Company). TV: *Law and Order*, *Criminal Intent*, *Law and Order SVU*, *Quantico*, *The Blacklist*, *Blue Bloods*, *East New York*, as well as various commercials and voiceovers. Thanks to Roger Paul, Inc. Big love to KLC and Sweetpea!

SEAN-MICHAEL WILKINSON (*Paul Bratter*)



(he/him) Off-Broadway: *Dracula*, *A Comedy of Terrors* (New World Stages); *Fringe Deaths* (St. Luke's Theatre). Regional: *Mary Shelley's Frankenstein* (Shakespeare Theatre of NJ); *And Then There Were None*

(Florida Rep.); *A Midsummer Night's Dream*, *The Merchant of Venice* (The Old Globe). TV/ Film: *American Horror Story* (FX); *Succession* (HBO); *The Gilded Age* (HBO); *Law & Order: SVU* (NBC); *FBI* (CBS); *Blue Bloods* (CBS). MFA: The Old Globe/University of San Diego. Many thanks and love to family and Julia for their support. Instagram: @seantillius

EVAN ZES (*Victor Velasco*) BROADWAY:



The Kite Runner. NATIONAL TOUR: *Clue*; OFF BROADWAY: *Incident at Vichy* at The Signature Theatre; *Rent Control* (writer/performer) at Soho Playhouse; *Arms and The Man* at Gingold; *Days to Come* at The Mint Theatre

Company; *London Assurance*, *Freedom of the City*, *Man and Superman*, *White Woman Street*, *Around the World in 80 Days* at Irish Repertory Theatre; *American Dreams* with The Acting

WHO'S WHO

Company. INTERNATIONAL: *Rent Control* at Elliniko Theatre in Athens, *Greece* and *Teatro Jaco* in Costa Rica; Julie Taymor's *The King Stag* at the Barbican, London. REGIONAL: Paper Mill, Hartford Stage, The McCarter, The Alley, The Goodman, The Old Globe, Pittsburgh CLO, A.R.T., New York Stage and Film, Cleveland Playhouse, Westport Country Playhouse, La Jolla Playhouse, Arena Stage, Cincinnati Playhouse, The Shakespeare Theatre DC, TV: *Only Murders in the Building*, *The Blacklist*, *FBI Most Wanted*, *The Path*.

CONNOR MCGUIRE (u/s Paul Bratter) (he/



him) is excited to make his debut with Geva Theatre! As a Rochester based performing artist, some of Connor's recent credits include *An American in Paris* (JCC CenterStage), *The Light in the Piazza* (Blackfriars Theatre), *Do You Feel Anger?* (Blackfriars Theatre) and *Less Miserable: An Improbable New Guilbert and Sullivan Musical* (Off-Monroe Players). Up next in May 2026, Connor will appear in the cast of *Three Sisters* (The Classics Company). Connor has a PhD in Toxicology and pursues a career in dietary supplement safety. Many thanks and love to all his family, friends and mentors for their support on this journey! Instagram: @cmcguire15

PAUL MOUKPERIAN (u/s Victor Velasco & Telephone/Delivery Man)



(he/him) is thrilled to make his Geva debut. Regional: *Rumors* (Ken) and *The Noteworthy Life of Howard Barnes* (Fitz) at Blackfriars Theatre. Select: *Night of the Living Dead Live!*

(Chief McClelland), *Forever Plaid* (Sparky), *Comedy of Errors* (Antipholus of Syracuse), *A Christmas Carol* (Fred), and *Romeo & Juliet* (Romeo). Thanks to Crista, Ian, and the audiences who make it all worthwhile. @inventfilm

BRIDGET WELCH (u/s Ethel Banks/Corie Bratter) (she/her) is honored



to return to Geva for the first time since her high school StageDoor experience with *The Diary of Anne Frank*. A Denison University grad (2022), Bridget studied English, theatre, and served

as president of the nation's oldest collegiate

improv troupe. This inspired her semester "abroad" at The Second City in Chicago and classes at Upright Citizens Brigade in NYC post-grad. Locally, Bridget has performed in many shows at Blackfriars Theatre. She recently workshoped a new musical, *Desperation*, off-Broadway with The York Theatre Co. in NYC and debuted an original musical, *The BFF Notebook*, at the Rochester Fringe Festival with her childhood best friend.

CREATIVE & ARTISTIC TEAM

NEIL SIMON (Playwright)

American playwright and screenwriter Neil Simon (1927-2018) is widely regarded as one of the most successful, prolific and performed playwrights in theatre history. In addition to *Lost In Yonkers*, which won a Tony Award and Pulitzer Prize, his plays and musicals include *Come Blow Your Horn*, *Little Me*, *Barefoot in the Park*, *The Odd Couple*, *Sweet Charity*, *The Star-Spangled Girl*, *Plaza Suite*, *Promises, Promises*, *Last of the Red Hot Lovers*, *The Gingerbread Lady*, *The Prisoner of Second Avenue*, *The Sunshine Boys*, *The Good Doctor*, *God's Favorite*, *California Suite*, *Chapter Two*, *They're Playing Our Song*, *I Ought to be in Pictures*, *Fools*, *Brighton Beach Memoirs*, *Biloxi Blues*, *The Odd Couple* (female version), *Broadway Bound*, *Rumors*, *Jake's Women*, *The Goodbye Girl*, *Laughter on the 23rd Floor*, *London Suite*, *Proposals*, *Hotel Suite*, *The Dinner Party*, *45 Seconds from Broadway*, *Oscar and Felix*, and *Rose's Dilemma*. In addition to the film adaptations he wrote of many of his plays, his screenplay credits include *After the Fox*, *The Out-Of-Towners*, *The Heartbreak Kid* (original 1973 version), *Murder by Death*, *The Cheap Detective*, *Seems Like Old Times*, *Only When I Laugh*, *Max Dugan Returns*, *The Slugger's Wife*, *The Marrying Man* and *The Odd Couple II*. Other motion pictures based on stage plays include *Come Blow Your Horn*, *Sweet Charity* and *The Star-Spangled Girl*. For television, Mr. Simon wrote series, teleplays and motion pictures, including *The Tallulah Bankhead Show*, *The Sid Caesar Show*, *The Phil Silvers Arrow Show*, *The Phil Silvers Show*, *The Garry Moore Show*, *The Trouble with People*, ABC's *Broadway Bound* and *Jake's Women*. Books by Neil Simon include *Rewrites*, *A Memoir*, *The Play Goes On*, four omnibus collections

of Neil Simon's plays (*The Comedy Of Neil Simon, The Collected Plays Of Neil Simon, Vol. II, The Collected Plays Of Neil Simon, Vol. 3, The Collected Plays Of Neil Simon, Vol. 4*) and *Lost In Yonkers* (screenplay). Mr. Simon received more Academy and Tony nominations than any other writer. Awards he received include the Pulitzer Prize for *Lost In Yonkers*, Emmy Awards for *The Sid Caesar Show* and *The Phil Silvers Show*, Tony Awards for *The Odd Couple*, *Biloxi Blues*, *Lost In Yonkers* and a special Tony Award For Overall Contribution To The Theatre. His nominations include Tony Award Nominations for *Little Me*, *Barefoot in the Park*, *Plaza Suite*, *Promises, Promises*, *The Last of the Red Hot Lovers*, *Brighton Beach Memoirs*, *Broadway Bound*, *Lost in Yonkers* and *The Goodbye Girl* (musical). Other nominations include a Writers Guild Screen Award for *The Odd Couple* and *The Out-Of-Towners*, a Writers Guild Laurel Award, an American Comedy Award for Lifetime Achievement and a Writers Guild Screen Award Nomination for *Barefoot in the Park*, as well as an Oscar Nomination for *The Odd Couple*, an Evening Standard Award, a Sam S. Shubert Foundation Award, Kennedy Center Honors, a UCLA Medal, a Peggy V. Helmerich Distinguished Author Award and a William Inge Theater Festival Award for Distinguished Achievement in the American Theater.

RACHEL ALDERMAN (Director) (she/her) is a director, producer and co-creator of theater experiences - fiercely committed to building ensemble onstage and off. Rachel has held senior leadership positions at Long Wharf Theatre and Hartford Stage, and she is a founding ensemble member of the award-winning A Broken Umbrella Theatre with whom she has collectively devised original, site-specific theater inspired by the history of New Haven, CT. Last season, she directed Geva Theatre's *Little Women* and is honored to be back in Rochester. Other recent work includes: *Dial M for Murder* (Geva and Dallas Theater Center), *Lost in Yonkers* (co-directed and starring Marsha Mason), *It's A Wonderful Life: A Live Radio Play* (co-directed with Melia Bensussen), and *Cry It Out*. Rachel will devise/direct *Revolutionary Era* New Haven, Broken Umbrella's next project. Love to Ian, Jonah and Izzy.

CHRISTOPHER SWADER & JUSTIN SWADER (Scenic Design) (he/him & he/him) Geva:

The Play That Goes Wrong, *Little Women*, *Dial M for Murder*. Regional credits include designs at: The Old Globe, Hartford Stage, Children's Theatre Company, Goodspeed Musicals, Signature Theatre, Dallas Theater Center, Indiana Repertory Theatre, George Street Playhouse, Two River Theatre, Alabama Shakespeare Festival, Everyman Theatre, People's Light, Miami New Drama, Resident Ensemble Players at UD, Dorset Theatre Festival, and Weston Theater Company. NYC: Primary Stages, Red Bull Theater, Fiasco Theater, Tectonic Theater Project, Mint Theater, The New Victory Theatre, Classical Theatre of Harlem, York Theatre Company, Penguin Rep, Mason Holdings. cjswaderdesign.com

HERIN KAPUTKIN (Costume Design) (she/her) is thrilled to be back for her second production with Geva Theatre! Credits include: *The Frogs* (The Juilliard School); *The Great Emu War* (The Goodspeed Opera House); *A Distinct Society* (Weston Theater Company); *The Comedy of Errors* (Hudson Valley Shakespeare); *Little Women* (Geva Theater); *Prelude to a Kiss* (Co-Design with Linda Cho, Milwaukee Rep); *Twelfth Night* (Shakespeare on the Vine); *Dido and Aeneas* (Yale Baroque Opera Company); *The Caucasian Chalk Circle* (The Juilliard School); *Babes in Arms* (Quinnipiac University); *A Midsummer's Night Dream* (Fordham University); *FunHome* (TheaterWorks Hartford); *Christmas in Connecticut* (Goodspeed Musicals); *American Son* (TheaterWorks Hartford); *El Huracan* (Yale Repertory Theater); Herin holds an MFA in Costume Design from The Yale School of Drama. herinkaputkindesign.com

AJA M JACKSON (Lighting Design) (she/her) is thrilled to return to Geva Theatre! At Geva: *Little Women*. Broadway: *Fat Ham**, *Lempicka**, *John Proctor is the Villain**, and *The Queen of Versailles**. Off-Broadway: *Goddess**, *A Commercial Jingle for Regina Comet*, *Rock and Roll Man*, and *Monsoon Wedding**. Tour: *Hadestown* (2nd National). Commercial: *Goddess** (Berkeley Rep), *Real Women Have Curves** (ART), and *Queen of Versailles** (Colonial Theatre). Regional: American Repertory Theatre; The Huntington Theatre Company; Hartford Stage Company; The Alley Theatre; The Everyman Theatre; Shakespeare and Company; *World Goes Round* (Olney Theatre). Dance: *Modern Connections*;

WHO'S WHO

Hold Tight, *Ailey 2*, and *Hubbard Street Dance Chicago*. Industrials: Microsoft, Starbucks (Yeager Design). Awards: OEAA Outstanding Lighting Design for *Kinky Boots*. *Associate/Assistant. Proud member of USA 829.

FREDERICK KENNEDY (Sound Design) (he/him) is a Canadian-American sound designer, musician, and composer. Recent projects of interest include *Memnon*, *A Midsummer Night's Dream*, and *Twelfth Night* (Classical Theatre of Harlem), *Seared* (Alley Theatre), *Primary Trust* (Signature Theatre), *It's a Wonderful Life*, *A Live Radio Play* (Hartford Stage), *The Folks at Home* (Baltimore Center Stage), *Kisses Through the Glass* (audio play for Two River Theater), *The Forbidden City* (audio play for Lincoln Center Theatre), *Native Son* (Acting Company), and *Father Comes Home from the Wars, Parts 1, 2 and 3* (Yale Repertory Theatre). In addition, he has worked for more than two decades as a jazz drummer, appearing on dozens of recordings and touring throughout North America and Europe. Faculty, University of Minnesota, Theatre Arts & Dance; member United Scenic Artists, Local 829; MFA, Yale School of Drama. fredkennedy.org

RACHAEL GEIER (Wig, Hair, & Makeup Design) (she/her) Broadway: *The Great Gatsby* (production won the MUAH Award). Off-Broadway/Regional: A.R.T. - *Wonder* (Makeup and Wig/Hair designer), La Jolla Playhouse - *Working Girl* (Makeup Designer), and Paper Mill Playhouse - *Benny & Joon*. Film/TV: contributed wigs for *Russian Doll* (Season 2), *The Good Nurse*, *Poker Face*, *Awkwafina Is Nora from Queens* (Season 1), *Somebody Somewhere* (Season 2), *Mothers' Instinct*, and *The Savant* (coming soon). Juilliard Wig and Makeup Apprentice, 2014.

ERICA MURPHY (Intimacy Choreographer) (she/her) is an actor, director, educator, and movement specialist. She has performed in world premieres in Chicago, Paris, NYC, and Canada, and created multiple award-winning productions through PortFringe. Recent performances include *The Play That Goes Wrong* (Portland Stage), *Death Wings Project* (Dramatic Repertory Company and The Theater Project), and *Ballooney* (The Children's Museum & Theatre of Maine). She studies with Theatrical Intimacy Education, and she has provided movement and intimacy choreography for productions with Syracuse

Stage, Geva Theatre, Redhouse Arts Center, Portland Stage, Syracuse University, and others. Murphy is a certified Feldenkrais practitioner, and a graduate of The Theatre School at DePaul University and the Jacques Lecoq International School of Theater in Paris. She has previously taught theater at Brandeis University and the University of Southern Maine, and is currently an Assistant Professor at Syracuse University.

CALLERI JENSEN DAVIS (Casting) is the collaborative casting partnership of James Calleri, Erica Jensen, and Paul Davis. Broadway credits include Tony-winning *Purpose*, *Topdog/Underdog*, *The Piano Lesson*, *For Colored Girls...*, *Thoughts of a Colored Man*, *Burn This*, *Fool for Love*, *Venus in Fur*, *Hedwig & The Angry Inch*, *The Elephant Man*, *Of Mice and Men*, *33 Variations*, *A Raisin in the Sun*, *Chicago*, *The Dead*. Select TV credits include: *Love Life*, *Dickinson*, *The Path*, *Lipstick Jungle*. callerijsendavis.com

KEVIN GREGORY DWYER (Production Stage Manager) (he/him) Previous Geva favorites: *The Play That Goes Wrong*, *Always...* Patsy Cline, *Beautiful: The Carole King Musical*, *Pure Native*, *August Wilson's How I Learned What I Learned*, *Lady Day at Emerson's Bar and Grill*, and *FRIDA...A Self Portrait*. Regional highlights: *Bandstand*, *Jersey Boys*, *A Chorus Line*, and *EVITA* (The REV Theatre Co). National Tours: *The Book of Mormon*. Chicago: *An American in Paris*, *Disney and Cameron Macintosh's Mary Poppins*, *The Color Purple*, *Mamma Mia!*, *Disney's Beauty and the Beast*, and *Little Shop of Horrors* (Drury Lane Theatre); *Macbeth*, *Q Brothers Christmas Carol*, *King Charles III*, and *Othello* (Chicago Shakespeare Theater); *This Is Our Youth* and *Lord of the Flies* (Steppenwolf Theatre Company). Proud AEA Member and Emerson College Alum.

SHANNON TOOT (Assistant Stage Manager) (she/her) Geva SM credits: *A Christmas Carol*, *Airness*, *Little Women*, *The Wizard of Oz*, *Yoga Play*, *Young Frankenstein*. Other SM credits include *Sanctuary City* (Geva co-production with The Kitchen Theatre), *Ragtime: The Musical* (Hangar Theatre), *Spring Awakening*, and *The Seagull* (The Company Theatre). Favorite acting credits include *Avenue Q* (Kate Monster), *Urinetown* (Hope Cladwell), and *Almost*,

Maine (Sandrine, Marvalyn, Marci, Rhonda) at SUNY Brockport. Proud member of AEA. Much love to my family!

KATE DUPREY (*Substitute Stage Manager*) (she/her) is delighted to be back backstage at Geva. Past credits with Geva include *The Color Purple*, *Lady Day at Emerson's Bar & Grill*, *Constellations*, *Cry It Out* (ASM), *Vietgone*, and *A Christmas Carol* (Run Crew). As a local Stage Manager in the Rochester area, some favorite credits include *Romeo & Juliet*, *The Seagull*, and *Richard II* (The Company Theatre), *The Duchess of Malfi*, and *The Complete Works of William Shakespeare, Abridged* (WallByrd), and *Into the Woods* and *The Drowsy Chaperone* (Geneva Theatre Guild). Currently, she is teaching a class in Stage Management at the University of Rochester. As always, thank you to my family, and my husband for their amazing support.

STAFF LEADERSHIP

ELIZABETH WILLIAMSON (*Artistic Director*)



(she/her) joined Geva as Artistic Director in 2022, to launch the theatre's 50th Anniversary Season. An Obie Award-winning director, Williamson is known internationally for her work as a dramaturg, director, adapter, and producer. Broadway: Matthew López' *The Inheritance* (Tony, Olivier, Critics Circle, Evening Standard, GLAAD, and Drama Desk Awards for Best Play, Outer Critics Circle Honoree), *A Gentleman's Guide to Love and Murder* (Tony Award for Best Musical), *Anastasia*. West End: *The Inheritance*. Off-Broadway: Sarah Gancher's *Russian Troll Farm*, Dan O'Brien's *The Body of an American*. Regional: About Face Theatre, ACT, the Alley, Cal Shakes, Court, Hartford Stage, the La Jolla Playhouse, Oregon Shakespeare Festival, Pioneer Theatre, Steppenwolf, Theatre de La Jeune Lune, TheaterWorks Hartford, TheatreSquared, the Westport Country Playhouse, Williamstown Theatre Festival. Williamson previously served as Associate Artistic Director and Literary Manager at Pioneer Theatre Company in Salt Lake City and as Associate Artistic Director and Director of New Play Development at Hartford Stage. She received a 2007 NEA

Fellowship in Literary Translation and is a member of SDC and LMDA. Education: M.St., Oxford University; B.A., Bennington College; trained at the École Internationale de Théâtre Jacques Lecoq.

JAMES HASKINS (*Executive Director*) (he/



him) is honored to serve as Geva Theatre's Executive Director alongside Artistic Director Elizabeth Williamson, and Geva's Board and staff. Prior to coming to Geva, James served as Managing

Director of the Guthrie Theater in Minneapolis after having completed a twelve-year tenure as Managing Director of The Wilma Theater in Philadelphia in partnership with Artistic Director Blanka Zizka. James began his work in theater administration at Circle Repertory Company and went on to work with a variety of theaters in New York and Seattle, most notably the Seattle Group Theatre. Upon moving to Philadelphia, he first worked as Managing Director of InterAct Theatre Company, while also serving on the Board of the Theatre Alliance of Greater Philadelphia as Chair of the Barrymore Awards Oversight Committee. He subsequently moved into the Executive Director position of the Theatre Alliance before joining the Wilma. As a theater artist, James acted in many productions before turning to theater administration and is most proud of his directorial and dramaturgical work on the plays of his husband Michael Whistler. James holds an MFA from the University of Washington and a BA from The College of Wooster in Ohio, where he previously served on the alumni board. Following the pandemic shutdown, James joined committees of the Minnesota Arts and Culture Coalition and the Professional Non-profit Theatre Coalition to help build support and funding for arts and culture. In Philadelphia, he served on the Cultural Advisory Committee under former Mayor Michael Nutter, who officiated his wedding ceremony. James is a member of the City of Rochester's Arts and Creative Community Committee (AC³) and serves on the Board of the Rochester Downtown Development Corporation.

SAVE THE DATE!

ENCORE

THE 25/26 SEASON SUMMER SOIREE

Saturday, June 13, 2026

Geva Theatre

Join us in celebrating the 25/26 Season, featuring performances from stars across the season, students from our 2025 Summer Academy program, an exclusive peek of a show from the upcoming season, and the presentation of the Linda Cornell Weinstein Legacy Award.

For more information visit gevatheatre.org/encore

PROGRAM BOOK PRODUCED BY

Buffalo Spree
Publishing, Inc.

PRESIDENT & CEO
Sharon Levite

VICE PRESIDENT/CHIEF REVENUE OFFICER/PUBLISHER
Barbara E. Macks

EXECUTIVE EDITOR Katie Smith

MANAGING EDITOR Donna Hoke

CREATIVE DIRECTOR Jean-Pierre Thimot

ART & PRODUCTION

SENIOR GRAPHIC DESIGNERS

Joshua Flanigan

Kim Miers

Nicholas Vitello

GRAPHIC DESIGNER

Rachel Kaznica

TO ADVERTISE

buffalospree.com or call

716-972-2250

ABOUT GEVA THEATRE



Geva Theatre is a not-for-profit theatre company dedicated to creating and producing singular theatre productions and programs that serve the Rochester region and beyond, by illuminating the fullness of our many human experiences.

Founded in 1972 by William Selden and Cynthia Mason Selden, Geva was originally housed in the Rochester Business Institute building on South Clinton Avenue. In 1982, Geva purchased and converted its current space – formerly a NYS Arsenal designed by noted Rochester architect Andrew J Warner and built in 1868 – and opened its new home at the Richard Pine Theatre in March 1985. Geva operates two venues – the 516-seat Elaine P. Wilson Stage, and the 180-seat Ron & Donna Fielding Stage.

As one of the country's leading theatre companies and a member of the national League of Resident Theatres, Geva produces a varied contemporary repertoire from musicals to world premieres celebrating the rich tapestry of our diverse community. We draw upon the talents of some of the country's top actors, directors, designers, and writers who are shaping the American Theatre scene.

Geva's Education Department serves thousands of students annually through student matinees, in-school workshops, the acclaimed Summer Academy training program, and other programs. Geva's New Play Development Programming offers new and established writers a nurturing environment from which to take their work to the next level. Geva has presented approximately 400 play readings and workshops since its inception. Nearly 70 Geva-developed plays have had subsequent productions around the country. Geva's Literary Department produces multifaceted programs such as Geva *Insights* that deepen the appreciation of the work on our stages, provide opportunities for regional dialogues, and help fulfill Geva's anti-racism commitments through collaborative programming.

An active member of the Rochester community, Geva offers a multitude of opportunities for our audience and community members to engage with live theatre and the country's best artists. Since the breadth of Geva's programming cannot be sustained on ticket sales alone, this contribution to the region's cultural, social and economic vitality is recognized by grants and charitable contributions from federal, state and local government agencies, national and local foundations, and businesses and individuals from throughout the region.

For more information: GevaTheatre.org.

ACKNOWLEDGING THE LAND

A land acknowledgement creates a more accurate picture of the history of the lands and waterways we call home and pays respect to the Indigenous People who have stewarded them from time immemorial. At Geva, we offer this statement as part of our anti-racist values and to help us all unlearn and relearn the history that has brought us here to the land we call the United States. With this understanding, we can envision a new path forward, led by the principles of equity and justice.

American society as it exists today owes its identity and vitality to generations from around the world who contributed their hopes, dreams and resources to making the history that led to this moment. Some were stolen and enslaved here against their will, some were drawn to leave their distant homes in search of a better life, and some have stewarded this land for more generations than can be counted. Acknowledging the hardships and atrocities that many peoples have suffered on American soil is critical to building mutual respect and connection across all barriers of heritage and difference. By honoring this truth, we begin this effort to acknowledge what has been purposefully buried.

There are 567 federally recognized Indian Nations (variously called tribes, nations, bands, pueblos, communities and Native villages) in the United States. Additionally, there are tribes located throughout the United States who are recognized by their respective state governments.



Graphic by Eric E. Doxtator

Geva's Acknowledgment

We are gathered in the ancestral and unceded territory of the Onöndowa'ga, or "the people of the Great Hill." In English, they are known as Seneca people, "the keeper of the western door." Together, with the Mohawk, Cayuga, Onondaga, Oneida, and Tuscarora, the Seneca make up the sovereign Haudenosaunee Confederacy. We pay respects to their elders, past and present. Please take a moment to consider the many legacies of violence, displacement, genocide and migration that bring us together here today. And please join us in uncovering such truths at any and all public events.

To learn more about the Native people in our region and the Canandaigua Treaty of 1794, visit ganondagan.org.

MISSION, VISION, AND VALUES

Our Mission

To create and produce singular theatre productions and programs that serve the Rochester region and beyond, by illuminating the fullness of our many human experiences.

Vision

To work in collaboration with the most exhilarating creatives and organizations in the field – locally, nationally and internationally. To produce and present vital live theatre and multi-disciplinary experiences, and essential education and engagement programs, involving a diverse array of perspectives, for and with the communities that comprise the greater Rochester, NY region.

Values

Geva values artistic courage, sustainability, excellence, boundless hospitality, empathy, and anti-racism and inclusion.

Artistic Courage

We foster a culture that invites us to dream up new worlds. We challenge ourselves and our audiences to embrace theatre-making that makes the seemingly impossible possible.

Sustainability

The decisions we make in the present are decisions that ensure our future. We care for our organization, our resources – human, financial, and natural – and our communities in a way that will sustain Geva for future generations.

Excellence

We hold ourselves and each other to the highest standards. We approach our work as lifelong students: always striving to learn, evolving our craft, and deepening our practice.

Anti-Racism & Inclusion

We strive to overcome systemic inequities through active inclusivity, equity, accountability, anti-discrimination and anti-racism practices as defined by Geva.

Boundless Hospitality

All are welcome at Geva regardless of ability, where they come from, or how they identify. We endeavor to make our productions, programs, and space accessible and inclusive to cultivate a true sense of belonging.

Empathy & Transparency

An organization is best when all individuals are at their best. We center empathy, compassion, and transparency in our practices, ensuring that our artists and staff thrive in a workplace environment of mutual respect, trust and kindness.



Harter Secrest & Emery LLP
ATTORNEYS AND COUNSELORS

Proudly
supporting
the arts.



hselaw.com

THE ARTS MOVE PEOPLE.



Champion the arts with support
that will last a century, not a season.
racf.org/arts



THE
COMMUNITY
FOUNDATION

RESIDENT STAFF & ARTISTS

ELIZABETH WILLIAMSON (she/her)
Artistic Director

JAMES HASKINS (he/him)
Executive Director

STAFF LEADERSHIP

JOSEPH BIAGINI (he/him)
Production Manager

FRANK DEL VECCHIO (he/him)
Controller

JASMINE B. GUNTER (she/her)
*Resident Director/
Associate Producer*

SARAH HALEY (she/her)
Director of Marketing

GITANA MIROCHNIK (she/her)
Director of Development

JEFFREY L PAGE (he/him)
2025/2027 Artist in Residence

JACQUELINE RAYMOND
WEGMAN (she/her)
Director of Connectivity

THALIA SCHRAMM (she/her)
General Manager

DELANNA STUDI (she/her)
2024/2026 Artist in Residence

ARTISTIC & MANAGEMENT

SARAH HARTMANN (she/her)
Interim Literary Manager

JILLIAN SAJDA (she/her)
Company Manager

HAZEL PENROSE (she/her)
*Production & Company
Management Assistant*

NICOLE STEIN (she/her)
Executive Assistant

AUDIENCE SERVICES

JOHN HAMOLSKY (he/him)
Senior Manager of Guest Services

TIM INTILI (he/him)
Director of Ticketing

CASSIE WEAVER (she/her)
Box Office Supervisor

NICOLETTE VENTIMIGLIA (she/her)
Bar Manager

CARLEA GRANT (they/them)
Assistant Guest Services Manager

JACE JACOBS (he/him)
Assistant Front of House Manager

NANETTE FALCHI (she/her)
Giftshop Services

ALEX BERARDI (he/him)

SAM KAPLAN (they/them)

HANNAH MORENO (she/her)

ASHLEY ROBB-CROCKETT (she/her)

MARLI WORDEN (she/her)

Box Office Associates

SUE BELLINGER (she/her)

CARLY CRESSMAN (she/they)

MARK DI NITTO (he/him)

MARY DUGAN (she/her)

KEVIN SENE (he/him)

House Managers

RYLEE CECIL (she/they)

MICHAEL FAMBRO (she/her)

AUBREY REYNOLDS (she/her)

J. IAN REYNOLDS (he/him)

MARY REYNOLDS (she/her)

BELLE RIVERA (she/her)

BRIAR ROSE (she/her)

Bartenders

CONNECTIVITY

DEJA COTTON (she/her)
Education Coordinator

ERITREA HAILE (she/her)
Connectivity Assistant - Engagement

MELISSA COYLE

JACK LANGERAK

BRIGITT MARKUSFELD

LEELA MUNSIFF

JONATHAN NTHEKETHA

ANDREA PARADA

DELORES JACKSON RADNEY

MARY MÉNDEZ RIZZO

ELIANA ROWE

JEAN GORDON RYON

MJ SAVASTANO

TERRAN SCOTT

DAVID SHAKES

SHAWNDA URIE

KAE WOODRUFF WILBERT

PERRY GROUND,
(ONONDAGA, TURTLE CLAN)

ESTHER WINTER

MARC DAVID WRIGHT

Artist-Educators

SOFIA UBILLA (she/her)

Directing Fellow

COSTUMES

JENNIFER BAYANG (she/her)
Costume Shop Supervisor

MICHAELA LINCOLN (she/her)
Cutter/Draper

REBEKAH CLOW (she/her)
First Hand

BRI MATSON (she/her)
Stitcher

PAIGE WALDRON (she/her)
Wardrobe Supervisor

DEVELOPMENT

SEAN BRITTON-MILLIGAN (he/they)
Event Manager

JUDITH LEMONCELLI (she/her)
Grants Manager

SARAH MAYFIELD (she/her)
Development Coordinator

FINANCE & OPERATIONS

ANNA BECK (she/her)
Finance Assistant

CLIFF LAMPLEY (he/him)
Facilities Manager

LAURIE MASOOD (she/her)
Finance Volunteer

LAMONT TITUS (he/him)
Environmental Services

LIGHTING

DEREK A. MADONIA (he/him)
Lighting Supervisor

CHRIS NIMICK (he/him)
Electrician/Light Board Programmer

ANDREW LA FAVOR (he/him)
Electrician

ESTHER WILKINS (she/her)
Electrician

MARKETING

ANDY GERMUGA (he/him)
Sales Manager

AMANDA RIEKSTINS (she/her)
Graphic Designer

KYLE OSENBACH (he/they)
Marketing Assistant

JUNE KINSELLA (she/her)
Media Buyer/Frontline Advertising

PRODUCTION

IAN AVERY (he/him)
Stage Operations Supervisor

JULIA BREGY (she/her)
Resident Stage Manager

KEVIN GREGORY DWYER (he/him)
Resident Stage Manager

NATE KELLY-DUMONT (he/they)
Crew Swing

PROPERTIES

THERESA GRANGER (she/her)
Properties Supervisor

RILEY BATES (she/her)
Properties Artisan

SCENIC ARTISTRY

ALEX STOEHR (he/him)
Scenic Charge Artist

EDDIE WARRICK (they/them)
Scenic Artist

SCENERY CONSTRUCTION

DAVID CROUSE (he/him)
Technical Director

SHAWNA COLVILLE (she/her)
Carpentry Supervisor

RIVER BAUGH (they/them)
Carpenter

SOUND

ANDREW MARK WILHELM (he/him)
Sound Supervisor

EMJAY MULLIN (they/them)
Audio Engineer

KELLY PROTZ (they/them)
Audio Engineer

MARK CUDDY
Artistic Director Emeritus

CORPORATE, FOUNDATION & GOVERNMENT PARTNERS

*Geva Theatre gratefully acknowledges the following businesses, foundations
and government agencies for their generous support.*

(Donations listed are for the period 1/1/25-12/31/25.)

2025-2026 SEASON SPONSOR

ESL Federal Credit Union

2025-2026 SEASON HONORARY PRODUCER

Dr. Dawn Lipson

\$100,000+

The Shubert Foundation

\$50,000-\$99,999

7Crest Financial Partners, Ameriprise
Private Wealth Advisory Practice
The Davenport-Hatch Foundation
William & Sheila Konar Foundation*
New York State Council on the Arts**
NYS Senator Samra G. Brouk
Nixon Peabody LLP
Vision Automotive Group

\$25,000-\$49,999

Arts & Culture (Vitality) Fund at the
Rochester Area Community
Foundation
Avangrid Foundation
Buckingham Properties, LLC
County of Monroe
Daisy Marquis Jones Foundation*
ESL Charitable Foundation*
Louis S. & Molly B. Wolk Foundation*
Mary S. Mulligan Charitable Trust,
Bank of America, N.A., Trustee**
WXXI

\$10,000 - \$24,999

Timothy & Margaret Busch Foundation
City of Rochester
Donald F. & Maxine B. Davison
Foundation*
Fred & Floy Willmott Foundation
Glover-Crask Charitable Trust
Heveron & Company, CPAs, PLLC

Kilian J. & Caroline F. Schmitt

Foundation*
Lisk Morris Foundation*
Madeline's Catering
McCarthy's Tents & Events
National Endowment for the Arts
The Riedman Foundation
Rochester Area Community Foundation
Rubens Family Foundation*
St. John's
Joseph & Irene Skalny Charitable Trust*
Volvo Cars Rochester
WHEC-TV, LLC

\$5,000 - \$9,999

3 City Center
Audacity Operations, Inc.
iHeartMedia/Clear Channel Broad-
casting
The Joseph & Anna Gartner Foundation
Harter Secrest & Emery LLP
Labella Associates, P.C.
J.M. McDonald Foundation*
Max A. Adler Charitable Foundation
Mission Advancement, LLC
News 8 WROC-TV
RG&E
Theatre Development Fund
- NYSCA & TDF's TAP+
John F. Wegman Fund at
The Community Foundation*
WDKX FM
WUHF-TV

\$2,500 - \$4,999

Ames Amzalak Memorial Trust*
Buffalo Spree Publishing, INC.
Center for Adolescent & Young Adult
Health
John & Carol Condemni Fund
at Rochester Area
Community Foundation

Cornell/Weinstein Family Foundation*

The Gouvernet Arts Fund at
the Community Foundation
Hildebrandt Family Artistic Enhance-
ment Fund
The New York State Division of
Homeland Security and Emergency
Services (DHSES)
The Guido and Ellen Palma Foundation
Paychex Charitable Foundation
Rockcastle Florist
WHAM
Elaine P. and Richard U. Wilson
Foundation
WRWW-FM

\$1,000 - \$2,499

Actors' Equity Foundation
Airigami
Bond Schoeneck & King Law Firm
Brown & Brown
Canandaigua National Bank
Century Liquor & Wines
Entre Computer Services
Get Coked Bakery***
GLC Business Services
Johnson & Johnson
The Jane Parker Foundation
The Queenan Foundation
Sinclair Broadcast Group
Tito's Handmade Vodka
True North Executive Solutions
Wegmans Food Markets*

\$500 - \$999

EDMAC Foundation, Inc.
JAZZ 90.1
Johnson Controls Foundation
Marshall Partners
Rohrbach Brewing Co.

We have made every effort to ensure the accuracy of these donor lists.
However, if you see an error or omission, please accept our apology,
and kindly call the Development Office at (585) 420-2049.

*Education Supporter

**Literary or New Works Supporter

***Home for the Holidays Supporter



ANNUAL FUND DONORS

*Geva Theatre thanks the following individuals for their generous contributions.
(Donations listed are for the time period 1/1/25-12/31/25.)*

LEADERSHIP CIRCLE

\$50,000+

Dr. Dawn Lipson (Honorary Season Producer) 🍷

\$10,000-\$49,999

Anonymous (3)
Patrick & Barbara Fulford 🍷
David & Patricia Gardner 🍷
Dr. Tomás C. Hernández*
& Dr. Keith S. Reas
Joe & Dale Klein
Harold & Christine Kurland 🍷
Barbara LaVerdi
& Bryan Donnelly 🍷
Matthew López & Brandon Clarke
Diane & Jerry McCue
Jeff & Lisa Paille
Elizabeth Rennert* 🍷
Elise Rosenfeld
Mimi & Sam Tilton 🍷
Krestie Utech
Charis & Rich Warshof 🍷
Helen A. Zamboni
& Steven I. Rosen 🍷

\$7,500-\$9,999

Bonnie Garner 🍷
Joanna & Michael Grosodonia
Jane Hasselkus & Richard Edic
Warren+ & Joyce Heilbronner 🍷
Faheem & Laurie Masood
Averil & Michael Riley
Richard Schwartz 🍷
Joan & Ken Slater
Elizabeth M. Teall

\$5,000-\$7,499

Anonymous
Peggy Boucher 🍷
Barbara & John Bruning 🍷
Philip & Sharon Burke
Margaret & Tim Busch
Essie Calhoun-McDavid
& Bernard McDavid
Betsy & John Carver
Gloria Culver & Joe Anderson
Bill Eggers & Deborah McLean
Dave & Nance Fiedler 🍷
Joanne Gianniny 🍷
Richard & Kim Gray
Norman Horton+ 🍷
Connie Klein
Glenn & Nancy Koch
Connie L. Leary
Christine Licata
Dan & Kiki Mahar
Nanci Malin & Abe Weiss
Michael & Frances Millard
Dan & Jo-Ann O'Brien
Laurel Pace

LEADERSHIP CIRCLE (cont.)

Don & Robin Pulver
Janet S. Reed
Drs. Carl & OJ Sahler
Gail Shoemaker
Susan & Robert Touhsaent*
John S. Tritten
Janet M. Tyler 🍷
Thomas & Ann Ward
Dr. Stephen R. Webb
Sherwin Weinstein
& Linda Cornell Weinstein* 🍷
John Williams
Herb Winkelmann, Jr.

SPOTLIGHT CIRCLE

\$2,500 - \$4,999

Anonymous
Daniel & Elizabeth Abbas
Jeanine Arden-Ort
& Dr. Daniel Omt
Robert D. Baden 🍷
Dennis & Mary Bassett
Carol & John Bennett
Barbara Berman
Drs. Karen & Mark Blazey
Nelson A. Blish & Sharon Stiller
Robert & Diane Boni
David J. & Margaret M. Burns
Center for Adolescent
& Young Adult Health
John & Carol Condemni Fund at
Rochester Area Community
Foundation
Joan S. Dalberth
Barbara de Leeuw
Gary M. Domenico
& Barbara E. Buscaglia
Ann Dozier & Guy Martin
Hope Drummond
Peter Fackler & Kelly Barrett
James & Kathy Farrar
Stan & Reenie Feingold
Richard+ & Joan Fenton*
Paul & Mary Fromm³
Ellen Garfinkel
Pam Giambrone 🍷
Ellen H. Goldenberg
Lori & Scott Green
Christina Gullo & John A. Mueller
Terry & Eileen Hartmann
James Haskins & Michael Whistler
Nan & Tom Hildebrandt
Dr. Jack & Harriette Howitt
Emily Jones & Deborah Hughes
Paul & Lynne Kroner
Abhas Kumar
& Chetna Chandrakala
Diane & Stephen Lalonde

SPOTLIGHT CIRCLE (cont.)

Jennifer Leonard
& David Cay Johnston
Edith M. Lord
Carol & Nick Love 🍷
Sarah Mangelsdorf
& Karl Rosengren
Lisa Martinez DeVinney
Pamela McGreevy
Peter & Beth Messner
Steve Metzger
Barbara Mitacek**
Robert Neale & Rick Portier
Rhonda Noto
William J. O'Connor, Jr.
Shree Pandya
Karen & Don Pryor
Tom & Tammy Rogers
Dr. Gerald & Maxine Rosen
Jonathan Rosenfeld & Jerry Fisher
Laura J. Sadowski
Harold & Judy Samloff
Gary B. Schaefer
Wolf & Elizabeth Seka
Kelly & Kathleen Shea
Malcolm & Elaine Spaul
Franceen Elias-Stein & Todd Stein
James & Georgine Stenger
Judy & Richard Stiehler
Bob & Gayle Stiles
Jim & Pam Stoffel
Joshua Stubbe & Katie Baynes
Wyndy Turner
Joyce & William Weir
Carol J. Whitbeck
Elizabeth Williamson
& Jennifer Tennant
Nicki Zongrone

\$1,500 - \$2,499

Pamela & Todd Allen
Allan C. Anderson
Susan Anderson
Suzanne Bell & Chris Brown⁵
Mary & Brendan Brady⁵
Keith & Celeste Cleary⁵
Mark Cuddy & Christina Selian
John & Alison Currie⁵
Doug & Stephanie Dickman
Mr. Raymond Dreher &
Dr. Elaine Tunaitis
Sergio & Mary Ann Esteban 🍷
Carl Grimm
Sue & Jim Hoefner
Laurie Haelen & Mary McCrank
Carol K. Hardy
Elmer C. Hartman
Nancy D. Hessler⁵
Daniel & Barbara Hoffman
In honor of Lisa Hoffman,
who loved her Geva family

ANNUAL FUND DONORS

SPOTLIGHT CIRCLE (cont.)

Jean Horton
Victoria Kaminski
Hon. Joan S. Kohout
Karen Kral
Mary Ellen Lansing
Wes & Mary Micket⁵
Stacey Miller & Brad VanAuken
Nannette Nocon
& Karl Wessendorf 🌿
David & Marjorie Perlman
Mary Jane Proschel
Thomas Smith
Sharon & Leal Smith⁵
Rev. Nancy D. Stevens
& Mr. David L. Williams⁵
Maggie & Charlie Symington 🌿
Scott Turner
& Mary Worboys-Turner
Sheree Usiatynski & David Evans
Judy & Erik von Bucher
Nina Walker
John & Melanie Ward
Philip & Anne Wehrheim
Kathy Wheat & Fred Schulte

\$1,000 - \$1,499

Anonymous
Jeanne M. Beecher
Eric & Marcia Birken
Mary Allison Callaway
Catherine Callery & Michael Nazar
Katherine Cove⁵
Suzanne & Allan Chapman
Terry Doherty
David & Anne Ferris
Carolyn Fisher & Tim Olsen
Sandra Foley
Ann & Steve Fox⁵
Bob & Bobbie Freitag
Richard Galvin
Dom & Nita Genova
Don & Natalie George
The Gill Family Fund
William & Susan Gornall
George & Helen Greer Advised Fund
At The Community Foundation
Brigitte Gueldenpfennig
Richard Hare
Ebets & Tom Judson⁵
Judy & Norm Karsten
June Kinsella
Arnold Kovalsky
Marcy & Ray Kraus
Ellen Lewis
Amy Libenson & Brett Shulman
Todd Liebert
Christopher & Susan Luedde
Patrick Macey & Jerry Casey
Richard Mapes
Bruce & Eleanor McLeair
Ralph & Martha Meyer
Thomas & Patricia Mitchell
Don & Roxann Muller

Thomas Mumey
Dr. Gary & Ruth Myers⁵
Kathy & Ted Nixon
Lois & John Palomaki
Dr. Ramon & Judith Ricker
Marvin Ritzenhaler & Steven Jarose
Nellie Rosenberg
Richard R. Spellicy
Jacqueline Sperandio
Richard & Sandy Stein
Samantha & Robert Tassone
Benjamin & Sandra Wallace
Jean Carty Weaver
Richard Whitmore

\$500 - \$999

Anonymous
Karen Abbas
Martin Abraham
Neil Ambrosini
David & Marca Anderson
David & Jan Angus⁵
Betsy & Gerald Archibald
Jim & Linda Baroody
Brian Bennett
Robert Bergin
Linda M. Betstadt⁵
Dennis & Amy Boike⁵
Jeff & Kathy Bowen⁵
Bill Chandler
Susan & Frank Crego⁵
Steven Daniel & Joan Zeller
Joe & Judy Darweesh⁵
Gabriel Del Vecchio
Dan & Jody DiLoreto
Joanne & Mark Drexler
Marjorie & Stephen Elder
Gerald G. Estes⁵
Sherman & Anne Farnham
Joan Feinbloom
Andrea & Richard Feldman
Susanna Ferris
Elizabeth Fisher
Robin Fisher
Sandra & Neil Frankel
Julie Frost
Robert Goeckel & Gay Greene
Cynthia Goetzmann
Martin & Sherrie Handelman
Joe & Linda Hanna⁵
Chris Hastings
Mary E. Haverfield⁵
Brud & Molly Hedges
A. Dirk & Linda Hightower
John & Barbara Holder⁵
Audrey Holly
Louise D. Holmes
John & Bonnie Hood*
Douglas & MaryAnne Jones⁵
Cornelia Kamp
Rabbi Alan & Rabbi Jan Katz
Michael Keefe & Joann Surre-Keefe
David A. & L. Laurie Kennedy

Mark Kolko & Mona Friedman Kolko
Ellen & Charles Konar
Michael & Marcy Kucharski
Rahul & Nirupama Laroia
Thomas & Connie Lathrop
Thomas & Terrie Lee⁵
Doris & Austin Leve
Meg & Bill Lloyd⁵
Thomas & Sandra Madejski⁵
Massie Family Fund at Rochester
Area Community Foundation
Thomas & Betsy Matthews
Gail Mazur
Stanley & Janis McCormack
Sanford & Jill Miller
Jonathan Mink & Janet Cranshaw
Helen Newman
Marie & Donald Oakleaf
Martha & Kevin O'Brien
Vinny Orlandini
Eric & Penelope Pankow
Rick Papaj
Marian Payson & Helen Wiley
Priscilla Petersen
Terry Platt & Dianne Edgar
Thomas & Nancy Poeth⁵
Marjorie Power
Edwin & Roberta Przybylowicz
Mr. & Mrs. Andrew Publow
Ken & Sheila Reasoner
James G. Reed
Abby & Josh Reinhard
Valerie & Stefan Reuss
Nancy Rice
Bea Rosenbloom
Richard & Louise Sadowski
Caroline Schultz
Anthony & Gloria Sciolino
Kate Sheeran
Jim & Marie Sorrentino
Tammy Strassburg
Dave Tang
Edward Tanner & Elizabeth Treiber
Janis Tomei
Wayne & Anne Vander Byl
Pierce & Elizabeth Webb
Anne Wallace
Susan & Paul Wilkens
Kitty J. Wise

\$250 - \$499

Anonymous (2)
Carol Adler
Thomas & Ann Adler
Suzanne & Richard Albright
Michael Amorese
Bob & Dawn Auerhahn
Virginia Bachelor & Skip Battaglia
Mary Jane Bafundo
Jon & Pat Bertucci
MaryAnn & Peter Borrelli
Patricia Bradley
Patricia Braus & Edwin Lopez

ANNUAL FUND DONORS


Linda D. Brooken
Robert Buhite
Andrew Burke
Dr. & Mrs. Richard & Peggy Burton
Lori Busch
Stephanie Caffera
Jane Capellupo
Thomas Casselman
Robert & Barbara Castle
Vanessa Cheeks
E. A. Claypoole⁵
Bruce Coates
Dennis & Sharon Conheady
Carol & Stuart Cooper
Richard & Claire Damaske
Jacqueline Davis
Susan Davis
Linda Delaney
James Dillon
The Dominas Family
Lynn & Pam Eberhardt
Samuel L. Edwards
& Judith K. Rickey
Trevor & Elizabeth Ewell
Ty Foster
Lauren Frank & Annette Miller
Lisabeth Frarey & Michael Christie
Bruce & Elizabeth Freeland
Janet Gates
Andrew & Jacquie Germanow
Joy Goodman & John Sawyer
Frances Gotsik
William & Ruth Grace
Dorothy Halligan
Judith & Robert Hannon
Jeff & Ruth Hedin
Ken Hendel
Carol Herring
Donna & John Himmelberg
James & Betsy Hoefen
Ellen Horey-Thiede
James & Sherrill Ison
Drs. Nadette Jacob & Jules Zysman
Gail & Howard Jehan
Lori & Frank Karbel
Robert G. Kimmel
Patrick & Elizabeth Kinney
Wally & Diane Knox
Werner & Susan Kunz
Kathleen & Alfred Laitenberger*
Thomas Lay
John Lebens & Florence Higgins
Melissa Levi
Litt Family Fund
Marcia Lowry
Dara Lubin
Ruth & Alfred Marchetti

Judie & George Mayo
Tom & Emily McCall
Merri-Lou McKeever
Chris & Karen Mesolella
Daniel M. Meyers⁵
David & Nancy Munson
Richard Nangreave & Olga Mendez
Thomas & Ronnie Nescot
James & Lois Norman
Jennie Oberholtzer
Charlie Owens
Phil Palumbo
Maureen & Marty Palumbos
Robert & Linda Pearles
James Peters
Frank Petrus
Dr. Lee D. Pollan
Aqua Porter
Dr. Brock Powell
Gerianne Puskas
Michael Radler
Mark Raeside
Dawn Riedy & David Berg
Michael & Linda Riordan
Michele Rivera
Russell R. Roberts
Marion Robinson⁵
Eugene & Marlene Rogalski
Karen Ross
Charles & Carolyn Ruffing⁵
Christine Schaller
Kenneth Schirmuhly
David & Nancy Schraver
Drs. David & Carolyn Schuler
Jon & Katherine Schumacher
Norm & Jane Silverstein
Timothy Slisz
Jennifer Steier
Ann H. Stevens
& William J. Shattuck
Stephen Sulkes & Melissa Schiff
Marianne Sullivan
Thomas & Linda Sullivan
Thomas & Rose Swartz
Alexandra Terziev & Allan Greenleaf
Sue & Karl Thielking⁵
Helen Urzetta Tortorici
Charles & Marian Turner
Sandra Vallot
Gerald & Beverly Verbridge
Patricia H. Wehle
Ann D. Weintraub
Robert S. Westfall
Mary Ann Whitmore
John & Laurie Witmeyer⁵
Lorraine Woerner
Peng Wu

Eric Zeise & Ellen Henry
Charlie & Judy Zettek⁵
David & Mary Lou Zimpfer
Marcia & Ted Zornow

Other Donors included in Visionary Society

Anonymous (2)
Robert August
Helen H. Berkeley
Joyce & Allen+ C. Boucher
The Gouvernet Arts Fund at The
Community Foundation
Gwendolyn Hoffberg
Jack & Barbara Kraushaar
Dan & Nancy Loughran
Jeanne B. McHugh+
Mike & Mary Ninnie
Dan & Jo-Ann O'Brien
Jane Parker & Fran Cosentino
Wolfgang Pfizenmaier
Stephen I. Rosenfeld+
William H.+ & Anne Saunders
Kim & Janet Tenreiro
Elizabeth Vanhorn+
Deborah Wilson
Susan Yara+
Eric I. Zeller Fund at Rochester Area
Community Foundation

 Donors whose lifetime philanthropic
commitment totals over \$100,000

⁵ Donors who have made a three-year
commitment to Geva's Annual Fund

*Education Supporters

**Literary or New Works Supporter

+Deceased

*We have made every effort to ensure the accuracy of these donor
lists. However, if you see an error or omission, please accept
our apology, and kindly call the Development Office at (585)
420-2049.*

PLAYWRIGHT'S SOCIETY



Geva Theatre gratefully recognizes the following generous donors who have made a three-year commitment of \$2,500 or more to Geva's Annual Fund.

(Donations listed are for the time period 1/1/25-12/31/25.)

Anonymous
Daniel & Elizabeth Abbas
Jeanine Arden-Ornt
& Daniel Ornt
Dennis & Mary Bassett
Katie Baynes & Joshua Stubbe
Carol & John Bennett
Nelson A. Blish & Sharon Stiller
Robert & Diane Boni
Peggy Boucher
Barbara & John Bruning
Philip & Sharon Burke
David J. & Margaret M. Burns
Margaret & Tim Busch
Essie Calhoun-McDavid
& Bernard McDavid
Betsy & John Carver
Center for Adolescent
& Young Adult Health
Gloria Culver & Joe Anderson
Ann Dozier & Guy Martin
Hope & Lance Drummond
William Eggers
& Deborah McLean
Franceen Elias-Stein
& Todd Stein
Richard+ & Joan Fenton
Dave & Nance Fiedler
Paul & Mary Fromm
Patrick & Barbara Fulford
Bonnie Garner
Ellen H. Goldenberg
Lori & Scott Green
Joanna & Michael Grosodonia
Christina Gullo
& John A. Mueller

James Haskins
& Michael Whistler
Jane Hasselkus & Richard Edic
Dr. Tomás C. Hernández
& Dr. Keith S. Reas
Emily Jones & Deborah Hughes
Joe & Dale Klein
Paul & Lynne Kroner
Abhas Kumar
& Chetna Chandrakala
Harold & Christine Kurland
Diane & Stephen LaLonde
Barbara LaVerdi
& Bryan Donnelly
Jennifer Leonard
& David Cay Johnston
Edith M. Lord
Carol & Nick Love
Dan & Kiki Mahar
Lisa Martinez DeVinney
Faheem & Laurie Masood
Diane & Jerry McCue
Peter & Elizabeth Messner
Steve Metzger
Michael & Frances Millard
Barbara Mitacek
Robert Neale & Rick Porlier
Nannette Nocon
& Karl Wessendorf
Rhonda Noto
William J. O'Connor, Jr.
The Pace Family Fund
Shree Pandya
Don & Robin Pulver
Averil & Michael Riley
Tom & Tammy Rogers

Dr. Gerald & Maxine Rosen
Laura J. Sadowski
Drs. Carl & OJ Sahler
Harold & Judy Samloff
Gary B. Schaefer
Richard Schwartz
Gail Shoemaker
Joan & Ken Slater
Malcolm & Elaine Spaul
James & Georgine Stenger
Bob & Gayle Stiles
Jim & Pam Stoffel
Elizabeth M. Teall
Mimi & Sam Tilton
Susan & Robert Touhsaent
John S. Tritten
Wynndy Turner
Janet M. Tyler
Krestie Utech
Charis & Rich Warshof
Sherwin Weinstein
& Linda Cornell Weinstein
Joyce & William Weir
Carol J. Whitbeck
John Williams
Elizabeth Williamson
& Jennifer Tennant
Herb Winkelmann, Jr.
Helen A. Zamboni
& Steven I. Rosen

We have made every effort to ensure the accuracy of these donor lists. However, if you see an error or omission, please accept our apology, and kindly call the Development Office at (585) 420-2049.

HANDS-ONLY CPR

For lifesaving tools,
tips and how to
participate visit the
website below:



CITY of ROCHESTER
Malik D. Evans, Mayor



**cityofrochester.gov/
heartsafe**



GEVA LEGACY SOCIETY

Geva Theatre gratefully acknowledges the generosity of the following friends of the theatre who have formalized their commitment to Geva in their estate plans:

Anonymous (2)
Jeanne M. Beecher
Helen H. Berkeley
Allen C. Boucher*
Beverly T. Bowen*
John & Betsy Carver
Derek & Janice Chapman*
Glenn & Rebecca Fadner
Donna Fielding*
Kenneth J. Figenschier+
Elizabeth Fisher
David & Linda Friedman
Jay+ & Betsy T. Friedman
Patrick & Barbara Fulford
Susan J. Gornall+
Julia Grant
Jean Edgcumb Groff*
Richard & Marilyn+ Hare
Warren* & Joyce Heilbronner
Drs. Tomás D. Hernández
& Keith S. Reas
Nancy D. Hessler

David L. Hoffberg*
Norman Horton*
Nancie R. Kennedy*
Jack & Barbara Kraushaar
Drs. Dawn & Jacques+ Lipson
Richard Malinich*
Joseph Mancini*
Jeanne B. McHugh*
Ernestine W. Murray Chandler*
Eunice* & Donald Naulin
Emily Neece & Alan Ziegler+
Dolores B. Owens*
Laurel Pace
Ann B. Parks*
Dr. Ramon & Judith Ricker
Marie Roberts
Dr. & Mrs. Harry Rosen
Stephen I. Rosenfeld*
Laura J. Sadowski
James G. Scanzaroli*
Richard & Vicki* Schwartz
Joan & Ken Slater

Ms. Rusty Smith*
Frederick & Mabel Stehler*
Maggie & Charlie Symington
Elizabeth M. Teall
Kim & Janet Tenreiro
Janet & John R. Tyler, Jr.*
Brad VanAuken
Elizabeth VanHorn*
Sherwin Weinstein &
Linda Cornell Weinstein
Henry W. Williams, Jr.*
Catharine J. Wise
John & Laurie Witmeyer
Robert B. Wolf
& Mary Alice Wolf*
Susan Yara*
Helen A. Zamboni

* Gift has been realized
+Deceased

We would be pleased to know if you have included Geva in your estate plans so that we may appropriately honor you.

For information about the Legacy Society, please contact the Development Office at (585) 420-2049.

We have made every effort to ensure the accuracy of these donor lists. However, if you see an error or omission, please accept our apology and kindly call the Development Office at (585) 420-2049.

Geva's Audio Description Program is named after

LISA HELEN HOFFMAN

who fearlessly advocated for access to the arts for individuals who are blind or low vision.

She will always be remembered.

October 2019

Support the Magic of Geva

With your generous support, we can continue to stage remarkable performances that inspire and captivate audiences. Join us in safeguarding the future of world class live regional theatre. Donate to Geva Theatre Today.



Scan the QR Code with your phones camera for more information

TRIBUTES

In Memory of ...

Margaret Bartlett
Diana Moore

Arlene & Bernie Bialaszewski
Anne Melendez

Michael Bowllan
Joanna & Michael Grosodonia

Alan & Joyce Bush
Marcy Bush

Ann Christiansen
Leslie & Mark Rowe

Lana Cohen
Dr. Gerald & Maxine Rosen

Henry Connors
Neil Ball

Robert Cornelison
Rebecca Lavender

Dr. Salvatore Dalberth
Joan S. Dalberth

Fannie Daniels
Williams Daniels

Bruce Dean
Nancy Hill Dean

Cynthia DeFelice
Eileen Godfrey

Shirley W. Dehority
John Dehority

Trish & Teale Dominas
Love, Glen

Marlene Elkin
Ross Elkin

Dave Escher
Delaney Graham

Richard Fenton
Robert D. Baden
Laura J. Sadowski

Shirley M. Ferris
Susanna Ferris

Marc Fisher
Robin Fisher

Sandra Fortunato
Sharon & Carl Wheat

Marilyn Galley
Joseph Galley

Charlotte Graeter
Joyce Henzel

Howard E. Gunerman
Scott Gunerman

Maureen Hendel
Ken Hendel

Lisa Helen Hoffman
Daniel & Barbara Hoffman
Marilyn Tedeschi

Maureen D. Holtzman
Ann Beale
Joanna & Michael Grosodonia
John Holtzman
Ann Holtzman Beale
Janet Holtzman Gates
Ellen Holtzman Zeph
Marcia Ladd
Carol & Nick Love
Claudia Orlando
Katherine Wolf

Jackie James
Lynne Manuel

Dee Kamp
Cornelia Kamp

Sharon Kimmel
Robert Kimmel

Connie Kittle Neer
Tina Lynch

Julie Kraushaar Zurcher
Werner Zurcher

JoAnne LaCasse
Mary Fenton

Bob & Maxine Lay
Thomas Lay

Dr. Marvin Lederman
Dr. Gerald & Maxine Rosen

Erna Lever
Elizabeth Baskin

Steve Luick
Glenda Giles-Luick

Ileen Nelson Sadowski
Carol & Nick Love
Joanna & Michael Grosodonia
Louisa Pierson

Arnold & Janice Ornt
Jeanine Arden-Ornt & Daniel Ornt

Priscilla E. Petersen
The Very Rev'd William H. Petersen

Anne Richards
Diana Moore

Doris Ann Rocha
Andrea Rocha

Steve Rosenfeld
Ellen Goldenberg

Carol & Martin Rosenberg
Charles Rosenberg

Robert Saltzman
Advanced Glass Industries, Inc.
Carol & John Bennett
Joan & Michael Cohen
Loren Cohen
Lisa-Karyn Davidoff
& Larry M. Davidoff
Lori Dolnick
Jerry Goldman
Joanna & Michael Grosodonia
Stan & Michelle Gross
Carol & Nick Love
Dorothy & Neal Madden
Shari Malinow
Joy Manis Piekunka
Tony & Barb Marino
Martin Nemeroff
Ellen & David Neuhaus
Ohara Corporation
Joy Plotnik
David & Gail Pogal
Barry Saltzman
SCHOTT North America
Evan & Monique Spindelmann
Donald & Deborah Waltzer
Sherwin Weinstein
& Linda Cornell Weinstein
Melinda Yanoff

Juliet A. Sandorfi
Marie Fischette

Peggy Savlov
Andrew & Jacquie Germanow

Hilda Selian
Daniel Meyers

We have made every effort to ensure the accuracy of these donor lists. However, if you see an error or omission, please accept our apology, and kindly call the Development Office at (585) 420-2049.

Diane Shear
Dr. Gerald & Maxine Rosen

Joseph F. & Mary Ellen Slisz
Timothy Slisz

Rich Stevens
Karen Stevens

Robert W. Sweeney
Gerald G. Estes

Francisco L. Thorne
Yvonne Thorne

Justin Vidgor
Carol & Nick Love

**Margene Wagstaffe
& Lois Anderson**
Marcy & Ray Kraus

Jane C. Wargo
Jessica Best

Paul & Doris Waterman
Natalie Lemmon

Jack Watkins
Frederick & Suzanne Ricci

Sterling L. Weaver
Jean Carty Weaver

Robert Zale
Liz Zale

Alan R. Ziegler
Anonymous
Dennis & Amy Boike
Amy Bowen
Twyla Cummings
Rose Ericson
Janne Everts
Lauren Frank & Annette Miller
Betsy T. Friedman
Bonnie Garner
Laura T. Garrison
Donna Gillespie
Justin & Leah Goldman
John & Roslyn Goldman
Marjorie Grinols
Joanna & Michael Grosodonia
Elizabeth Harrison
Nancy D. Hessler
Rose-Marie Klipstein
Mark Kolko & Mona Friedman
Kolko
Carol & Nick Love
Dr. Gary & Ruth Myers
Maureen & Marty Palumbos
Nancy Phelps
Louise Pierson
Gus Platas
Jane Plitt

Susan & Nick Robfogel
Harris Rusitzky
Kenneth Schirmuhly
Philip Scully
Maggie & Charlie Symington
Elizabeth M. Teall
Sherwin Weinstein
& Linda Cornell Weinstein
John Williams
Barbara Zappia

Daniel Zimpfer
David & Mary Lou Zimpfer

In Honor of...

Ruth Brown Anderson
Barbara Stevens

Sandra Bills
Dawn Hampsey

Peggy Boucher
Jim Boucher

Margaret Busch
Richard Mapes

Mark Cuddy
Anonymous

Tansy Deutsch
Nancy Brown

Hope Drummond
Clarice Brown

Bonnie Garner
Patti Donoghue

Andy Germuga
Joel Shapiro

Christina Gullo
7Crest Financial Partners-
Ameriprise

**James Haskins
& Geva's Development
Team**
Geriann Puskas

Jane Hasselkus
7Crest Financial Partners-
Ameriprise

Bruce & Sherry Marche
John Williams

Dan Meyers
John Williams

Bob Neale & Rick Porlier
John Williams

Nannette Nocon
Gilbert Chan
Linda Epstein & Robin
Benmergui
Richard Mapes

Roger & Kim Palma
Frank Petrus

Shree Pandya
7Crest Financial
Partners- Ameriprise

Jimmy Payne
Mona Sepulveda

Jacob Pulawski
Kathleen Marks

John Ricks
John Williams

Curtis Rivers
Barbara Stevens

Don & Katie Root
Marc Pelka

Maxine Rosen
Steve Rosen & James Wood

Elise Rosenfeld
Ellen Goldenberg

Laura J. Sadowski
Patti Donoghue

Colonel Dan Snyder
Teresa Levy

Taylor & Sarah Simmons
Vanessa I. Simmons

Christine Talbott
Julie Chen

John Williams
Retired Professionals Society

Catharine Wise
Martin Zemel & Laura Fulton

Richard Yurick
Karen Evans

ENCORE SUPPORTERS

Geva Theatre thanks the following donors for their generous contributions to Encore 2025, the theatre's annual summer fundraising gala.

PRESENTING SPONSOR

7Crest Financial Partners
A private wealth advisory
practice of
Ameriprise Financial Services, LLC.

HONORARY CHAIR

Margaret and Tim Busch
The Busch Family Foundation

PLATINUM SPONSOR

ESL Charitable Foundation
Barbara LaVerdi & Bryan Donnelly

GOLD SPONSOR

Empire Digital Signs
Madeline's Catering

SILVER SPONSOR

Barbara & John Bruning
Philip & Sharon Burke
Hope & Lance Drummond
Nita Genova
Diane & Jerry McCue
Helen Zamboni & Steven Rosen

BRONZE SPONSORS

Entre Computer Services
LaBella Associates
RG&E
Tito's Handmade Vodka
Wegmans Food Markets
Essie Calhoun-McDavid
& Bernard McDavid
Pam Giambrone
Joanna & Michael Grosodonia
Jane Hasselkus & Richard Edic
Robert Neale & Rick Porlier
Shree Pandya
Elizabeth Teall
Mary Worboy-Turner
& Scott Turner

Julie Frost
David & Patricia Gardner
Frances & George Gotcsik
Lori & Scott Green
Joanna & Michael Grosodonia
Christina Gullo & John A. Mueller
Dorothy Halligan
James Haskins & Michael Whistler
Jane Hasselkus & Richard Edic
Christopher Hastings
& Hilary Rosenfeld
Carol Herring
Emily Jones & Deborah Hughes
June Kinsella
Connie & Thomas Lathrop
Barbara LaVerdi & Bryan Donnelly
Alex & Melissa Levi
Bob August & Chris Licata
Sarah Kroetz & Dara Lubin
Faheem & Laurie Masood
Diane & Jerry McCue
Merri-Lou McKeever
Chris & Karen Mesolella
Steve Metzger
Thomas & Pat Mitchell
Nannette Nocon
& Karl Wessendorf
Martha & Kevin O'Brien
William J O'Connor Jr
Catherine & Vinny Orlandini
Rick Papaj
Aqua Porter
Michael Radler
Marlene & Eugene Rogalski
Anonymous
Kate Sheeran
Norm & Jane Silverstein
Jennifer Steier & Chris Zeltmann
Tammy Strassburg
Olena Prokopovych & David Tang
Bob & Samantha Tassone
Elizabeth M. Teall
Wynndy Turner
Sandra Vallot
Dr. Stephen R. Webb
Joyce & William Weir
Carol J. Whitbeck
Lorraine Woerner
Scott Turner
& Mary Worboy-Turner
Helen A. Zamboni
& Steven I. Rosen
John & Nicki Zongrone

ANGEL AUCTION DONORS AND ADDITIONAL SUPPORT

(Donors of \$250 or more)
Anonymous
Martin & Nancy Abraham
Dennis & Mary Bassett
Katie Baynes & Joshua Stubbe
Rob Buhi & Cathy Hahn
Lori Busch
Margaret & Tim Busch
Essie Calhoun-McDavid
& Bernard McDavid
Essie Calhoun-McDavid
& Bernard McDavid
Vanessa Cheeks & Adam Chodak
Sherwin Weinstein
& Linda Cornell Weinstein
Mark Cuddy & Christina Selian
Barbara de Leeuw
Terry Doherty
Dave & Nance Fiedler
Ty Foster

Ravines Winery
Rockcastle Florists
Titos Handmade Vodka
Wegmans

AUCTION & WINE DONORS

(Donors of \$250 or more)
Arthur Murray Dance Studio
BayCreek Paddling Center, Inc.
Billsboro Winery
Black Button Distilling
BOA Ltd.
Body20-Pittsford
California Closets
Carnegie Cellars
Century Liquor and Wines
Crazy Dog T-Shirts
Deer Run Winery
Ethan Allen Pittsford
Design Studio
Finger Lakes Opera, Inc.
Gourmet Goodies
House of Guitars
Hyatt Rochester
ImageOut
Jackson Family Wines
L'Objet Wines
Landmark Society of
Western New York, Inc.
Locust Hill Country Club
Lollypop Farm
MAE Beads
MansoWear
New York Kitchen
Pinnacle Wine & Liquor
Rocco Restaurant:
Monroe Avenues
Cafe & Wine Bar
Rochester Broadway
Theatre League
Rochester Red Wings
Rohrbach Brewing Co.
Stefan Otter Jewelers
Susan B. Anthony Museum
& House
Tantalo Fine Portraits
The Glimmerglass Festival
Tito's Handmade Vodka
Vault Cycle + Box + Move
Wegmans Food Markets
WROC
Philip & Sharon Burke
David & Nance Fiedler
Barbara LaVerdi & Bryan Donnelly
Faheem & Laurie Masood
Nannette Nocon
& Karl Wessendorf
Charlie Owens
Shree Pandya
Sabine Sally
Robert Sanders
Frederick Schamu
Peter Shea
Elaine G. Spaul
John Williams

IN KIND SUPPORT

Billsboro Winery
Century Wine and Liquor
Deer Run Winery
Empire Digital Signs
Entre Computer Services
Fox Run Winery
Genesee Brewery
Gourmet Goodies
Madeline's Catering
Panther Graphics

GOVERNMENT SUPPORT

Geva Theatre gratefully acknowledges the support of



The New York State Council on the Arts,
with the support of Governor
Kathy Hochul and the New York
State Legislature



The County of Monroe
and the County
Executive Adam Bello



Empire State Development
- Division of Tourism -
I LOVE NEW YORK

WELLBeings



At The Highlands at Pittsford, we know
mindful, active, social, curious beings
are WELLBeings.

Independent and Assisted Living

Learn more at VisitHAP.com | 585.586.7600



THE HIGHLANDS
AT PITTSFORD
Rochester's Premier University-Based
Retirement Community



100 Hahnemann Trail | Pittsford, NY 14534 | (585) 586-7600 | VisitHAP.com 

The Highlands at Pittsford campus features Independent Living Apartments and Cottages
as well as Assisted Living at Laurelwood and Memory Care at Laurel Way.

THE TIME AND PLACE FOR A *Welcome Change*



Prepare for new opportunities that stimulate engagement, feed your curiosity, and inspire a fresh desire for learning. St. John's full array of service options address evolving needs within compassionate community settings.

- Independent Senior Living
- Enhanced Assisted Living
- Respite Care
- Rehabilitation
- Skilled Nursing Care
- Dementia Resource Center
- Hospice Care

Many life-enhancing choices await you.

SCHEDULE A TOUR TODAY.
585-760-1300 | stjohnsliving.org





GIVE NEW MEANING TO WHAT TRULY MATTERS.

At ESL, we believe in the worth of our collective strength — to uplift the whole community and help you thrive where you belong.

ESL is proud to support **Geva Theatre** because creativity connects us all.

KEVIN
ESL CUSTOMER
Spencerport



esl.org/you-belong

Membership subject to eligibility. ESL is a registered service mark of ESL Federal Credit Union.

Welcome to Lilac Grove



YOUR NEW OPPORTUNITY FOR VIBRANT LIVING

Now accepting deposits!

Lilac Grove is a new, moderately priced rental community for adults ages 62 and older. Designed with comfort, convenience and community in mind, this 90-unit apartment complex opens in May 2026.

Lilac Grove is here to meet your needs and enhance your lifestyle. As part of the Jewish Home campus, you'll have access to a variety of amenities, engaging programs and a full spectrum of supportive services.

Let's talk about making your move to Lilac Grove for a convenient, carefree community to call home. For more information or to join our waiting list, please call **(585) 341-2306** or visit

JewishHomeRoc.org/LilacGrove.

