



GEVA THEATRE'S 24/25 SEASON SPONSOR

Beautiful

The Carole King Musical

MAY 28 - JUNE 29, 2025

Book by **Douglas McGrath**
Words and Music by **Gerry Goffin & Carole King, Barry Mann & Cynthia Weil**
Musical Arrangement with
Sony Music Publishing
Orchestrations, Vocal and Incidental Music
Arrangements by **Steve Sidwell**
Additional Music Arrangements by
Jason Howland
Co-Production with
Pioneer Theatre Company
Directed by
Karen Azenberg
Choreography by
Gerry McIntyre
Music Direction by
Helen Gregory

Honorary Season
Producer



Geva
THEATRE



Proudly
supporting
the arts.



HSE
Harter Secrest & Emery LLP
ATTORNEYS AND COUNSELORS

585.232.6500

hselaw.com



Harter Secrest & Emery LLP
ATTORNEYS AND COUNSELORS

hselaw.com



AUDITORIUM THEATRE

The 2025-2026 M&T Bank Broadway Season

PRESENTED BY THE ROCHESTER BROADWAY THEATRE LEAGUE AND ALBERT NOCCIOLINO



Clue

LIVE ON STAGE!

OCTOBER 21-26, 2025



DECEMBER 9-14, 2025



JANUARY 13-18, 2026



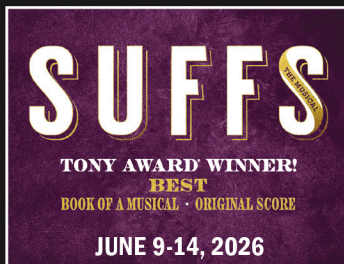
FEBRUARY 18-MARCH 1, 2026



MARCH 24-29, 2026



APRIL 21-26, 2026



JUNE 9-14, 2026

SUBSCRIPTION ADD-ON:



NOVEMBER
18-30, 2025

WWW.RBTL.ORG • BOX OFFICE • 585.222.5000

Enjoy Nature...Together



At the Highlands, there is a new trail system.
Native plants & wildlife. Lots of butterflies & beautiful birds!

Join Us! (585) 586-7600



THE **HIGHLANDS**
AT PITTSFORD
Rochester's Premier University-Based
Retirement Community



100 Hahnemann Trail | Pittsford, NY 14534 | (585) 586-7600 | VisitHAP.com

The Highlands at Pittsford campus features Independent Living Apartments and Cottages
as well as Assisted Living at Laurelwood and Memory Care at Laurel Way.

- **9** Welcome
 - A message from Geva's Executive Director, James Haskins
- **12** *Beautiful: the Carole King Musical* Creatives
- **15** Connectivity at Geva
 - Mondays at Geva
 - Geva Insights
- **16** A Note From the Playwright,
Douglas McGrath
- **19** Biographies
- **29** About Geva Theatre
- **32** Supporters

Thank You to our Sponsors for *Beautiful: the Carole King Musical*



GEVA THEATRE'S **24/25** SEASON SPONSOR

HONORARY SEASON PRODUCER



LEAD PRODUCER

EXECUTIVE PRODUCERS



Sam &
Mimi Tilton



MEDIA SPONSORS





GEVA THEATRE'S 24/25 SEASON SPONSOR

COMING UP NEXT...

ON GEVA'S WILSON STAGE



JUL 15 - AUG 03

Get ready for a toe-tapping, heartwarming celebration of one of country music's most legendary voices! Always...Patsy Cline brings the iconic singer's hits to life in a heartfelt musical packed with humor, friendship, nostalgia, and unforgettable music.

Based on the true story of Patsy Cline's bond with devoted fan Louise Seger, this charming production features beloved classics like "Crazy," "I Fall to Pieces," and "Walkin' After Midnight.

By Ted Swindley

Directed by Thalia Schramm

For Tickets & More Info

Visit GevaTheatre.org, or call or
visit the Box Office at 585-232-4382.





GEVA THEATRE'S 25/26 SEASON SPONSOR

**Don't Miss the
Excitement Here
at Geva Theatre!**

25/26 SEASON

THE PLAY THAT GOES WRONG

SEPT 09 - OCT 12, 2025

SANCOCHO

OCT 14 - NOV 23, 2025

THE WOMAN IN BLACK

JAN 14 - FEB 08, 2026

Neil Simon's Barefoot in the Park

FEB 24 - MAR 29, 2026

FURLOUGH'S PARADISE

APR 14 - MAY 10, 2026

Baron Vaughn: CYCLE BREAKER

APR 28 - JUN 07, 2026

Anastasia THE MUSICAL

MAY 27 - JUN 28, 2026

Special Programming

A Christmas Carol

NOV 22 - DEC 28, 2025

SUBSCRIBE TODAY!

Learn More at GevaTheatre.org



Show titles and dates
subject to change

2024-2025 BOARD OF TRUSTEES

EXECUTIVE COMMITTEE

Jane C. Hasselkus, Chair
Tom Rogers, Treasurer & Chair, Finance Committee
Helen A. Zamboni, Secretary
Diane F. McCue, Vice-Chair & Chair, Development Committee
Christina Gullo, Chair, Nominating & Governance Committee
Wynndy Turner, Co-Chair, IDEA Committee
Steven P. Metzger, Co-Chair, IDEA Committee
Essie Calhoun McDavid, At Large
Lisa Martinez DeVinney, At Large

TRUSTEES

Katie Baynes
Philip L. Burke
Margaret Busch
Essie Calhoun McDavid
Barbara de Leeuw
Lisa Martinez DeVinney
Hyacinth Hope Drummond
Bonnie Garner
Richard Gray
Lori B. Green
Christina Gullo*
James Haskins, *ex officio*
Jane C. Hasselkus
Tomás C. Hernández
Deborah L. Hughes
Abhas Kumar
Barbara J. LaVerdi
Dr. Dawn Lipson
Faheem Masood
Diane F. McCue
Steven P. Metzger
Miriam M. Moore

Robert Neale
Rhonda Noto
Shree Pandya
Tom Rogers
Jean Gordon Ryon
Laura J. Sadowski
Elaine Spaul
Elizabeth M. Teall
Mimi Tilton
Sam Tilton
Wynndy Turner
William F. Weir
John C. Williams
Elizabeth Williamson,
ex officio
Helen A. Zamboni

HONORARY TRUSTEES

Dennis Bassett*
Helen H. Berkeley*
Peggy Boucher
William A. Buckingham
Stephanie M. Caffera

Sergio Esteban*
David Fiedler*
Ronald H. Fielding
Betsy T. Friedman*
Patrick Fulford*
Joanna Grosodonia*
A. Thomas Hildebrandt
Maureen D. Holtzman
John F. Kraushaar*
Carol Love*
Peter Messner*
Michael B. Millard*
Emily Neece*
Nannette Nocon
David Perlman
John C. Rasor*
Robert Saltzman+
Paul Seidel
Maggie Symington*
Mary Kay Taber
Linda Cornell Weinstein*
Deborah Wilson

Trustees are volunteers and receive no compensation.

*Indicates Former Board Chair

+ Deceased

TICKETS

Tickets can be purchased online at GevaTheatre.org, or by phone at 585-232-4382.

Box Office Hours:

Performance Weeks:

Monday: CLOSED

Tuesday-Saturday: Noon-8:00PM

Sunday: Noon - 7:00pm

Non-performance Weeks:

Sunday & Monday: CLOSED

Tuesday-Saturday: Noon-6:00PM

GROUP RATES

Available for groups of 10 or more.

Call our Box Office at 585-232-4382, or email boxoffice@GevaTheatre.org for more information.

STUDENT RUSH TICKETS

Available from \$15 for all non-sold out performances, beginning 2 hours prior to curtain time. Students must present valid ID. One ticket per person.

What is your favorite Carole King song?

Growing up, my sister owned the *Tapestry* album, which was my first introduction to King's masterful songwriting. Could I pick a favorite from that album? My pre-teen self probably would have selected "You've Got a Friend." I've always loved a song with a bridge! What I didn't know about Carole King until much later was that she wrote so many incredible songs that she herself did not perform.

We are overjoyed to share her journey through song and story with our production of *Beautiful: The Carole King Musical*. Whether this musical has become a must-see favorite, or like me, you are experiencing the staged version of King's early life and career for the first time, I imagine you will be swept away by the power and nostalgia of the songs while engaging with one of the greatest books written for a jukebox musical by the late, great Douglas McGrath. Geva's Artistic Director Elizabeth Williamson was fortunate enough to work with Doug on one of his last projects, his adaptation of Edith Wharton's *The Age of Innocence* in 2019, and we're so happy to share his work with you today.

Geva Theatre has partnered with Pioneer Theatre in Salt Lake City to bring this stunning production to our stage under the direction of Pioneer's Artistic Director Karen Azenberg. In our current environment, we are grateful for the collaborative relationships we have built with our colleagues across the country to bring extraordinary productions to communities at multiple theatres. Recently, our audiences have enjoyed *Dial M for Murder*, *The Color Purple*, and *Young Frankenstein* because of our co-producing relationships with theatres across the country. Next season, we look forward to opening with *The Play That Goes Wrong* in a co-production with Indiana Repertory Theatre. The collaborative spirit that we have nurtured with our national colleagues, particularly post-pandemic shutdown, is essential in modeling our seasons and ensuring a sustainable future for live theatre.

With deepest gratitude to Season Sponsor ESL Federal Credit Union, Honorary Season Producer Dr. Dawn Lipson, Lead Producers Buckingham Properties, Executive Producers Sam & Mimi Tilton, Nixon Peabody, and Harter Secrest & Emery LLP, Media Sponsors News 10 NBC and 98.9 The Buzz, and our official vehicle sponsor Vision Auto Group, we welcome you to *Beautiful: The Carole King Musical*.

I feel the earth move!



James Haskins
Executive Director



GIVE NEW MEANING TO WHAT TRULY MATTERS.

At ESL, we believe in the worth of our collective strength — to uplift the whole community and help you thrive where you belong.

ESL is proud to support **Geva Theatre** because creativity connects us all.

J.J. ESL CUSTOMER
Beechwood
Neighborhood



esl.org/you-belong

Membership subject to eligibility. ESL is a registered service mark of ESL Federal Credit Union.



Join us at Geva's Bar
and café, featuring
The Kitchen!



VIEW THE FULL MENU!

*The bar and café are always open at
least 2 hours ahead of performances.
Visit GevaTheatre.org for full details.*



ACTING



DESIGN/TECH



GEVA THEATRE
PROFESSIONAL INTERNSHIPS



THEATRE BROCKPORT

INTENSIVE THEATRE EXPERIENCE
IN A LIBERAL ARTS ENVIRONMENT



Department of
Theatre & Music Studies
SUNY BROCKPORT



THEATRE BROCKPORT
CONTACT: (585) 395-2478 | theatre@brockport.edu

PRODUCTION CREDITS

ELIZABETH WILLIAMSON
Artistic Director

Geva
THEATRE

JAMES HASKINS
Executive Director

BEAUTIFUL The Carole King Musical

Book by
DOUGLAS MCGRATH

Words and Music by
GERRY GOFFIN & CAROLE KING BARRY MANN & CYNTHIA WEIL

Music by Arrangement with
SONY MUSIC PUBLISHING

Orchestrations, Vocal and Incidental Music Arrangements
STEVE SIDWELL

Additional Music Arrangements by
JASON HOWLAND

Directed by **KAREN AZENBERG[†]**
Choreography by **GERRY MCINTYRE[†]**
Music Direction by **HELEN GREGORY**

Scenic Design
JASON SIMMS[†]

Costume Design
KARA HARMON[†]

Lighting Design
DAWN CHIANG[†]

Sound Design
AARON HUBBARD[†]

Wig, Hair, & Makeup Design
KATE CASALINO

Casting Director
GEOFF JOSSELSO, CSA

Production Stage Manager
JAMES O. HANSEN^{*}

Assistant Stage Managers
KEVIN GREGORY DWYER^{*}
JULIA BREGY^{*}

Associate Producer
JASMINE B. GUNTER[†]

Production Manager
JOSEPH BIAGINI

General Manager
THALIA SCHRAMM

Geva Theatre presents *Beautiful: the Carole King Musical* with
Pioneer Theatre Company Artistic Director **KAREN AZENBERG**, Managing Director **ADRIAN BUDHU**

Originally Produced on Broadway by
PAUL BLAKE SONY MUSIC PUBLISHING MIKE BOSNER

BEAUTIFUL is presented through special arrangement with Music Theatre International (MTI).
All authorized performance materials are also supplied by MTI.
www.mtishows.com



Geva is a proud partner of  in the Geva-Brockport Alliance.

A Spanish-language version of this program is available at the Box Office and online at GevaTheatre.org.
Translator: Marisol Galarza-Ruiz

PRODUCTION CREDITS

THE CAST

(In order of appearance)

Carole King.....	Samantha Gershman*
Genie Klein.....	Mary Fanning Driggs*
Betty.....	Cassie Murphy
Neil Sedaka.....	William Spinnato*
Lucille.....	Kaitlyn Dubeau
Don Kirshner.....	Aaron R. Duclos
Gerry Goffin.....	Anthony Sagaria*
The Drifters.....	Travis Keith Battle*, Chris Richie*, Nathan Andrew Riley*
Cynthia Weil.....	Lee Harrington*
Barry Mann.....	Stephen Christopher Anthony*
The Shirelles.....	Hannah Camille Hall, Grace Ellis Solomon*, Elexis Morton*, Tyler Symone*
Janelle Woods.....	Elexis Morton*
Little Eva.....	Grace Ellis Solomon*
The Righteous Brothers.....	Hayden Singer, William Spinnato*
"One Fine Day" Backup Singers.....	Hannah Camille Hall, Grace Ellis Solomon*, Tyler Symone*
Nick.....	William Spinnato*
Marilyn Wald.....	Madeline Downey
"Uptown" Singer.....	Tyler Symone*
Lou Adler.....	William Spinnato*
Ensemble.....	Travis Keith Battle*, Jalen Dalton, Madeline Downey, Kaitlyn Dubeau, Hannah Camille Hall, Tyrick Wiltez Jones*, Taylor Morant, Elexis Morton*, Cassie Murphy, Chris Richie*, Nathan Andrew Riley*, Hayden Singer, Grace Ellis Solomon*, William Spinnato*, Tyler Symone*
Swings.....	Isabel Hartzell, Joseph Rafael Davila

UNDERSTUDIES

For The Drifters: Jalen Dalton; For Carole King: Kaitlyn Dubeau;
For Genie Klein: Kaitlyn Dubeau; For Cynthia Weil: Cassie Murphy;
For The Shirelles: Taylor Morant; For Janel Woods: Taylor Morant;
For Gerry Goffin: William Spinnato*; For Little Eva: Tyler Symone*

ADDITIONAL CREDITS

Substitute Stage Manager.....	Shannon Toot*
Dance Captain.....	Tyrick Wiltez Jones*
Rehearsal Accompanists.....	Julie Covach, Sean Michael Flowers
Open Captioner.....	Samantha Geffen
Sign Interpretation Coordinator.....	Luane Davis Haggerty, Ph.D.
Director of Artistic Sign Language.....	Darian Slattery
Sign Interpreters.....	Samantha Geffen, Nancy Kikendall
Audio Descriptor Program Coordinator and Consultant.....	Rene Latorre
Audio Descriptor.....	Dave Baxter
Audio Engineer.....	Emjay Mullin

A special thank you to Nazareth University for their generous provision of student housing.

This production will include one 15-minute intermission.

PRODUCTION CREDITS

ORCHESTRA

Conductor/Piano.....	Helen Gregory
Flute, Oboe, Alto Sax, Tenor Sax.....	Brad Batz
Flute, Clarinet, Tenor Sax, Baritone Sax.....	Mike Crumb
Trombones.....	Jake Everett
Trumpet, Flugelhorn.....	Doug Herrin
Guitar.....	Vinnie Ruggiero
Acoustic & Electric Bass.....	Schuyler Skuse
Drums & Percussion.....	Aaron Staebell

MUSICAL NUMBERS

ACT I

"So Far Away".....	Carole
"Oh Carol".....	Neil Sedaka
"1650 Broadway Medley".....	Ensemble
"It Might as Well Rain Until September".....	Carole
"Be-Bop-A-Lula".....	Demo Singer
"Some Kind of Wonderful".....	Carole, Gerry, and The Drifters
"Happy Days Are Here Again".....	Cynthia
"Take Good Care of My Baby".....	Gerry and Carole
"Who Put the Bomp".....	Barry
"Will You Love Me Tomorrow".....	Carole
"He's Sure the Boy I Love".....	Cynthia and Barry
"Will You Love Me Tomorrow".....	The Shirelles
"Up on the Roof".....	Gerry and The Drifters
"On Broadway".....	The Drifters
"The Locomotion".....	Little Eva and Ensemble
"You've Lost That Lovin' Feeling".....	Barry and The Righteous Brothers
"One Fine Day".....	Janelle, Backup Singers, and Carole

ACT II

"Chains".....	Carole and Backup Singers
"Walking in the Rain".....	Barry and Cynthia
"Pleasant Valley Sunday".....	Marilyn Wald, Gerry, and Company
"We Gotta Get Out of This Place".....	Barry
"Will You Love Me Tomorrow (Reprise)".....	Carole
"Uptown".....	"Uptown" Singer and Backup Singers
"It's Too Late".....	Carole
"You've Got a Friend".....	Carole, Barry, Cynthia, and Don
"(You Make Me Feel Like) A Natural Woman".....	Carole and Backup Singers
"Beautiful".....	Carole and Company
"I Feel the Earth Move".....	Carole and Company



*Members of Actors' Equity Association, the Union of Professional Actors and Stage Managers in the United States.



†Indicates members of the Stage Directors and Choreographers Society, an independent national labor union.



†The scenic, costume, lighting and sound designers in LORT Theatres are represented by the United Scenic Artists, Local USA-829 of the IATSE.



Geva Theatre operates under agreements between the League of Resident Theatres (LORT), a consortium of regional theatres throughout the nation; Actors Equity Association (AEA), the union of professional actors and stage managers in the United States; the Stage Directors and Choreographers Society (SDC), an independent national labor union; and United Scenic Artists (USA), a union of scenic, costume, lighting and sound designers.



Geva Theatre is a member of Theatre Communications Group (TCG), the national service organization for the American Theatre.



Please note that the taking of photographs or use of recording devices during the performance is not permitted. Cell phones and all other electronic devices are strictly prohibited in the theatre.

Connectivity at Geva Theatre's overarching objective is to connect more people and organizations with the art presented on its stages. To build more connected relationships with existing patrons and partners. To build new and meaningful relationships with people and organizations with whom we have traditionally had no or little connectivity, the sticky kind of connectivity that endures.

Connectivity at Geva programs are sponsored, in part, by Volvo Cars Rochester.

Geva *Insights*

Geva *Insights* Event for Beautiful:

TUESDAY, JUNE 10 Post-6pm Performance



**Derrick
Lucas**

Geva *Insights* will be with Derrick Lucas, host of *The Spectrum* on Jazz90.1, on Tuesday, June 10 following the 6pm performance – Fiona Kyle, Geva's Literary Manager and Artistic Associate, will be moderating a conversation about Carole King's impact on popular music, starting from her songwriting partnership with Gerry Goffin, which gave us iconic songs such as "Will You Still Love Me Tomorrow," made popular by The Shirelles, to her groundbreaking debut album *Tapestry*, and beyond.

Mondays at Geva

The stages are dark on Monday evenings at Geva, so the art and action shift to the lobby and café where brilliant local visual artists, performers, musicians, and speakers broaden our consideration of the onstage productions. Geva Theatre invites the community to join us for a free series of art openings and to party for a couple of hours each month!

**Learn more
about our Mondays
at Geva events**



A NOTE FROM THE PLAYWRIGHT

Douglas McGrath was a writer, director, and actor, whose work ranged from writing for *Saturday Night Live*, adapting *The Age of Innocence* for the stage, and appearing as a recurring role in HBO's *Girls*. He sadly passed in 2022 while in performances for his solo show *Everything's Fine* in New York City. We're proud to honor the legacy of a consummate artist by co-producing *Beautiful: the Carole King Musical* with Pioneer Theatre Company.

A Note from the Playwright

By Douglas McGrath



Walter McBride/Corbis/APImages

When Paul Blake, the producer of *Beautiful*, asked me if I wanted to write a Broadway musical about Carole King, her ex-husband and lyricist, Gerry Goffin, and their fellow songwriters, Barry Mann and Cynthia Weil, there was something I had to know before I could commit.

"Are they all alive?" I asked.

"Good news," Paul said. "They are."

Actually, that sounded like bad news. I had once worked on a screenplay about a real person whose vanity was so advanced that he would not let me portray him as anything less than thrillingly perfect. But audiences aren't interested in characters without flaws – even Achilles had that tendon trouble.

Paul kept after me, constantly telling me things that might entice me. He reminded me that the songwriters had had their offices at 1650 Broadway, one of the two buildings people mean when they refer to the legendary Brill Building sound. (The Brill Building was down the street at 1619 Broadway.) These buildings had once been the province of the classic American songwriters of the Tin Pan Alley age and then in the 50's became the place where kids came to create rock and roll. Maybe there was something in that clash, the old being ousted by the new? Carole and Barry and Cynthia were coming to New York to interview book writers. Paul said, "Come meet them. They're a lot of fun."

So I went and he was right, they were a lot of fun. I was so at ease. I told them my idea, and I could feel as I told it that it was right: a musical about kids chasing out the old guard so they could create the new sound of rock and roll. Carole's face lit up. I knew I had nailed it. She leaned forward to share her reaction.

"That," she said, "is completely wrong!"

"What?" I said, almost losing my balance even though I was seated.

"We *idolized* Gershwin and Porter and Kern and Berlin," she explained. "We *studied* their music –"

Cynthia piped in, "I wanted to *be* Cole Porter."

How surprising. As teenagers they changed the sound of popular music but they were

A NOTE FROM THE PLAYWRIGHT

traditionalists at heart – rock and rollers but classicists, too. Before the meeting, I had known only one thing about these songwriters: that they were talented. But now I saw that they were something not all talented people are: *they were interesting*.

And I knew what kind of show I wanted to write: not a fictional creation like *Mamma Mia* which used an original story with the ABBA catalogue, but the true story of these incredible people and how some of the greatest songs of the last century were created.

To do this, I interviewed the songwriters, separately, for many hours over many days. I asked them about everything in their lives – from birth on – because at the beginning I had no idea what the show would be. If you see the show, it seems inevitable now that it starts with Carole on her way into Manhattan to sell her first song and that it ends at Carnegie Hall with her celebrated concert as a solo artist, but when you are looking at four lives and some 70 years worth of memories, to get to the inevitable, you have to weed out a lot of the evitable.

After the interviews, I stared at my giant notebook, packed with hundreds of pages of their stories. One feeling hovered above everything: a feeling of friendship. These people had been friends for more than 50 years. It's one thing to be friends with old school chums but they were not school chums – they met as competitors in 1650 Broadway, vying for Don Kirshner's attention, racing each other up and down the Billboard chart, fighting for the best artists to sing their songs. And it was not a casual competition – they once took a vacation together just to make sure the other couple wasn't writing more than they were. It was often fierce.

And yet.

They loved each other, these four great artists, and they respected each other. They studied each other the way they studied Cole Porter and Irving Berlin. That was an interesting, even classic dynamic – competitors who loved each other. That sense of friendship pervaded even Carole and Gerry's relationship, which started as a romance, moved into and then out of marriage, finally settling into a forgiving and affectionate friendship.

That sense of kindness infuses much of Carole's music. Many of her listeners feel she is their friend, a feeling I suspect they do not have about other singers they may adore. They see themselves in her. Her music is marked by forgiveness, compassion and warmth. Even her breakup songs are tinged with understanding. The show had to mirror that.

So I began to see the story – it would be about music and friendship and love. There would be heartache in it, because the show is about life, but it would have hope in it, too.

Because their music is so good, I wanted to place the songs in a way that gave them their full emotional impact. This was harder than it might seem. You figure, if it's a good song, it'll be good wherever you put it. But that is not the case. I would not write a scene and then plop a song into it. I had to write the scene knowing which song it was going to be about. If a song didn't work, it was because the scene didn't work, and I would rewrite it until the song felt as though it were written just for that scene.

Everything came out of the music, which is the greatest guide to the thinking and feelings of the four songwriters. The theme of the show itself comes from a song. Early on, Carole says, "You know what's so funny about life? Sometimes it goes the way you want and sometimes it doesn't. And sometimes when it doesn't, you find something beautiful."

Love What You Hear



Hearing & Balance
CENTERS



Providing care for Hearing, Balance, Tinnitus, Hearing Devices
and Custom Hearing Protection for almost 50 years.

You're always seen by a Doctor of Audiology.

(585) 266-4130 | HartHearing.com



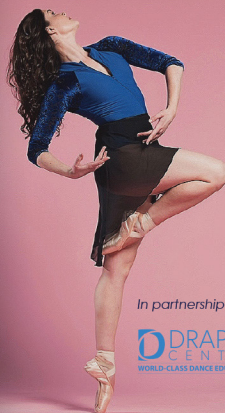
May 3-18
jcccenterstage.org

Cornell/Weinstein Family Foundation presents

An American in Paris

A New Musical

Music and Lyrics by George and Ira Gershwin
Book by Craig Lucas

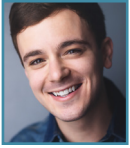


In partnership with



JCC Hart Theater | 1200 Edgewood Ave. Rochester, NY 14618

CAST

STEPHEN CHRISTOPHER ANTHONY (*Barry*

Mann) (he/him) Favorite roles include: *Dear Evan Hansen* (Evan, Broadway and First National Tour), *Catch Me If You Can* (Frank Jr, First National Tour), *Book of Mormon* (McKinley u/s, Broadway), *Legally Blonde* (Emmett, Actors' Playhouse) *Joseph... Dreamcoat* (Joseph, The Wick), *Beautiful* (Barry Mann, Pioneer, Forestburgh), *Forever Plaid* (Sparky, FL Rep), *State Fair* (Wayne, Wagon Wheel). Stephen is also a director, music director, and choreographer with credits including: *Waitress* (Actors' Playhouse), *Matilda* (YES Theatre), *Million Dollar Quartet* (Metropolis PAC), *Mass Extinction Squad* (Gene Frankel Theatre), *Pump Boys & Dinettes* (Post Playhouse). FSU MT grad. NWSA MT grad. Love to Michael, Augs, Nel Nel, family. IG: @_stephenanthony

TRAVIS KEITH BATTLE (*Drifter/Ensemble*) is

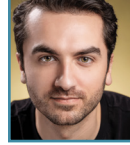
a Brooklyn-based performance artist who is making their Geva Theatre debut. They are a proud member of Actors' Equity and a graduate of Temple University's Musical Theatre program.

Favorite roles include Jimmy Early (*Dreamgirls*), Fleetwood (*The Life*), and Shakespeare (*Something Rotten*). In addition to working with numerous regional theatre's across the country, Travis has also performed internationally with Norwegian Cruise Lines and can be found crooning on cabaret stages throughout New York City. traviskeithbattle.com

JALEN DALTON (*Ensemble/U/S The Drifters*)

(he/him) is so excited to be a part of this production! Jalen is from Buffalo, NY. He just finished sophomore year at SUNY Fredonia where he will be receiving his BFA in Musical Theatre. Some of his favorite

credits include: Kyle in *Legally Blonde*, V.P Panch in *The 25th Annual Putnam County Spelling Bee*, TJ in *Sister Act*, and more! Jalen would like to thank his family, friends and professors for their endless love and support! Jalen's goal in life is to live free and spread love to all he can! @jalen.dalton.7

JOSEPH RAFAEL DAVILA (*Swing*) (he/him) is so

honored to be making his Geva debut! Regional credits: Jerry Mulligan in *An American in Paris* (JCC CenterStage), Barry Mann in *Beautiful* (JCC CenterStage), Harry Houdini in *Ragtime* (JCC CenterStage), Prince Herbert in *Spamalot* (Blackfriars Theater), Lefou in *Beauty and the Beast* (Pittsford Musicals). He has a BFA in Dance from the University at Buffalo, as well as an AAS in Histotechnology from SUNY Cobleskill. He would like to offer a special thank you to his parents, sisters, brother-in-laws, niece and nephews, and cat, Link, for their continuous love and support. None of this would be possible without family and faith in God. #sibuna

MADELINE DOWNEY (*Marilyn Wald/Ensemble*) (she/her) is thrilled

to be making her Geva Theatre debut! She is a rising junior in the BFA Musical Theatre program at Nazareth University. Recent/favorite credits include Elizabeth Proctor (*The Crucible*), Rusty (*Footloose*), Cinderella (*Into The Woods*), and Mary Poppins (*Mary Poppins*). She also enjoys acting in short films, choreographing for children's theatre, and working as a character performer! She wants to thank her family and Nicolette Hart for all of their support, and Brynne Wisner for being the best self-tape reader there ever was. IG: @maddie.downey12

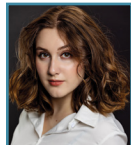
MARY FANNING DRIGGS (*Genie Klein*) (she/

her) is thrilled to make her Geva Theatre debut! Credits include: *Natasha, Pierre, & the Great Comet of 1812* (Marya Dmitryevna, accordion), *Bonnie and Clyde* (Cumie Barrow), *Elf* (Emily Hobbs), *Mamma Mia!*

(Rosie), *Sting's The Last Ship* (Regional Premiere), *Sweeney Todd*, *The 25th Annual Putnam County Spelling Bee* (Rona Lisa Peretti), *Irving Berlin's White Christmas* (Martha Watson), *Once* (Baruska, accordion), *The Music Man* (Mrs. Paroo), *Les Misérables* (Mme Thenardier), *42nd Street* (Maggie Jones), *Smokey Joe's Cafe* (Patti). Film: Hallmark's *The Holiday Stocking*, *Love Across Time*, *The Roads We Travel*. TV: upcoming series *Dusty Bluffs* and *The Contract*. Love to Dave, our six amazing kids and their equally amazing spouses, and our seven remarkable grandchildren. @marydriggs

WHO'S WHO

KAITLYN DUBEAU (*Lucille/Ensemble/U/S Carole King/U/S Genie Klein*)



(she/her) is so excited to be able to start her professional debut at Geva Theatre! She is a rising senior at Nazareth University where she studies Musical Theatre with a Dance minor.

She recently studied abroad in London for her fall semester and was able to work with so many incredible people. She is so grateful and thrilled to be given this opportunity to work with this amazing team, and to work on such a wonderful show! Her theatre credits include *Legally Blonde* (Vivienne), *Chicago* (Velma), *Newsies* (Medda Larkin), and *The Hunchback of Notre Dame* (Clopin).

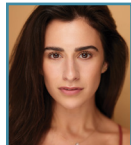
AARON R. DUCLOS (*Donny Kirshner*)



particularly excited, being a proud Rochesterian, to make his Geva debut. After graduating from NYU's Tisch School of the Arts, he employed the freedom afforded by his early service industry roots to travel,

work and live throughout the country while also acting, directing and teaching theatre arts and tap dance at every opportunity along the way. His most recent portrayals include Henry II (*The Lion in Winter*) and Brick (*Cat on a Hot Tin Roof*). Aaron is grateful for this opportunity to work with such an outstanding team and for the continual support from his wonderful family and friends. This performance is dedicated to mentor and local theater legend, Bob Sagan and to Jeffrey John, Aaron's lifelong angel.

SAMANTHA GERSHMAN (*Carole King*)



(she/her) Geva Theatre debut! Carole King has always played a significant role in Sam's life. She grew up listening to Carole King on repeat, dancing to "I Feel the Earth Move" in the kitchen with her mom and had many sing-

a-longs to the *Tapestry* album on road trips with her family! Needless to say, this musical holds such a special place in Sam's heart and she feels incredibly grateful for any chance she gets to tell Carole King's story and sing her iconic music. Broadway: *Water For Elephants* (Marlena standby), *A Beautiful Noise* (Swing). National Tours: *Jersey Boys* (Mary Delgado), *Jekyll & Hyde* (Lucy standby). Favorite regional credits: *Beautiful* (Carole King), *Evita* (Eva Perón), *A Chorus Line* (Diana Morales; Helen Hayes Winner*). Endless thanks to DGRW and her beautiful family. Dedicated to her dad.

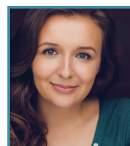
HANNAH CAMILLE HALL (*Shirelle/Ensemble*)



(she/her) is thrilled to be making her Geva Theatre debut! Originally from Columbus, Ohio, Hannah attended Kent State University, where she recently received her Bachelor of Fine Arts in Musical Theatre. Her

recent credits include *Beautiful: the Carole King Musical* at Pioneer Theatre Company, *Rent* at Kent State University, and *Little Shop of Horrors* at Porthouse Theatre. Hannah would like to thank her family and friends for their unwavering love and support! IG: @hannahc_hall Rep: Avalon Artists Group.

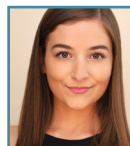
LEE HARRINGTON (*Cynthia Weil*)



(she/her) NY Theatre: *Assassins* (CSC), *A Man of No Importance* (CSC), *Into the Woods* (Roundabout), *Jellybean* (Iroindale Ensemble Project). Regional Theatre: *She Loves Me* (Gulfshore Playhouse), *A Christmas Story* (Lexington

Theatre Company), *Hi, My Name is Ben* (Goodspeed), *Connecticut Christmas Carol* (Goodspeed), *Show Boat* (Westchester), *Company* (Pittsburgh Public), *Merrily We Roll Along* (Cincinnati Playhouse), *Man of La Mancha* (Shakespeare Theatre). Film: *Where'd You Go*, *Bernadette*, *Last Flag Flying*. TV: *Gone*. Proud Tartan! @laharrington

ISABEL HARTZELL (*Swing*)



(she/her) is honored to return to Geva and her hometown of Rochester, NY with *Beautiful: the Carole King Musical*! She was last seen performing at Geva in *Jane Eyre*. Select credits: Luisa in *The Fantasticks* and Liesl in *The Sound of Music* at the

Candlelight Theater; Philoclea in *Head Over Heels* at Temple University; *Chess the Musical* at the 11th Hour Theater Co. Thank you to the entire team at Geva and all the love to her parents and sisters! IsabelHartzell.com @isabelhartzell on instagram

TYRICK WILTEZ JONES (*Dance Captain/Ensemble*)



(he/him) John Adams in *1776* at The Marriott Theatre in Chicagoland. Broadway/NY credits include: *Jagwire* in US Premiere of *Bat Out of Hell*, Howard in *Finian's Rainbow*, *Hairspray*.

Touring credits include: *Bat Out of Hell*, *Miss Saigon*, *Seussical*, *Fosse*, and *Show Boat*. Some Regional credits include: *Putting It Together*, *Ain't*

WHO'S WHO

Misbehavin', Stick Fly, Johnny Manhattan, Mom's Gift w/Cindy Williams, The Wiz, OOTI, Witness Uganda, From My Hometown (WILDE Award), and many others. Some Others: Grammy Awards 'Sam Smith Performance', New York City Center 'ENCORES!' *Finian's Rainbow* (Henry). Concert: PHISH 2011 New Year's Eve concert at Madison Square Garden, Mary Wilson of the Supremes Motown/Rock and Roll North America Tour. Some Film: *Fresh Kills, Back to Me*. Many Commercials and VOs. IG: @tyrickwjones LOVE

TAYLOR MORANT (*Ensemble/U/S Janelle Woods/U/S The Shirelles*)



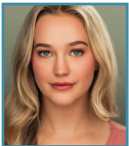
(she/her) is a New York-based actor. She just finished her sophomore year at SUNY Fredonia in hopes of receiving her BFA in Musical Theatre. Taylor is so excited to be making her professional debut in this production of *Beautiful: the Carole King Musical*! She could not be more grateful and honored!! Previous Credits Include: Ensemble/Judge in *Legally Blonde*, Rona/Mitch Swing in *The 25th Annual Putnam County Spelling Bee* and more! Taylor would like to thank her family, friends and professors for their endless love and support! @taylormadisynn

ELEXIS MORTON (*Shirelle/Janelle Woods/Ensemble*)



(she/her) is thrilled to be making her Geva Theatre debut! Last seen as Crystal in *Little Shop of Horrors* (Denver Center), her favorite credits include NYC: *Ragtime* on *Ellis Island*, *The Bad Years*, *Radio City Christmas Spectacular*. Regional: *The Color Purple* (Denver Center), *Jubilee* (ASF), *Little Shop of Horrors* (ASF), *Trinity Rep*, *Arts Center of Coastal Carolina*, *Side By Side By Sondheim* (Northern Stage), *A Year With Frog and Toad* (Arden Theater Company), *Beautiful: the Carole King Musical* (Pioneer Theatre Co), and various roles at sea (Disney/Celebrity Cruise Lines). TV/Film: *Godfather of Harlem* (ABC/EPIC 2023). As always, thanks to Mom and Erin. For Ka. The Luedtke Agency. Elexismorton.com. @misslade_sings

CASSIE MURPHY (*Betty/Ensemble/U/S Cynthia Weil*)



(she/her) is excited to make her debut on the Geva stage! Recent Credits include Pamela in *Head Over Heels* and Ocean Rosenberg in *Ride the Cyclone* at Nazareth University where she graduated in May with her BFA in Musical Theatre. She wants

to thank the cast, crew, and creative team for their hard work, and her family for supporting her endlessly. She hopes you enjoy this beautiful show! @cassie.e.murphy, cassiemurphy.net

CHRIS RICHIE (*Drifter/Ensemble*)



(he/him) is a New York based performer who is thrilled to be making his Geva debut. He is a 2022 Musical Theatre graduate of Oklahoma City University. Select credits: *Beautiful: the Carole King Musical* (NSMT), *Titanic*, *Carousel*, *Masterclass*, *Kinky Boots*, and *Jersey Boys* (IIOK). Chris was awarded 1st Place Winner of the American Pops Orchestra NextGen National: Finding the Voices of Tomorrow Competition and performed on the Lincoln Center stage in New York City. He also competed in the Playbill and Prudential's Stages on Broadway Contest where he placed Second Runner-up and performed in Times Square in New York City! He was also a 2025 Lotte Lenya Vocal Competition Semifinalist. Huge shoutout to his friends, family, and his awesome agency (DGRW). IG: e_chris_richie_

NATHAN ANDREW RILEY (*Drifter/Ensemble*)



(he/him) is excited to make his Geva Theatre debut in one of his favorite shows! Favorite credits include: *Disney's The Lion King* (National Tour); *Beautiful: the Carole King Musical* (1st & 2nd National Tours); *Love Life*, *High Button Shoes* (Encores! At New York City Center); *The Radio City Christmas Spectacular* (Radio City Music Hall); *The Color Purple* (Denver Center Theatre); *Ragtime*, *Addams Family*, *Waitress* (Broadway at Music Circus); *The Scottsboro Boys* (Phoenix Theatre Company). Love to mio inamorato MK!

ANTHONY SAGARIA (*Gerry Goffin*)

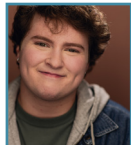


(he/him) is thrilled to be at Geva for the first time! He performed on Broadway in *Disney's Frozen* and was an original cast member in *American Psycho*. He traveled the United States in the National Tour of *Wicked* and *Disney Princess: The Concert*, as well as starring Off-Broadway as Jim Naismith in *The Perfect Game*. Other select favorite performances include *Kinky Boots* (The Muny), *The Bad Years*, *Murder Ballad*, *Mamma Mia*, and *Into the Woods*. You can catch him on-screen in *Orange is the New Black*, *Madam Secretary*, directed by Morgan

WHO'S WHO

Freeman and *Dead Sound*. A huge thanks to the dream team at DGRW, my family, Geoff, Matt, and Catherine. Follow along or coach with me @Anthony_Sagaria.

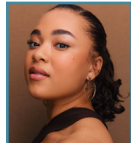
HAYDEN SINGER (*Righteous Brother/Ensemble*)



(he/him) Hayden Singer (yes, that's his last name!) is so incredibly thrilled to be making his professional debut in *Beautiful* at Geva Theatre! Hayden is originally from Southwest Florida but now is

going into his fourth year as a musical theatre BFA student at Nazareth University here in Rochester. Some past credits include: *Dametas/Head Over Heels*, *Nick Bottom/Something Rotten*, and *Herman/Cabaret*. Hayden would like to thank his dad, brother, girlfriend and friends for all of their love and support. Instagram: @hayden_singer03

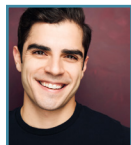
GRACE ELLIS SOLOMON (*Little Eva/Shirelle/Ensemble*)



(she/her) is thrilled to be performing at Geva! Regional highlights: *A Bronx Tale* (Jane), *Into The Woods* (Little Red Riding Hood), *Beautiful: the Carole King Musical* (Little Eva), *A Christmas Carol* (Ghost of Christmas

Past), *Alice In Wonderland: A New Musical* (Alice Liddell), *Marvelous Wonderettes* (Suzy). Many thanks to Mom, Grammy + Popdaddy, and Lola! Socials: @thegraceellis & thegraceellis.com

WILLIAM SPINNATO (*Lou Adler/Righteous Brother/Nick/Neil Sedaka/Ensemble/U/S Gerry Goffin*)



(he/him) is a NYC based actor originally from Baltimore, MD making his Geva debut! Favorite credits include *Jersey Boys* (Nick Massi) on NCL at Weston Theatre

Company and Totem Pole Playhouse, *Aladdin* (Aladdin) on DCL and Production Stage Manager of *Dogman the Musical* at New World Stages. NYU Steinhardt Grad. Thanks to Karen and Gerry for this opportunity and to everyone here at Geva. Love and gratitude to his Family, Friends and his wife Ariel. IG @DJWillySpinnz

TYLER SYMONE (*Shirelle/Ensemble/U/S Little Eva*)



(she/her) is an NYC-based artist who is thrilled to be making her Geva Theatre debut doing the second leg of this stunning production! Select Credits: *Beautiful* (Shrielle), *The Music Man* (Marian Paroo),

Caroline, Or Change (The Moon & The Washer), *Beehive* (Aretha), *Cinderella* (Marie), *Sister Act* (Deloris Van Cartier), *Xanadu* (Kira). You can find out more about Tyler at tylersymone.com. Love always to her wonderful friends, family, and Josh for their support. Repped by Barry Carson Kolker Ltd. IG/TikTok: @TheTylerSymone

CREATIVE & ARTISTIC TEAM

DOUGLAS MCGRATH (*Book*) was a filmmaker and playwright. He directed the HBO documentary *Becoming Mike Nichols*. He collaborated with Woody Allen on the screenplay for *Bullets Over Broadway*, for which they were nominated for an Academy Award. He wrote and directed the Oscar-winning *Emma* from the Jane Austen novel; *Company Man*; *Charles Dickens's Nicholas Nickleby*, which won the Best Ensemble Cast from the National Board of Review; *Infamous*; and the HBO documentary, *His Way*, nominated for an Emmy for Outstanding Nonfiction Special. His play *Checkers* opened the 30th anniversary season of New York's acclaimed Vineyard Theatre. His book for *Beautiful: The Carole King Musical* was nominated for Tony, Drama Desk, and Outer Critics Circle awards. He began his career as a writer for *Saturday Night Live* in what was incontestably the worst year in the show's history. He wrote essays on the arts and politics for the *New Republic*, the *New Yorker*, *The Nation*, *The New York Times* and *Vanity Fair*. Douglas McGrath passed away on November 4, 2022.

GERRY GOFFIN (*Words and Music*) Born in Brooklyn in 1939, Gerry Goffin met Carole King at Queens College, and their musical collaboration began almost immediately. They married in 1959, and that same year wrote their first hit song "Will You Love Me Tomorrow?" (The Shirelles). The duo penned more than 50 Top-40 hits including "The Locomotion," "Natural Woman," and "Up on the Roof." In 1987, Goffin and King were inducted into the Songwriters Hall of Fame, and the Rock and Roll Hall of Fame in 1990. Goffin has left an indelible mark on American music.

CAROLE KING (*Words and Music*) Pop music would be very different without the contributions of Carole King, who at age 17 wrote her first #1 hit with Gerry Goffin, "Will You Love Me Tomorrow?" for The Shirelles. The dozens of chart hits Goffin and King wrote during this period became legendary, but it was 1971's *Tapestry* that took King to the pinnacle, speaking personally to her

contemporaries and providing a spiritual musical backdrop to the decade. More than 400 of her compositions have been recorded by over 1,000 artists, resulting in 100 hit singles and six Grammys.

BARRY MANN (Words and Music) has written the melodies of some of the most influential pop songs in musical history. In addition to "You've Lost That Lovin' Feeling," the most-played song of the last century, and the songs heard in *Beautiful*, he composed later standards like "Somewhere Out There" (winner of two Grammys), "Here You Come Again," "Sometimes When We Touch," "Just Once," and "Don't Know Much." Together he and Cynthia Weil have amassed an incredible 112 pop, country, and R&B awards from Broadcast Music Inc. for significant radio airplay. He has been inducted into both the Songwriters Hall of Fame and the Rock and Roll Hall of Fame.

CYNTHIA WEIL (Words and Music) was the acclaimed lyricist of classic songs such as "You've Lost That Lovin' Feeling," the most-played song of the 20th century. In addition to the songs heard in *Beautiful*, she set the words to later standards including "Somewhere Out There," "Here You Come Again," "He's So Shy," "Just Once," and "Don't Know Much," to name just a few. Weil was inducted into the Songwriters Hall of Fame, the Rock and Roll Hall of Fame, honored with multiple Grammy nominations and two Grammy awards for "Somewhere Out There" as the Motion Pictures Song of the Year and Song of the Year. Weil passed away on June 1, 2023.

SONY/ATV MUSIC PUBLISHING, established in 1995 as a joint venture between Sony and Michael Jackson, is the world's leading music publisher. Sony owns or administers more than two million copyrights, including those from such iconic music catalogs as EMI Music Publishing, Leiber & Stoller, Mijac Music, Motown and Famous Music. Sony controls many of the best-known songs ever written, including "New York, New York," "All You Need Is Love," "You've Got a Friend," "Ain't No Mountain High Enough," "Over the Rainbow," and "Stand By Me." In addition, Sony represents the copyrights of such legendary artists as The Beatles, Leonard Cohen, Neil Diamond, Bob Dylan, Michael Jackson, Carole King, Joni Mitchell, Queen, The Rolling Stones, Sting, The Supremes, Hank Williams and Stevie Wonder, among others. Its ever-growing list of chart-topping artists and songwriters includes Alicia Keys, Lady Gaga, P!nk, Shakira, and Taylor Swift.

KAREN AZENBERG (Director) This marks Karen Azenberg's 13th season as Artistic Director at PTC. Favorite projects include last season's *Natasha, Pierre & the Great Comet of 1812* and *The Lehman Trilogy*, as well as the world premiere of *Alabama Story*, the regional premiere of Sting's *The Last Ship*, and *Newsies, The Play That Goes Wrong*, and *The Rocky Horror Show*. Originally from New York, her work there includes *Lyrics and Lyricists* (92nd St. Y), *Blocks* (a collaboration with Jonathan Larson) *Prom Queens Unchained*, and choreography for Richard Greenberg's *The Dazzle* (Roundabout Theatre Company). Among her other credits are over 15 productions of *West Side Story* and she has worked with Indiana Repertory Theatre, Geva Theatre, Alabama Shakespeare Festival, Goodspeed, Theatre Aspen, and Utah Shakespeare Festival. Karen is a past president of the Stage Directors and Choreographers Society (SDC) and is a proud Mom to Alexander and Emelia.

HELEN GREGORY (Music Director) To the village that made this show possible - directors, cast, staff, crew and the musicians that bring this score to life - thank you. Credits include: Pioneer Theatre Company, NY Theatre Workshop, The Vineyard, Public Theatre, LaMama E.T.C., Maltz Jupiter Theatre (received 11 Carbonell nominations, Winner - *Crazy for You*), Asolo Repertory Theatre (Winner *Sarasota Magazine Theatre Awards Best Musical Direction - Barnum*), Arkansas Repertory, Utah Shakespeare Festival, The Goodman Theatre, Riverside Theatre, Papermill Playhouse, Human Race Theatre, Lean Ensemble, and The Hangar Theatre. National tours: *Grease, Oklahoma!*, and *Joseph...* Industrials: American Movie Classics and "Star Odyssey" (Las Vegas). This is Helen's first show at Geva: thanks for having me!

GERRY MCINTYRE (Choreographer) (he/him) recently directed and choreographed *Young Frankenstein* for Berkshire Theatre Group, Bay Street Theater, and Geva Theatre. He won widespread acclaim for choreographing the Berkshire Theatre Group's production of *Godspell*. Off-Broadway: *Hallelujah Baby, Anything Can Happen in the Theatre, Forbidden Broadway, The Goodbye Girl, Lucky Stiff*, and the international hit *Spamilton*. Regional Theatre: *Nina Simone: Four Women, Songs for a New World, A Chorus Line, White Christmas, Side by Side by Sondheim, The Who's Tommy, My Fair Lady* (Berkshire Theatre Group), *Laura Comstocks' Bag Punching Dog* (LA Weekly nomination for Best Choreography), *The Color Purple, Cinderella, Ragtime, The Wiz, Sunset Boulevard*, and *Jersey Boys* (Broadway Music Circus). *Priscilla: Queen of the Desert, 9 to 5*, and

WHO'S WHO

The Cher Show (Ogunquit Playhouse). *Once On This Island*, *Ain't Misbehavin'*, *Putting It Together* and *Bonnie & Clyde* (Pioneer Theatre Company). He is featured in the documentary *After the Storm*. GerryMcIntyre.net

JASON SIMMS (Scenic Design) (he/him) is thrilled to be making his Geva debut! Work in other regional theaters includes: Berkshire Theatre Group, Weston Playhouse, George St. Playhouse, Philadelphia Theatre Co., People's Light and Theatre (Philadelphia), Bristol Riverside Theatre (Bristol, PA), Denver Center for the Performing Arts, Chautauqua Theatre Co. (Chautauqua, NY), The Old Globe (San Diego), TheatreWorks (Silicon Valley), Two River Theatre Co. (Red Bank, NJ) and many others. NYC venues include The Public Theater, The Cherry Lane, 2nd Stage Uptown, Ensemble Studio Theatre, SoHo Playhouse, The Juilliard School and more. Jason is a professor of design in the Theatre Arts Department at the University of Iowa and obtained his M.F.A. in design from New York University.

KARA HARMON (Costume Design) (she/her) Off-Broadway: *The Great Privation*, Soho Rep; *Watch Night*, Perelman PAC, *Cullud Wattah*, Public Theater; *Lockdown*, Rattlestick Playwrights, *The Niceties*, Manhattan Theatre Club; *Dot*, Vineyard Theatre. Select Regional credits include: *The Other Americans*, Arena Stage; *The Penelopiad*, Goodman Theater; *The Three Musketeers*, OSF; *42nd Street*, Goodspeed Musicals (CT Critics Circle Outstanding Costume Design Award); *Choir Boy*, Steppenwolf; *Diary of a Wimpy Kid*, The Children's Theatre Company; *Cosi Fan Tutte*, Arizona Opera; *Hometown to the World*, Santa Fe Opera; *Shutter Sisters*, Old Globe; *Guys & Dolls*, Guthrie Theater; *The Wiz*, Ford's Theatre (Helen Hayes Award); *Barbecue*, Geffen Playhouse (NAACP Award). KaraHarmonDesign.com

DAWN CHIANG (Lighting Design) (she/her) Geva: *John Bull*, *Fences*, *Native Gardens*. Broadway: *Zoot Suit*, co-designer, *Tango Pasión*. Off-Broadway: Manhattan Theatre Club, Roundabout Theatre. Opera: Resident lighting designer, New York City Opera. Regional: Guthrie Theater, Mark Taper Forum, Oregon Shakespeare Festival, South Coast Repertory, Syracuse Stage, Trinity Repertory Company, and more. Awards: USITT Distinguished Achievement Award in Lighting Design and Technology, two Syracuse Area Live Theatre Awards, two Drama League Awards; Nominations: Maharam Design Award/American Theatre Wing, Los Angeles Drama Critics Circle Award, San Francisco Bay Area Theatre Critics Circle. Affiliations:

Mentor for Theater Development Fund's "Wendy Wasserstein Project" outreach program for New York City high school students.

AARON HUBBARD (Sound Design) has brought sound to life as a designer, mixer, and recording engineer for over 20 years. Notable projects include his work on *The Count of Monte Cristo* (Wildhorn, PTC - professional premiere), *Sweeney Todd* (Sondheim, Utah Symphony and Opera), and *Natasha, Pierre & the Great Comet of 1812* (Malloy, PTC).

KATE CASALINO (Wig, Hair, & Makeup Design) (she/her) is a New York City based Hair and Makeup Artist with credits including: *Back to the Future*, *Company*, *Some Like It Hot*, and *Funny Girl* (on Broadway), *The Marvelous Mrs. Maisel*, *White House Plumbers*, *Law & Order*; *Organized Crime* (TV), Pioneer Theatre, American Conservatory Theatre, Utah Opera, AVA in Philadelphia, and Florida Repertory Theatre (Regional Theater). She is thrilled to be making her Geva Theatre debut. This show is dedicated to Amanda French because she is the reason I am where I am today.

GEOFF JOSSELSO, CSA (Casting Director) Broadway: *Into the Woods* (Artios Award), *Sweeney Todd*, *Spamalot*, *The Velocity of Autumn*. Off-Broadway includes: *Cellino v. Barnes*, *Kinky Boots*, *Dracula: A Comedy of Terrors*, *Altar Boyz*, *Southern Comfort*, *Yank!* Select Regional and Off-Broadway Theatre companies: Alley Theatre, Arena Stage Asolo Rep, Baltimore Center Stage, The Civilians, Irish Repertory Theatre, Kennedy Center, Long Wharf Theatre, Old Globe, Oregon Shakespeare Festival, Paper Mill Playhouse, Pasadena Playhouse, Pittsburgh Public Theatre, Repertory Theatre of St. Louis, Seattle Repertory Theatre, Signature Theatre, South Coast Rep, Studio Theatre, Village Theatre, Woolly Mammoth Theatre, and the York Theatre Company. joss casting.com

JAMES O. HANSEN (Production Stage Manager) (he/him) is thrilled to be making his Geva debut with this *Beautiful* production! As the Resident Production Stage Manager at Pioneer Theatre Company, recent credits include: *Waitress*, *Beautiful*, *Prayer for the French Republic*, and *Natasha, Pierre & the Great Comet of 1812*. Previous credits include *Clue* (starring Sally Struthers) and *Joseph...Dreamcoat* (starring David Archuleta). James earned a Bachelor's Degree in Arts Management from Dean College. Special thanks to his Mom, Family, and Ostie for their love and support! DHH.

KEVIN GREGORY DWYER (*Assistant Stage Manager*) (he/him) Previously at Geva: *Pure Native*, *Nina Simone: Four Women*, *August Wilson's How I Learned What I Learned*, *Lady Day at Emerson's Bar and Grill*, *A Christmas Carol 2023*, and *FRIDA...A Self Portrait*. Regional: *Bandstand*, *Jersey Boys*, *A Chorus Line*, *EVITA* (The REV Theatre Co). National Tours: *The Book of Mormon*. Chicago: *An American in Paris*, Disney and Cameron Macintosh's *Mary Poppins*, *The Color Purple*, *Matilda*, *Mamma Mia!*, Disney's *Beauty and the Beast*, and *Little Shop of Horrors* (Drury Lane Theatre); *Macbeth*, *Q Brothers Christmas Carol*, *Madagascar*, *King Charles III*, and *Othello* (Chicago Shakespeare Theater); *This Is Our Youth* and *Lord of the Flies* (Steppenwolf Theatre Company). Proud AEA Member and Emerson College Alum.

JULIA BREGY (*Assistant Stage Manager*) (she/her) is thrilled to return back for her third season here at Geva. She would like to thank her family and friends for all of their support. New York: *DiscOasis NYC* (Constellation Immersive), *Proud Ladies* (James Williams Productions). Regional: *Young Frankenstein* (Geva Theatre), *Frida...A Self Portrait* (Geva Theatre), *Dial M for Murder* (Geva Theatre), *Russian Troll Farm* (Geva Theatre), *Measure for Measure* (Fiasco Theatre/Actors Theatre of Louisville), *Fun Home* (Speakeasy Boston), *Little Women* (Perseverance Theatre). International: *Little Mermaid* (Metta Theatre London/Underbelly Fringe Festival). *I Do Need Me & I'm Not a Bit Like a Clown* (Metta Theatre London). For her parents.

PIONEER THEATRE COMPANY (PTC) Founded in 1962 as the State Theatre of Utah, the award-winning PTC is Utah's premiere professional theatre company and a leading arts organization of the West. Led by Artistic Director Karen Azenberg and Managing Director Adrian Budhu, PTC presents world-class productions that celebrate diversity in culture and society, and serve as the connecting bridge between art and scholarship as an affiliate of the University of Utah. Notable productions include the regional premieres of *Les Misérables*, Sting's *The Last Ship*, and Frank Wildhorn's *The Count of Monte Cristo*, as well as the world premieres of *Shucked* (the first-ever Broadway tryout in Utah), *A Distinct Society* by Kareem Fahmy, *Alabama Story* by Kenneth Jones, *The Messenger* by Jeff Talbott, and *Ass* by Ellen Simon. For more information, visit PioneerTheatre.org.

ORCHESTRA

BRAD BATZ (*Flute, Oboe, Alto Sax, Tenor Sax*) M.M. in Performance of Multiple Woodwinds from NJCU, B.M. in Music Ed. from Nazareth, Studies in Jazz Composition at Eastman School of Music and doctoral studies in Liturgical Music at WCU and Woodwind Doubling at Shenandoah Conservatory. Brad is the Director of Jazz Studies at Nazareth University. 2022 saw him receive the "Teaching Excellence Award" and 2024 was awarded "Distinction In Teaching" award. He has performed with many of today's top Jazz artists as well as Broadway stars. He is an artist endorser of Behn Clarinet mouthpieces, Rigotti reeds, and Oleg saxophone products. This is Brad's second show at Geva, though subbed on others. He is an active woodwind doubler and jazz musician in the Tri-State area. He has toured The United States, Canada, Europe, and Japan.

MIKE CRUMB (*Flute, Clarinet, Tenor Sax, Baritone Sax*) (he/him) graduated from the Eastman School of Music where he studied saxophone with Dr. Ramon Ricker and music education. In addition to a five-decade performance career, including ten previous shows at Geva (*Young Frankenstein*, *Cinderella*, *Sister Act*, *A Funny Thing Happened on the Way to the Forum*, *Spamalot*, *25th Annual Putnam County Spelling Bee*, *Company*, *The Music Man*, *Cabaret*, and *Urinetown*), Mike was a music educator in the West Irondequoit school district before filling numerous administrative positions in the Spencerport school district including Superintendent of Schools. Mr. Crumb currently teaches for SUNY Brockport. Mike is thrilled and honored to be returning to Geva for this production of *Beautiful: the Carole King Musical*.

DOUG HERRIN (*Trumpet, Flugelhorn*) (he/him) My name is Doug Herrin and I am thrilled to be playing trumpet for *Beautiful: the Carole King Musical*. I recently finished my Bachelor's Degree in Trumpet Performance at the Eastman School of Music. I am an aspiring commercial/orchestral trumpet player looking at building a career out of sharing my music with the world! Other productions I have been a part of include: *Young Frankenstein*, *Sister Act the Musical*, *West Side Story*, and *Beauty and the Beast*.

JAKE EVERETT (*Trombones*) (he/him) is honored to be performing with Geva Theatre. He is a Rochester-based trombonist known for his versatility of style. Jake's musical experience spans pit orchestras, symphonies, jazz bands,

WHO'S WHO

and even drum corps. While serving as a Marine Corps Musician, he performed extensively across the U.S., Brazil, and Colombia as the trombone section leader and jazz soloist. After his enlistment, Jake began studying privately with Mark Kellogg (Eastman School of Music) and is enrolled at SUNY Geneseo. He works with the Victor High School marching arts programs and serves as both performer and instructor with the White Sabers Drum & Bugle Corps (DCI). As a member of Prime Time Brass and director of its smaller ensemble, Krewe de PTB, Jake brings vivacious enthusiasm to every performance.

SCHUYLER SKUSE (Acoustic & Electric Bass)

(he/him) is an electric and upright bass player hailing from Rochester, NY. He received his Bachelors of Music from The Hartt School in 2014 and continues to perform in musical productions throughout the greater Rochester area, the most recent being *An American in Paris* at the JCC CenterStage. When not performing in pits, he plays with bands Dangerbyrd, River Lynch & The Spiritmakers, and country artist Claudia Hoyser. Schuyler is an instrument technician for a classical instrument distributor based in Rochester. This is his second Geva production and is thrilled to be part of it!

AARON STAEBELL (Drums, Percussion)

(he/him) is a dedicated educator, performer, and composer, with a passion for inspiring the next generation of musicians. Currently serving as Assistant Professor of Jazz at Ithaca College and Visiting Lecturer of Drumset at Cornell University, he brings a wealth of experience from both the classroom and the stage. He has performed in many shows at Geva, including *In The Heights*, *Little Shop of Horrors*, *La Cage au Folies*, *Sister Act*, *Cinderella*, *Hair*, and more. He is excited to be back!

VINNIE RUGGIERO (Guitar)

(he/him) is delighted to return to Geva Theatre for the production of *Beautiful: the Carole King Musical*. Vinnie's previous experience at Geva includes *Quilters*, *Cabaret*, *Little Shop of Horrors*, *In the Heights*, *HAIR*, and *The Wizard of Oz*. He is a Rochester native and a graduate of Nazareth College and SUNY Oswego where he studied with Grammy Award winner Joe Jewel. Vinnie enjoys playing all styles of music and has performed with notables Randy Brecker, Eric Marienthal and Jon Faddis. Vinnie is active in the Rochester music scene and lives in Pittsford with his wife Katy.

STAFF LEADERSHIP

ELIZABETH WILLIAMSON (Artistic Director)



(she/her) joined Geva as Artistic Director in 2022, to launch the theatre's 50th Anniversary Season. An Obie Award-winning director, Williamson is known internationally for her work as a dramaturg, director, adapter,

and producer. Broadway: Matthew López' *The Inheritance* (Tony, Olivier, Critics Circle, Evening Standard, GLAAD, and Drama Desk Awards for Best Play, Outer Critics Circle Honoree), *A Gentleman's Guide to Love and Murder* (Tony Award for Best Musical), *Anastasia*. West End: *The Inheritance*. Off-Broadway: Sarah Gancher's *Russian Troll Farm*, Dan O'Brien's *The Body of an American*. Regional: About Face Theatre, ACT, the Alley, Cal Shakes, Court, Hartford Stage, the La Jolla Playhouse, Oregon Shakespeare Festival, Pioneer Theatre, Steppenwolf, Theatre de La Jeune Lune, TheaterWorks Hartford, TheatreSquared, the Westport Country Playhouse, Williamstown Theatre Festival. Williamson previously served as Associate Artistic Director and Literary Manager at Pioneer Theatre Company in Salt Lake City and as Associate Artistic Director and Director of New Play Development at Hartford Stage. She received a 2007 NEA Fellowship in Literary Translation and is a member of SDC and LMDA. Education: M.St., Oxford University; B.A., Bennington College; trained at the École Internationale de Théâtre Jacques Lecoq.

JAMES HASKINS (Executive Director)



(him) is honored to serve as Geva Theatre's Executive Director alongside Artistic Director Elizabeth Williamson, and Geva's Board and staff. Prior to coming to Geva, James served as Managing

Director of the Guthrie Theater in Minneapolis after having completed a twelve-year tenure as Managing Director of The Wilma Theater in Philadelphia in partnership with Artistic Director Blanka Zizka. James began his work in theater administration at Circle Repertory Company and went on to work with a variety of theaters in New York and Seattle, most notably the Seattle Group Theatre. Upon moving to Philadelphia, he first worked as Managing Director of InterAct Theatre Company, while

also serving on the Board of the Theatre Alliance of Greater Philadelphia as Chair of the Barrymore Awards Oversight Committee. He subsequently moved into the Executive Director position of the Theatre Alliance before joining the Wilma. As a theater artist, James acted in many productions before turning to theater administration and is most proud of his directorial and dramaturgical work on the plays of his husband Michael Whistler. James holds an MFA from the University of Washington and a BA from The College of Wooster in Ohio, where he previously served on the alumni board. Following the pandemic shutdown, James joined committees of the Minnesota Arts and Culture Coalition and the Professional Non-profit Theatre Coalition

to help build support and funding for arts and culture. In Philadelphia, he served on the Cultural Advisory Committee under former Mayor Michael Nutter, who officiated his wedding ceremony. James currently serves on the Board of the Rochester Downtown Development Corporation.

SONG CREDITS

"Be Bop a Lula" by Tex Davis and Gene Vincent. Sony/ATV Songs LLC (BMI) and Three Wise Boys Music LLC (BMI).

"Beautiful" by Carole King. Colgems-EMI Music Inc. (ASCAP).

"Chains" by Gerry Goffin and Carole King. Screen Gems-EMI Music (BMI).

"Happy Days are Here Again" by Milton Ager and Jack Yellen. EMI Robbins Catalog Inc. (ASCAP). Special lyrics by Douglas McGrath and Cynthia Weil.

"He's Sure the Boy I Love" by Barry Mann and Cynthia Weil. Screen Gems-EMI Music Inc. (BMI).

"I Go Ape" by Neil Sedaka and Howard Greenfield. Screen Gems-EMI Music Inc. (BMI) and Universal/BMG (BMI).

"It Might As Well Rain Until September" by Gerry Goffin and Carole King. Screen Hems-EMI Music Inc. (BMI).

"It's Too Late" by Carole King and Toni Stern. Colgems-EMI Music Inc. (ASCAP).

"Little Darlin'" by Maurice Williams. Cherio Corporation (BMI) 100%.

"The Locomotion" by Gerry Goffin and Carole King. Screen Gems-EMI Music Inc. (BMI).

"Love Potion #9" by Jerry Leiber and Mike Stoller. Sony/ATV Tunes LLC (ASCAP).

"Oh Carol" by Neil Sedaka and Howard Greenfield. Screen Gems-EMI Music Inc. (BMI) and Universal/BMG (BMI).

"On Broadway" by Barry Mann, Cynthia Weil, Jerry Leiber and Mike Stoller. Screen Gems-EMI Music Inc. (BMI).

"One Fine Day" by Gerry Goffin and Carole King. Screen Gems-EMI Music Inc. (BMI).

"Pleasant Valley Sunday" by Gerry Goffin and Carole King. Screen Gems-EMI Music Inc. (BMI).

"Poison Ivy" by Jerry Leiber and Mike Stoller. Sony/ATV Tunes LLC (ASCAP).

"So Far Away" by Carole King. Colgems-EMI Music Inc. (ASCAP).

"Some Kind of Wonderful" by Gerry Goffin and Carole King. Screen Gems-EMI Music Inc. (BMI).

"Splish Splash" by Bobby Darin and Jean Murray. EMI Unart Catalog Inc. (BMI), Trio Music Co. Inc. (BMI) and Alley Music Corp. (BMI).

"Stupid Cupid" by Neil Sedaka and Howard Greenfield. Screen Gems-EMI Music Inc. (BMI) and EMI Litigintude Music (BMI).

"Take Good Care of My Baby" by Gerry Goffin and Carole King. Screen Gems-EMI Music Inc. (BMI).

"There Goes My Baby" by Jerry Leiber, Mike Stoller, Ben King, George Treadwell and Lover Patterson. Sony/ATV Songs LLC (BMI).

"Up on the Roof" by Gerry Goffin and Carole King. Screen Gems-EMI Music Inc. (BMI).

"Walking in The Rain" by Barry Mann, Cynthia Weil, and Phil Spector. Screen Gems-EMI Music Inc. (BMI). EMI Blackwood Music Inc. obo Mother Bertha Music (BMI).

"We Gotta Get Out of This Place" by Barry Mann and Cynthia Weil. Screen Gems-EMI Music Inc. (BMI).

"Who Put the Bomp" by Barry Mann and Gerry Goffin. Screen Gems-EMI Music Inc. (BMI).

"Will You Love Me Tomorrow" by Gerry Goffin and Carole King. Screen Gems-EMI Music Inc. (BMI).

"Yakkety Yak" by Jerry Leiber and Mike Stoller. Sony/ATV Tunes LLC (ASCAP).

"(You Make Me Feel Like a) Natural Woman" by Gerry Goffin, Carole King and Gerlad Wexler. Screen Gems-EMI Music Inc. (BMI).

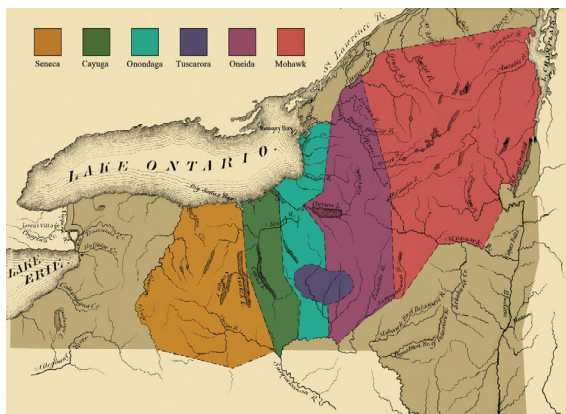
"You've Lost That Lovin' Feeling" by Barry Mann, Cynthia Weil and Phil Spector. Screen Gem-EMI Music Inc, (BMI), EMI Blackwood Music Inc. obo Mother Bertha Music (BMI).

ACKNOWLEDGING THE LAND

A land acknowledgement creates a more accurate picture of the history of the lands and waterways we call home and pays respect to the Indigenous People who have stewarded them from time immemorial. At Geva, we offer this statement as part of our anti-racist values and to help us all unlearn and relearn the history that has brought us here to the land we call the United States. With this understanding, we can envision a new path forward, led by the principles of equity and justice.

American society as it exists today owes its identity and vitality to generations from around the world who contributed their hopes, dreams and resources to making the history that led to this moment. Some were stolen and enslaved here against their will, some were drawn to leave their distant homes in search of a better life, and some have stewarded this land for more generations than can be counted. Acknowledging the hardships and atrocities that many peoples have suffered on American soil is critical to building mutual respect and connection across all barriers of heritage and difference. By honoring this truth, we begin this effort to acknowledge what has been purposefully buried.

There are 567 federally recognized Indian Nations (variously called tribes, nations, bands, pueblos, communities and Native villages) in the United States. Additionally, there are tribes located throughout the United States who are recognized by their respective state governments.



Graphic by Eric E. Doxtator

Geva's Acknowledgment

We are gathered in the ancestral and unceded territory of the Onöndowa'ga, or "the people of the Great Hill." In English, they are known as Seneca people, "the keeper of the western door." Together, with the Mohawk, Cayuga, Onondaga, Oneida, and Tuscarora, the Seneca make up the sovereign Haudenosaunee Confederacy. We pay respects to their elders, past and present. Please take a moment to consider the many legacies of violence, displacement, genocide and migration that bring us together here today. And please join us in uncovering such truths at any and all public events.

To learn more about the Native people in our region and the Canandaigua Treaty of 1794, visit ganondagan.org.

ABOUT GEVA THEATRE

Geva Theatre is a not-for-profit theatre company dedicated to creating and producing singular theatre productions and programs that serve the Rochester region and beyond, by illuminating the fullness of our many human experiences.

Founded in 1972 by William Selden and Cynthia Mason Selden, Geva was originally housed in the Rochester Business Institute building on South Clinton Avenue. In 1982, Geva purchased and converted its current space - formerly a NYS Arsenal designed by noted Rochester architect Andrew J Warner and built in 1868 - and opened its new home at the Richard Pine Theatre in March 1985. Geva operates two venues - the 516-seat Elaine P. Wilson Stage, and the 180-seat Ron & Donna Fielding Stage.

As one of the country's leading theatre companies and a member of the national League of Resident Theatres, Geva produces a varied contemporary repertoire from musicals to world premieres celebrating the rich tapestry of our diverse community. We draw upon the talents of some of the country's top actors, directors, designers, and writers who are shaping the American Theatre scene.

Geva's Education Department serves thousands of students annually through student matinees, in-school workshops, the acclaimed Summer Academy training program, and other programs. Geva's New Play Development Programming offers new and established writers a nurturing environment from which to take their work to the next level. Geva has presented approximately 400 play readings and workshops since its inception. Nearly 70 Geva-developed plays have had subsequent productions around the country. Geva's Connectivity Department produces multifaceted programs such as *Geva Insights* that deepen the appreciation of the work on our stages, provide opportunities for regional dialogues, and help fulfill Geva's anti-racism commitments through collaborative programming.

An active member of the Rochester community, Geva offers a multitude of opportunities for our audience and community members to engage with live theatre and the country's best artists. Since the breadth of Geva's programming cannot be sustained on ticket sales alone, this contribution to the region's cultural, social and economic vitality is recognized by grants and charitable contributions from federal, state and local government agencies, national and local foundations, and businesses and individuals from throughout the region.

For more information: GevaTheatre.org.

Introducing

THE CLASSICS COMPANY

Mark Cuddy, Founding Artistic Director

intimate. passionate. human.



Hallagan
Furniture


DIANE PRINCE
FURNITURE
&
GIFTS

Give your home a fresh look.
FLOOR MODEL SALE
Now in progress!

92 S. Main St., Fairport
585.388.0060

dianeprincefurniture.com

PROGRAM BOOK PRODUCED BY

Buffalo Spree
Publishing, Inc.

PRESIDENT & CEO
Sharon Levite

VICE PRESIDENT/CHIEF REVENUE OFFICER

PUBLISHER
Barbara E. Macks

EXECUTIVE EDITOR
Meagan Walker Duxtad

MANAGING EDITOR
Donna Hoke

CREATIVE DIRECTOR
Jean-Pierre Thimot

ART & PRODUCTION

SENIOR GRAPHIC DESIGNERS
Joshua Flanigan | Kim Miers | Nicholas Vitello

GRAPHIC DESIGNERS
Rachel Kaznica | Taramarie Mitravich

TO ADVERTISE

buffalospree.com or call

716-972-2250

RESIDENT STAFF & ARTISTS

ELIZABETH WILLIAMSON (she/her)
Artistic Director

JAMES HASKINS (he/him)
Executive Director

STAFF LEADERSHIP

JOSEPH BIAGINI (he/him)
Production Manager

ERON DAMERCY (he/him)
Director of Connectivity

FRANK DEL VECCHIO (he/him)
Controller

JASMINE B. GUNTER (she/her)
*Resident Director/
Associate Producer*

SARAH HALEY (she/her)
Director of Marketing

GITANA MIROCHNIK (she/her)
Director of Development

THALIA SCHRAMM (she/her)
General Manager

DELANNA STUDI (she/her)
2024/2026 Artist in Residence

BARON VAUGHN (he/him)
2025/2026 Artist in Residence

ARTISTIC & MANAGEMENT

FIONA KYLE (she/her)
*Literary Manager
& Artistic Associate*

JILLIAN SAJDA (she/her)
Associate Company Manager

NICOLE STEIN (she/her)
Executive Assistant

AUDIENCE SERVICES

JOHN HAMOLSKY (he/him)
Senior Manager of Guest Services

TIM INTILI (he/him)
Director of Ticketing

NICOLETTE VENTIMIGLIA (she/her)
Bar Manager

ANDY GERMUGA (he/him)
Box Office Supervisor

CARLEA GRANT (they/them)
Assistant Guest Services Manager

NANETTE FALCHI (she/her)
Giftshop Services

ALEX BERARDI (he/him)

SAM KAPLAN (they/them)

HANNAH MORENO (she/her)

ASHLEY ROBB-CROCKETT (she/her)

BRENNAN SAUR (he/him)

MARLI WORDEN (she/her)
Box Office Associates

SUE BELLINGER (she/her)

CARLY CRESSMAN (she/they)

MARK DI NITTO (he/him)

JACE JACOBS (he/him)

House Managers

MICHAEL FAMBRO (she/her)

LILLY GALLATIN (she/her)

AUBREY REYNOLDS (she/her)

J. IAN REYNOLDS (he/him)

MARY REYNOLDS (she/her)

BELLE RIVERA (she/her)

BRIAR ROSE (she/her)

CHARLES WECKWORTH V (he/him)
Barenders

CONNECTIVITY

DEJA COTTON (she/her)
Connectivity Assistant - Education

ERITREA HAILE (she/her)
Connectivity Assistant - Engagement

MELISSA COYLE

JACK LANGERAK

BRIGITT MARKUSFELD

LEELA MUNSIF

JONATHAN NTHEKETHA

ANDREA PARADA

DELORES JACKSON RADNEY

MARY MÉNDEZ RIZZO

ELIANA ROWE

JEAN GORDON RYON

MJ SAVASTANO

TERRAN SCOTT

DAVID SHAKES

SHAWNDA URIE
(ONONDAGA, TURTLE CLAN)

PERRY GROUND,

KAE WOODRUFF WILBERT

ESTHER WINTER

MARC DAVID WRIGHT
Artist-Educators

SOFIA UBILLA (she/her)
Directing Fellow

COSTUMES

JENNIFER BAYANG (she/her)
Costume Shop Supervisor

MICHAELA LINCOLN (she/her)
Cutter/Draper

REBEKAH CLOW (she/her)
First Hand

SAMANTHA BURTON (she/her)
Costume Shop Assistant

PAIGE WALDRON (she/her)
Wardrobe Supervisor

DEVELOPMENT

SEAN BRITTON-MILLIGAN (he/they)
Event Manager

JUDITH LEMONCELLI (she/her)
Grants Manager

SARAH MAYFIELD (she/her)
Development Coordinator

FINANCE & OPERATIONS

ANNA BECK (she/her)
Finance Assistant

CLIFF LAMPLEY (he/him)
Facilities Manager

LAURIE MASOOD (she/her)
Finance Volunteer

LAMONT TITUS (he/him)
Environmental Services

LIGHTING

DEREK A. MADONIA (he/him)
Lighting Supervisor

CHRIS NIMICK (he/him)
Electrician/Light Board Programmer

ESTHER WILKINS (she/her)
Electrician

MARKETING

AMANDA RIEKSTINS (she/her)
Graphic Designer

KYLE OSENBACH (he/they)
Creative/Marketing Assistant

JUNE KINSELLA (she/her)
Media Buyer/Frontline Advertising

PRODUCTION

JARED LEE MORGAN (he/him)
Stage Operations Supervisor

JULIA BREGY (she/her)
Resident Stage Manager

KEVIN GREGORY DWYER (he/him)
Resident Stage Manager

NATE KELLY-DUMONT (he/they)
Crew Swing/Follow Spot Op

PROPERTIES

THERESA GRANGER (she/her)
Properties Supervisor

BUTCH KANE (he/him)
Properties Artisan

SHANNON SCALLY (she/her)
Interim Prop Supervisor

SCENIC ARTISTRY

ALEX STOEHR (he/him)
Scenic Charge Artist

GREY WARRICK (they/them)
Scenic Artist

SCENERY CONSTRUCTION

DAVID CROUSE (he/him)
Technical Director

ELIAS KOCH (he/him)
Lead Carpenter

SAM BURKOVICH (they/them)
Carpenter

V. MILLER (they/them)
Carpenter

HAZEL PENROSE (she/her)
Carpenter

SOUND

ANDREW MARK WILHELM (he/him)
Sound Supervisor

OVERHIRE

SOPHIE MCGUIRE (she/her)
Overhire A2

IAN AVERY
MEGHAN CLARK
KENNETH DEBOT
MICHELLE GARRETT
ANDREW LA FAVOR
Overhire Crew Swing

SIOBHAN C. HURLEY (she/her)
Overhire Spotlight Operator

CLAUDIA COONAN (she/her)
ERIN HOLT (she/her)
MARS MADISON (they/them)
Overhire Wardrobe Crew

AMANDA WALTER (she/her)
Overhire Wig Crew/Wardrobe Crew

MADDIE WINTER (she/her)
*Overhire Wig Supervisor/
Wardrobe Crew*

MARK CUDDY
Artistic Director Emeritus

CORPORATE, FOUNDATION & GOVERNMENT PARTNERS

*Geva Theatre gratefully acknowledges the following corporations, foundations and government agencies for their generous support.
(Donations listed are for the time period 4/1/24 to 4/1/25.)*

2024-2025 SEASON SPONSOR

ESL Federal Credit Union

2024-2025 SEASON HONORARY PRODUCER

Dr. Dawn Lipson

\$50,000+

7Crest Financial Partners, Ameriprise
Private Wealth Advisory Practice
William & Sheila Konar Foundation*
New York State Council on the Arts**
Nixon Peabody LLP
The Blanche & Irving Laurie Foundation
The Shubert Foundation

\$25,000- \$49,999

Arts & Culture (Vitality) Fund at the
Rochester Area Community
Foundation
Buckingham Properties, LLC
County of Monroe
The Davenport-Hatch Foundation
ESL Charitable Foundation
Mary S. Mulligan Charitable Trust**
New York State Division of Homeland
Security & Emergency Services
WXXI

\$10,000 - \$24,999

Daisy Marquis Jones Foundation
Donald F. & Maxine B. Davison
Foundation*
Glover-Crask Charitable Trust
Heveron & Company, CPAs, PLLC
KeyBank
McCarthy's Tents & Events
National Endowment for the Arts
The Riedman Foundation

Rubens Family Foundation*

Sinclair Broadcast Group
St. John's
Joseph & Irene Skalny Charitable Trust*
Vision Automotive Group
Volvo Cars Rochester
WARM 101.3 Radio
WHEC-TV, LLC

\$5,000 - \$9,999

3 City Center
iHeartMedia/Clear Channel
Broadcasting
The Joseph & Anna Gartner Foundation
M&T Bank
Madeline's Catering
Max A. Adler Charitable Foundation
RG&E***
Theatre Development Fund
- NSYCA/TDF TAP Plus
WDX FM

\$2,500 - \$4,999

Buffalo Spree Publishing, INC.
Center for Adolescent & Young Adult
Health
Cornell/Weinstein Family Foundation*
Crisp Rochester
GP Flooring
The Gouvernet Arts Fund at
the Community Foundation
Hildebrandt Family Artistic
Enhancement Fund
Labella Associates, P.C.
News 8 WROC-TV
Rockcastle Florist
Elaine P. and Richard U. Wilson
Foundation
WUHF-TV

\$1,000 - \$2,499

Actors' Equity Foundation
Airigami
Ames Amzalak Memorial Trust*
Audacy Operations, Inc.
Century Liquor & Wines
Entre Computer Services
Excellus BlueCross BlueShield
The Jane Parker Foundation
The Queenan Foundation
Sinclair Broadcast Group
Tito's Handmade Vodka
Wegmans Food Markets*
WHAM
WRMM-FM

\$500 - \$999

Joan & Harold Feinbloom
Supporting Foundation
Get Caked Bakery***
JAZZ 90.1
Marshall Partners
Rohrbach Brewing Co.
Vanguard Charitable Program
Waldron Rise Foundation

**Education Supporter*

***Literary or New Works Supporter*

****Home for the Holidays Supporter*

We have made every effort to ensure the accuracy of these donor lists. However, if you see an error or omission, please accept our apology, and kindly call the Development Office at (585) 420-2049.



COBBLESTONE
CAPITAL ADVISORS

- Investment Management
- Wealth Management
- Private Investments
- Family Office

(585) 473-3333

*Investment in securities may result in loss of income and/or principal.

ANNUAL FUND DONORS

*Geva Theatre thanks the following individuals for their generous contributions.
(Donations listed are for the time period 4/1/24 to 4/1/25.)*

LEADERSHIP CIRCLE

\$50,000+

Dr. Dawn Lipson
(Honorary Season Producer) †

\$10,000-\$49,999

Anonymous (2)
Barbara & John Bruning †
Patrick & Barbara Fulford †
David & Patricia Gardner †
Dr. Tomás C. Hernández*
& Dr. Keith S. Reas
Joe & Dale Klein
Barbara LaVerdi
& Bryan Donnelly †
Matthew López & Brandon Clarke
Nanci Malin & Abe Weiss
Diane & Jerry McCue
Elizabeth Rennert* †
Elise Rosenfeld
Eileen Amy Ryan
Mimi & Sam Tilton †
Krestie Utech †
Charis & Rich Warshof †
Joyce & William Weir

\$7,500-\$9,999

Anonymous
Bonnie Garner
Richard & Kim Gray
Joanna & Michael Grosodonia †
Warren+ & Joyce Heilbronner †
Averil & Michael Riley
Tom & Tammy Rogers
Vicki+ & Richard Schwartz †
Joan & Ken Slater
Helen A. Zamboni
& Steven I. Rosen †

\$5,000-\$4,999

Anonymous
Dennis & Mary Bassett
Peggy Boucher †
Philip & Sharon Burke
Margaret & Tim Busch
Betsy & John Carver †
Gloria Culver & Joe Anderson
Joan S. Dalberth
Bill Eggers & Deborah McLean
Dave & Nance Fiedler †
Joanne Giannini †
Norman Horton+
The Geva Group- 40 Years
Connie Klein
Glenn & Nancy Koch
Dan & Kiki Mahar
Michael & Frances Millard
Dan & Jo-Ann O'Brien †
Janet S. Reed
Maggie & Charlie Symington †
Susan & Robert Toussaent*

LEADERSHIP CIRCLE (cont.)

John S. Tritten
Janet M. Tyler †
Thomas & Ann Ward
Dr. Stephen R. Webb
Sherwin Weinstein
& Linda Cornell Weinstein* †

\$2,500 - \$4,999

Anonymous (2)
Daniel & Elizabeth Abbas
Jeanine Arden-Ort
& Dr. Daniel Ornt
Robert D. Baden †
Carol & John Bennett
Barbara Berman
Nelson A. Blish & Sharon Stiller
Robert & Diane Boni
Ed & Sarah Bullard
David J. & Margaret M. Burns
Essie Calhoun-McDavid
& Bernard McDavid
Center for Adolescent
& Young Adult Health
Barbara de Leeuw
Gary M. Domenico
& Barbara E. Buscaglia
Ann Dozier & Guy Martin
Hope Drummond
Peter Fackler & Kelly Barrett
Stan & Reenie Feingold
Richard & Joan Fenton*
Paul & Mary Fromm⁵
Ellen Garfinkel
Pam Giambrone †
Lori & Scott Green
Christina Gullo & John A. Mueller
Terry & Eileen Hartmann
James Haskins & Michael Whistler
Jane Hasselkus & Richard Edic
Nan & Tom Hildebrandt †
Jean Horton
Dr. Jack & Harriette Howitt
Emily Jones & Deborah Hughes
Hon. Joan S. Kohout
Paul & Lynne Kroner
Abhas Kumar
& Chetna Chandrakala
Harold & Christine Kurland †
Diane & Stephen LaLonde
Connie L. Leary
Jennifer Leonard
& David Cay Johnston
Edith M. Lord
Carol & Nick Love †
Sarah Mangelsdorf & Karl Rosengren
Annabelle Martin
Lisa Martinez DeVinney
Faheem & Laurie Masood
Pamela McGreevy
Peter & Beth Messner

Steve Metzger
Barbara Mitacek**
Robert Neale & Rick Portler
Rhonda Noto
Shree Pandya
Don & Robin Pulver
Dr. Gerald & Maxine Rosen
Laura J. Sadowski
Drs. Carl & OJ Sahler
Harold & Judy Samloff
Gary B. Schaefer
Dick Schieck & Joan Semrau
Wolf & Elizabeth Seka
Kelly & Kathleen Shea
Gail Shoemaker
Malcolm & Elaine Spaul
Franceen Elias-Stein & Todd Stein
James & Georgine Stenger
Judy & Richard Stiehler
Bob & Gayle Stiles
Jim & Pam Stoffel
Joshua Stubbe & Katie Baynes
Elizabeth M. Teall
Wynndy Turner
Nina Walker
Carol J. Whitbeck
John Williams
Elizabeth Williams
& Jennifer Tennant
Herb Winkelmann, Jr.

\$1,500 - \$2,499

Allan C. Anderson
Drs. Karen & Mark Blazey
Mary & Brendan Brady⁵
Keith & Celeste Cleary⁵
Carol Condem+
Susan & Frank Crego⁵
Doug & Stephanie Dickman
Mr. Raymond Dreher
& Dr. Elaine Tunaitis
Louise W. Epstein⁵
James & Kathy Farrar
Sue & Jim Hæfner
Nancy D. Hessler⁵
Daniel & Barbara Hoffman
In honor of Lisa Hoffman,
who loved her family
Victoria Kaminski
Wes & Mary Micket⁵
Nannette Nocon
& Karl Wessendorf †
William J. O'Connor Jr.⁵
John & Martha O'Connor
David & Marjorie Perlman
Elke Phillips⁵
Karen & Don Pryor
Dr. Ramon & Judith Ricker
Sharon & Leal Smith⁵
Dr. Sidney & Barbara Sobel †

ANNUAL FUND DONORS

Jacqueline Sperandio
Rev. Nancy D. Stevens
& Mr. David L. Williams⁵
Judy & Erik von Bucher
Benjamin & Saundra Wallace
John & Melanie Ward
Philip & Anne Wehrheim
Stephen Wershing
Charlotte J. Wright

\$1,000 - \$1,499

Anonymous
Pamela & Todd Allen
Jeanne M. Beecher
Suzanne Bell & Chris Brown
Eric & Marcia Birken
Michael & Elizabeth Burns
Mary Ellen Burris
Stephanie Caffera
Mary Allison Callaway
Catherine Callery & Michael Nazar
Paula & Christopher Carter
Katherine Cove⁵
Suzanne & Allan Chapman
John & Alison Currie
Ann & Steve Fox⁵
Bob & Bobbie Freitag
Richard Galvin
M. Lois Gauch
Don & Natalie George
The Gill Family Fund
George & Helen Greer Advised Fund
At The Community Foundation
Carl Grimm
Brigitte Gueldenpfennig
Joe & Linda Hanna⁵
Richard Hare
Elmer C. Hartman
H. Larry & Dorothy C. Humm
Ebets & Tom Judson⁵
Judy & Norm Karsten
Karen Kral
Marcy & Ray Kraus
Ellen Lewis
Amy Libenson & Brett Shulman
Patrick Macey & Jerry Casey
Bruce & Eleanor McLearn
Don & Roxann Muller
Dr. Gary & Ruth Myers⁵
Kathy & Ted Nixon
Lois & John Palomaki
Mary Jane Proschel
Marvin Ritzenthaler & Steven Jarose
Bea Rosenbloom
Anthony & Gloria Sciolino
Neal & Pam Sherman
Richard R. Spellacy
Richard & Sandy Stein
Sheree Usiatynski & David Evans
Jean & Linda Varner
Jimm Carly Weaver
Pierce & Elizabeth Webb
Richard Whitmore
Patty Yarmel

\$500 - \$999

Anonymous
Martin Abraham
David & Marca Anderson
Susan Anderson
David & Jan Angus⁵
Betsy & Gerald Archibald
Virginia Bachelor & Skip Battaglia
Jim & Linda Baroody
Jim & Laurie Barr
Jon & Pat Bertucci
John & Cindy Blawski
Jeff & Kathy Bowen⁵
Ed & Maggie Cavalier
Bill Chandler
Victor Ciaraldi
& Kathleen Marchaesi-Ciaraldi
Joe & Judy Darweesh⁵
Gabriel Del Vecchio
Dan & Jody DiLoreto
Terry Doherty
Victoria Doyle
Lynn & Pam Eberhardt
Marjorie & Stephen Elder
Sherman & Anne Farnham
Lynn & Neil Farrar⁵
Andrea & Richard Feldman
David & Anne Ferris
Elizabeth Fisher
Andrew & Jacquie Germanow
Robert Goeckel & Gay Greene
Ellen Goldenberg
Sharon Gray
Carol K. Hardy
Mary E. Haverfield⁵
Brud & Molly Hedges
Katherine Herrmann
A. Dirk & Linda Hightower
John & Barbara Holder⁵
Dan & Sandy Hollands⁵
Audrey Holly
Louise D. Holmes
John & Bonnie Hood*
Drs. Nadette Jacob & Jules Zysman
Douglas & MaryAnne Jones⁵
Cornelia Kamp
Michael Keefe & Joann Surre-Keefe
Karen & Eugene Kehoe⁵
Robert G. Kimmel
Edward E. Klehr⁵
Mark Kolko & Mona Friedman Kolko
Ellen & Charles Konar
Michael & Marcy Kucharski
Werner & Susan Kunz
Kathleen & Alfred Laitenberger*
Rahul & Nirupama Laroia
Thomas & Connie Lathrop
Thomas & Terrie Lee⁵
Doris & Austin Leve
Meg & Bill Lloyd⁵
Christopher & Susan Luedde
F.M. Paul Lyons
Thomas & Sandra Madejski⁵
Massie Family Fund at Rochester
Area Community Foundation

Thomas & Betsy Matthews
Judie & George Mayo
H. Winn McCray
Ralph & Martha Meyer
Daniel M. Meyers
Sanford & Jill Miller
Stacey Miller & Brad VanAuken
Jonathan Mink & Janet Cranshaw
Emily Neece & Alan Ziegler
Helen Newman
Dr. Alan Nye
& Nancy BB Meyer-Nye
Marie & Donald Oakleaf
Vinny Orlindini
Eric & Penelope Pankow
Marian Payson & Helen Wiley
Terry Platt & Dianne Edgar
Thomas & Nancy Poeth⁵
Marjorie Power
Edwin & Roberta Przybylowicz
Mr. & Mrs. Andrew Publow
Ken & Sheila Reasoner
James G. Reed
Abby & Josh Reinhard
Valerie & Stefan Reuss
Nancy Rice
Steve Rosen & James Wood
Deborah Rubens
Richard & Louise Sadowski
Francie & Larry Schenck
Caroline Schultz
Jim & Daria Shaw
Norm & Jane Silverstein
Jim & Marie Sorrentino
Rob & Janet Stewart
Sue & Karl Thielking⁵
Scott Turner
& Mary Worboys-Turner
Wayne & Anne Vander Byl
Anne Wallace
Kathy Wheat & Fred Schulte
Susan & Paul Wilkens
Kitty J. Wise
Susan & Larry Yovanoff
Eric I. Zeller Fund at Rochester Area
Community Foundation 
Ted & Marcia Zomow

\$250 - \$499

Anonymous (2)
Carol Adler
Suzanne & Richard Albright
Michael Amorese
Bob & Dawn Auerhahn
Mary Jane Bufundo
Deanna G. Baker
Linda M. Betstadt⁵
Bette Blakeney & Jim Dulmage
Dennis & Amy Boike⁵
Wyan Bovay
Patricia Bradley
Patricia Brous & Edwin Lopez
Ken & Kathy Brickell
Bertha R. Brinkley-Clancy
Andrew Burke

ANNUAL FUND DONORS

Dr. & Mrs. Richard & Peggy Burton
Lori Busch
Jane Capellupo
Jeannette Carra
Harriet & Jeff Carter⁵
Thomas Casselman
Robert & Barbara Castle
Nancy Castro
Tony Ciquino
E. A. Claypoole⁵
Kathleen Cloonan
Dennis & Sharon Conheady
Carol & Stuart Cooper
Richard & Claire Damaske
Susan Davis
Rachel & Jimmy DeGuzman
Linda Delaney
Alice DeMallie
Joseph DeRuyter⁵
Natalie Dickerson
The Dominas Family
Joan Dwyer
Samuel L. Edwards
& Judith K. Rickey
Gerald G. Estes
Trevor & Elizabeth Ewell
Susanna Ferris
Robin Fisher
Barbara L. Frank
Lisabeth Frarey & Michael Christie
Bruce & Elizabeth Freeland
Cynthia Goetzmann
Joy Goodman & John Sawyer
William & Ruth Grace
Richard & Kathy Grunow
Jeff & Ruth Hedin
Donna & John Himmelberg
James & Betsy Hoefen
Ellen Horey-Thiede
James & Sherrill Ison
Rabbi Alan & Jan Katz
Wally & Diane Knox
David & Andrea Lambert
Richard & Linda Lawrence
Thomas Lay
John Lebens & Florence Higgins
Phillip & Susan Lederer
Litt Family Fund
Marcia Lowry
Patricia Marks
Gail Mazur
Tom & Emily McCall⁵
Merri-Lou McKeever
Chris & Karen Mesolella
David & Nancy Munson
Thomas & Ronnie Nescot
James & Lois Norman
Jennie Oberholtzer
Charlie Owens
Phil Palumbo

Maureen & Marty Palumbos
Rick Papaj
Dolores F. Parlato
Yonite Pentelton
Louisa Pierson
Dr. Lee D. Pollan
Dr. Brock Powell
Mark Raeside
Dawn Riedy & David Berg
Ann & Robert Riemer
John Robb & Mary Jo Karpenko
Russell R. Roberts
Marion Robinson⁵
Raul Rodriguez
Karen Ross
Charles & Carolyn Ruffing⁵
Gerry & Fred Sauter
Kenneth Schirmuhly
Jon & Katherine Schumacher⁵
Scott Sherin
Timothy Slisz
Carolyn Smith
Ann H. Stevens
& William J. Shattuck
Stephen Sulkas & Melissa Schiff
Thomas & Linda Sullivan
Thomas & Rose Swartz
Edward Tanner & Elizabeth Treiber
Robert H. Thompson
& Bonnie DeVinney
Helen Urzetta Tortorici
Charles & Marian Turner
Sandra Vallot
Gerald & Beverly Verbridge
Patricia H. Wehle
Ann D. Weintraub
Dana Weiss & Carol Ebersole-Weiss
Robert S. Westfall
John & Laurie Witmeyer⁵
Eric Zeise & Ellen Henry
Charlie & Judy Zettek⁵

Other Donors included in Visionary Society 🕯

Anonymous (2)
Robert August
Helen H. Berkeley
Joyce & Allen+ C. Boucher
Sergio & Mary Ann Esteban
The Gouvernet Arts Fund at
The Community Foundation
Gwendolyn Hoffberg
Jack & Barbara Kraushaar
Dan & Nancy Loughran
Jeanne B. McHugh+
Mike & Mary Ninnie
Jane Parker & Fran Cosentino
Wolfgang Pfizenmaier
Stephen I. Rosenfeld+

William H.+ & Anne Saunders
Kim & Janet Tenreiro
Elizabeth Vanhorn+
Deborah Wilson

🕯 Donors whose lifetime
philanthropic commitment totals
over \$100,000

⁵Donors who have made a three-
year commitment to Geva's Annual
Fund

*Education Supporters

**Literary or New Works Supporter

+Deceased

*We have made every effort to ensure the accuracy of these donor lists. However, if you see an error or omission,
please accept our apology, and kindly call the Development Office at (585) 420-2049.*

PLAYWRIGHT'S SOCIETY



Geva Theatre gratefully recognizes the following generous donors who have made a three-year commitment of \$2,500 or more to Geva's Annual Fund.

(Donations listed are for the time period 4/1/24 to 4/1/25.)

Anonymous
Daniel & Elizabeth Abbas
Jeanine Arden-Ornt
& Daniel Ornt
Dennis & Mary Bassett
Katie Baynes & Joshua Stubbe
Carol & John Bennett
Nelson A. Blish & Sharon Stiller
Robert & Diane Boni
Peggy Boucher
Barbara & John Bruning
Philip & Sharon Burke
David J. & Margaret M. Burns
Margaret & Tim Busch
Essie Calhoun-McDavid
& Bernard McDavid
Betsy & John Carver
Center for Adolescent
& Young Adult Health
Gloria Culver & Joe Anderson
Ann Dozier & Guy Martin
Hope & Lance Drummond
William Eggers
& Deborah McLean
Franceen Elias-Stein
& Todd Stein
Peter Fackler & Kelly Barrett
Richard & Joan Fenton
Dave & Nance Fiedler
Paul & Mary Fromm
Patrick & Barbara Fulford
Bonnie Garner
Lori & Scott Green
Joanna & Michael Grosodonia
Christina Gullo
& John A. Mueller

James Haskins
& Michael Whistler
Jane Hasselkus & Richard Edic
Warren+ & Joyce Heilbronner
Dr. Tomás C. Hernández
& Dr. Keith S. Reas
Jean Horton
Norman Horton+
Emily Jones & Deborah Hughes
Paul & Lynne Kroner
Abhas Kumar
& Chetna Chandrakala
Harold & Christine Kurland
Diane & Stephen LaLonde
Barbara LaVerdi
& Bryan Donnelly
Jennifer Leonard
& David Cay Johnston
Edith M. Lord
Carol & Nick Love
Dan & Kiki Mahar
Annabelle Martin
Lisa Martinez DeVinney
Faheem & Laurie Masood
Diane & Jerry McCue
Peter & Elizabeth Messner
Steve Metzger
Michael & Frances Millard
Barbara Mitacek
Robert Neale & Rick Porlier
Nannette Nocon
& Karl Wessendorf
The Pace Family Fund
Shree Pandya
Don & Robin Pulver
Elizabeth Rennert

Averil & Michael Riley
Tom & Tammy Rogers
Dr. Gerald & Maxine Rosen
Laura J. Sadowski
Drs. Carl & OJ Sahler
Harold & Judy Samloff
Gary B. Schaefer
Richard & Vicki+ Schwartz
Gail Shoemaker
Joan & Ken Slater
James & Georgine Stenger
Bob & Gayle Stiles
Jim & Pam Stoffel
Maggie & Charlie Symington
Elizabeth M. Teall
Mimi & Sam Tilton
Susan & Robert Touhsaent
John S. Tritten
Wynndy Turner
Janet M. Tyler
Krestie Utech
Charis & Rich Warshof
Sherwin Weinstein
& Linda Cornell Weinstein
Joyce & William Weir
Carol J. Whitbeck
John Williams
Elizabeth Williamson
& Jennifer Tennant
Herb Winkelmann, Jr.
Helen A. Zamboni
& Steven I. Rosen

We have made every effort to ensure the accuracy of these donor lists. However, if you see an error or omission, please accept our apology, and kindly call the Development Office at (585) 420-2049.



MY SHELTER PETS ARE MY BEST FRIENDS

THEshelterPETPROJECT.ORG



IN MEMORY OF ...

Judy Andreano

Marilynn Andreano
Anne Hilliard
Marquerite Martellotta

Audrey Ashley

Mimi & Sam Tilton

Jeanne C. Baden

Joanna & Michael
Grosodonia

Jane Biggs

Sharon & John Carr

Dennis Bookshester

Dr. Gerald & Maxine
Rosen

Judy Buchanan

Ray & Sandy Buchanan

Lorie Chavkin

Robert Chavkin

Ann Christiansen

Leslie & Mark Rowe

Henry Connors

Neil Ball

Robert Cornelison

Rebecca Lavender

Dr. Salvatore Dalberth

Joan S. Dalberth

Fannie Daniels

Williams Daniels

Bill C. Davis

Patricia Marks

Cynthia DeFelice

Eileen Godfrey

Trish & Teale Dominas

Love, Glen

Linda Doty

Peter & Shannon
Reynolds

Morris Eaves

Dr. Gerald & Maxine
Rosen

Marlene Elkin

Ross Elkin

Peggy Ervin

Mark & Nicki Cottle

Dave Escher

Delaney Graham

Richard Fenton

Laura J. Sadowski

Shirley M. Ferris

Susanna Ferris

Marc Fisher

Robin Fisher

Marilyn Galley

Joseph Galley

Suzanne Gouvernet

Kate Bennett
Mary Bishop
Donna Borgus
Susie Cohen
Shirley Dawson
Bonnie Garner
Judith Graper
Elinor Grinols
Joanna & Michael
Grosodonia
Pamela & Ken Hines
Deborah Lattime
Carol & Nick Love
Marcia Lowry
Staffan & Lee Lundback
Shree Pandya
Susan Rogers
Jim & Daria Shaw
Peter & Deby Springer
Ingrid Stanlis
Maggie & Charlie
Symington
Mimi & Sam Tilton
Scott Turner
& Mary Worboys-
Turner
John Williams

Howard E. Gunerman

Scott Gunerman

Betty & Morris Herman

Phillip & Susan Lederer

Lisa Helen Hoffman

Daniel & Barbara
Hoffman
William & Priscilla
Petersen

Norman Horton

William & Laura Garrison
Joanna & Michael
Grosodonia
William McGuigan
Carol & Nick Love
David & Marjorie
Perlman
Laura J. Sadowski
John Williams

Jackie James

Lynne Manuel

Dee Kamp

Cornelia Kamp

Roberta Katz Sacks

Dr. Gerald & Maxine
Rosen

Sharon Kimmel

Robert Kimmel

Ed Kneetopkse

Sharon & Carl Wheat

JoAnne LaCasse

Mary Fenton

Bob & Maxine Lay

Thomas Lay

Adeline Lesk

Dr. Gerald & Maxine
Rosen

John Meyer

Dr. Gerald & Maxine
Rosen

James Miles

Dr. Gerald & Maxine
Rosen

Jeanette Neuer Hauck

Philip Neuer

Doris Ann Rocha

Andrea Rocha

Steve Rosenfeld

Ellen Goldenberg

Carol & Martin

Rosenberg
Charles Rosenberg

Jay Ross

Dan Ross

Robert Saltzman

Advanced Glass
Industries, Inc.
Carol & John Bennett
Joan & Michael Cohen
Loren Cohen
Lisa-Karyn Davidoff
& Larry M. Davidoff
Lori Dolnick
Jerry Goldman
Joanna & Michael
Grosodonia
Stan & Michelle Gross
Carol & Nick Love
Dorothy & Neal Madden
Shari Malinow
Joy Manis Piekunka
Tony & Barb Marino
Martin Nemeroff
Ellen & David Neuhaus
Ohara Corporation
Joy Plotnik
David & Gail Pogal
Barry Saltzman
SCHOTT North America
Evan & Monique
Spindelman
Donald & Deborah
Waltzer
Sherwin Weinstein
& Linda Cornell
Weinstein
Melinda Yanoff

Juliet A. Sandorfi

Marie Fischette

Peggy Savlov

Andrew & Jacque
Germanow

Hilda Selian

Daniel Meyers

Maureen Margaret Sexton

Janice A. Geddes
Dawn Mastrogiacomio

We have made every effort to ensure the accuracy of these donor lists. However, if you see an error or omission, please accept our apology, and kindly call the Development Office at (585) 420-2049.

TRIBUTES

Michael Slade

Carol & John Bennett
David Garretson
Abigail Packard
Katherine Smith

Joseph F. & Mary Ellen Slisz

Timothy Slisz

Robert W. Sweeney

Gerald G. Estes

Justin Vidgor

Carol & Nick Love

Margene Wagstaffe & Lois Anderson

Marcy & Ray Kraus

Jane C. Wargo

Jessica Best

Jack Watkins

Frederick & Suzanne Ricci

Rudy Weingart

Dr. Gerald & Maxine Rosen

Robert Zale

Liz Zale

IN HONOR OF ...

Sandra Bills

Dawn Hampsey

Sean Britton-Milligan

Shree Pandya

Linda Cornell Weinstein

Roberta Borg
Isobel Goldman
Carol & Nick Love

Renata Corrado-Green

Katie & Matthew Comeau

Hope Drummond

Clarice Brown
Velta Rouchon

Bonnie Garner

Patti Donoghue

Andy Germuga

Joel Shapiro

Christina Gullo

Carol & Nick Love
Gieranne Puskas
Shree Pandya

John Hamolsky

7Crest Financial
Partners- Ameriprise

James Haskins & Geva's Development Team

Gieranne Puskas

Barbara LaVerdi

Rob & Janet Stewart

Carol Love

Shree Pandya
Cassandra Ramos

Nannette Nocon

Shree Pandya

John Ricks

John Williams

Curtis Rivers

Barbara Stevens

Maxine Rosen

Steve Rosen & James Wood
Clare Rotenberg
Ariline & Warren Seideman

Elise Rosenfeld

Ellen Goldenberg

Laura J. Sadowski

Patti Donoghue

Alana Sansone

Shree Pandya

Christine Talbott

Julie Chen

Mimi & Sam Tilton

Louisa Pierson

John Williams

Charlie Owens
Retired Professionals Society

Catharine Wise

Martin Zemel & Laura Fulton

Richard Yurick

Karen Evans



GEVA LEGACY SOCIETY

Geva Theatre gratefully acknowledges the generosity of the following friends of the theatre who have formalized their commitment to Geva in their estate plans:

Anonymous (2)
Jeanne M. Beecher
Helen H. Berkeley
Allen C. Boucher*
Beverly T. Bowen*
John & Betsy Carver
Derek & Janice Chapman*
Glenn & Rebecca Fadner
Donna Fielding*
Kenneth J. Figscher+
Elizabeth Fisher
David & Linda Friedman
Jay+ & Betsy T. Friedman
Patrick & Barbara Fulford
Julia Grant
Jean Edgcomb Groff*
Richard & Marilyn+ Hare
Warren* & Joyce Heilbronner
Drs. Tomás D. Hernández
& Keith S. Reas

Nancy D. Hessler
David L. Hoffberg*
Norman Horton+
Nancie R. Kennedy*
Jack & Barbara Kraushaar
Drs. Dawn & Jacques+ Lipson
Richard Malinich*
Joseph Mancini*
Jeanne B. McHugh*
Ernestine W. Murray Chandler*
Eunice* & Donald Naulin
Emily Neece & Alan Ziegler
Dolores B. Owens*
Laurel Pace
Dr. Ramon & Judith Ricker
Marie Roberts
Dr. & Mrs. Harry Rosen
Stephen I. Rosenfeld*
Laura J. Sadowski
James G. Scanzaroli*

Richard & Vicki* Schwartz
Joan & Ken Slater
Ms. Rusty Smith*
Frederick & Mabel Stehler*
Maggie & Charlie Symington
Kim & Janet Tenreiro
Janet & John R. Tyler, Jr.*
Brad VanAuken
Elizabeth VanHorn*
Sherwin Weinstein &
Linda Cornell Weinstein
Henry W. Williams, Jr.*
Catharine J. Wise
John & Laurie Witmeyer
Robert B. Wolf
& Mary Alice Wolf*
Helen A. Zamboni

* Gift has been realized
+Deceased

We would be pleased to know if you have included Geva in your estate plans so that we may appropriately honor you.

For information about the Legacy Society, please contact the Development Office at (585) 420-2049.

*We have made every effort to ensure the accuracy of these donor lists.
However, if you see an error or omission, please accept our apology and kindly call the Development Office at (585) 420-2049.*

Geva's Audio Description Program is named after

LISA HELEN HOFFMAN

who fearlessly advocated for access to the arts for individuals who are blind or low vision.

She will always be remembered.

October 2019

**Advertise with us today-
we have your platform!
(716) 972-2250**

Buffalo Spree

Publishing, Inc.

buffalospree.com

CURTAIN CALL SUPPORTERS

*Geva Theatre thanks the following donors for their generous contributions to
Curtain Call 2024, the theatre's annual fundraising gala.*

PRESENTING SPONSOR

Nocon & Associates
A private wealth advisory
practice of
Ameriprise Financial Services,
LLC.

DIAMOND SPONSOR

ESL Charitable Foundation

PLATINUM SPONSOR

Barbara LaVerdi & Bryan Donnelly
Madeline's Catering LLC
RG&E

GOLD SPONSOR

Philip & Sharon Burke
Sam & Mimi Tilton
GP Flooring Solutions

SILVER SPONSOR

LaBella & Associates
Dennis & Mary Bassett
Barbara Bruning & Hope
Drummond
East House
Diane McCue
Robert Neale & Richard Porlier
Helen Zamboni

BRONZE SPONSORS

Jeanine Arden-Ornt & Dr. Daniel
Ornt

PADDLE CALL DONORS AND ADDITIONAL SUPPORT

(Donors of \$250 or more)

Anonymous
M&T Bank
Martin & Nancy Abraham
Jim & Laurie Barr
Jacob L. Barragato
Dennis & Mary Bassett
Patricia Beaumont & Len Swain
Kenneth & Kathleen Brickell
Marjorie Bricks
Barbara Burke
Philip & Sharon Burke
Michael & Elizabeth Burns
David J. & Margaret M. Burns
Margaret & Tim Busch
Lori Busch
Paula & Christopher Carter
Shirley Cirillo
Michael Clark
Keith & Celeste Cleary
Sherwin Weinstein & Linda
Cornell Weinstein
Frank & Susan Crego
Barbara de Leeuw
Rachel & Jimmy DeGuzman
Alice DeMallie

Terry Doherty
Victoria Doyle
Joan Dwyer
Dave & Nance Fiedler
Carolyn Foti
Marilynn Garbarino
Bonnie Garner
Bill Garrison
Jon & Kathy Gorom
Richard and Sharon Gray
Joanna & Michael Grosodonia
Richard & Kathy Grunow
Christina Gullo & John A. Mueller
Jane Hasselkus & Richard Edic
Katherine Herrmann
Laura Hopps
Sarah Kroetz
Abhas Kumar & Chetna
Chandrakala
Thomas & Connie Lathrop
Barbara LaVerdi & Bryan Donnelly
Michelle Lee
Jennifer Leonard & David Cay
Johnston
Lisa Martinez DeVinney
Chris & Karen Mesolella
Peter & Elizabeth Messner
Peg Meyers
Sally Millick
Mary A. Mills
Ligaya Nocon
Nannette Nocon & Mr. Karl
Wessendorf
Rhonda Noto
Dan & Jo-Ann O'Brien
William J. O'Connor Jr.
Vinny Orlindini
Tom & Peggy Osenbach
Charlie Owens
Rick Papaj
Yonite Pentelton
Robert & Maria Postgate
Tony Quercia
Raul Rodriguez
Marlene Rogalski
Christine Schaller
Craig Shaw
Kelly & Kathleen Shea
Scott Sherin
Pam & Neal Sherman
Malcolm & Elaine Spaul
Kiley Sullivan
Sam & Mimi Tilton
Wynndy Turner
Stephen R. Webb
Doug & Judith A. Webster
Carol J. Whitbeck
John Williams
Susan Yovanoff
Louis Zambelli

IN KIND SUPPORT

Airgami
Billsboro Winery
Century Liquor and Wines
Conolly Printing
Empire Digital Signs
Entre Computer Services
Rockcastle Florist
Gourmet Goodies
Genesee Brewing Company
Madeline's Catering LLC
Mundell Modern Pixels
Photography
Tito's Handmade Vodka

AUCTION & WINE DONORS

(Donors of \$250 or more)

MAE Beads
Rochester Red Wings
Ape and Canary
Ethan Allen Pittsford Design
Studio
Pinnacle Wine & Liquor
Wines for Humanity
Drag Me to the Stage LLC
Locust Hill Country Club
California Closets
The Strong National Museum
of Play
Rochester Gay Men's Chorus
ImageOut
L'Objet Wines
Hana Pilates & Bodyworks
Iron Smoke Distillery
Landmark Society of Western
New York, Inc.
New York Kitchen
Tito's Handmade Vodka
Finger Lakes Opera, Inc.
Susan B. Anthony Museum
& House
Scott Miller Salon & Spa
Billsboro Winery
Tantalo Fine Portraits
House of Guitars
Corn Hill Navigation
Bililavago LLC
Black Button Distilling
Madeline's Catering LLC
Century Liquor and Wines
Body20-Pittsford
Philip Burke
Margaret Busch
Sam & Mimi Tilton
Paul Guglielmo
Carol Love
Nannette Nocon
Charlie Owens
Shree Pandya
Helen Zamboni

GOVERNMENT SUPPORT

Geva Theatre gratefully acknowledges the support of



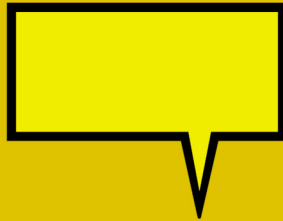
The New York State Council on the
Arts, with the support of Governor
Kathy Hochul and the New York
State Legislature



The County of Monroe
and the County
Executive Adam Bello



Empire State Development
- Division of Tourism -
I LOVE NEW YORK



**Reach out to a friend about
their mental health.**

Find more ways to help at SeizeTheAwkward.org

SEIZE THE AWKWARD



American
Foundation
for
Suicide
Prevention



The Jed Foundation

Happy Days Are Here Always at ECMS!

Fall registration is now open
for musicians of all ages!

Join us for:
Individual Lessons
Various Ensembles
And More!



EASTMAN
COMMUNITY
MUSIC SCHOOL



esm.rochester.edu/community
(585) 274-1400

EASTMAN SCHOOL OF MUSIC • UNIVERSITY OF ROCHESTER



BEGINNERS
WELCOME!

THE
Work Out
ROOM

A COMEDY SERIES

With Comedian
Kellye Howard

Geva
THEATRE

June 12-22

Join Kellye Howard for her stand up show:
"Soft Girl Era: Conversations w/ an Angry Black Woman"



Every Day is *Beautiful* at



Valley Manor

Episcopal SeniorLife Communities

Whatever inspires you – you'll find it at Valley Manor.
Whether it's creating your own masterpieces,
exploring the Neighborhood of the Arts or
enjoying drinks with friends, Valley Manor
celebrates the things that make life beautiful.

Create. Explore. Enjoy.

Discover the vibrant community at Valley Manor.

Visit ValleyManorOnEast.com Today!



A different approach to primary care medicine.

Convenient access. Personalized attention.

Personal Medicine of Rochester's physicians are dedicated to serving patients with a high standard of care and all the attention you deserve.

Benefits you can count on for an affordable membership fee

- See a physician at each visit and never feel rushed.
- Same day or next day appointments.
- Urgent need after hours? Contact your doctor directly.
- Comprehensive annual health screenings that surpass standard checkups.
- Personalized wellness plan with the resources you need to achieve your goals.

Now accepting new patients, age 18+ for a limited time.



James Budd, M.D.



**Personal Medicine
of Rochester**



Mitchell Ehrenberg, M.D.

