



GEVA THEATRE'S 24/25 SEASON SPONSOR

NINA SIMONE

FOUR WOMEN

January 14 - February 9, 2025



Geva
THEATRE

Written by
CHRISTINA HAM

Directed by
CHARLOTTE BRATHWAITE

Music Direction by
JUSTIN HICKS



Proudly
supporting
the arts.



Harter Secret & Emery LLP
ATTORNEYS AND COUNSELORS

hselaw.com

- **7** Welcome
 - A message from our Artistic Director, Elizabeth Williamson
- **8** *Nina Simone: Four Women Creatives*
- **12** Connectivity at Geva
 - Mondays at Geva
 - *Geva Insights*
- **14** Directors Note and Program Feature
 - Nina Simone: A Timeline of Her Life and Career
- **20** Biographies
- **25** About Geva Theatre
- **28** Supporters

**Thank You to our Sponsors for
*Nina Simone: Four Women***



GEVA THEATRE'S **24/25** SEASON SPONSOR

HONORARY SEASON PRODUCER

LEAD PRODUCER



MEDIA SPONSORS



ROCHESTER
FIRST.COM



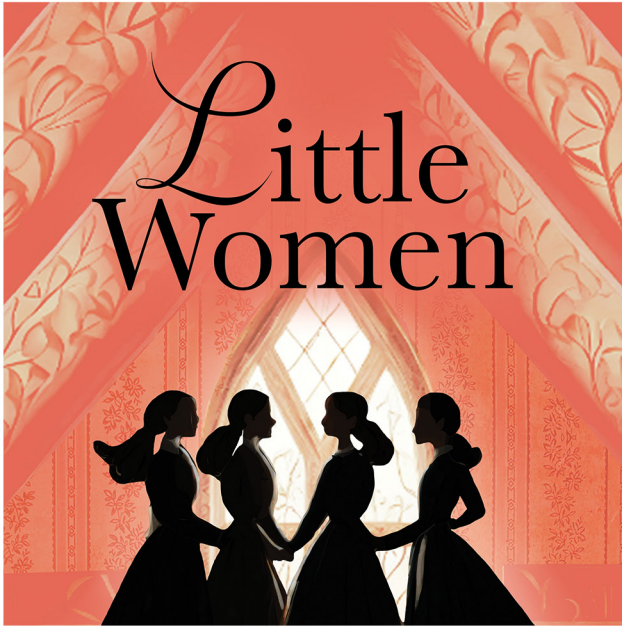
Official Vehicle Sponsor
of Geva Theatre



GEVA THEATRE'S 24/25 SEASON SPONSOR

COMING UP NEXT...

ON GEVA'S WILSON STAGE



FEB 25 - MAR 23

Louisa May Alcott's classic novel comes to fresh life in this inventive, theatrical adaptation which follows as the March sisters - Meg, Jo, Beth, and Amy - gather in the family attic. From making up fairy stories, writing for their pretend newspaper, and playing make believe, they graduate to scenes of love, loss, and - for Jo - artistic self-discovery, as they come of age against the backdrop of the American Civil War.

By Louisa May Alcott | Adapted by Heather Chrisler

Directed by Rachel Alderman, director of last season's

DIAL M for **MURDER**



UPCOMING SHOWS



PURE NATIVE

Brewster's back after almost a decade and things have changed. Brews is proud of his success working for a large corporation, and wants to share it with the people of his Rez in Upstate New York. After all, it's been a bad year, and Brews believes partnering with his corporation on a new bottled water factory would be a great opportunity for the Rez to create its own industry and sustain itself. But to his old love Connie, it's a betrayal of everything the Haudenosaunee stand for. Who will win?

04/15 - 05/11

WILSON STAGE



Beautiful

The Carole King Musical

Before she was hit-maker Carole King, she was Carole Klein, an up-and-coming songwriter from Brooklyn. Beautiful: The Carole King Musical is the inspiring story of how she made her mark on the music industry - and found her own voice in the process. Features the unforgettable songs "Will You Love Me Tomorrow," "You've Lost that Lovin' Feeling," "Natural Woman," and "I Feel the Earth Move" from King's iconic songbook.

05/28 - 06/29

WILSON STAGE

SPECIAL PROGRAMMING

GEVA THEATRE February Break Camp 2025

For Students in Grades 4 - 6

Join us for a week-long intensive February break camp for youth in grades 4-6. This camp will run the week of Feb 17 - Feb 21 from 9am - 5pm. Modeled after our Summer Academy, students will spend the day in Musical Theatre training, taking classes in Acting, Movement, and Voice, led by local theatre!

02/17 - 02/21

THE Work Out ROOM A COMEDY SERIES

Join us on the Fielding Stage for this season's *The Work Out Room*, Artist in Residence Baron Vaughn's comedy series where comedians develop their specials with a live audience! Some of the country's most exciting comedians will be here at Geva to test out new material and sketches well before their work hits a streaming service near you.

03/12 - 03/22 & 06/11 - 06/21

FIELDING STAGE

For Tickets & More Info,
Visit [GevaTheatre.org](https://www.gevatheatre.org), or call or visit
the Box Office at 595-232-4382.

2024-2025 BOARD OF TRUSTEES

EXECUTIVE COMMITTEE

Jane C. Hasselkus, Chair
Tom Rogers, Treasurer & Chair, Finance Committee
Helen A. Zamboni, Secretary
Diane F. McCue, Vice-Chair & Chair, Development Committee
Christina Gullo, Chair, Nominating & Governance Committee
Wynndy Turner, Co-Chair, IDEA Committee
Steven P. Metzger, Co-Chair, IDEA Committee
Essie Calhoun McDavid, At Large
Lisa Martinez DeVinney, At Large

TRUSTEES

Katie Baynes
Philip L. Burke
Margaret Busch
Essie Calhoun McDavid
Barbara de Leeuw
Lisa Martinez DeVinney
Hyacinth Hope Drummond
Bonnie Garner
Richard Gray
Lori B. Green
Christina Gullo*
James Haskins, *ex officio*
Jane C. Hasselkus
Tomás C. Hernández
Deborah L. Hughes
Abhas Kumar
Barbara J. LaVerdi
Dr. Dawn Lipson
Faheem Masood
Diane F. McCue
Steven P. Metzger
Miriam M. Moore

Robert Neale
Rhonda Noto
Shree Pandya
Tom Rogers
Jean Gordon Ryon
Laura J. Sadowski
Elaine Spaul
Elizabeth M. Teall
Mimi Tilton
Sam Tilton
Wynndy Turner
William F. Weir
John C. Williams
Elizabeth Williamson,
ex officio
Helen A. Zamboni

HONORARY TRUSTEES

Dennis Bassett*
Helen H. Berkeley*
Peggy Boucher
William A. Buckingham
Stephanie M. Caffera

Sergio Esteban*
David Fiedler*
Ronald H. Fielding
Betsy T. Friedman*
Patrick Fulford*
Joanna Grosodonia*
A. Thomas Hildebrandt
Maureen D. Holtzman
John F. Kraushaar*
Carol Love*
Peter Messner*
Michael B. Millard*
Emily Neece*
Nannette Nocon
David Perlman
John C. Razor*
Robert Saltzman
Paul Seidel
Maggie Symington*
Mary Kay Taber
Linda Cornell Weinstein*
Deborah Wilson

Trustees are volunteers and receive no compensation.

*Indicates Former Board Chair

TICKETS

Tickets can be purchased online at GevaTheatre.org, or by phone at 585-232-4382.
Box Office Hours are:
Tuesday - Saturday ... Noon - 8:00pm
Sunday ... Noon - 7:00pm
Monday ... Closed
Telephone: (585) 232-Geva (4382)
Gift Certificates in any dollar amount may be purchased year round from the Box Office.

GROUP RATES

Available for groups of 10 or more.
Call the Box Office at 232-4382 or email groups@GevaTheatre.org for more information.

STUDENT RUSH TICKETS

Available from \$15 for all non-sold out performances, beginning 2 hours prior to curtain time. Students must present valid ID. One ticket per person.

MESSAGE FROM GEVA'S ARTISTIC DIRECTOR

Welcome! Thank you so much for joining us for Geva's first show of 2025, *Nina Simone: Four Women*.

I've been very excited by the approach our director Charlotte Brathwaite is taking with this play about the iconic musician and activist. Working closely with playwright Christina Ham, Charlotte has always thought of the women in the song "Four Women" as elements of the same woman, different iterations of Nina Simone. She has activated that so that all the performers in our show are playing versions of Nina Simone herself. So Peaches, Sarah, Sephronia, Sweet Thing, and (new for this production) Eunice/Pianist are all also Nina herself.

We're very fortunate to have Rochester native (and Tony and Grammy nominee!) Kenita R. Miller returning to Geva in this show, along with a wonderful cast all around. Perhaps as you hear them sing these songs, brought to fresh life through the wonderful work of Yatta (aka. Ricky Sallay Zoker) and Justin Hicks, you will find, as I do, that they speak to you as powerfully today as when they were written. If you want to dive more deeply into conversation about Nina Simone's legacy and her impact on music and activism, I hope you'll join us for our Geva Insights conversation January 21, following the 6pm performance, with Dr. Jeffrey McCune and Dr. Jordan Ealey of the University of Rochester. And if you feel like hearing more music, please join us for our Mondays at Geva on January 27th 6pm - 8pm featuring Mel Henderson Trio ft. Quiana Joseph-Muhammad.

In our Connectivity Department, we're piloting a new winter break camp for grades 4-6, focused on musical theatre!, in February here. If you'd like to learn more, please visit <https://gevatheatre.org/education/>

As always, I'd like to thank our sponsors, our 24/25 Season Sponsor ESL Federal Credit Union, Honorary Season Producer Dr. Dawn Lipson, Lead Producer Buckingham Properties, and our Media Sponsors WROC 8 and Jazz 90.1. And this New Year, as always, I am most grateful for all of you!

Thank you for joining us!

Elizabeth Williamson
Artistic Director



PRODUCTION CREDITS

ELIZABETH WILLIAMSON
Artistic Director

Geva
THEATRE

JAMES HASKINS
Executive Director

Presents

NINA SIMONE: FOUR WOMEN

By **CHRISTINA HAM**
Directed by **CHARLOTTE BRATHWAITE**‡
Music Direction by **JUSTIN HICKS**

Scenic & Lighting Design
KENT BARRETT†

Costume Design
MARSHA GINSBERG†

Sound Design & Composition
YATTA (aka. ricky sallay zoker)†

Hair & Wig Design
CASSIE J. WILLIAMS

Production Stage Manager
KEVIN GREGORY DWYER*

Assistant Stage Manager
KATE DUPREY*

Casting Director
ERICA JENSEN, CSA
CALLERI JENSEN DAVIS

Associate Producer
JASMINE B. GUNTER‡

Production Manager
JOSEPH BIAGINI

General Manager
THALIA SCHRAMM

Original Music Collectively Composed by
YATTA (aka. ricky sallay zoker)†,
JUSTIN HICKS, and **X'ENE SKY***

ACKNOWLEDGEMENTS

NINA SIMONE: FOUR WOMEN was commissioned by Park Square Theatre, St. Paul, Minnesota Richard Cook, Artistic Director, C. Michael-jon Pease, Executive Director, and received its first public performance on March 8, 2016

Additional developmental support for *NINA SIMONE: FOUR WOMEN* provided by Kansas City Repertory Theatre: Stuart Carden, Artistic Director, Angela Gieras, Executive Director
Milwaukee Repertory Theater: Mark Clements, Artistic Director, Chad Bauman, Executive Director

NINA SIMONE: FOUR WOMEN is presented by special arrangement with United Talent Agency

Geva is a proud partner of  in the Geva-Brockport Alliance.

A Spanish-language version of this program is available at the Box Office and online at GevaTheatre.org. Translator: Marisol Galarza-Ruiz

PRODUCTION CREDITS

THE CAST

(In order of appearance)

Peaches/Nina.....	Garnet Williams*
Sarah/Nina.....	Kenita R. Miller*
Sephronia/Nina.....	Sojourner*
Sweet Thing/Nina.....	Hillary Jones*
Eunice/Pianist/Nina.....	X'ene Sky*

ADDITIONAL CREDITS

Assistant Director/Movement.....	Audrey Elaine Hailes
Associate Costume Design.....	Ilir Ahmetaj
Assistant Scenic Design.....	Roma Cervino
Assistant Lighting Design.....	Mbhali Edwards
Production Assistant.....	AnneMarie Giannandrea
Open Captioner.....	Samantha Geffen
Sign Interpretation Coordinator.....	Luane Davis Haggerty
Director of Artistic Sign Language.....	Tamara Walton
Sign Interpreters.....	Ali Giudice and Danny Huntley
Audio Description Program Coordinator and Consultant.....	Rene Latorre
Audio Describer.....	MJ Savastano

TIME

September 16, 1963 - Today

SETTING

The stage. Nina's Mt. Vernon, NY living room and the ruins of 16th Street Baptist Church in Birmingham, Alabama. A collision of the literal and the figurative as the design aims to capture a moment in time in the creative process.



*Members of Actors' Equity Association, the Union of Professional Actors and Stage Managers in the United States.



†Indicates members of the Stage Directors and Choreographers Society, an independent national labor union.



‡The scenic, costume, lighting and sound designers in LORT Theatres are represented by the United Scenic Artists, Local USA-829 of the IATSE.



Geva Theatre operates under agreements between the League of Resident Theatres (LORT), a consortium of regional theatres throughout the nation; Actors Equity Association (AEA), the union of professional actors and stage managers in the United States; the Stage Directors and Choreographers Society (SDC), an independent national labor union; and United Scenic Artists (USA), a union of scenic, costume, lighting and sound designers.



Geva Theatre is a member of Theatre Communications Group (TCG), the national service organization for the American Theatre.



Please note that the taking of photographs or use of recording devices during the performance is not permitted. Cell phones and all other electronic devices are strictly prohibited in the theatre.

PRODUCTION CREDITS

MUSICAL NUMBERS

Trouble in Mind

By Richard M. Jones

Mississippi Goddam

By Nina Simone

Courtesy of WC Music Corp. (ASCAP) Used by permission.

Sea Lion Woman

Traditional African American folk song

Old Jim Crow

By Jackie Alper, Nina Simone and Ron Vander Groef
Courtesy of WC Music Corp. (ASCAP) Used by permission.

God Be With You 'Til We Meet Again

Traditional Hymn

Lyrics by Jeremiah Eames Rankin, Music by William Gould Tomer

His Eye is on the Sparrow

Traditional Gospel Hymn

By Civilla D. Martin and Charles H. Gabriel

If He Changed My Name

Traditional spiritual

By Robert MacGimsey

Images

By Nina Simone

Courtesy of WC Music Corp. (ASCAP) Used by permission.

Sinnerman

By Composer and Author Trad and Nina Simone
Courtesy of WC Music Corp. (ASCAP) Used by permission.

Everything Must Change

Written by Benard Ighner

Courtesy of Almo Music Corp. Used by permission.

To Be Young Gifted and Black

Written by Weldon Irvine and Nina Simone

Used by Permission of EMI GROVE PARK MUSIC INC., NINANDY MUSIC. All rights reserved.

Shout Oh, Mary

Written by Christina Ham

Four Women

Written by Nina Simone

Used by Permission of EMI WATERFORD MUSIC, INC., ROLLS ROYCE MUSIC CO. All rights reserved.



H Hallagan
Furniture

DIANE PRINCE
FURNITURE
&
GIFTS

*Give your home
a fresh look this year*

92 S. Main St., Fairport 585.388.0060

PROGRAM BOOK PRODUCED BY

Buffalo Spree Publishing, Inc.

PRESIDENT & CEO

Sharon Levite

VICE PRESIDENT/CHIEF REVENUE OFFICER

PUBLISHER

Barbara E. Macks

EXECUTIVE EDITOR

Meagan Walker Doxtad

MANAGING EDITOR

Donna Hoke

CREATIVE DIRECTOR

Jean-Pierre Thimot

ART & PRODUCTION

SENIOR GRAPHIC DESIGNERS

Joshua Flanigan | Kim Miers | Nicholas Vitello

GRAPHIC DESIGNERS

Rachel Kaznica | Tamararie Mitravich

TO ADVERTISE

buffalospree.com or call

716-972-2250



GIVE NEW MEANING TO WHAT TRULY MATTERS.

At ESL, we believe in the worth of our collective strength — to uplift the whole community and help you thrive where you belong.

ESL is proud to support **Geva Theatre** because creativity connects us all.

KAMILLA,
ESL CUSTOMER
Henrietta



esl.org/you-belong

Membership subject to eligibility. ESL is a registered service mark of ESL Federal Credit Union.

CONNECTIVITY

Connectivity at Geva Theatre's overarching objective is to connect more people and organizations with the art presented on its stages. To build more connected relationships with existing patrons and partners. To build new and meaningful relationships with people and organizations with whom we have traditionally had no or little connectivity, the sticky kind of connectivity that endures.

Connectivity at Geva programs are sponsored, in part, by Volvo Cars Rochester.

Mondays at Geva

Mondays at Geva Event for *Nina Simone: Four Women*:

MONDAY, JAN 27 6 – 8 p.m.



**Mel
Henderson**



**Sean
Jefferson**

We invite you to be part of our Mondays at Geva series, where we will pay tribute to the timeless musical legacy of Nina Simone. This special event will take place on Monday, January 27th, from 6:00 PM to 8:00 PM in the welcoming lobby of Geva Theatre. Experience the captivating fusion of jazz standards and Nina Simone's iconic tunes, brought to life by the talented Mel Henderson Trio, featuring Quiana Joseph-Muhammad.



**Quiana
J-Muhammad**



**Chris
Northington**

Enjoy an evening of rich music, meaningful collaboration, and community. Refreshments will be served.

Geva *Insights*

Geva Insights Event for *Nina Simone: Four Women*:

TUESDAY, JAN 21 Post-6pm Performance



**Dr. Jeffrey Q.
McCune, Jr.**



**Dr. Jordan
Ealey**

Geva is proud to be partnering with the University of Rochester's Black Studies Department on several post-show discussions this season. Department Chair Dr. Jeffrey Q. McCune, Jr. will be joined by Dr. Jordan Ealey to discuss Nina Simone's legacy and her impact on music and activism.

SAVE THE DATE!

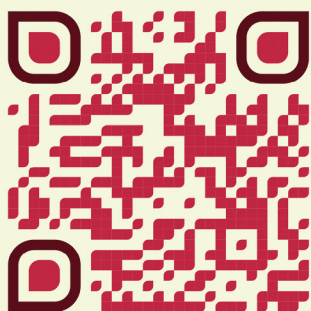
ENCORE

The Season Summer Soirée

June 6, 2025

Geva Theatre

Join us to celebrate our 24/25 Season, featuring encore performances by some of your favorite actors this season, including an exclusive sneak peek of a show from the upcoming season!



Suggested Attire: Create an outfit from your favorite show of the 24/25 season! Awards and prizes for Best Dressed will be given out during the event.

Updates and more information can be found by scanning the QR code with your phone's camera.

***Nina Simone: Four Women* by Christina Ham Directed by Charlotte Brathwaite**



The four girls murdered in the church bombing during Bible study in Birmingham, Alabama L to R: Addie Mae Collins (14), Cynthia Wesley (14), Carole Robertson (14), and Carol Denise McNair (11)

An artist's duty, as far as I'm concerned, is to reflect the times.
- Nina Simone

Nina Simone was forever changed the moment the lives of four young girls were consumed by a terrorist bomb at the 16th Street Baptist Church in Birmingham, Alabama. A reverberation of rage stirred in her at the senseless violence towards the innocent. A revolutionary artist of the highest calling, Nina Simone refused to look away. Armed with deeply rooted spiritual fortitude and rigorous artistic acumen, she told the truth of what she saw and felt, she sang out loud what others were afraid to say. She became a portal for unflinching bravery, porous vulnerability and steadfast resilience. She reflected us to ourselves through her music - what she called her "burden and [her] gift".

Only an artist can tell what it's like to die. Or to have somebody die. What it's like to fear death. What it's like to fear. What it's like to love. What it's like to be glad. Hymns don't do this, churches really cannot do it. The trouble is the price the artist has to pay himself and that you the audience must also pay is a willingness to give up everything. To realize that even though you spent years acquiring this house, this furniture, this position, raising this child, none of it belongs to you. You can only have it by letting it go. It is not a day at the bargain counter, it is a total risk of everything. Of you, of who you think you are. Who you think you'd like to be, where you think you'd like to go. - James Baldwin

We are living in unprecedented times. The hatred that fueled violence on that fateful day in 1963 is festering today more than 60 years later. It is a part of our story, it is a part of who we are. So, what are we going to do about it?

...All I'm trying to do all the time is just to open people up so they can feel themselves, and let themselves be open to somebody else. That is all. That's it. - Nina Simone

DIRECTOR'S NOTE

Nina Simone is embedded in the characters Peaches, Sarah, Sephronia, Sweet Thing and Eunice, a celebration of Black womanhood, survivors of American terrorism from slavery till today. The songs they sing remind lovers of life and freedom not to shy from the fight, nor the yearning to be human beings, but to lean fiercely arms locked into all that is life-affirming.

Deepest gratitude to Nina Simone, Lorraine Hansberry, Angela Davis, El-Hajj Malik El-Shabazz Malcolm X, James Baldwin, Meshell Ndegeocello and Tamar Kali for fertilizing the seeds of this production.



Nina Simone, outspoken, revolutionary artist with friend, writer and activist Lorraine Hansberry, and SNCC Student Nonviolent Coordinating Committee members Avon Rollins and Marion Barry. Photo: courtesy Schomburg Center for Research in Black Culture. The New York Public Library.



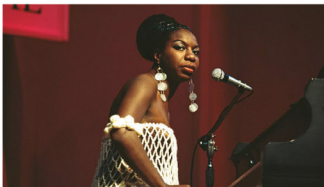
Nina Simone with friend, writer and activist James Baldwin. Her social/political circle was made up of these revolutionaries including Kwame Toure (Stokely Carmichael), Langston Hughes, Miriam Makeba, Malcolm X and Betty Shabazz. Photo: Bernard Gotfryd courtesy Schomburg Center for Research in Black Culture. The New York Public Library.



Nina Simone in her home after returning to the United States from a self-imposed exile. Photo: David Becker, Los Angeles Times

Nina Simone A Timeline Of Her Life and Career

Compiled by Fiona Kyle, Literary Manager and Artistic Associate



(Photo Credit: David Redfern/Redferns)

Nina Simone was a renowned American singer, pianist, songwriter, and civil rights activist. Her music seamlessly blended classical, jazz, blues, gospel, and pop, earning her the title “High Priestess of Soul.”

• **February 21, 1933:** Eunice Kathleen Waymon was born in Tryon, North Carolina, the sixth of eight children.

• **1936-1937:** She began playing piano around the age of 3 or 4, and displayed remarkable musical ability.

• **1940:** She started formal piano lessons with Muriel Mazzanovich (Miss Mazzy), an English piano teacher who recognized and nurtured her classical abilities. She practiced up to eight hours a day, playing Bach, Brahms, Debussy, among many others.

• **1950:** She graduated as valedictorian from Allen High School for Girls in Asheville, North Carolina.

She enrolled at the Juilliard School of Music in New York City, studying piano with a focus on classical music. She supported herself by working as an accompanist and giving piano lessons.

• **1951:** She applied to the prestigious Curtis Institute of Music in Philadelphia, hoping to pursue a career as a classical pianist, and her family relocated there to be closer to her. She was denied admission, which she believed was due to racial discrimination.

• **1954:** She adopted the stage name Nina Simone when she began playing at the Midtown Bar & Grill in Atlantic City, New Jersey. “Nina” (meaning “little girl” in Spanish) was a nickname from her then-boyfriend, and “Simone” was inspired by French actress Simone Signoret. She used the name to hide her nightclub performances from her family, who might disapprove of her playing “the devil’s music.”

• **Mid-1950s:** While performing at nightclubs, Simone began blending classical piano techniques with jazz, blues, and pop, influenced by the demands of her audience. Her unique style quickly gained attention and helped establish her as a versatile musician.



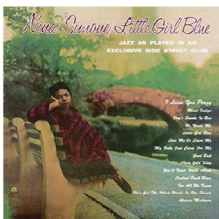
Nina, aged 8, in Tryon, NC (Photo Credit: Saving Places / Nina Simone Project - Tryon, NC)



Advertisement in the Atlantic City Press

• **1957:** Simone recorded her debut album, *Little Girl Blue*, featuring a blend of jazz, blues, and classical music. It would be released several years later.

• **1958:** She briefly married Donald Ross, but the marriage ended shortly afterward due to differences in their aspirations and lifestyles.



• **1959:** Signed with Bethlehem Records and released her debut album, *Little Girl Blue*. The album included her first hit, "I Loves You, Porgy," a song by George and Ira Gershwin from their opera *Porgy & Bess*, which became her breakout success.

She signed then with Colpix Records and released several albums soon after, including *Nina Simone at Town Hall* and *The Amazing Nina Simone*.

• **1961:** Married Andrew Stroud, a New York City police detective who became her manager. Their marriage was tumultuous, marked by physical and emotional abuse. The couple moved to Mount Vernon, New York.

• **1962:** Simone gave birth to her daughter, Lisa Celeste Stroud, in Mount Vernon. The home became a hub for intellectual and activist gatherings, often hosting influential figures from the Civil Rights Movement. They lived near to Malcolm X, and their children became close friends.

• **1963:** In response to the assassination of Medgar Evers and following the tragic 16th Street Baptist Church bombing in Birmingham, Alabama, which claimed the lives of Carol Denise McNair, Cynthia Wesley, Carole Robertson, and Addie Mae Collins, four young Black girls, Simone wrote "Mississippi Goddam." The song, released in 1964, became an anthem for the Civil Rights Movement.

• **1964:** Simone signed with Philips Records, allowing her to record songs reflecting her African American heritage. She released the album *Broadway - Blues - Ballads*.

• **1965:** Performed "Mississippi Goddam" and other civil rights songs in Selma, Alabama, during the historic marches led by Martin Luther King Jr. and other activists, further solidifying her role as a voice for justice.

She released the albums *I Put a Spell on You*, *Pastel Blues*, and *Let It All Out*.

• **1967:** She released the albums *High Priestess of Soul*, *Nina Simone Sings the Blues*, and *Silk & Soul*.

• **1969:** She released the album *Black Gold*, featuring the song "To Be Young, Gifted and Black," which she wrote in honor of her dear friend, activist-playwright Lorraine Hansberry, who had died in 1965.

Simone left Stroud after enduring years of domestic abuse. The separation was a turning point in her life, but it also left her financially vulnerable, as Stroud had managed most of her career and finances.



Nina Simone and Andrew Stroud.
(Photo Credit: Courtesy of the Estate of Alfred Wertheimer)

PROGRAM FEATURE

- **1970:** Simone left the United States, disillusioned by racism, civil rights struggles, and tax issues. She initially moved to Barbados.
- **1971:** Simone moved to Liberia for a short time at the invitation of friends. Simone described this period as one of emotional and spiritual renewal, though it was also marked by instability.
- **1973:** She relocated to Switzerland, then later to the Netherlands and France, as she searched for stability in her personal life and career. Her finances and mental health declined during this time due to unresolved tax issues and her struggles with bipolar disorder.
- **1974:** Simone released *It Is Finished*, her final album with RCA Victor.
- **1982:** Simone released *Fodder on My Wings*, recorded in France. The album reflected her personal struggles, financial woes, and the isolation she felt while living abroad.
- **1987:** Simone's career was revived when her song "My Baby Just Cares for Me" was used in a Chanel No. 5 perfume commercial, leading to renewed interest in her music.
- **1990s:** She settled permanently in Carry-le-Rouet, France, near Marseille, where she lived a reclusive life but continued to perform occasionally.
- **1993:** Simone published her autobiography, *I Put a Spell on You*, offering an unflinching look at her life, career, and struggles.
She released her final album, *A Single Woman*.
- **2000:** Simone was the recipient of a Grammy Hall of Fame Award for her rendition of "I Loves You, Porgy."
- **2003:** Simone was awarded an honorary degree from the Curtis Institute of Music, which had denied her admittance earlier in her life.
- **April 21, 2003:** Passed away at her home in Carry-le-Rouet at the age of 70.
- **2018:** Her childhood home in Tryon, North Carolina, was designated a National Treasure by the National Trust for Historic Preservation.
Simone was inducted into the Rock and Roll Hall of Fame.
- **2019:** "Mississippi Goddam" was selected by the Library of Congress for preservation in the National Recording Registry for being "culturally, historically, or aesthetically significant."



Nina Simone, left, at Wilhelmina "Coo Coo" Tubman's birthday party. (Photo Credit: Courtesy of the Parker family collection, Monrovia, Liberia)



Nina Simone performing in Hamburg, 1997 (Photo Credit: PA Images)

ACTING



DESIGN/TECH



GEVA THEATRE

PROFESSIONAL INTERNSHIPS



THEATRE BROCKPORT

INTENSIVE THEATRE EXPERIENCE
IN A LIBERAL ARTS ENVIRONMENT



Department of
Theatre & Music Studies
SUNY BROCKPORT



THEATRE BROCKPORT

CONTACT: (585) 395-2478 | theatre@brockport.edu



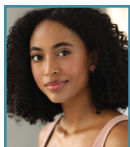
**Join us at Geva's Bar
and café, featuring
Nine Spot Brewing!**



*The bar & café are always open at least 2 hours
ahead of performances. Check online for details.*

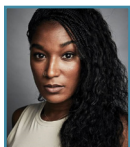
CAST

SOJOURNER (Sephronia/Nina) (she/her) is currently in the cast of *Hadestown* on Broadway! Other credits include *Elsbeth* on CBS, an upcoming feature - *The Snare*, NBC's "Scene in Color Series," and Hollywood Bowl's *Beauty and the Beast*. Sojourner worked



as a recording artist for Walt Disney Records' DCappella and premiered with the group on American Idol, Disney Channel, Freeform, and *The Incredibles 2* movie soundtrack. She is currently recording her debut folk album and continues to write and publish poetry. Her poetry was recently published in *Black Love Letters*, with a foreword by John Legend (available at Barnes & Noble and bookstores nation-wide). NYU Tisch. Grateful to God, family, and the opportunity to tell this story about one of her biggest musical inspirations. sojournerbrown.com [@sojournerbrown](https://www.instagram.com/sojournerbrown)

HILLARY JONES (Sweet Thing/Nina) (she/her) Can we shift the energy in this industry for the better? - a question at the center of Hillary Jones' mission statement. Born and raised in chocolate city Washington D.C, Hillary started her journey as an artist at Duke



Ellington School of the Arts and went on to graduate from the SUNY Purchase BFA acting conservatory. Since then she has trained her breath and body in Europe, worked on-camera and on-stage in projects ranging from national commercials to her work at the National Theatre as the lead in *Imagine*. Her skill set is diverse in that she also works as a Movement choreographer, Fight coordinator, Writer, Creative director, and Activist. Her next strides will be in creating film and theatre with a focus on working with artists who can Disrupt, Change and heal our industry.

KENITA R. MILLER (Sarah/Nina) (she/her) is thrilled to be back at Geva!!! Broadway: *For Colored Girls* (Lady In Red/Tony Nomination, Drama Desk & Drama League), *Come From Away* (Hannah), *Once On This Island* (Mama Euralie/Grammy Nom.), *The Color Purple* (Celie), *Xanadu* (Erato/Kira understudy). Off-



Broadway: *Dessa Rose* (Dessa Rose Standby), *Bubbly Black Girl Sheds Her Chameleon Skin* (Granny) (Encores!), *Bella: an American Tall Tale* (Miss Cabbagestalk/Mama), *Merrily We Roll Along*

(Encores!), *Wild Party* (Encores!), *Langston In Harlem* (Zora Neale Hurston - Drama Desk Nom./Audelco Award), *Working* (Drama Desk Award), Avenue Q. Regional: *Parade* (Minnie McKnight, Angela/2014 Barrymore Award Outstanding Featured Actress), *Once On This Island* (Timoune/Mama Euralie), *Ragtime* (Sarah). Film/TV: *Tick Tick Boom*, *Sesame Street*, *Bull*, *Hostages*, *Blacklist*. Band: The Hawtplates Instagram: [@eminanina81](https://www.instagram.com/eminanina81) [@thehawtplates](https://www.facebook.com/thehawtplates) Facebook: Kenita Miller

X'ENE SKY (Eunice/Pianist/Nina) (she/her) is a classically trained pianist, vocalist and composer from Los Angeles, California. She has studied at the Highschool of Performing and Visual Arts and holds degrees in piano performance and musicology from The University



of Texas at Austin. A descendant of the musical legacy of both Nina Simone and Beethoven, her teachers include Kana Mimaki, Betty Mallad, Nancy Garrett, Sophia Gilmon, Tracy Satterfiled, Lindsay Kesselman, and Micaela Tobin. She has performed with the Houston Grand Opera, Walt Disney Concert Hall, and most recently was the titular performer in Justen LeRoy's opera, *X'ene's Witness*. X'ene's compositional work focuses on ritual, repetition, slavery and the environment. She is currently working on her own opera *GOAT* and a visual album, *Vengeance* expected Fall 2025.

GARNET WILLIAMS (Peaches/Nina) (she/they) is an actor, writer, and singer originally from Atlanta, GA. Some favorite roles include Bombalurina in *Cats: The Jellicle Ball*, City Weed in *Brooklyn*, Pythio in *Head Over Heels*, and a co-star on *American Horror Story NYC*. For Lucile.



CREATIVE & ARTISTIC TEAM

CHRISTINA HAM (Playwright) (she/her) Christina Ham's plays have been developed and produced both nationally and internationally with the Kennedy Center, Arena Stage, Center Theater Group, The Guthrie Theater, Ensemble Studio Theatre, The Goodman Theater, Institute of Contemporary Art in Boston, Tony Award winning producer Arielle Tepper Madover off-Broadway at Theater Row, South Africa's The Market Theatre, the Tokyo International

Arts Festival among many others. Her theater for young audiences play *Four Little Girls: Birmingham: 1963* was directed by Tony Award winning actress Phylicia Rashad and performed in front of a sold-out audience at the Kennedy Center to commemorate the 50th anniversary of the 16th Street Baptist Church bombing. It was simultaneously presented in 47 states across the country and streamed worldwide to commemorate the bombing with former Secretary of State Condoleezza Rice and former Attorney General Eric Holder conducting the post-show discussion in Birmingham. Her theater for young audiences musical *Ruby!: The Story of Ruby Bridges* was the best-selling show in the history of St. Paul's SteppingStone Theatre. Christina is a two-time recipient of a McKnight Fellowship in Playwriting and a Jerome Fellowship from the Playwrights' Center in Minneapolis, the Marianne Murphy Women & Philanthropy Award in Playwriting, a MacDowell Colony Artist Residency, and a previous nominee for Center Theater Group's Richard E. Sherwood Award for Distinguished Emerging Theater Artist. She has received commissions from the Kennedy Center, The Guthrie Theater, and Ensemble Studio Theatre/Alfred P. Sloan Foundation, among many others. Her plays are published by Dramatic Publishing, Heinemann, PlayScripts, Inc., Smith and Kraus, and Oberon Books. She is a graduate of the University of Southern California and holds an MFA in Playwriting from The UCLA School of Theater, Film, and Television where she was a Graduate Opportunity Fellow. Christina is an Affiliated Writer at the Playwrights' Center where she is a member of its Advisory Council. She is a member of the WGAWest, The Dramatists Guild of America, The Kilroys, and the Playwrights Union. American Theatre magazine named her one the top 20 most-produced playwrights of the 2018-19 season. She was a Mellon Foundation Playwright in Residence at Pillsbury House Theatre. She was a Supervising Producer for the Emmy Award winning series *Westworld* starring Evan Rachel Wood, Thandie Newton, Jeffrey Wright, Aaron Paul, Ed Harris, and Tessa Thompson for HBO.

CHARLOTTE BRATHWAITE (Director) (she/her/we) is a creator, director, and producer of original genre-defying works that illuminate the realities and dreams of those whose stories have been marginalized, silenced and ignored. Her trans-disciplinary inquiry manifests as immersive gatherings of color, music, and she has collaborated with noted artists such as Meshell Ndegeochello, Jacqueline Woodson, adrienne

maree brown, Justin Hicks, Ayesha Jordan, Peter Sellars, Kyle Abraham and Malick Welli amongst others. Recipient of major grants, awards and fellowships including Doris Duke, United States Artists, Art Matters, Creative Capital and the Princess Grace, her works have been presented across the globe in North and South America, the Caribbean, Europe, Africa, Asia and Australia. Co-Founder of Forgotten Paradise Projects in Dakar, Senegal. MFA Yale University. charlottebrathwaite.com

JUSTIN HICKS (Music Director) (he/him) is a songwriter, vocalist, and sound artist who has collaborated with numerous musicians and artists, including Abigail DeVille, Kaneza Schaal, Cauleen Smith, Meshell Ndegeocello, Hilton Als, Darius Jones, Steffani Jemison, Charlotte Brathwaite, Sunder Ganglani, June Cross, Janani Balasubramanian, and Toshi Reagon. Spanning conceptual art, alternative jazz, experimental opera, avant-garde theater, sound installation, and design, his work has been presented by Lincoln Center for the Performing Arts, The Public Theater, Baryshnikov Art Center, Festival steirischer herbst (Graz, AT), Symphony Space, JACK, Koko London, The Bushwick Starr, and in the permanent collection at The Albertinum Museum in Dresden, DE. Hicks was a member of Kara Walker's 6-8 Months Space and holds a culinary diploma from ICE in New York City.

KENT BARRETT (Scenic & Lighting Design) (he/him) is a multi-disciplinary designer and artist. Kent currently teaches design and technology at Dickinson College. He is a former company member with The Wooster Group, an NEA Grant recipient, and instructor at MIT. Kent is proud to be a longtime collaborator with Charlotte Brathwaite. A prolific technologist and designer, Kent's work has been seen at venues such as The Park Avenue Armory, Harlem Stage, La MaMa, Signature, The Public, The Brooklyn Lyceum, and Lincoln Center as well as internationally. In addition to his work in theater, dance, and performance, Kent has also collaborated widely on independent films, art installations, and with architectural lighting firms. Kent is one of the founding members and Co-Artistic Director of Valley Traction Arts Collective - an experimental performance group creating work in, for, and about the Cumberland Valley.

MARSHA GINSBERG (Costume Design) (she/her) is a visual artist and stage designer working between performance, opera and photo/installation formats. She received her MFA from NYU Tisch School of the Arts and BFA from the

WHO'S WHO

Cooper Union School of Art with post-grad studies at the Whitney Museum Independent Study Program. She has designed spaces and clothes for live performances in major theaters and museums in New York City, and regionally throughout the United States. Internationally — work in Germany, Switzerland, France, Greece, UAE, including Festival D'Autumn Paris, HKW Berlin; Opera Basel; Deutsches Nationaltheater Weimar; Opéra National de Bordeaux; Athens Epidaurus Festival, etc. Current: *Primary Trust*, by Eboni Booth at Roundabout, Laura Pels, NYC; *Treemonisha* by Scott Joplin with orchestrations and prologue/epilogue by composer Damien Sneed, Opera Theater of St. Louis. *Letters from Max* by Sarah Ruhl at Signature Theater, NYC; Benjamin Britten's *Midsummer Night's Dream* in Repertory at Deutsche Oper Berlin; Theater, NYC. Grants/Awards: 2023 Obie Award for the Creative Team for Sanaz Toosi's *English*.

YATTA (aka. ricky sallay zoker) (Sound Design & Composition) (they/them) is a Sierra Leonean-American composer, vocalist, and multimedia artist. Their approach to sound and performance is characterized by improvisation, sampling, and spirituality. Their debut EP, *Spirit Said Yes!*, planted their stake in NYC's experimental music scene, performing at venues like MoMA and The Kitchen. *WAHALA*, their second album, served as the score for *An Episode: Ricky's Room*, a solo theatrical production commissioned by The Shed. In 2020, YATTA released *Dial Up*, a collaborative album with Moor Mother, which the duo premiered at The Getty. This year, YATTA debuted *PALM WINE*, named one of *The Wire's Best Albums of 2024*. ricky's compositions have been featured in award-winning films like *Nanny and Seeking Mavis Beacon*. They hold an MFA in Music/Sound from Bard College.

CASSIE J. WILLIAMS (Hair and Wig Design) Design credits include *Arms and the Man* (Theatre Row), *Otherworld* (Delaware Theatre Company), *Glimmerglass Opera Festival 2021 Summer Season*, *No Cowards in Our Band* (Syracuse Opera and WCNY), *Deathtrap* (The Cape Playhouse), *Ragtime* (Theatre Under the Stars). Co-Design credits include *Sally and Tom* (Public Theatre), *Love All* (La Jolla Playhouse). Associate Design credits include *Our Town* (Broadway), *Purlie Victorious* (Broadway), *Once Upon One More Time* (Broadway), *Be More Chill* (Broadway) (London). Education: BFA Costume Design at State University of New York at Fredonia

AUDREY ELAINE HAILES (Assistant Director/ Movement) (she/we) is a movement-theatre artist based up and down the Eastern Seaboard and currently works closely with Maria Bauman as associate artistic director of MBDance. Audrey has had the privilege of collaborative and performative relationships with Nina Angela Mercer, Paloma McGregor, Ebony Golden, Okwui Okpokwasili, Ani Taj, among others and has served as movement consultant for institutions including New York University Abu Dhabi, The Kennedy Center and Atlantic Theatre Co. Our own choreography has been commissioned by Gibney Dance, Dance Theatre Etc, Movement Research, BAAD! and New York Live Arts.

KEVIN GREGORY DWYER (Production Stage Manager) (he/him) Previously at Geva: *How I Learned What I Learned*, *Lady Day at Emerson's Bar and Grill*, *A Christmas Carol 2023*, and *Frida...A Self Portrait*. Regional: *Bandstand*, *Jersey Boys*, *A Chorus Line*, *EVITA* (The REV Theatre Co). National Tours: *The Book of Mormon*. Chicago: *An American in Paris*, Disney and Cameron Macintosh's *Mary Poppins*, *The Color Purple*, *Matilda*, *Mamma Mia!*, *Disney's Beauty and the Beast*, and *Little Shop of Horrors* (Drury Lane Theatre); *Macbeth*, *Q Brothers Christmas Carol*, *Madagascar*, *King Charles III*, and *Othello* (Chicago Shakespeare Theater); *This Is Our Youth* and *Lord of the Flies* (Steppenwolf Theatre Company). Boston: *The Two Gentlemen of Verona*, *Coriolanus* (Commonwealth Shakespeare Company); *Betrayal*, *Private Lives*, *Captors* (Huntington Theatre Company). Proud AEA Member and Emerson College Alum.

KATE DUPREY (Assistant Stage Manager) (she/her) is delighted to be back backstage at Geva. Past credits with Geva include *The Color Purple*, *Lady Day at Emerson's Bar & Grill*, *Constellations*, *Cry It Out* (ASM), *Vietgone*, and *A Christmas Carol* (Run Crew). As a local Stage Manager in the Rochester area, some favorite credits include *Romeo & Juliet*, *The Seagull*, and *Richard II* (The Company Theatre), *The Duchess of Malfi*, and *The Complete Works of William Shakespeare, Abridged* (WallByrd), and *Into the Woods* and *The Drowsy Chaperone* (Geneva Theatre Guild). Currently, she is teaching a class in Stage Management at the University of Rochester. As always, thank you to my family, and my husband for their amazing support.

STAFF LEADERSHIP

ELIZABETH WILLIAMSON (*Artistic Director*)



(she/her) joined Geva as Artistic Director in 2022, to launch the theatre's 50th Anniversary Season. An Obie Award-winning director, Williamson is known internationally for her work as a dramaturg, director, adapter, and producer. Broadway: Matthew López' *The Inheritance* (Tony, Olivier, Critics Circle, Evening Standard, GLAAD, and Drama Desk Awards for Best Play, Outer Critics Circle Honoree), *A Gentleman's Guide to Love and Murder* (Tony Award for Best Musical), *Anastasia*. West End: *The Inheritance*. Off-Broadway: Sarah Gancher's *Russian Troll Farm*, Dan O'Brien's *The Body of an American*. Regional: About Face Theatre, ACT, the Alley, Cal Shakes, Court, Hartford Stage, the La Jolla Playhouse, Oregon Shakespeare Festival, Pioneer Theatre, Steppenwolf, Theatre de La Jeune Lune, TheaterWorks Hartford, TheatreSquared, the Westport Country Playhouse, Williamstown Theatre Festival. Williamson previously served as Associate Artistic Director and Literary Manager at Pioneer Theatre Company in Salt Lake City and as Associate Artistic Director and Director of New Play Development at Hartford Stage. She received a 2007 NEA Fellowship in Literary Translation and is a member of SDC and LMDA. Education: M.St., Oxford University; B.A., Bennington College; trained at the École Internationale de Théâtre Jacques Lecoq.

JAMES HASKINS (*Executive Director*) (he/



him) is honored to serve as Geva Theatre's Executive Director alongside Artistic Director Elizabeth Williamson, and Geva's Board and staff. Prior to coming to Geva, James served as Managing Director of the Guthrie Theater in Minneapolis after having completed a twelve-year tenure as Managing Director of The Wilma Theater in Philadelphia in partnership with Artistic Director Blanka Zizka. James began his work in theater administration at Circle Repertory Company and went on to work with a variety of theaters in New York and Seattle, most notably the Seattle Group Theatre. Upon moving to Philadelphia, he first worked as Managing Director of InterAct Theatre Company, while also serving on the

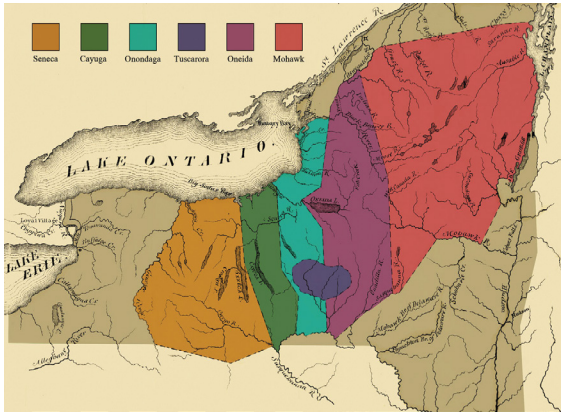
Board of the Theatre Alliance of Greater Philadelphia as Chair of the Barrymore Awards Oversight Committee. He subsequently moved into the Executive Director position of the Theatre Alliance before joining the Wilma. As a theater artist, James acted in many productions before turning to theater administration and is most proud of his directorial and dramaturgical work on the plays of his husband Michael Whistler. James holds an MFA from the University of Washington and a BA from The College of Wooster in Ohio, where he previously served on the alumni board. Following the pandemic shutdown, James joined committees of the Minnesota Arts and Culture Coalition and the Professional Non-profit Theatre Coalition to help build support and funding for arts and culture. In Philadelphia, he served on the Cultural Advisory Committee under former Mayor Michael Nutter, who officiated his wedding ceremony.

ACKNOWLEDGING THE LAND

A land acknowledgement creates a more accurate picture of the history of the lands and waterways we call home and pays respect to the Indigenous People who have stewarded them from time immemorial. At Geva, we offer this statement as part of our anti-racist values and to help us all unlearn and relearn the history that has brought us here to the land we call the United States. With this understanding, we can envision a new path forward, led by the principles of equity and justice.

American society as it exists today owes its identity and vitality to generations from around the world who contributed their hopes, dreams and resources to making the history that led to this moment. Some were stolen and enslaved here against their will, some were drawn to leave their distant homes in search of a better life, and some have stewarded this land for more generations than can be counted. Acknowledging the hardships and atrocities that many peoples have suffered on American soil is critical to building mutual respect and connection across all barriers of heritage and difference. By honoring this truth, we begin this effort to acknowledge what has been purposefully buried.

There are 567 federally recognized Indian Nations (variously called tribes, nations, bands, pueblos, communities and Native villages) in the United States. Additionally, there are tribes located throughout the United States who are recognized by their respective state governments.



Graphic by Eric E. Doxtator

Geva's Acknowledgment

We are gathered in the ancestral and unceded territory of the Onöndowa'ga, or "the people of the Great Hill." In English, they are known as Seneca people, "the keeper of the western door." Together, with the Mohawk, Cayuga, Onondaga, Oneida, and Tuscarora, the Seneca make up the sovereign Haudenosaunee Confederacy. We pay respects to their elders, past and present. Please take a moment to consider the many legacies of violence, displacement, genocide and migration that bring us together here today. And please join us in uncovering such truths at any and all public events.

To learn more about the Native people in our region and the Canandaigua Treaty of 1794, visit ganondagan.org.

Geva Theatre is a not-for-profit theatre company dedicated to creating and producing singular theatre productions and programs that serve the Rochester region and beyond, by illuminating the fullness of our many human experiences.

Founded in 1972 by William Selden and Cynthia Mason Selden, Geva was originally housed in the Rochester Business Institute building on South Clinton Avenue. In 1982, Geva purchased and converted its current space - formerly a NYS Arsenal designed by noted Rochester architect Andrew J Warner and built in 1868 - and opened its new home at the Richard Pine Theatre in March 1985. Geva operates two venues - the 516-seat Elaine P. Wilson Stage and the 180-seat Ron & Donna Fielding Stage.

As one of the country's leading theatre companies and a member of the national League of Resident Theatres, Geva produces a varied contemporary repertoire from musicals to world premieres celebrating the rich tapestry of our diverse community. We draw upon the talents of some of the country's top actors, directors, designers, and writers who are shaping the American Theatre scene.

Geva's Education Department serves thousands of students annually through student matinees, in-school workshops, the acclaimed Summer Academy training program, and other programs. Geva's New Play Development Programming offers new and established writers a nurturing environment from which to take their work to the next level. Geva has presented approximately 400 play readings and workshops since its inception. Nearly 70 Geva-developed plays have had subsequent productions around the country. Geva's Connectivity Department produces multifaceted programs such as *Geva Insights* that deepen the appreciation of the work on our stages, provide opportunities for regional dialogues, and help fulfill Geva's anti-racism commitments through collaborative programming.

An active member of the Rochester community, Geva offers a multitude of opportunities for our audience and community members to engage with live theatre and the country's best artists. Since the breadth of Geva's programming cannot be sustained on ticket sales alone, this contribution to the region's cultural, social and economic vitality is recognized by grants and charitable contributions from federal, state and local government agencies, national and local foundations, and businesses and individuals from throughout the region.

For more information: GevaTheatre.org.

Geva Theatre's 2024/2025 Student Matinee series!

Teachers: Bring your students to an exceptional, professional school-day performance; we'll make it easy, enriching, and fun. When you make a Student Matinee reservation, you're buying more than a ticket; you're choosing a complete educational journey for your students.



Every Student Matinee reservation includes:

- A teacher preview ticket
- 1 complimentary chaperone ticket for every 15 student tickets purchased
- A Discovery Guide (available in both English and Spanish) curated by Geva artist-educators, packed with information about the play, relevant context, suggested discussion questions, and related activities
- A post-show talkback with members of the cast

The Passport Program provides free tickets to RCSD groups and charter schools within the city limits of Rochester. Passport tickets are limited and available on a first come, first served basis.

Visit www.gevatheatre.org/education/ for complete details!

"I find that teaching hard subjects is made easier by coming to it through the arts first. The Discovery guide was incredible. We used it, almost in its entirety. It provided the perfect background information to discuss and prepare them for what they would see. Geva does a phenomenal job of helping to convey the emotional and intellectual accessibility and stimulation of Geva's productions for young people."



"My students were mesmerized and blown away! They are still talking about it days later - particularly the use of movement in storytelling."

"We are a social justice school and having opportunities to bring our students to Geva's shows fits with our mission. Some of our students have been to a live theater production. At the talkback with the cast, the first three hands raised were from my school! This was an invaluable experience."



Geva Theatre's Student Matinees are supported by: William & Sheila Konar Foundation, ESL Charitable Foundation, Daisy Marquis Jones Foundation, Donald F. & Maxine B. Davison Foundation, Rubens Family Foundation, Joseph & Irene Skalny Charitable Trust, Guido & Ellen Palma Foundation, Robert and Susan Touhsaent, Richard & Joan Fenton, Elizabeth Rennert, Cornell/Weinstein Family Foundation, Dr. Tomás C. Hernandez & Dr. Keith S. Reas, and Kathleen and Alfred Laitenberg

RESIDENT STAFF & ARTISTS

ELIZABETH WILLIAMSON (she/her)
Artistic Director

JAMES HASKINS (he/him)
Executive Director

STAFF LEADERSHIP

JOSEPH BIAGINI (he/him)
Production Manager

FRANK DEL VECCHIO (he/him)
Controller

JASMINE B. GUNTER (she/her)
*Resident Director/
Associate Producer*

SARAH HALEY (she/her)
Director of Marketing

GITANA MIROCHNIK (she/her)
Director of Development

THALIA SCHRAMM (she/her)
General Manager

DELANNA STUDI (she/her)
2024/2026 Playwright in Residence

BARON VAUGHN (he/him)
2023/2025 Playwright in Residence

ARTISTIC & MANAGEMENT

FIONA KYLE (she/her)
*Literary Manager
& Artistic Associate*

JILLIAN SAJDA (she/her)
Associate Company Manager

NICOLE STEIN (she/her)
Executive Assistant

AUDIENCE SERVICES

JOHN HAMOLSKY (he/him)
Senior Manager of Guest Services

TIM INTILI (he/him)
Director of Ticketing

NICOLETTE VENTIMIGLIA (she/her)
Bar Manager

ANDY GERMUGA (he/him)
Box Office Supervisor

CARLEA GRANT (they/them)
Assistant Guest Services Manager

NANETTE FALCHI (she/her)
Giftshop Services

ALEX BERARDI (he/him)

SAM KAPLAN (they/them)

HANNAH MORENO (she/her)

ASHLEY ROBB-CROCKETT (she/her)

BRENNAN SAUR (he/him)

MARLI WORDEN (she/her)
Box Office Associates

SUE BELLINGER

MARK DI NITTO (he/him)

JACE JACOBS

CHRIS NOTHNAGLE

KODY ROESE

JENNELL TROPIANO

House Managers

MICHAEL FAMBRO

AUBREY REYNOLDS

J. IAN REYNOLDS

MARY REYNOLDS

BELLE RIVERA

BRIAR ROSE

CHARLES WECKWORTH V

Bartenders

CONNECTIVITY

CHELSEA LACATENA (she/her)
Interim Education Manager

DEJA COTTON (she/her)
Connectivity Assistant - Education

ERITREA HAILE
Connectivity Assistant - Engagement

MELISSA COYLE

JACK LANGERAK

BRIGITT MARKUSFELD

LEELA MUNSIFF

JONATHAN NTHEKETHA

ANDREA PARADA

DELORES JACKSON RADNEY

MARY MÉNDEZ RIZZO

ELIANA ROWE

JEAN GORDON RYON

MJ SAVASTANO

TERRAN SCOTT

DAVID SHAKES

SHAWNDA URIE

KAE WOODRUFF WILBERT

PERRY GROUND,

(ONONDAGA, TURTLE CLAN)

ESTHER WINTER

MARC DAVID WRIGHT

Artist-Educators

SOFIA UBILLA (she/her)

Directing Fellow

COSTUMES

KASSIE KELSO (she/her)
Interim Costume Shop Supervisor

MICHAELA LINCOLN (she/her)
Cutter/Draper

REBEKAH CLOW (she/her)
First Hand

SAMANTHA BURTON (she/her)
Costume Shop Assistant

PAIGE WALDRON (she/her)
Wardrobe Supervisor

FINANCE & OPERATIONS

ANNA BECK (she/her)
Finance Assistant

CLIFF LAMPLEY (he/him)
Facilities Manager

LAURIE MASOOD (she/her)
Finance Volunteer

LAMONT TITUS (he/him)
Environmental Services

LIGHTING

DEREK A. MADONIA (he/him)
Lighting Supervisor

CHRIS NIMICK (he/him)
Electrician/Light Board Programmer

ESTHER WILKINS (she/her)
Electrician

DEVELOPMENT

SEAN BRITTON-MILLIGAN (he/they)
Event Manager

SARAH MAYFIELD (she/her)
Development Coordinator

MARKETING

AMANDA RIEKSTINS (she/her)
Graphic Designer

KYLE OSENBACH (he/they)
Creative/Marketing Assistant

PRODUCTION

JARED LEE MORGAN (he/him)
Stage Operations Supervisor

JULIA BREGY (she/her)
Resident Stage Manager

KEVIN GREGORY DWYER (he/him)
Resident Stage Manager

NATE KELLY-DUMONT (he/they)
Crew Swing/Follow Spot Op

PROPERTIES

THERESA GRANGER (she/her)
Properties Supervisor

BUTCH KANE (he/him)
Properties Artisan

SCENIC ARTISTRY

ALEX STOEHR (he/him)
Scenic Charge Artist

GREY WARRICK (they/them)
Scenic Artist

SCENERY CONSTRUCTION

DAVID CROUSE (he/him)
Interim Technical Director

ELIAS KOCH (he/him)
Lead Carpenter

SAM BURKOVICH (they/their)
Carpenter

V. MILLER (they/them)
Carpenter

HAZEL PENROSE (she/her)
Carpenter

SOUND

ANDREW MARK WILHELM (he/him)
Sound Supervisor

ERINN FRANTZ-BUSH (she/they)
Audio Engineer

OVERHIRE

EMJAY MULLIN
Overhire A2

IAN AVERY
Overhire Deck Crew

SIOBHAN C. HURLEY
Overhire Spotlight Operator

ERIN HOLT (she/her)
Overhire Wardrobe Sub

MADDIE WINTER (she/her)
Overhire Wigs & Makeup

MARK CUDDY
Artistic Director Emeritus

CORPORATE, FOUNDATION & GOVERNMENT PARTNERS

*Geva Theatre gratefully acknowledges the following corporations, foundations and government agencies for their generous support.
(Donations listed are for the time period 11/25/23 to 11/25/24.)*

2024-2025 SEASON SPONSOR

ESL Federal Credit Union

2024-2025 SEASON HONORARY PRODUCER

Dr. Dawn Lipson

\$50,000+

William & Sheila Konar Foundation*
Nixon Peabody LLP
The Blanche & Irving Laurie Foundation
The Shubert Foundation

\$25,000- \$49,999

Ameriprise- Nocon & Associates
Buckingham Properties, LLC
County of Monroe
The Davenport-Hatch Foundation
ESL Charitable Foundation
Mary S. Mulligan Charitable Trust**
New York State Council on the Arts**
New York State Division of Homeland
Security & Emergency Services
WXXI

\$10,000 - \$24,999

Daisy Marquis Jones Foundation
Donald F. & Maxine B. Davison
Foundation*
The Donna Fielding Memorial Fund
Fred & Floy Willmott Foundation
Glover-Crask Charitable Trust
Heveron & Company, CPAs, PLLC
KeyBank
McCarthy's Tents & Events
The Riedman Foundation
Rubens Family Foundation*
Sinclair Broadcast Group
St. John's

Joseph & Irene Skalny Charitable Trust*
Vision Automotive Group
WARM 101.3 Radio
WHEC-TV, LLC

\$5,000 - \$9,999

Arts & Vitality Fund
at the Community Foundation
3 City Center
Crisp Rochester
iHeartMedia/Clear Channel
Broadcasting
The Joseph & Anna Gartner Foundation
M&T Bank
Madeline's Catering
Max A. Adler Charitable Foundation
RG&E***
Theatre Development Fund
- NSYCA/TDF TAP Plus
Volvo Cars Rochester
Woods Oviatt Gilman
WDX FM

\$2,500 - \$4,999

Buffalo Spree Publishing, INC.
Center for Adolescent & Young Adult
Health
Cornell/Weinstein Family Foundation*
GP Flooring
The Gouvernet Arts Fund at
the Community Foundation
Hildebrandt Family Artistic
Enhancement Fund
Labella Associates, P.C.
The LGBT+ Giving Circle at
the Community Foundation
News 8 WROC-TV
Rockcastle Florist
WUHF-TV

\$1,000 - \$2,499

Abilene Bar & Lounge
Airigami
Ames Amzalak Memorial Trust*
Audacy Operations, Inc.
Century Liquor & Wines
Entre Computer Services
Excellus BlueCross BlueShield
The Jane Parker Foundation
The Queenan Foundation
Sinclair Broadcast Group
Tito's Handmade Vodka
Wegmans Food Markets*
WHAM
WRMM-FM

\$500 - \$999

Actors' Equity Foundation
Joan & Harold Feinbloom
Supporting Foundation
Get Caked Bakery***
Harris Corporation
JAZZ 90.1
Rohrbach Brewing Co.
Vanguard Charitable Program
Waldron Rise Foundation

***Education Supporter*

***Literary or New Works Supporter*

****Home for the Holidays Supporter*

We have made every effort to ensure the accuracy of these donor lists. However, if you see an error or omission, please accept our apology, and kindly call the Development Office at (585) 420-2049.



COBBLESTONE
CAPITAL ADVISORS

- Investment Management
- Wealth Management
- Private Investments
- Family Office

(585) 473-3333

*Investment in securities may result in loss of income and/or principal.

ANNUAL FUND DONORS

*Geva Theatre thanks the following individuals for their generous contributions.
(Donations listed are for the time period 11/25/23 to 11/25/24.)*

LEADERSHIP CIRCLE

\$50,000+

Dr. Dawn Lipson
(Honorary Season Producer) †

\$25,000 - \$49,999

Anonymous
Barbara LaVerdi
& Bryan Donnelly
Charis & Rich Warshof †

\$10,000-\$24,999

Anonymous
Barbara & John Bruning †
Philip & Sharon Burke
Patrick & Barbara Fulford †
David & Patricia Gardner †
Dr. Tomás C. Hernández*
& Dr. Keith S. Reas
Elizabeth Rennert* †
Elise Rosenfeld
Eileen Amy Ryan
Mimi & Sam Tilton †
Krestie Utech †
Joyce & William Weir
Helen A. Zamboni
& Steven I. Rosen †

\$7,500-\$9,999

Bonnie Garner
Richard & Kim Gray
Joanna & Michael Grosodonia †
Warren+ & Joyce Heilbronner †
Matthew López & Brandon Clarke
Laurel Pace †
Averil & Michael Rilely
Tom & Tammy Rogers
Vicki+ & Richard Schwartz †
Joan & Ken Slater †

\$5,000-\$7,499

Anonymous
Peggy Boucher †
Elizabeth Caldwell
Betsy & John Carver †
Gloria Culver & Joe Anderson
Joan S. Dalberth
Dave & Nance Fiedler †
Joanne Gianniny †
Norman Horton+
The Geva Group- 40 Years
Joe & Dale Klein
Connie Klein
Glenn & Nancy Koch
Dan & Kiki Mahar
Diane & Jerry McCue
Michael & Frances Millard
Dan & Jo-Ann O'Brien †
Janet S. Reed
Maggie & Charlie Symington †
Susan & Robert Toussaent*

LEADERSHIP CIRCLE (cont.)

John S. Tritten
Janet M. Tyler
Sherwin Weinstein
& Linda Cornell Weinstein* †

\$2,500 - \$4,999

Anonymous (2)
Daniel & Elizabeth Abbas
Jeanine Arden-Ort
& Dr. Daniel Ornt
Robert D. Baden †
Dennis & Mary Bassett
Abby & Doug Bennett
Carol & John Bennett
Nelson A. Blish & Sharon Stiller
Robert & Diane Boni
Ed & Sarah Bullard
David J. & Margaret M. Burns
Margaret & Tim Busch
Essie Calhoun-McDavid
& Bernard McDavid
Center for Adolescent
& Young Adult Health
Suzanne & Allan Chapman
Barbara de Leeuw
Ann Dozier & Guy Martin
Hope Drummond
Bill Eggers & Deborah McLean
Peter Fackler & Kelly Barrett
Stan & Reenie Feingold
Richard & Joan Fenton*
Paul & Mary Fromm³
Ellen Garfinkel
Pam Giambrone †
Lori & Scott Green
Christina Gullo & John A. Mueller
Jane Hasselkus & Richard Edic
Nan & Tom Hildebrandt †
Jean Horton
Dr. Jack & Harriette Howitt
Emily Jones & Deborah Hughes
Hon. Joan S. Kohout
Paul & Lynne Kroner
Abhas Kumar
& Chetna Chandrakala
Harold & Christine Kurland †
Diane & Stephen LaLonde
Connie L. Leary
Jennifer Leonard
& David Cay Johnston
Edith M. Lord
Carol & Nick Love †
Sarah Mangelsdorf & Karl Rosengren
Annabelle Martin
Lisa Martinez DeVinney
Faheem & Laurie Masood
Pamela McGreevy
Peter & Beth Messner
Steve Metzger
Barbara Mitacek**

Bob Neale
Rhonda Noto
Frank Novak & Paul Muto
Shree Pandya
Don & Robin Pulver
Dr. Gerald & Maxine Rosen
Drs. Carl & OJ Sahler
Mr. Harold Samloff
Gary B. Schaefer
Dick Schieck & Joan Semrau
Wolf & Elizabeth Seka
Kelly & Kathleen Shea
Gail Shoemaker
Malcolm & Elaine Spauil
Franceen Elias-Stein & Todd Stein
James & Georgine Stenger
Judy & Richard Stiehler
Bob & Gayle Stiles
Jim & Pam Stoffel
Joshua Stubbe & Katie Baynes
Elizabeth M. Teall
Wyndy Turner
Nina Walker
Dr. Stephen R. Webb
Carol J. Whitbeck
John Williams
Elizabeth Williamson
& Jennifer Tennant
Herb Winkelmann, Jr.

\$1,500 - \$2,499

Catherine Angevine³
Barbara Berman
Drs. Karen & Mark Blazey
Mary & Brendan Brady²
John & Linda Buttrill
Keith & Celeste Cleary⁵
Carol Condem+
Susan & Frank Crego³
Mr. Raymond Dreher
& Dr. Elaine Tunaitis
Louise W. Epstein²
James & Kathy Farrar
Sue & Jim Hæfner
Terry & Eileen Hartmann
Nancy D. Hessler
Victoria Kaminski
Nanci Malin & Abe Weiss
Wes & Mary Micket⁴
Nannette Nocon
& Karl Wessendorf †
William J. O'Connor Jr.³
David & Marjorie Perlman
Elke Phillips⁵
Karen & Don Pryor
Dr. Ramon & Judith Ricker
Sharon & Leal Smith²
Dr. Sidney & Barbara Sobel †
Rev. Nancy D. Stevens
& Mr. David L. Williams⁵

ANNUAL FUND DONORS

Judy & Erik von Bucher
John & Melanie Ward
Philip & Anne Wehrheim
Stephen Wershing
Mrs. Kay R. Whitmore+
Charlotte J. Wright

\$1,000 - \$1,499

Anonymous
Pamela & Todd Allen
Jeanne M. Beecher²
Suzanne Bell & Chris Brown
Eric & Marcia Birken
Michael & Elizabeth Burns
Mary Ellen Burris
Mary Allison Callaway
Catherine Callery & Michael Nazar
Paula & Christopher Carter
Katherine Cove³
Doug & Stephanie Dickman
Joan Feinbloom
Ann & Steve Fox³
Bob & Bobbie Freitag
M. Lois Gauch
Don & Natalie George
George & Helen Greer Advised Fund
At The Community Foundation
Bridgitte Gueldenpfennig
Elmer C. Hartman
H. Larry & Dorothy C. Humm
Ebets & Tom Judson³
Judy & Norm Karsten
Arnold Kovalsky
Karen Kral
Marcy & Ray Kraus
Amy Libenson & Brett Shulman
Patrick Macey & Jerry Casey
Bruce & Eleanor McLearn
Don & Roxann Muller
Dr. Gary & Ruth Myers³
Kathy & Ted Nixon
Lois & John Palomaki
Mary Jane Proschel
Ken & Sheila Reasoner
Marvin Ritzenthaler & Steven Jarose
Robert & Hedria Saltzman
Francie & Larry Schenck
Neal & Pam Sherman
Richard R. Spellicy
Jacqueline Sperandio
Sheree Usiatynski & David Evans
Jim & Linda Varner
Jean Carty Weaver
Pierce & Elizabeth Webb
Kathy Wheat & Fred Schulte
Patty Yarnel

\$500 - \$999

Anonymous
Martin Abraham
David & Marca Anderson
Susan Anderson
David & Jan Angus³
Betsy & Gerald Archibald
Virginia Bachelor & Skip Battaglia
Gloria J. Baciewicz

Deanna G. Baker**
Jim & Linda Baroody
Jim & Laurie Barr
Jeff & Kathy Bowen⁵
Stephanie Caffera
Ed & Maggie Cavalier
Bill Chandler
Victor Ciaraldi
& Kathleen Marchaesi-Ciaraldi
John & Alison Currie
Gabriel Del Vecchio
Dan & Jody DiLoreto
Terry Doherty
Victoria Doyle
Janice B. Durfee
Lynn & Pam Eberhardt
Marjorie & Stephen Elder
Sherman & Anne Farnham
Lynn & Neil Farrar⁵
Andrea & Richard Feldman
David & Anne Ferris
Elizabeth Fisher
Richard Galvin
The Gill Family Fund
Ellen Goldenberg
William & Susan Gornall
Sharon Gray
Joe & Linda Hanna
Carol K. Hardy
Brud & Molly Hedges
Katherine Herrmann
A. Dirk & Linda Hightower
John & Barbara Holder⁵
Dan & Sandy Hollands⁵
Audrey Holly
Louise D. Holmes
John & Bonnie Hood*
Douglas & MaryAnne Jones⁵
Cornelia Kamp
Michael Keefe & Joann Surre-Keefe
Karen & Eugene Kehoe³
Edward E. Klehr²
Mark & Mona Friedman Kolko
Ellen & Charles Konar
Michael & Marcy Kucharski
Werner & Susan Kunz
Kathleen & Alfred Laitenberger*
Thomas & Connie Lathrop
Thomas & Terrie Lee³
Doris & Austin Leve
Meg & Bill Lloyd⁵
Christopher & Susan Luedde
F.M. Paul Lyons
Thomas & Sandra Madejski⁵
Massie Family Fund at Rochester
Area Community Foundation
Thomas & Betsy Matthews
Judie & George Mayo
H. Winn McCray
Ralph & Martha Meyer
Daniel M. Meyers
Sanford & Jill Miller
Stacey Miller
Susan & J. Scott Miller
Jonathan Mink & Janet Cranshaw
Emily Neece & Alan Ziegler

Helen Newman
Dr. Alan Nye
& Nancy BB Meyer-Nye
Marie & Donald Oakleaf⁵
Vinny Orlandini
Maureen & Marty Palumbos
Eric & Penelope Pankow
Marian Payson & Helen Wiley
Terry Platt
Thomas & Nancy Poeth⁵
Dr. Brock Powell
Marjorie Power
Edwin & Roberta Przybylowicz
Mr. & Mrs. Andrew Publow
Ransford Family Charities
Abby & Josh Reinhard
Valerie & Stefan Reuss
John Rodriguez
Steve Rosen & James Wood
Deborah Rubens
Richard & Louise Sadowski
Paul Schaeffer
Caroline Schultz
Jim & Daria Shaw
Joseph E. Simpson
Cliff Smith & Bernie Todd Smith
Jim & Marie Sorrentino
Eleanor Stauffer
Richard & Sandy Stein
Rob & Janet Stewart
Edward Tanner & Elizabeth Treiber
Meg & Tom Therikidsen
Sue & Karl Thielking⁵
Scott Turner
& Mary Worboys-Turner
Wayne & Anne Vander Byl
Anne Wallace
Benjamin & Sandra Wallace
Jamie & Sally Whitbeck
Susan & Paul Wilkens
Kitty J. Wise
Susan & Larry Yovanoff
Eric I. Zeller Fund at Rochester Area
Community Foundation
Shirley D. Zimmer-Kidd
Ted & Marcia Zornow

\$250 - \$499

Anonymous (2)
Carol Adler
Michael Amorese
Bob & Dawn Auerhahn
Mary Jane Bafundo
Lon Baratz & Joseph Arena
Walter Beecher
Matt Belanger & Carol McKenna
Jon & Pat Bertucci
Linda M. Betstadt³
Bette Blakeney & Jim Dulmage
Nancy Bloom & Alan Cohen
Dennis & Amy Boike³
Patricia Bradley
Patricia Braus & Edwin Lopez
Ken & Kathy Brickell
Lori Busch
Jane Capellupo

ANNUAL FUND DONORS

Jeannette Carra
 Harriet & Jeff Carter²
 Nancy Castro
 Tony Cinquino
 Jack & Barbara Clarcq
 E. A. Claypoole
 Kathleen Cloonan
 Dennis & Sharon Conheady
 Toby Cook Family Fund
 Carol & Stuart Cooper
 Richard & Claire Damaske
 Joe & Judy Darweesh³
 Rachel & Jimmy DeGuzman
 Alice DeMallie
 Joseph DeRuyter³
 Natalie Dickerson
 The Dominas Family
 Joan Dwyer
 Samuel L. Edwards
 & Judith K. Rickey
 Trevor & Elizabeth Ewell
 Matthew Fleig
 Barbara L. Frank
 Lisabeth Frarey & Michael Christie
 Bruce & Elizabeth Freeland
 Gerald & Pamela Garavuso
 Robert Goeckel & Gay Greene
 Cynthia Goetzmann
 Joy Goodman & John Sawyer
 William & Ruth Grace
 Richard & Kathy Grunow
 Mary E. Haverfield³
 A. Scott Hecker
 Jeff & Ruth Hedin
 Maureen+ & Ken Hendel
 Donna Himmelberg
 James & Betsy Hoefen
 Ellen Horey-Thiede
 James & Sherrill Ison
 Mark Jacoby
 Drs. Nadette Jacob & Jules Zysman
 Carolyn Jones
 Rabbi Alan & Jan Katz
 Drs. Don & Nahoko
 Kawakyu-O'Connor
 Robert G. Kimmel
 Wally & Diane Knox
 Dorothy Korn

David & Andrea Lambert
 Richard & Linda Lawrence
 John Lebens & Florence Higgins
 Phillip & Susan Lederer
 Litt Family Fund
 Marcia Lowry
 Patricia Marks
 Gail Mazur
 Tom & Emily McCall³
 William McCleary & Maxine Long
 Merri-Lou McKeever
 Chris & Karen Mesoella
 Richard & Mary Moglia-Cannon
 David & Nancy Munson
 Thomas & Ronnie Nescot
 Charlie Owens
 Phil Palumbo
 Rick Papaj
 Dolores F. Parlato
 Yonite Pentelton
 Thomas Petrillo & William Reamy
 Louisa Pierson
 Dr. Lee D. Pollan
 Craig & Becky Prophet
 Mark Raeside
 James G. Reed
 Nancy Rice
 Dawn Riedy & David Berg
 Ann & Robert Riemer
 Michael & Linda Riordan
 John Robb & Mary Jo Karpenko
 Russell R. Roberts
 Raul Rodriguez
 Charles & Carolyn Ruffing³
 Gerry & Fred Sauter
 Kenneth Schirmuhly
 Jon & Katherine Schumacher²
 Anthony & Gloria Sciolino
 Scott Sherin
 Norm & Jane Silverstein
 Greg & Karen Sloan
 Carolyn Smith
 Ann H. Stevens
 & William J. Shattuck
 Thomas & Linda Sullivan
 Thomas & Rose Swartz
 Robert H. Thompson
 & Bonnie DeVinney

Helen Urzetta Tortorici
 Charles & Marian Turner
 Sandra Vallot
 Patricia H. Wehle
 Dana Weiss & Carol Ebersole-Weiss
 John & Laurie Witmeyer³
 Richard & Caroline Yates
 Eric Zeise & Ellen Henry
 Charlie & Judy Zettek³

Other Donors included in Visionary Society †

Anonymous (2)
 Robert August
 Helen H. Berkeley
 Joyce & Allen+ C. Boucher
 Sergio & Mary Ann Esteban
 The Gouvernet Arts Fund at the
 Community Foundation
 Gwendolyn Hoffberg
 Jack & Barbara Kraushaar
 Dan & Nancy Loughran
 Jeanne B. McHugh+
 Mike & Mary Ninnie
 Jane Parker & Fran Cosentino
 Wolfgang Pfizenmaier
 Stephen I. Rosenfeld+
 William H.+ & Anne Saunders
 Kim & Janet Tenreiro
 Elizabeth Vanhorn+
 Deborah Wilson

† Donors whose lifetime philanthropic commitment totals over \$100,000

³Donors who have made a three-year commitment to Geva's Annual Fund

*Education Supporters

**Literary or New Works Supporter

+Deceased

We have made every effort to ensure the accuracy of these donor lists. However, if you see an error or omission, please accept our apology, and kindly call the Development Office at (585) 420-2049.

PLAYWRIGHT'S SOCIETY



Geva Theatre gratefully recognizes the following generous donors who have made a three-year commitment of \$2,500 or more to Geva's Annual Fund.

(Donations listed are for the time period 11/25/23 to 11/25/24.)

Anonymous
Daniel & Elizabeth Abbas
Jeanine Arden-Ornt
& Daniel Ornt
Dennis & Mary Bassett
Katie Baynes & Joshua Stubbe
Carol & John Bennett
Nelson A. Blish & Sharon Stiller
Robert & Diane Boni
Peggy Boucher
Barbara & John Bruning
Philip & Sharon Burke
David J. & Margaret M. Burns
Margaret & Tim Busch
Essie Calhoun-McDavid
& Bernard McDavid
Betsy & John Carver
Center for Adolescent
& Young Adult Health
Gloria Culver & Joe Anderson
Ann Dozier & Guy Martin
Hope & Lance Drummond
William Eggers
& Deborah McLean
Franceen Elias-Stein
& Todd Stein
Peter Fackler & Kelly Barrett
Richard & Joan Fenton
Dave & Nance Fiedler
Paul & Mary Fromm
Patrick & Barbara Fulford
Bonnie Garner
Lori & Scott Green
Joanna & Michael Grosdonia

Christina Gullo
& John A. Mueller
Jane Hasselkus & Richard Edic
Warren+ & Joyce Heilbronner
Dr. Tomás C. Hernández
& Dr. Keith S. Reas
Jean Horton
Norman Horton+
Emily Jones & Deborah Hughes
Paul & Lynne Kroner
Abhas Kumar
& Chetna Chandrakala
Harold & Christine Kurland
Diane & Stephen LaLonde
Barbara LaVerdi
& Bryan Donnelly
Jennifer Leonard
& David Cay Johnston
Edith M. Lord
Carol & Nick Love
Dan & Kiki Mahar
Annabelle Martin
Lisa Martinez DeVinney
Faheem & Laurie Masood
Diane & Jerry McCue
Peter & Elizabeth Messner
Steve Metzger
Michael & Frances Millard
Barbara Mitacek
Bob Neale
Nannette Nocon
& Karl Wessendorf
The Pace Family Fund
Shree Pandya

Don & Robin Pulver
Elizabeth Rennert
Averil & Michael Riley
Tom & Tammy Rogers
Dr. Gerald & Maxine Rosen
Mrs. Carl & OJ Sahler
Harold & Judy Samloff
Gary B. Schaefer
Richard & Vicki+ Schwartz
Gail Shoemaker
Joan & Ken Slater
James & Georgine Stenger
Bob & Gayle Stiles
Jim & Pam Stoffel
Maggie & Charlie Symington
Elizabeth M. Teall
Mimi & Sam Tilton
Susan & Robert Touhsaent
John S. Tritten
Wynndy Turner
Janet M. Tyler
Krestie Utech
Charis & Rich Warshof
Sherwin Weinstein
& Linda Cornell Weinstein
Joyce & William Weir
Carol J. Whitbeck
John Williams
Elizabeth Williamson
& Jennifer Tennant
Herb Winkelmann, Jr.
Helen A. Zamboni
& Steven I. Rosen

We have made every effort to ensure the accuracy of these donor lists. However, if you see an error or omission, please accept our apology, and kindly call the Development Office at (585) 420-2049.

FOR SOME, FEELING

LEFT OUT

LASTS MORE THAN A MOMENT.

WE CAN CHANGE THAT.

We've all had moments where we've felt we didn't belong. But for people who moved to this country, that feeling lasts more than a moment. Together, we can build a better community.

Learn how at BelongingBeginsWithUs.org

BELONGING
BEGINS WITH **US**



IN MEMORY OF ...

Judy Andreano

Marilynn Andreano
Anne Hilliard
Marquerite Martellotta

Audrey Ashley

Mimi & Sam Tilton

Jeanne C. Baden

Joanna & Michael
Grosodonia

Jane Biggs

Sharon & John Carr

Dennis Bookshester

Dr. Gerald & Maxine
Rosen

Carol Browne

Stephen Slade

Judy Buchanan

Ray & Sandy Buchanan

Lorie Chavkin

Robert Chavkin

Dr. Salvatore Dalberth

Joan S. Dalberth

Bill C. Davis

Patricia Marks

Trish & Teale Dominas

Love, Glen

Linda Doty

Peter & Shannon
Reynolds

Morris Eaves

Dr. Gerald & Maxine
Rosen

Richard H. Eggleston

Louise M. Eggleston

Marlene Elkin

Ross Elkin

Erwin & Kathleen Englehart

Carolyn Jones

Peggy Ervin

Mark & Nicki Cottle

Linda W. Ferris

Frank Ferris

Marilyn Galley

Joseph Galley

Suzanne Gouvernet

Kate Bennett
Mary Bishop
Donna Borgus
Susie Cohen
Shirley Dawson
Bonnie Garner
Judith Graper
Elinor Grinols
Joanna & Michael
Grosodonia
Pamela & Ken Hines
Deborah Lattime
Carol & Nick Love
Marcia Lowry
Staffan & Lee Lundback
Shree Pandya
Susan Rogers
Jim & Daria Shaw
Peter & Deby Springer
Ingrid Stanlis
Maggie & Charlie
Symington
Mimi & Sam Tilton
Scott Turner
& Mary Worboys-Turner
John Williams

Klaus Gueldenpfennig

Brigitte Gueldenpfennig

Maureen Hendel

Kenneth Hendel

Betty & Morris Herman

Phillip & Susan Lederer

Norman Horton

William & Laura Garrison
Joanna & Michael
Grosodonia
William Mcguigan
Carol & Nick Love
David & Marjorie
Perlman
Laura J. Sadowski
John Williams

Dee Kamp

Cornelia Kamp

Roberta Katz Sacks

Dr. Gerald & Maxine
Rosen

Sharon Kimmel

Robert Kimmel

Ed Kneetopkse

Sharon & Carl Wheat

Ann G. Kubiak

John Schell

Adeline Lesk

Dr. Gerald & Maxine
Rosen

John Meyer

Dr. Gerald & Maxine
Rosen

James Miles

Dr. Gerald & Maxine
Rosen

JoAnne Mueller

Jodi Barbera
Lynn Davison
Kathy Gullo
Angela Kakar
JoAnn Kane-DeMott
Dorothy Korn
Valerie Priester
Susan Reeb
Ivana Ripley
Linda Rubens
Jacqueline Ryan
Sheridan Hill
Elementary School
Villa of Hope

Jeanette Neuer Hauck

Philip Neuer

David Ortman

Susan Anderson

Charles Osgood

Dr. Gerald & Maxine
Rosen

Kathleen Piper

Travis Piper

Steve Rosenfeld

Ellen Goldenberg

Jay Ross

Dan Ross

Vicki Schwartz

Joanna & Michael
Grosodonia
Mimi & Sam Tilton

Maureen Margaret Sexton

Janice A. Geddes
Dawn Mastrogiacomio

Murphy Shapiro

Mary Fenton

Bea Siegel

Dr. Gerald & Maxine
Rosen

Michael Slade

Carol & John Bennett
David Garretson
Abigail Packard
Katherine Smith

Barbara Szulgit

Thomas & Virginia
Mulford

Louise Vigdor

Joanna & Michael
Grosodonia
John Williams

Margene Wagstaffe

& Lois Anderson
Marcy & Ray Kraus

Catherine Warren Tanner

Edward C. Tanner &
Elizabeth A. Treiber

Rudy Weingart

Dr. Gerald & Maxine
Rosen

Robert Whitmore

Mary Ann Whitmore

We have made every effort to ensure the accuracy of these donor lists. However, if you see an error or omission, please accept our apology, and kindly call the Development Office at (585) 420-2049.

TRIBUTES

IN HONOR OF ...

Sandra Bills

Dawn Hampsey

Sean Britton-Milligan

Shree Pandya

Laura Chekow

Ellen Goldenberg
Raymond & Pat Naber

**Clients & Friends of 20/20
Wealth Solutions**

Scott Zakalik

Linda Cornell Weinstein

Roberta Borg
Isobel Goldman
Carol & Nick Love

Renata Corrado-Green

Katie & Matthew Comeau

Hope Drummond

Clarice Brown
Velta Rouchon

Bonnie Garner

Patti Donoghue

**Joanna & Michael
Grosodonia**

Shree Pandya

Christina Gullo

Carol & Nick Love
Gerianne Puskas
Shree Pandya

John Hamolsky

Nannette Nocon

Lisa Helen Hoffman

William & Priscilla Petersen

Barbara LaVerdi

Rob & Janet Stewart

Carol Love

Shree Pandya
Cassandra Ramos

Christopher Mannelli

Shree Pandya

Ligaya Nocon

Linda Epstein & Robin
Benmergui

Nannette Nocon

Shree Pandya
Nancy Sverdluk

Shree Pandya

Maggie & Charlie Symington

Maxine Rosen

Clare Rotenberg
Arline & Warren Seideman

Elise Rosenfeld

Ellen Goldenberg

Laura J. Sadowski

Patti Donoghue
Maggie & Charlie Symington

Alana Sansone

Shree Pandya
Maggie & Charlie Symington

Jeanne Sloan

Greg & Karen Sloan

Mimi & Sam Tilton

Louisa Pierson

John Williams

Charlie Owens
Maggie & Charlie Symington

**Elizabeth Williamson
& Jen Tennant**

Daniel M. Meyers
University of Rochester



**MY SHELTER
PETS ARE
MY BEST
FRIENDS**

THESEHELTERPETPROJECT.ORG





Geva Theatre gratefully acknowledges the generosity of the following friends of the theatre who have formalized their commitment to Geva in their estate plans:

Anonymous (2)
Jeanne M. Beecher
Helen H. Berkeley
Allen C. Boucher*
Beverly T. Bowen*
John & Betsy Carver
Derek & Janice Chapman*
Glenn & Rebecca Fadner
Donna Fielding*
Elizabeth Fisher
David & Linda Friedman
Jay+ & Betsy T. Friedman
Patrick & Barbara Fulford
Julia Grant
Jean Edgcumb Groff*
Richard & Marilyn+ Hare
Warren* & Joyce Heilbronner
Drs. Tomás D. Hernández
& Keith S. Reas

Nancy D. Hessler
David L. Hoffberg*
Norman Horton+
Nancie R. Kennedy*
Jack & Barbara Kraushaar
Drs. Dawn & Jacques+ Lipson
Richard Malinich*
Jeanne B. McHugh*
Ernestine W. Murray Chandler*
Eunice* & Donald Naulin
Emily Neece & Alan Ziegler
Dolores B. Owens*
Dr. Ramon & Judith Ricker
Marie Roberts
Dr. & Mrs. Harry Rosen
Stephen I. Rosenfeld*
Laura J. Sadowski
James G. Scanzaroli*
Richard & Vicki* Schwartz

Joan & Ken Slater
Ms. Rusty Smith*
Frederick & Mabel Stehler*
Maggie & Charlie Symington
Kim & Janet Tenreiro
Janet & John R. Tyler, Jr.*
Brad VanAuken
Elizabeth VanHorn*
Sherwin Weinstein &
Linda Cornell Weinstein
Henry W. Williams, Jr.*
Catharine J. Wise
John & Laurie Witmeyer
Robert B. Wolf
& Mary Alice Wolf*
Helen A. Zamboni

* Gift has been realized
+Deceased

We would be pleased to know if you have included Geva in your estate plans so that we may appropriately honor you.

For information about the Legacy Society, please contact the Development Office at (585) 420-2049.

We have made every effort to ensure the accuracy of these donor lists. However, if you see an error or omission, please accept our apology and kindly call the Development Office at (585) 420-2049.

Geva's Audio Description Program is named after

LISA HELEN HOFFMAN

who fearlessly advocated for access to the arts for individuals who are blind or low vision.

She will always be remembered.

October 2019

**Advertise with us today-
we have your platform!**

(716) 972-2250

Buffalo Spree

Publishing, Inc.

buffalospree.com

CURTAIN CALL SUPPORTERS

*Geva Theatre thanks the following donors for their generous contributions to
Curtain Call 2024, the theatre's annual fundraising gala.*

PRESENTING SPONSOR

Nocon & Associates
A private wealth advisory
practice of
Ameriprise Financial Services,
LLC.

DIAMOND SPONSOR

ESL Charitable Foundation

PLATINUM SPONSOR

Barbara LaVerdi & Bryan Donnelly
Madeline's Catering LLC
RG&E

GOLD SPONSOR

Philip & Sharon Burke
Sam & Mimi Tilton
GP Flooring Solutions

SILVER SPONSOR

LaBella & Associates
Dennis & Mary Bassett
Barbara Bruning & Hope
Drummond
East House
Diane McCue
Robert Neale & Richard Porlier
Helen Zamboni

BRONZE SPONSORS

Jeanine Arden-Ornt & Dr. Daniel
Ornt

PADDLE CALL DONORS AND ADDITIONAL SUPPORT

(Donors of \$250 or more)

Anonymous
M&T Bank
Martin & Nancy Abraham
Jim & Laurie Barr
Jacob L. Barragato
Dennis & Mary Bassett
Patricia Beaumont & Len Swain
Kenneth & Kathleen Brickell
Marjorie Bricks
Barbara Burke
Philip & Sharon Burke
Michael & Elizabeth Burns
David J. & Margaret M. Burns
Margaret & Tim Busch
Lori Busch
Paula & Christopher Carter
Shirley Cirillo
Michael Clark
Keith & Celeste Cleary
Sherwin Weinstein & Linda
Cornell Weinstein
Frank & Susan Crego
Barbara de Leeuw
Rachel & Jimmy DeGuzman
Alice DeMallie

Terry Doherty
Victoria Doyle
Joan Dwyer
Dave & Nance Fiedler
Carolyn Foti
Marilynn Garbarino
Bonnie Garner
Bill Garrison
Jon & Kathy Gorom
Richard and Sharon Gray
Joanna & Michael Grosodonia
Richard & Kathy Grunow
Christina Gullo & John A. Mueller
Jane Hasselkus & Richard Edic
Katherine Herrmann
Laura Hopps
Sarah Kroetz
Abhas Kumar & Chetna
Chandrakala
Thomas & Connie Lathrop
Barbara LaVerdi & Bryan Donnelly
Michelle Lee
Jennifer Leonard & David Cay
Johnston
Lisa Martinez DeVinney
Chris & Karen Mesolella
Peter & Elizabeth Messner
Peg Meyers
Sally Millick
Mary A. Mills
Ligaya Nocon
Nannette Nocon & Mr. Karl
Wessendorf
Rhonda Noto
Dan & Jo-Ann O'Brien
William J. O'Connor Jr.
Vinny Orlandini
Tom & Peggy Osenbach
Charlie Owens
Rick Papaj
Yonite Pentelton
Robert & Maria Postgate
Tony Quercia
Raul Rodriguez
Marlene Rogalski
Christine Schaller
Craig Shaw
Kelly & Kathleen Shea
Scott Sherin
Pam & Neal Sherman
Malcolm & Elaine Spaul
Kiley Sullivan
Sam & Mimi Tilton
Wynndy Turner
Stephen R. Webb
Doug & Judith A. Webster
Carol J. Whitbeck
John Williams
Susan Yovanoff
Louis Zambelli

IN KIND SUPPORT

Airigami
Billsboro Winery
Century Liquor and Wines
Conolly Printing
Empire Digital Signs
Entre Computer Services
Rockcastle Florist
Gourmet Goodies
Genesee Brewing Company
Madeline's Catering LLC
Mundell Modern Pixels
Photography
Tito's Handmade Vodka

AUCTION & WINE DONORS

(Donors of \$250 or more)
MAE Beads
Rochester Red Wings
Ape and Canary
Ethan Allen Pittsford Design
Studio
Pinnacle Wine & Liquor
Wines for Humanity
Drag Me to the Stage LLC
Locust Hill Country Club
California Closets
The Strong National Museum
of Play
Rochester Gay Men's Chorus
ImageOut
L'Objet Wines
Hana Pilates & Bodyworks
Iron Smoke Distillery
Landmark Society of Western
New York, Inc.
New York Kitchen
Tito's Handmade Vodka
Finger Lakes Opera, Inc.
Susan B. Anthony Museum
& House
Scott Miller Salon & Spa
Billsboro Winery
Tantalo Fine Portraits
House of Guitars
Corn Hill Navigation
Billbravago LLC
Black Button Distilling
Madeline's Catering LLC
Century Liquor and Wines
Body20-Pittsford
Philip Burke
Margaret Busch
Sam & Mimi Tilton
Paul Guglielmo
Carol Love
Nannette Nocon
Charlie Owens
Shree Pandya
Helen Zamboni

GOVERNMENT SUPPORT

Geva Theatre gratefully acknowledges the support of



The New York State Council on the
Arts, with the support of Governor
Kathy Hochul and the New York
State Legislature

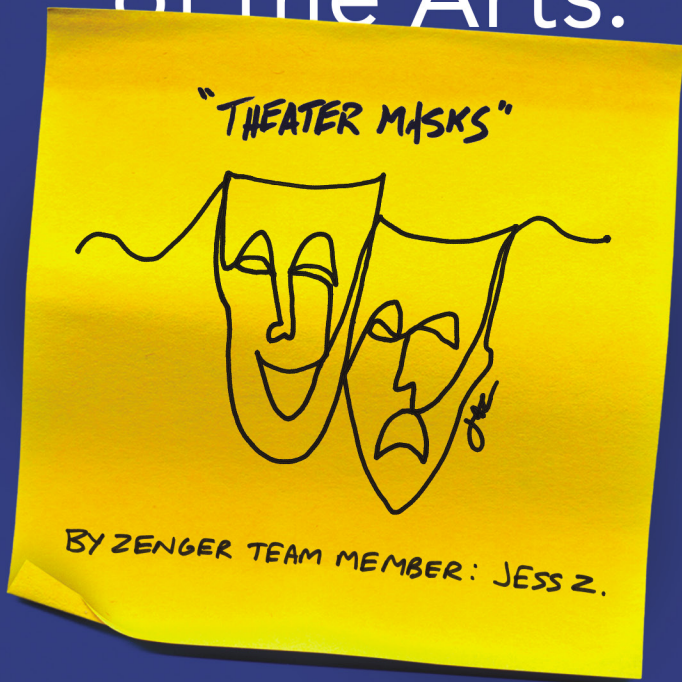


The County of Monroe
and the County
Executive Adam Bello



Empire State Development
- Division of Tourism -
I LOVE NEW YORK

Proud supporter of the Arts.



Art is within reach and should be celebrated by everyone.

777 East Park Drive
Tonawanda, NY 14150

716.871.1058

 Zenger Group

Smart. Print. Now.

zenger.com



**We can do this.
Breathe.**

**Love,
Your Mind**

P.S. Find mental health resources

LoveYourMindToday.org





You'll Love What You Hear

HART
Hearing & Balance
CENTERS

Providing hearing care and assistive devices for over 40 years.
You're always seen by a Doctor of Audiology.
(585) 266-4130 | HartHearing.com

Brighton | Brockport | Fairport | Greece | Irondequoit

★ LOUIS S. WOLK
JCC
ROCHESTER



Tickets at
jcccenterstage.org



**February
1-16**

Featuring music from

**QUEEN
LINDA RONDSTADT
THE EAGLES
MICHAEL JACKSON
FLEETWOOD MAC
...and more!**

Sponsored by:

 **Duda Family Foundation**
Jewish Home Debby Goldman

JCC Hart Theater | 1200 Edgewood Ave. Rochester, NY 14618

Act
your
age,
they
say!



We agree. Feel free to act whatever age you want. We'll be here, welcoming all, with innovative new ways to support older adults. As much or as little as needed. Learn more at [JewishHomeRoc.org](https://www.JewishHomeRoc.org).

 **Jewish Home**
Come be you

INDEPENDENT & ASSISTED LIVING | SHORT-TERM & OUTPATIENT REHABILITATION
NEUROBEHAVIORAL REHABILITATION | SKILLED NURSING | MEMORY CARE
HOME CARE | ADULT DAY HEALTH CARE | PERSONALIZED PRIMARY CARE