

**KeyBank** 

PRESENTS

# A Christmas Carol

**Geva**  
THEATRE

Written by  
**CHARLES DICKENS**

Adapted by  
**HARRISON DAVID RIVERS**

In collaboration with  
**SALLY LOBEL**

Directed by  
**ELIZABETH WILLIAMSON**

Choreography by  
**ASHLEIGH KING**



**November 23 - December 29, 2024**

Proudly  
supporting  
the arts.



585.232.6500

**HSE**  
Harter Secret & Emery LLP  
ATTORNEYS AND COUNSELORS

[hselaw.com](http://hselaw.com)



Harter Secret & Emery LLP  
ATTORNEYS AND COUNSELORS

[hselaw.com](http://hselaw.com)



spend the  
**HOLIDAYS**  
with your



WED  
**NOV 27**  
7 PM

FRI  
**NOV 29**  
2 & 7 PM

SAT  
**NOV 30**  
2 & 7 PM

SUN  
**DEC 1**  
2 PM

KODAK HALL  
AT EASTMAN  
THEATRE

**THE NUTCRACKER**

**Tara Simoncic, conductor**  
**Rochester City Ballet**  
**Bach Children's Chorus of Rochester**

Your Rochester Philharmonic Orchestra and Rochester City Ballet celebrate 25 years of The Nutcracker at Kodak Hall at Eastman Theatre! This timeless tale of wonder and imagination has become a Rochester holiday tradition. Be whisked away to a magical land of sparkling snow and delectable sweets as delightful dance pairs with Tchaikovsky's unforgettable score. This beloved story of a young girl's Christmas Eve dream never fails to touch the heart!



THOMAS RODRIGUEZ

**THURSDAY ONLY!**

THU  
**DEC 12**  
7:30 PM

KODAK HALL  
AT EASTMAN  
THEATRE

**HANDEL'S MESSIAH**

**Christopher Warren-Green, conductor**  
**Michael Leopold, theorbo and baroque guitar**  
**Rochester Oratorio Society**  
**Nicole Cabell, soprano**  
**John Tessier, tenor | Matthew Rose, bass**

Take in the transcendent beauty of Handel's Messiah live, where a heavenly chorus and majestic orchestration make for an unforgettable celebration. Join us for an enchanting evening filled with soaring arias and iconic melodies, including the rousing "Hallelujah" chorus, which will resonate with you all season long.



FRI  
**DEC 20**  
8 PM

SAT  
**DEC 21**  
2 & 8 PM

SUN  
**DEC 22**  
2 PM

KODAK HALL  
AT EASTMAN  
THEATRE

**GALA HOLIDAY POPS!**

**Jeff Tyzik, conductor**  
**Festival High School Chorale**

Celebrate the winter holidays with Principal Pops Conductor Jeff Tyzik, your RPO, and the Festival High School Chorale! For more than three decades, Gala Holiday Pops has been one of Rochester's favorite traditions and a welcome respite from the hustle and bustle of the season.

SUPPORTED BY:



JOYCE KING

24/25 SEASON & SERIES SPONSORS:



**RPO.ORG**  
**454.2100**



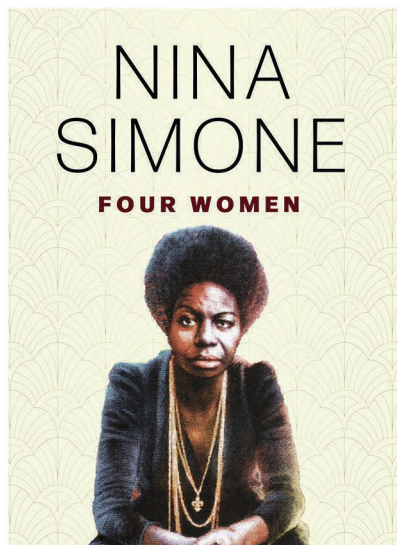
**MUSIC THAT moves.**



GEVA THEATRE'S 24/25 SEASON SPONSOR

# COMING UP NEXT...

ON GEVA'S WILSON STAGE



JAN 14 - FEB 09

September 16, 1963. When Nina Simone heard that four Black girls had been killed in the bombing of the 16th Avenue Church in Birmingham, Alabama, her first impulse was to try and build a zip gun; instead she channeled her rage into "Mississippi Goddamn," the song that marked the emergence of Nina Simone, the Civil Rights activist. Infused with traditional hymns along with songs including "Four Women," "I Loves You, Porgy," and "Young, Gifted and Black," *Nina Simone: Four Women* looks at an artist and the women around her as their journey leads them down a path of discovery and healing.

## DON'T MISS OUT

Experience the remaining 4 shows in Geva's exciting 24/25 Season - subscription packages starting at just \$88. **Subscribe online now!**



JAN 14 - FEB 09

FEB 25 - MAR 23

APR 15 - MAY 11

MAY 28 - JUN 29



### For Tickets & More Info

Visit [GevaTheatre.org](http://GevaTheatre.org), or call or visit the Box Office at 585-232-4382.







# WELCOME

- **5** Welcome  
- Message from Geva's Leadership  
Elizabeth Williamson and James Haskins
- **6** *A Christmas Carol* Creatives
- **10** Dramaturg's Note  
- Welcome to Our Table: *A Christmas Carol* is for Everyone
- **13** Connectivity  
- *Mondays at Geva*
- **14** Biographies
- **23** About Geva Theatre
- **25** Supporters

---

## Thank You to our Sponsors for *A Christmas Carol*

---

### PRESENTING SPONSOR



---

### LEAD PRODUCER



Official Vehicle Sponsor  
of Geva Theatre

---

### MEDIA SPONSORS



---

### HOME FOR THE HOLIDAYS SPONSORS



# 2024-2025 BOARD OF TRUSTEES

## EXECUTIVE COMMITTEE

- Jane C. Hasselkus**, Chair
- Tom Rogers**, Treasurer & Chair, Finance Committee
- Helen A. Zamboni**, Secretary
- Diane F. McCue**, Vice-Chair & Chair, Development Committee
- Christina Gullo**, Chair, Nominating & Governance Committee
- Wyndy Turner**, Co-Chair, IDEA Committee
- Steven P. Metzger**, Co-Chair, IDEA Committee
- Essie Calhoun McDavid**, At Large
- Lisa Martinez DeVinney**, At Large

## TRUSTEES

- Katie Baynes
- Philip L. Burke
- Margaret Busch
- Essie Calhoun McDavid
- Barbara de Leeuw
- Lisa Martinez DeVinney
- Hyacinth Hope Drummond
- Bonnie Garner
- Richard Gray
- Lori B. Green
- Christina Gullo\*
- James Haskins, *ex officio*
- Jane C. Hasselkus
- Tomás C. Hernández
- Deborah L. Hughes
- Abhas Kumar
- Barbara J. LaVerdi
- Dr. Dawn Lipson
- Faheem Masood
- Diane F. McCue
- Steven P. Metzger
- Miriam M. Moore

- Robert Neale
- Rhonda Noto
- Shree Pandya
- Tom Rogers
- Jean Gordon Ryon
- Laura J. Sadowski
- Elaine Spaul
- Elizabeth M. Teall
- Mimi Tilton
- Sam Tilton
- Wyndy Turner
- William F. Weir
- John C. Williams
- Elizabeth Williamson,  
*ex officio*
- Helen A. Zamboni

## HONORARY TRUSTEES

- Dennis Bassett\*
- Helen H. Berkeley\*
- Peggy Boucher
- William A. Buckingham
- Stephanie M. Caffera

- Sergio Esteban\*
- David Fiedler\*
- Ronald H. Fielding
- Betsy T. Friedman\*
- Patrick Fulford\*
- Joanna Grosodonia\*
- A. Thomas Hildebrandt
- Maureen D. Holtzman
- John F. Kraushaar\*
- Carol Love\*
- Peter Messner\*
- Michael B. Millard\*
- Emily Neece\*
- Nannette Nocon
- David Perlman
- John C. Razor\*
- Robert Saltzman
- Paul Seidel
- Maggie Symington\*
- Mary Kay Taber
- Linda Cornell Weinstein\*
- Deborah Wilson

Trustees are volunteers and receive no compensation.

\*Indicates Former Board Chair

## TICKETS

Tickets can be purchased online at [GevaTheatre.org](http://GevaTheatre.org), or by phone at 585-232-4382.  
 Box Office Hours are:  
 Tuesday - Saturday ... Noon - 8:00pm  
 Sunday ... Noon - 7:00pm  
 Monday ... Closed  
 Telephone: (585) 232-Geva (4382)  
 Gift Certificates in any dollar amount may be purchased year round from the Box Office.

## GROUP RATES

Available for groups of 10 or more.  
 Call the Box Office at 232-4382 or email [groups@GevaTheatre.org](mailto:groups@GevaTheatre.org) for more information.

## STUDENT RUSH TICKETS

Available from \$15 for all non-sold out performances, beginning 2 hours prior to curtain time. Students must present valid ID. One ticket per person.





## MESSAGE FROM GEVA'S LEADERSHIP

Welcome, and thank you for joining us for our joyful new production of *A Christmas Carol*, directed by Elizabeth and adapted by our inaugural Playwright in Residence Harrison David Rivers! We would like to thank our presenting Sponsor KeyBank for their continued support and our Lead Producer Vision Auto Group for making the holidays brighter for all. *A Christmas Carol* will transport you to Charles Dickens' Victorian London for this evergreen fable of celebration, reflection, discovery, and redemption. Whether you are continuing your annual holiday tradition or joining us for the first time, we wish to thank you for sharing in the spirit of the season as we bring you this classic story filled with Humor, Heart, Hope, and a little bit of Horror (after all, it is a ghost story!).



**James:** I wish to join with all of you in celebrating my first holiday season in the Rochester community. It has been my absolute pleasure to work with Elizabeth, the staff, and Board of Geva Theatre to bring you transformative stories from many of our greatest playwrights and I look forward to continuing that journey into the New Year. Harrison's adaptation of *A Christmas Carol* is an inspiration. He captures the essence of Dickens' story while offering enlightening and hopeful insights into Scrooge's transformation. I wish for a joyful holiday season for us all here in Rochester and ask that we share the light of the season with others in our various communities.



**Elizabeth:** It has been a great joy bringing this new adaptation to life for the first time with Harrison, our brilliant dramaturg Sally Lobel, and an extraordinary team of collaborators!

We both wish to share the message of *A Christmas Carol* with everyone who is looking for a bit of hope this holiday season. We have expanded our tradition of sharing this story with multiple school groups in our student matinee series, many of whom will be experiencing live performance for the first time. We will also continue our "Home for Holidays" tradition of inviting active service military individuals and their families - Blue Star Families - to a free performance of *A Christmas Carol*, with generous support by RG&E, Get Caked Bakery, and the Rochester community. Join us in making this special performance possible by scanning the QR code in your program and around the theatre, or simply leave a gift in the lobby after the performance.

Lastly, we wish you an abundance of Humor, Heart, and Hope as you celebrate the holidays and prepare for the New Year ahead (feel free to leave the Horror behind as you venture back out into the world!). Happy holidays from all of us here at Geva!

Elizabeth Williams  
Artistic Director

James Haskins  
Executive Director

Scan here to donate:



Thank you for supporting an event that means so much to so many.  
*This year's "Home For The Holidays" will be held on Thursday, December 26th, 2024 at 7pm.*



## PRODUCTION CREDITS

**ELIZABETH WILLIAMSON**  
*Artistic Director*

**Geva**  
THEATRE

**JAMES HASKINS**  
*Executive Director*

Presents

The **KeyBank**  production of

# A CHRISTMAS CAROL

Written by **CHARLES DICKENS**

Adapted by **HARRISON DAVID RIVERS**

In collaboration with **SALLY LOBEL**

Directed by **ELIZABETH WILLIAMSON†**

Choreography by **ASHLEIGH KING‡**

Music Direction by **DON KOT**

*Associate Director*  
**JASMINE B. GUNTER†**

*Scenic Design*  
**SE HYUN OH†**

*Costume Design*  
**ILONA SOMOGYI†**

*Lighting Design*  
**NIC VINCENT†**

*Sound Design & Composition*  
**ANDRÉ PLUESS†**

*Dramaturg*  
**SALLY LOBEL**

*Wig Design*  
**EMMA GUSTAFSON**

*Production Stage Manager*  
**JACK MEISTER-LOPEZ\***

*Assistant Stage Managers*  
**SHANNON TOOT\***  
**JULIA BREGY\***

*Casting*  
**DANIELLE PRETSFELDER**  
**DEMCHICK, CSA**  
**ELIZABETH HAY**

*General Manager*  
**THALIA SCHRAMM**

## ACKNOWLEDGEMENTS

*A Christmas Carol* received its world premiere on November 30, 2024  
in a production by Geva Theatre in Rochester, NY  
Elizabeth Williamson, Artistic Director



Geva is a proud partner of  in the Geva-Brockport Alliance.

A Spanish-language version of this program is available at the Box Office and online at  
GevaTheatre.org. Translator: Marisol Galarza-Ruiz





# PRODUCTION CREDITS

## THE CAST

*(In Order of Appearance)*

Young Tim Cratchit.....	Adriana Ruya Venable/Reid A. Antal
Man/Solicitor 1/Ghost of Christmas Future.....	Sommer Carbuccia*
Ebenezer Scrooge.....	Michael Preston*
Bob Cratchit/Marley.....	Carman Lacivita*
Solicitor 2/Mrs. Cratchit/Mrs. Fezziwig.....	Esther Winter*
Fred/Fezziwig/Ghost of Christmas Present.....	Tom Holcomb*
Fan/Martha/Ghost of Christmas Past.....	Imani Youngblood*
Clarence.....	George Martone/Nailah Rollins
Arthur/Peter.....	Frederick R. Hawkins/Millicent Mahar
Young Ebenezer.....	Aurora Wantuch/Willow Sky Fisher
Apprentice Ebenezer/Ellis.....	Blake Hamilton Currie*
Belle/Lily.....	Sujaya Sunkara*
Belinda.....	Lauren Hochreiter/Rosemary Laprime
Turkey Boy.....	Kit Wanek/Deonne Major
Londoners/Ensemble.....	Evan Burmeister, Colin Cedeño, Rachel Ekstrom, Gabriel Pierce, Julia Schubbe, Kaley Sumeriski
Swings.....	Kai Hoag, Sydney Johnson

## UNDERSTUDIES

For Bob Cratchit/Marley: *Evan Burmeister*; For Apprentice Scrooge/Ellis: *Colin Cedeño*;  
 For Mrs. Fezziwig/Mrs. Cratchit: *Rachel Ekstrom*; For Fred/Present/Fezziwig: *Gabriel Pierce*;  
 For Fan/Past/Martha: *Julia Schubbe*; For Belle/Lily: *Kaley Sumeriski*

## SETTING

London, 1843. Plus locations in Scrooge’s past and future.

---

*There will be one 15-minute intermission.*

---

## ADDITIONAL CREDITS

Rehearsal Stage Manager.....	Colt Luedtke*
Fight Choreographer.....	Erica Murphy
Associate Sound Design.....	Andrew Mark Wilhelm
Youth Supervisor.....	Kate Duprey
Assistant Young Supervisor.....	Ezra Eaves
Dialect Coach.....	Thom Miller
Additional Dramaturgy.....	Jean Gordon Ryon
Open Captioner.....	Samantha Geffen
Sign Interpretation Coordinator.....	Luane Davis Haggerty
Director of Artistic Sign Language.....	Matthew J. Schwartz
Sign Interpreters.....	Danny Huntley and Be’anni Hogan
Audio Description Program Coordinator and Consultant.....	Rene Latorre
Audio Descriptor.....	Christine Corrado



# PRODUCTION CREDITS



\*Members of Actors' Equity Association, the Union of Professional Actors and Stage Managers in the United States.



†Indicates members of the Stage Directors and Choreographers Society, an independent national labor union.



‡The scenic, costume, lighting and sound designers in LORT Theatres are represented by the United Scenic Artists, Local USA-829 of the IATSE.



Geva Theatre operates under agreements between the League of Resident Theatres (LORT), a consortium of regional theatres throughout the nation; Actors Equity Association (AEA), the union of professional actors and stage managers in the United States; the Stage Directors and Choreographers Society (SDC), an independent national labor union; and United Scenic Artists (USA), a union of scenic, costume, lighting and sound designers.



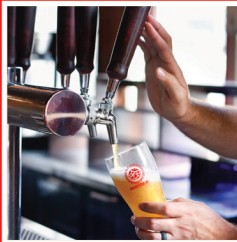
Geva Theatre is a member of Theatre Communications Group (TCG), the national service organization for the American Theatre.



**Please note that the taking of photographs or use of recording devices during the performance is not permitted. Cell phones and all other electronic devices are strictly prohibited in the theatre.**



## Join us at Geva's Bar and café, featuring Nine Spot Brewing!



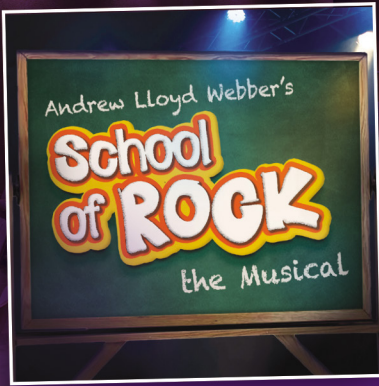
*The bar & café are always open at least 2 hours ahead of performances. Check online for details.*



★ LOUIS S. WOLK  
**JCC**  
ROCHESTER

  
CENTERSTAGE

Tickets at  
[jcccenterstage.org](http://jcccenterstage.org)



December 7-22



February 1-16

JCC Hart Theater | 1200 Edgewood Ave. Rochester, NY 14618

Give the Gift of **Music & Dance**  
this Holiday Season!



**HOCHSTEIN**

Open Enrollment—Register Today!  
[HOCHSTEIN.ORG](http://HOCHSTEIN.ORG) • 585.454.4596



## DRAMATURG'S NOTE

### Welcome to Our Table: *A Christmas Carol* is for Everyone

**"The words of that song ... comfort and joy. To be honest, I could do with a bit of both. Though I suppose we all could this time of year."**



Tim Cratchit's words, "God bless us, every one!" are some of the most famous ever committed to print. A major part of *A Christmas Carol's* happy ending is that when Scrooge undergoes his transformation, Tim gets to live. Tim, and his disability - his "active little crutch," his "plaintive voice" - pull at Scrooge's heartstrings and compel him to reconsider his ways. He serves as a symbol of innocence, cheer, and goodness, a catalyst for change. However, readers, and Scrooge, traditionally know very little about

Tim himself. Despite being an important instrument in Scrooge's transformation, he and Scrooge don't meet until the end of the novella. In many ways, Tim remains unknowable, buried under all those layers of symbolism.

While Tim may be one of literature's most famous disabled characters, he shares almost nothing in common with our current understanding of disability justice. You can find examples of the disability community organizing for their rights dating back to at least the 1800s, but the American disability rights movement as it exists today has its roots in the advocacy of the 1960s and 1970s. In particular, the development of *the social model of disability* is key to understanding the current thinking on disability rights. Essentially, rather than defining disability as merely a medical condition that needs to be "cured," the social model frames disability as an experience, an identity. It argues that the most challenging or "disabling" parts of being disabled stem from barriers created by society. These include physical barriers (inaccessible homes, common spaces, transportation) and systemic barriers (discriminatory policies in large organizations). Perhaps most importantly, though, the disability rights movement aims to address social barriers - the learned perceptions, stereotypes, and assumptions that make it challenging for disabled people to participate fully in their communities.



The disability community is an incredibly vast and varied one. According to the CDC, 1 in 4 Americans are disabled, and it's more likely than not that someone will experience disability at some point in their lifetime. With that said, there is no one right way to sum up the community - every disabled person, every experience of disability, is different. Despite this complexity, we can start to understand the



## DRAMATURG'S NOTE

disability rights movement by thinking about the following: Everyone deserves to live with dignity, everyone is valuable, and everyone deserves to live a joyful life, and to experience the fullness of their humanity.

I'm a dramaturg, bookworm, and a shameless nerd. I'm also a proud member of the disability community. Considering the large gulf between Dickens' portrayal of disability, and the reality of being a disabled person today, it's easy to see why I might be tempted to say "Bah, Humbug!" to *A Christmas Carol*. But when Artistic Director Elizabeth Williamson and Playwright Harrison David Rivers invited me to collaborate on this new adaptation, we all saw the potential for something exciting - an opportunity to reconnect with and reexamine this story.



Harrison brought an incredible generosity to our collaboration. He heard my fears and frustrations, and shared his own. We agreed to try to approach the *Carol* as if we had never heard it before, but we also explored countless other adaptations of the work, and looked closely at Dickens' original text, to find what spoke to us. And we started with that very specific and personal lens - the treatment of Tim. Our adaptation celebrates how important Tim is to the original text, but we've tried to give him as much agency as possible, as well as a bit of magic. We've also dropped the nickname - instead of Tiny Tim, the "symbol," we're excited for you to meet Tim Cratchit, the person - no more, no less.

Much like Scrooge's story moves from the individual to a discovery of community, from "me to we," changing how we approached Tim allowed us to make huge strides in rediscovering the rest of the *Carol*. We've tried to follow, as Harrison calls them, "the most generous impulses of Dickens' story." Just like Tim, every character has value beyond the lessons they teach Scrooge. There's a vibrant community waiting just beyond Scrooge's door, if he would only have the courage to reach out. It's full of people who have their own hopes, joys, and fears. Most importantly, they have much more in common with Scrooge than they realize. While the story may focus on Scrooge's journey, all the characters are grappling, in their own way, with what it means to be a good person. After all, "goodness" is not a fixed point. Times may change, but we are all capable of growth, connection, and generosity.

As the Cratchits welcome a transformed Scrooge at the end of the *Carol*, we - the huge community of artists, writers, and makers bringing this tale to life - are excited to welcome you to our table. We hope you pull up a chair and stay a while. We're so glad that you're here.

- Sally Lobel, Dramaturg



# Announcing Geva Theatre's 2024/2025 Student Matinee series!

**Teachers:** Bring your students to an exceptional, professional school-day performance; we'll make it easy, enriching, and fun. When you make a Student Matinee reservation, you're buying more than a ticket; you're choosing a complete educational journey for your students.



## Every Student Matinee reservation includes:

- A teacher preview ticket
- 1 complimentary chaperone ticket for every 15 student tickets purchased
- A Discovery Guide (available in both English and Spanish) curated by Geva artist-educators, packed with information about the play, relevant context, suggested discussion questions, and related activities
- A post-show talkback with members of the cast

The Passport Program provides free tickets to RCSD groups and charter schools within the city limits of Rochester. Passport tickets are limited and available on a first come, first served basis.

Visit [www.gevatheatre.org/education/](http://www.gevatheatre.org/education/) for complete details!

"I find that teaching hard subjects is made easier by coming to it through the arts first. The Discovery guide was incredible. We used it, almost in its entirety. It provided the perfect background information to discuss and prepare them for what they would see. Geva does a phenomenal job of helping to convey the emotional and intellectual accessibility and stimulation of Geva's productions for young people."



**"My students were mesmerized and blown away! They are still talking about it days later - particularly the use of movement in storytelling."**

"We are a social justice school and having opportunities to bring our students to Geva's shows fits with our mission. Some of our students have been to a live theater production. At the talkback with the cast, the first three hands raised were from my school! This was an invaluable experience."



Geva Theatre's Student Matinees are supported by: William & Sheila Konar Foundation, ESL Charitable Foundation, Daisy Marquis Jones Foundation, Donald F. & Maxine B. Davison Foundation, Rubens Family Foundation, Joseph & Irene Skalny Charitable Trust, Guido & Ellen Palma Foundation, Robert and Susan Touhsaent, Richard & Joan Fenton, Elizabeth Rennert, Cornell/Weinstein Family Foundation, Dr. Tomás C. Hernandez & Dr. Keith S. Reas, and Kathleen and Alfred Laitenberger





Connectivity at Geva Theatre's overarching objective is to connect more people and organizations with the art presented on its stages. To build more connected relationships with existing patrons and partners. To build new and meaningful relationships with people and organizations with whom we have traditionally had no or little connectivity, the sticky kind of connectivity that endures.

**Connectivity at Geva programs are sponsored, in part, by Volvo Cars Rochester.**

---

## Mondays at Geva

The stages are dark on Monday evenings at Geva, so the art and action shift to the lobby and café where brilliant local visual artists, performers, musicians, and speakers broaden our consideration of the onstage productions. Geva Theatre invites the community to join us for a series of art openings and to party for a couple of hours each month!

### **Mondays at Geva Event for *A Christmas Carol*:**

**MONDAY, DEC 2** 6 – 8 p.m.

Mondays at Geva will feature a discussion panel for *A Christmas Carol*, centered around disability representation in the arts. The panel will include Sally Lobel and members of the creative team.



**Sally  
Lobel**  
Dramaturg



**Danielle  
Demchick**  
Casting Director



**Sommer  
Carbuccia**  
Actor/Production  
Cast Member



**Elizabeth  
Williamson**  
Artistic Director

---

### **The Many Adventures of Tim Cratchit: Reimagining Disability in *A Christmas Carol***

"Tiny" Tim Cratchit is one of the most well-known disabled characters in popular culture. Yet, this representation of disability has been firmly stuck in the past. Join us at Geva for a discussion with some of the creative team of *A Christmas Carol* to explore how updating Dickens' classic meant rethinking that treatment of disability and bringing Tim into today's world.

# WHO'S WHO

## CAST

### REID A. ANTAL (*Ivy Cast: Young Tim Cratchit*)



(he/him) is overjoyed to be playing Tim. As an actor with cerebral palsy, he feels he has an authentic understanding of the character. Reid, a student, was last seen in Webster Theater for Youth's *The Addams Family* YoungPart Edition and *Beauty and the Beast Jr.* When not on stage, Reid enjoys chess, baseball, and rooting for the Buffalo Bills. He would like to thank his family for always supporting his dreams.

### EVAN BURMEISTER (*Londoner/Ensemble*)



(he/they) is ecstatic to be performing in his first show at Geva Theatre! He is a student at SUNY Geneseo and is Double Majoring in Musical Theater and English. Some favorite previous credits include Covey Theater Company's *Chicago* (Fred Casely/Ensemble), SUNY Geneseo's *The Lucky Stiff* (French Emcee/Others), and portraying Bert in his high school's production of *Mary Poppins*. He would like to thank his friends and family as well as Don Kot for all of their love and support in helping him get to the Geva Theatre stage for such a magical show!

### SOMMER CARBUCCIA (*Man/Solicitor 1/Ghost of Christmas Future*) (he/him)



is an actor who has had a career working in Television, Film, Voice Over and Theatre. Born in the Dominican Republic and raised in Miami, FL, he is a graduate of NYU's Tisch School of the Arts and has played roles in TV shows such as *NCIS: New Orleans*, *Grey's Anatomy*, and others. He most recently appeared on the CBS show *NCIS*, and is most well known for playing Eric Jackson on The CW's *Riverdale*. His largest passion outside of acting is video games and he is currently playing through The Legend of Zelda: Echoes of Wisdom on his Nintendo Switch.

### COLIN CEDEÑO (*Londoner/Ensemble*) (he/



him) is currently in his 4th year of college at SUNY Brockport studying Theatre Arts and excited to be in his first show here at Geva. He has been featured in productions throughout Rochester such as *A Chorus Line* (Larry), *Curious Incident of the Dog in the Nighttime* (Christopher), *Goosebumps* (Steve), *Hello Dolly*

(Ambrose), and *Newsies* (Race). Colin would love to thank his mother for her constant support, as well as his siblings and friends for cheering him on.

### BLAKE HAMILTON CURRIE (*Apprentice*



*Ebenezer/Ellis*) (he/him) is incredibly excited to be making his Geva Theatre debut and to be joining the cast of *A Christmas Carol*! His theatre credits include *Rosencrantz and Guildenstern are Dead* (Court Theatre); *Twelfth Night* (Chicago Shakespeare Theater); *A Midsummer Night's Dream* (Shakespeare & Company); *Macbeth* (Tennessee Shakespeare Company); *Romeo and Juliet* (Tennessee Shakespeare Company); *As You Like It* (Tennessee Shakespeare Company); and *Buried Deep* (Endstation Theatre). He would like to give endless thanks to his family and his loving partner.

### RACHEL EKSTROM (*Londoner/Ensemble*) (she/



her) is thrilled to be making her professional debut at Geva Theatre. She is set to graduate from SUNY Brockport this year with degrees in Theatre, Broadcasting, and Journalism, along with a minor in Musical Theatre. You may recognize her from her performances in *Our Country's Good*, *Speech and Debate*, *Elemeano Pea*, *The Games Afoot*, *Too Much Light Makes the Baby Go Blind*, and *Proof*. She was also nominated for an M.T.I. award for her performance in *Songs For A New World*. Rachel is excited to bring her passion for storytelling to the stage and looks forward to the journey ahead.

### WILLOW SKY FISHER (*Ivy Cast: Young Ebenezer*)



(she/her) has been coming to see *A Christmas Carol* since she was 4 years old, and is so excited to be performing this year! She has always loved being on stage, and her favorite roles so far have been Peach in *Finding Nemo Jr.*, and Les in *Newsies*. She would like to thank her singing teacher Lisa, her Roc City Players directors Mr. Williamson and Ms. Johnson, and her mother for supporting her.

### FREDERICK R. HAWKINS (*Holly Cast: Arthur/*



*Peter*) (he/him) is an 11 year old student and is a Drama major. Frederick realized his passion for acting while watching his favorite musical *Hamilton*. Frederick joined Roc City Players in 2023 where he has now done 4 musicals.



## WHO'S WHO

Frederick attends church weekly where he loves to share his love and gift of singing with his church family. Frederick is thrilled to be cast in this year's *A Christmas Carol*.

**KAI HOAG (Swing)** (he/they) is overjoyed to make



their Geva Debut! He is currently a student at SUNY Brockport where he was most recently seen in *Songs for a New World*. He wants to thank their mom for her constant encouragement and the rest of his family and friends for their unending support and love!

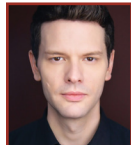
**LAUREN HOCHREITER (Holly Cast: Belinda)**



is thrilled to make her Geva debut in this holiday tradition! She is a sixth grader. When not performing, she loves reading, art, Taylor Swift, and cuddling her two Goldendoodles. Lauren has appeared in several productions

at OFC Creations Theater - her favorites are *Mean Girls*, *Moana*, *Annie*, and *Matilda*. Lauren would like to thank her family and friends for their love and support on and off the stage.

**TOM HOLCOMB (Fred/Fezziwig/Ghost of Christmas Present)** (he/him)



Off-Broadway: *The Welkin* u/s (Atlantic Theater), *Aristocrats*, *Meet Me In St. Louis*, *London Assurance*, *It's A Wonderful Life*, *Ernest In Love* (Irish Repertory Theatre), *The Broken Heart*,

*Macbeth* (TFANA), *Murder In The First* (The Directors Company), *Eighty Three Down* (Under St Marks). Regional: *we are continuous* (Williamstown Theatre Fest, Geva Theatre), *This Bitter Earth* (TheaterWorks Hartford), *Stupid F-ing Bird* (Woolly Mammoth prod at Syracuse Stage/Portland Center Stage), *The Great Gatsby* (Virginia Stage), *A Midsummer Night's Dream* (Geva Theatre), *Dial 'M' For Murder* (Dorset Theatre Festival), *A Midsummer Night's Dream* (Guthrie Theater), *Dying City* (Bottling Company). Television/Web: CoExisting, BOKtv, Onion News Network. Training: U of M/Guthrie BFA Actor Training Program.

**SYDNEY JOHNSON (Swing)** (she/her) is thrilled



to be making her first professional debut at Geva Theatre. She began her dance journey at a young age and credits Jo-Me Dance Company in Boston, Massachusetts, for building her foundation in dance and nurturing

her commitment to the art form. Her passion for

theater has flourished in recent years. Currently a senior at SUNY Brockport, Sydney has been enhancing her skills in both dance and theater. She is also the Founder and Choreographer of Sydney's Summer Dance Camp. In 2023, she made her theatrical debut in *Sweat*, earning an Irene Ryan Scholarship nomination, followed by performances in *Too Much Light Makes the Baby Go Blind* and *The Curious Incident of the Dog in the Night-Time*, for which she received an Irene Ryan nomination. Most recently, she was part of the cast in the *Festival of Ten*. Sydney will graduate with a Bachelor of Arts in Dance and Journalism & Broadcasting in Spring 2025 and looks forward to contributing to this Christmas classic! She thanks her mom for her constant support. @sydjohnson12

**CARMAN LACIVITA (Bob Cratchit/Marley)**



(he/him) BROADWAY: *Marvin's Room*, *Cyrano de Bergerac* w/ Kevin Kline. OFF BROADWAY: *To My Girls* (Second Stage), *Sense and Sensibility* (Bedlam), *Rose Rage* (Chicago Shakespeare), *Red Bull*, *The Public*, *The Atlantic*

and others. REGIONAL: *Kate Hamill's Emma*, World Premiere (The Guthrie, Denver Center). Works with Rep. Theater of St Louis, Two River, Syracuse Stage, Dorset, *George is Dead* dir. Elaine May (George St. Playhouse/Arizona Theater), Chicago Shakespeare, Long Wharf, and others. TV/FILM: *Law & Order* (NBC), *Blue Bloods* (CBS), *Golden Boy* (CBS), *Royal Pains* (USA), *The Chica Show* (NBC) and others. MFA-Rutgers University, BFA-Texas Christian University. Founding member and Artistic Associate of Amphibian Stage Productions. Carman is an Acting coach & Fight Choreographer. @Carmanlacivita

**ROSEMARY LAPRIME (Ivy Cast: Belinda)** (she/



her) is thrilled to be making her Geva Theatre debut! She studies acting, voice, and dance at OFC's Creations theater and has performed in many productions there, her favorites being *Matilda JR.* (Matilda), *Wizard of Oz JR.*

(Dorothy), *Willy Wonka* (Violet) and many others. She can be seen this winter in *Gypsy* (u/s Baby June/Baby Louise, child ensemble) at OFC's Broadway in Brighton Series. Thank you to all my teachers, friends, and family for the support!



# WHO'S WHO

## MILLICENT MAHAR (*Ivy Cast: Arthur/Peter*)



(she/they) is thrilled to be making her Geva debut! Spotlight Performing Arts: *Matilda Jr.*, *Frozen Jr.*, *Footloose Jr.*, and *Mary Poppins Jr.* She participates in her school's chorus, the Jr. High Area All State Treble Chorus, and

loves to create in all manners in her spare time. She also loves serving in community soup kitchens and food pantries. Millie would like to thank her parents, sister, and voice teacher for helping along the way.

## DEONNE MAJOR (*Ivy Cast: Turkey Boy*) (he/him)



is an energetic fun loving 8 year old. In his free time, he loves to sing and dance. Deonne would also love to direct different plays with his family and friends. His dream is to perform on Broadway.

## GEORGE MARTONE (*Holly Cast: Clarence*)



(he/him) has a passion for performing on stage and for entertaining audiences. Since stepping into his first role as Horton in *Seussical* in 5th grade, he has captivated audiences with his singing, dancing, and

vibrant performances. Known for his talent and professionalism, he has appeared in popular productions such as *Newsies*, *Grease*, and *Music Man*, often performing alongside older cast members and impressing with his maturity and stage presence. Now, he's thrilled to join his first professional production in *A Christmas Carol*, eager to bring his love for storytelling to a larger audience. With his dedication and enthusiasm, George is excited to continue growing as an actor and performer, bringing heart and energy to every role he takes on.

## GABRIEL PIERCE (*Londoner/Ensemble*) (he/him)



is elated to be an intern for his first Geva production, *A Christmas Carol!* Gabriel is a senior (4th year) undergraduate at the University of Rochester studying Biomedical Engineering and English: Theater. He often acts in productions at

the University of Rochester's International Theater Program, where some credits include *Our Town* (Stage Manager), *The Crucible* (Reverend Parris), and *Metamorphoses* (Ceyx/Orpheus/Philemon). Outside of UR, Gabriel has acted at the JCC CenterStage Theater and Blackfriars Theater, in

*Austen's Pride* (Fitzwilliam Darcy) and *Rent* (Benny), respectively. Gabriel hopes to see himself in medical school in the coming years. He would like to thank his mother and father for their constant support and love through his endeavors.

## MICHAEL PRESTON (*Ebenezer Scrooge*) (he/him)



It is lovely to be back at Geva again working on this wonderful new adaptation. Regional: Hartford Stage (*A Christmas Carol*, *It's a Wonderful Life*, *Fräulein Maria*, *A Midsummer Night's Dream*), Arena Stage,

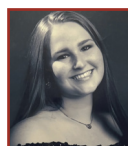
Circus Flora, La Jolla Playhouse, San Diego Rep, Seattle Rep., and ACT. Longtime member of the Shaliko Company, based at La Mama. He toured the world as one of the Flying Karamazov Brothers, which included three different runs on Broadway and appearances on *Ellen*, *The Tonight Show* and *Seinfeld*. With them he collaborated on and performed 9 different shows, including an update of *Room Service* (winner of an L.A. critic's award in 1994). He directed their show, *Life: A Guide for the Perplexed*. With Barbara Karger, he co-directed *Peter and the Wolf* (Amsterdam) and *Fräulien Maria* (conceived and choreographed by Doug Elkins), which finished touring the country after four award-winning years in 2015. He was the Chair of the Department of Theater and Dance at Trinity College in Hartford, CT, and directed numerous shows there and at the Hartt School.

## NAILAH ROLLINS (*Ivy Cast: Clarence*) (she/her)



is really excited to dive into this new role after two amazing years in *A Christmas Carol* at Geva Theatre. A proud Rochester native and she's participated in many productions with OFC Creations Theater, where she's loved every moment on stage. She can't wait to bring this new character to life and connect with audiences once again in this fantastic production!

## JULIA SCHUBBE (*Londoner/Ensemble*) (she/her)



is delighted to be making her professional debut with Geva Theatre this holiday season! Julia is a senior at SUNY Brockport and will receive her BA in Theatre this spring. Her previous credits include *The 25th*

*Annual Putnam County Spelling Bee* (Schwartz), *The Game's Afoot* (Madge), *Too Much Light Makes the Baby Go Blind*, *The Curious Incident of the Dog in the Night-Time* (Assistant Stage Manager) and *Songs For a New World*. She has been nominated for the KCACTF Irene Ryan





## WHO'S WHO

Acting Scholarship for her performances in *The 25th Annual Putnam County Spelling Bee* and *Songs For a New World*. Julia would like to give special thanks to family, friends and professors for their love and support of her passions and everyone at Geva for this amazing opportunity! Dedicated to P. Gibson Ralph. @juliaeschubbe

**KALEY SUMERISKI (Londoner/Ensemble)** (she/her) is absolutely thrilled to be a part of Geva Theatre's production of *A Christmas Carol*! This is her first show with the company. She is currently a junior musical theatre major at SUNY Geneseo. Some of her most recent credits include *Tuck Everlasting* (Ensemble/Dance Captain), *Lucky Stiff* (Miss Thorsby/Others), and *Hello Dolly!* (Ermengarde). Kaley would like to thank everyone who has been involved with this production and has put hard work into this beautiful show!



**SUJAYA SUNKARA (Belle/Lily)** (she/they) is so excited to be making her Geva debut! She is a very proud graduate of Elon Music Theatre c/o 2023 and was most recently seen in *Cowboys and East Indians* at the Denver Center. Eternally grateful to friends and family, but especially Mom and Dad. Much love to the best agents in the world at DGRW! esujayasunkara



**ADRIANA RUYA VENABLE (Holly Cast: Young Tim Cratchit)** (she/her) Adriana always had a passion for art from a young age and began gymnastics classes at the age of two. She plays the violin in her school orchestra. Her first role was in the school musical *Beauty and the Beast*. She mastered multiple software programs to create 3D designs. She is currently taking voice acting classes in a studio setting and Turkish classes. Adriana is looking forward to her first professional acting role in *A Christmas Carol*.



**KIT WANEK (Holly Cast: Turkey Boy)** is an 8th grader and has performed in several musicals. This is her first time performing for Geva. Kit enjoys playing trumpet and piano. She also plays soccer, basketball, and track. This year Kit was selected for All State Choir. She would like to thank her school musical directors Mrs. Bemis and Mrs. Bishop. Kit would also like to thank her parents and her older siblings for supporting her throughout her acting career.



**AURORA WANTUCH (Holly Cast: Young**



**Ebenezer)** (she/her) is excited to play the role of Young Ebenezer. She is 9 years old and lives in Canandaigua. Since age 5, she has performed with OFC Creations, Cobblestone Arts Center, and Space Between

Theatre. Recent roles include Annie, Cinderella, Ariel, Young Simba, Anna in *Frozen*, and upcoming Young Cosette in *Les Miserables*. Outside of theater, she also enjoys singing in Youth Chorus of the Finger Lakes, dance, violin, piano, and softball.

**ESTHER WINTER (Solicitor 2/Mrs. Cratchit/Mrs.**



**Fezziwig)** (she/her) is thrilled to return to Geva to be a part of this new adaptation of this beloved classic. Geva credits: *A Christmas Carol* (2023), *La Cage Aux Folles*. West End: *Show Boat*. Regional: *Dreamgirls* (North Carolina Theatre); *Ain't Misbehavin'* (Maine State Music Theatre); *The Wizard of Oz*, *The Music Man*, *Pirates of Penzance* (Sacramento Music Circus). Local: *Caroline, or Change*, *My Mother's Lesbian Jewish Wiccan Wedding*, *Parade*, *Church and State*, *Division Street* (CenterStage, JCC); *Nunsense*, Avenue Q (Blackfriars Theatre). *Ragtime* (Director, CenterStage, JCC); *Neat* (Director, Bristol Valley Theatre); *Titanic, The Musical* (Co-director, CenterStage, JCC). Creative producer, Geva's Recognition Radio. Love to John and family.

**IMANI YOUNGBLOOD (Fan/Martha/Ghost of Christmas Past)** (she/they)



has traveled across the States and Asia to pursue her passion as a performer and creator. She attended St. John's University for Dramatic Arts, Film & TV then graduated from the American

Academy of Dramatic Arts and joined their 2017/2018 Company. Academy credits include *To Wong Foo* (Miss Rachel Tensions); *Stupid F-ing Bird* (Nina); *Hamlet* (Horatio); and *Kentucky* (Hiro). Other stage credits include *Beautiful* (Uptown Soloist, Gateway Playhouse); *Hood* (Gamble Gold, Asolo Rep); *Holiday Inn* (Linda, Mill Mountain); *Twelfth Night* (Feste, The Flea); *Romeo & Juliet* (Juliet, Lady Shakes Theatre Co); *Little Shop of Horrors* (Chiffon, EPIC Players); *Shakespeare in Love* (Viola, Opera House Arts); and *Lysistrata Jones* (Myrrhine, Ophelia Theatre Group). <3 Salamat po

## CREATIVE & ARTISTIC TEAM

**HARRISON DAVID RIVERS (*Playwright*)** (he/him) is an award-winning playwright, librettist and television writer based in St. Paul, Minnesota. His works include *we are continuous* (Diversionsary, Uptown Players, New Conservatory Theatre Center, Geva, Williamstown), *The Salvagers* (Yale Rep), *the bandaged place* (Roundabout), *This Bitter Earth* (TheaterWorks Hartford, InterAct, About Face, Penumbra, NCTC), *Last Of The Red Hot Mamas* with Sue and Lloyd Ecker (Bucks County Playhouse), and *We Shall Someday* with Ted Shen (Alabama Shakespeare Festival, Theater Latté Da). His television credits include Peacock's *One of Us is Lying*, HBO's *The Nevers* and Amazon's *Witches*. Harrison sits on the Board of Directors of The Movement Theatre Company and Playwrights' Center. [harrisondavidrivers.com](http://harrisondavidrivers.com)

**SALLY LOBEL (*Dramaturg*)** (she/her) is a dramaturg, theatremaker, and advocate for disability justice and representation, both onstage and off. Favorite projects include *A Community Carol*, *Jane Eyre*, *Cry it Out* (Hartford Stage), and *Mr. Burns, a post-electric play* (The Wilma Theater). Her writing has appeared in HowlRound Theatre Commons. Sally received a BA in Comparative Cultural Studies from Northern Arizona University. When she's not nerding out in a rehearsal room, you can find her in a library or at a DND table. Many thanks to Harrison, Elizabeth, and Fiona for their generosity and trust. Eternal love to Mom, Iris, Hugo, and The Hearthbreakers.

**ELIZABETH WILLIAMSON (*Director/Artistic Director*)** (she/her) joined



Geva as Artistic Director in 2022, to launch the theatre's 50<sup>th</sup> Anniversary Season. An Obie Award-winning director, Williamson is known internationally for her work as a dramaturg, director, adapter, and producer. Broadway: *Matthew López The Inheritance* (Tony, Olivier, Critics Circle, Evening Standard, GLAAD, and Drama Desk Awards for Best Play, Outer Critics Circle Honoree), *A Gentleman's Guide to Love and Murder* (Tony Award for Best Musical), *Anastasia*. West End: *The Inheritance*. Off-Broadway: Sarah Gancher's *Russian Troll Farm*, Dan O'Brien's *The Body of an American*. Regional: About Face Theatre, ACT, the Alley, Cal Shakes, Court, Hartford Stage, the La Jolla Playhouse, Oregon Shakespeare Festival, Pioneer Theatre, Steppenwolf, Theatre de La Jeune

Lune, TheaterWorks Hartford, TheatreSquared, the Westport Country Playhouse, Williamstown Theatre Festival. Williamson previously served as Associate Artistic Director and Literary Manager at Pioneer Theatre Company in Salt Lake City and as Associate Artistic Director and Director of New Play Development at Hartford Stage. She received a 2007 NEA Fellowship in Literary Translation and is a member of SDC and LMDA. Education: M.St., Oxford University; B.A., Bennington College; trained at the École Internationale de Théâtre Jacques Lecoq.

**ASHLEIGH KING (*Choreographer*)** (she/her) A DC born and based artist, Ashleigh is elated to be creating at Geva for the first time. Ashleigh is passionate about justice, comedy, and being a generally decent parent. She also has received a number of Helen Hayes Award nominations\* and wins\*\* for both direction and choreography. Some favorite credits include: *Hair*, *Ragtime\**, *Which Way to the Stage\** (Signature Theatre); *Bov Water*, *Spring Awakening*, *Spamalot* (Northern Stage); *Little Shop of Horrors* (Ford's Theater); *Problems Between Sisters*, *Fun Home* (Studio Theater); *The Mortification of Fovea Munson* (The Kennedy Center); *Sea Minkettes*, *Teenage Dick*, *Fairview* (Woolly Mammoth); *Beautiful* (Olney Theatre Center); *Seussical\*\**, *Legally Blonde\*\** (Keegan Theater); *A Year with Frog and Toad\** (Imagination Stage).

**DON KOT (*Music Director*)** (he/him) celebrates his 24th season at Geva Theatre, and this new version of *A Christmas Carol* is the 50th musical he has directed at Geva! He has been vocal coach/music arranger for 10 plays, and a part of 10 new-musical workshops/presentations as part of the Festival of New Plays. Mr. Kot has performed Off-Broadway at Playwrights Horizons, Alice Griffin Jewel Box Theatre at Pershing Square Signature Center, 45 Bleecker Street Theatre, Laurie Beechman Theatre, and at the Toronto Fringe Festival, among others. National touring productions include *Fosse*, *Footloose*, *Fiddler on the Roof*, *The King and I*, *Mamma Mia*, and *Hairspray*. Mr. Kot is the Coordinator of the Musical Theatre degree programs at the State University of New York at Geneseo.

**JASMINE B. GUNTER (*Associate Director*)** (she/her) is Geva Theatre's Resident Director/Associate Producer. Previously, she worked as the casting director at Remy Bumppo and casting associate at Writers Theatre in Chicago, IL. While based in Chicago, Jasmine studied at Northwestern University as an MFA Directing candidate. She is the 2021 recipient of the Hangar Directing Drama League fellowship,



## WHO'S WHO

the 2020 recipient of the Leighton M. Ballew Directing Scholarship, and an SDC member. Recent directing credits include *The Love Object* (Story Theatre), *The Revolutionists* (Northwestern University), *jump* (Northwestern University), *Last Girl* (Hangar Theatre), *The Wonderful Wizard of Oz* (Hangar Theatre), *Hedda Gabler* (Northwestern University), *Wine in the Wilderness* (Wirtz Center for the Performing Arts), *Intimate Apparel* (SUNY Brockport), *Ghost Story* (Kane Repertory Theatre), *Lines in the Dust* (Geva Theatre), *Reroute* (24 Hour Plays: Nationals). Assistant directing: *Nina Simone: Four Women* (Arena Stage), *In the Heights* (Seattle Rep), *Quixote Nuevo* (Hartford Stage/Huntington Theatre Company), and *The Luckiest People* (Actors Theatre of Charlotte/NNPN). Jasmine has also taught at the Berkshire Theatre Group and the Redhouse Arts Center in Syracuse, NY.

**SE HYUN OH (Scenic Design)** (he/him) Born in Seoul, South Korea he grew up studying various forms of arts - dance, music and fine arts. He took up model making when he was nine and began developing his interest in objects and structures since then. He came to California in 2003 and began studying theatre in college. In his education he worked as an artist for plays, film and operas in Los Angeles, New York, Rome and Seoul. He graduated from California State University Long Beach with a BA in Technical Theatre & Design and from Northwestern University with an MFA in Theatre Design. He has extensive experience in model building with various mediums - plaster, metal, paper, plastic, resin. He is proficient in 2D drafting in AutoCAD, Rendering in Photoshop and Corel Paint. He has an intermediate level of capability in 3D drafting.

**ILONA SOMOGYI (Costume Design)** (she/her) previously at Geva, *Newtown*, *Jane Eyre*. Recent credits include: *Idaspe*, a Baroque opera premiere at Quantum Theater in Pittsburgh; London West End: *Nice Fish* (Previously at St. Ann's Warehouse and ART). Broadway: *Clybourne Park*. Off-Broadway: *Gloria* (Vineyard, Goodman Theatre), *The Body of an American*, *Satchmo at the Waldorf*, *Dinner With Friends*, *My Name is Asher Lev*, *A Soldier's Tale* (Zankel Hall), *Jerry Springer: The Opera* (Carnegie Hall), and the original production of *Wit*. Many regional credits at Arena Stage, Glimmerglass Opera, Ahmanson/CTG, Goodspeed Opera House, Hartford Stage, Guthrie Theater, Chicago Shakespeare, Oregon Shakespeare Fest., Huntington Th., Long Wharf and Yale Rep. She's an MFA graduate of and Professor at The David Geffen School of Drama at Yale. She is also the Founder and Executive Director of Ball & Socket Arts in her hometown of Cheshire, CT.

**NIC VINCENT (Lighting Design)** (he/him) is a lighting designer based out of New York and Toronto. He is grateful to be making his Geva debut with this production. Recent credits include Off-Broadway: *Next* (Lincoln Center Theater); *the bandaged place* (Roundabout); *Heartstrings* (Atlantic); *Renaissance Mixtape* (The Apollo); *Fish* (Theater Row); *Jane Anger* (New Ohio); *Fragments, Lists, & Lacunae* (NY Live Arts); *Greatest Hits Down Route 66* (59E59), *Where Are You?* (Mabou Mines); *Drapadi*, *All the Lonely Women*, DirectorJam (Rattlestick); Regional: *Skeleton Crew* (The Guthrie Theater), *Nina Simone: Four Women* (Indiana Rep); *The Salvagers*, *El Huracán* (Yale Repertory Theatre); *BONEZ*, *Thurgood* (People's Light); *Wolf Play*, *Everybody*, *Constellations* (Brown / Trinity Rep); *The Barber of Seville* (Sacramento Opera); Other: *NIGHTGOWNS* (Sasha Velour / Quibi); Member: ADC IATSE 659, M.F.A.: Yale School of Drama, nicvincent.com

**ANDRÉ PLUESS (Sound Design & Composition)** Projects include the Broadway productions of *The Minutes*, *33 Variations*, *I Am My Own Wife* and *Metamorphoses*, as well as the Lincoln Center production of *The Clean House*. His designs/compositions have been featured at regional theaters throughout the country including the Oregon Shakespeare Festival, McCarter Theatre, Center Theatre Group, Seattle Repertory, Yale Repertory Theatre, Arena Stage, Steppenwolf Theatre, the Goodman Theatre, Chicago Shakespeare Theatre, Berkeley Repertory Theatre, Williamstown Theatre Festival, La Jolla Playhouse, The Huntington, South Coast Repertory and Playwrights Horizons. He has received numerous awards for composition and sound design including multiple Joseph Jefferson Awards, an Ovation Award, a Barrymore Award, a Lortel Nomination and Drama Critics Circle Award. Based in Chicago, André is an ensemble member of Lookingglass Theatre Company.

**EMMA GUSTAFSON (Wig Design)** (she/her) is a freelance designer and wig builder, hair stylist, and makeup artist based out of Minneapolis, MN. She's enjoyed working with many incredible companies in her home state including Theatre Latté Da, Minnesota Opera, Children's Theatre Company, Guthrie Theater, Ten Thousand Things, and many more. She has also been lucky enough to work with many notable companies across the country including Santa Fe Opera, Wolf Trap Opera, Boston Lyric, The Kennedy Center, Utah Shakes, and made her design debut at Geva Theatre last season with *The Color Purple*. Emma's education includes earning her cosmetology license at Aveda Institute Minneapolis in 2015, training as an wigs apprentice at Santa Fe Opera



## WHO'S WHO

in 2018 and 2019, and she received her BA in Theatrical Design from Augsburg University in 2020.

**ANDREW MARK WILHELM (Associate Sound Design)** (he/him) is the current Sound Department Supervisor for Geva Theatre, as well as a Sound Designer. He most recently was the Sound Designer for *Cinderella* and *Dial M for Murder*. Previous Geva credits include Sound Designer for *Somewhere, How To Catch Creation, Airness, Ring of Fire, Once the Musical, and Revival: The Resurrection of Son House* and Video Engineer for *The Real James Bond ... Was Dominican*. He spent most of pandemic working on digital audio and video content for Geva, including the Recognition Radio festival, *Christmas Carol* on WARM 101.3, and *Where Did We Sit on the Bus?* Before Geva, he was a Sound Engineer and Resident Designer for PCPA in Santa Maria, California. Hailing originally from the Detroit area, with a BFA in Theatre Technology & Design from Oakland University, Andrew is fortunate to have worked in theatres from Florida to California, before settling here in Rochester at Geva.

**DANIELLE PRETSFELDER DEMCHICK, CSA (Casting Director)** (she/her) is an advocate manifesting change in how the real world is reflected in today's media. An active member of the New York casting community since 2004, she serves as the co-VP of Advocacy for the Casting Society. Her work focuses on elevating underrepresented and misrepresented communities, on both sides of the camera. With disability being the most underrepresented and misrepresented facet of our population, her passion for disability inclusion in all roles within media is always front and center in her work. In addition to casting full time, she is currently pursuing her master's degree in Disability Studies at the City University of New York (CUNY). Some favorite credits: *Through the Sunken Lands* (The Kennedy Center) and *Tiny Time Travel* (PBS).

**JACK MEISTER-LOPEZ (Production Stage Manager)** (he/they) Off-Broadway: *Blackbirding* (WP), *Elyria* (The Atlantic), *Wedding Band* (TFANA), *The Chinese Lady, Socrates* (The Public), *The Blueprint Specials* (Waterwell). Selected Credits: *The Divining* (The Apollo), *Falstaff* (Santa Fe Opera), *Mother of Us All* (MetLive Arts/Juilliard), *Hyena* (Edinburgh Fringe, La Mama). Film/TV: *Dr. Death, Law & Order: Organized Crime, Blood Magick*. In his spare time he writes and directs his own short films and enjoys discovering the hidden histories of our ancestors. [jackmeisterlopez.com](http://jackmeisterlopez.com)

**SHANNON TOOT (Assistant Stage Manager)** (she/her) Stage Management credits at Geva include *A Christmas Carol, Airness, Lady Day at Emerson's Bar and Grill, Newtown, Sanctuary City* (with Kitchen Theatre Company), *Yoga Play, and Young Frankenstein*. Other SM credits include *Ragtime: The Musical* (Hangar Theatre); *Spring Awakening* and *The Seagull* (The Company Theatre). Stage crew credits at Geva include *And So We Walked, Cinderella, How to Catch Creation, Russian Troll Farm, Sister Act, Somewhere, Vietgone, and The Wizard of Oz*. Shannon studied Theatre at SUNY Brockport and had her first internship with Geva in 2014. Favorite acting credits include *A Christmas Carol* (Ensemble) at Geva Theatre; *Avenue Q* (Kate Monster), *Urinetown* (Hope Cladwell), and *Almost, Maine* (Sandrine, Marvalyn, Marci, Rhonda) at SUNY Brockport. Proud member of AEA. Thank you to my family for your endless support!

**JULIA BREGY (Assistant Stage Manager)** (she/her) is thrilled to return back for her third season here at Geva. She would like to thank her family and friends for all of their support. New York: *DiscOasis NYC* (Constellation Immersive), *Proud Ladies* (James Williams Productions). Regional: *Young Frankenstein* (Berkshire Theatre Group/Bay Street Theater/Geva Theatre), *Frida...A Self Portrait* (Geva Theatre), *Dial M for Murder* (Geva Theatre), *Russian Troll Farm* (Geva Theatre), *Measure for Measure* (Fiasco Theatre/Actors Theatre of Louisville), *Fun Home* (Speakeasy Boston), *Little Women* (Perseverance Theatre). International: *Little Mermaid* (Metta Theatre London/Underbelly Fringe Festival). *I Do Need Me & I'm Not a Bit Like a Clown* (Metta Theatre London). For her parents.

## STAFF LEADERSHIP

**JAMES HASKINS (Executive Director)** (he/



him) is honored to serve as Geva Theatre's Executive Director alongside Artistic Director Elizabeth Williamson, and Geva's Board and staff. Prior to coming to Geva, James served as Managing Director of the Guthrie Theater in Minneapolis after having completed a twelve-year tenure as Managing Director of The Wilma Theater in Philadelphia in partnership with Artistic Director Blanka Zizka. James began his work in theater administration at Circle Repertory Company and went on to





## WHO'S WHO

work with a variety of theaters in New York and Seattle, most notably the Seattle Group Theatre. Upon moving to Philadelphia, he first worked as Managing Director of InterAct Theatre Company, while also serving on the Board of the Theatre Alliance of Greater Philadelphia as Chair of the Barrymore Awards Oversight Committee. He subsequently moved into the Executive Director position of the Theatre Alliance before joining the Wilma. As a theater artist, James acted in many productions before turning to theater administration and is most proud of his directorial and dramaturgical work on the

plays of his husband Michael Whistler. James holds an MFA from the University of Washington and a BA from The College of Wooster in Ohio, where he previously served on the alumni board. Following the pandemic shutdown, James joined committees of the Minnesota Arts and Culture Coalition and the Professional Non-profit Theatre Coalition to help build support and funding for arts and culture. In Philadelphia, he served on the Cultural Advisory Committee under former Mayor Michael Nutter, who officiated his wedding ceremony.

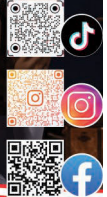
### ACTING



### DESIGN/TECH



### GEVA THEATRE PROFESSIONAL INTERNSHIPS



### THEATRE BROCKPORT

INTENSIVE THEATRE EXPERIENCE  
IN A LIBERAL ARTS ENVIRONMENT



Department of  
**Theatre & Music Studies**  
**SUNY BROCKPORT**



**THEATRE BROCKPORT**  
CONTACT: (585) 395-2478 | [theatre@brockport.edu](mailto:theatre@brockport.edu)

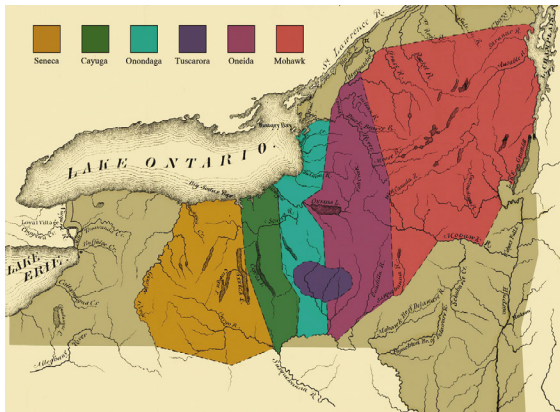
# ACKNOWLEDGING THE LAND



A land acknowledgement creates a more accurate picture of the history of the lands and waterways we call home and pays respect to the Indigenous People who have stewarded them from time immemorial. At Geva, we offer this statement as part of our anti-racist values and to help us all unlearn and relearn the history that has brought us here to the land we call the United States. With this understanding, we can envision a new path forward, led by the principles of equity and justice.

American society as it exists today owes its identity and vitality to generations from around the world who contributed their hopes, dreams and resources to making the history that led to this moment. Some were stolen and enslaved here against their will, some were drawn to leave their distant homes in search of a better life, and some have stewarded this land for more generations than can be counted. Acknowledging the hardships and atrocities that many peoples have suffered on American soil is critical to building mutual respect and connection across all barriers of heritage and difference. By honoring this truth, we begin this effort to acknowledge what has been purposefully buried.

There are 567 federally recognized Indian Nations (variously called tribes, nations, bands, pueblos, communities and Native villages) in the United States. Additionally, there are tribes located throughout the United States who are recognized by their respective state governments.



Graphic by Eric E. Doxtator

## **Geva's Acknowledgment**

We are gathered in the ancestral and unceded territory of the Onöndowa'ga, or "the people of the Great Hill." In English, they are known as Seneca people, "the keeper of the western door." Together, with the Mohawk, Cayuga, Onondaga, Oneida, and Tuscarora, the Seneca make up the sovereign Haudenosaunee Confederacy. We pay respects to their elders, past and present. Please take a moment to consider the many legacies of violence, displacement, genocide and migration that bring us together here today. And please join us in uncovering such truths at any and all public events.

To learn more about the Native people in our region and the Canandaigua Treaty of 1794, visit [ganondagan.org](http://ganondagan.org).



## ABOUT GEVA THEATRE

Geva Theatre is a not-for-profit theatre company dedicated to creating and producing singular theatre productions and programs that serve the Rochester region and beyond, by illuminating the fullness of our many human experiences.

Founded in 1972 by William Selden and Cynthia Mason Selden, Geva was originally housed in the Rochester Business Institute building on South Clinton Avenue. In 1982, Geva purchased and converted its current space - formerly a NYS Arsenal designed by noted Rochester architect Andrew J Warner and built in 1868 - and opened its new home at the Richard Pine Theatre in March 1985. Geva operates two venues - the 516-seat Elaine P. Wilson Stage and the 180-seat Ron & Donna Fielding Stage.

As one of the country's leading theatre companies and a member of the national League of Resident Theatres, Geva produces a varied contemporary repertoire from musicals to world premieres celebrating the rich tapestry of our diverse community. We draw upon the talents of some of the country's top actors, directors, designers, and writers who are shaping the American Theatre scene.

Geva's Education Department serves thousands of students annually through student matinees, in-school workshops, the acclaimed Summer Academy training program, and other programs. Geva's New Play Development Programming offers new and established writers a nurturing environment from which to take their work to the next level. Geva has presented approximately 400 play readings and workshops since its inception. Nearly 70 Geva-developed plays have had subsequent productions around the country. Geva's Engagement Department produces multifaceted programs such as *Geva Insights* that deepen the appreciation of the work on our stages, provide opportunities for regional dialogues, and help fulfill Geva's anti-racism commitments through collaborative programming.

An active member of the Rochester community, Geva offers a multitude of opportunities for our audience and community members to engage with live theatre and the country's best artists. Since the breadth of Geva's programming cannot be sustained on ticket sales alone, this contribution to the region's cultural, social and economic vitality is recognized by grants and charitable contributions from federal, state and local government agencies, national and local foundations, and businesses and individuals from throughout the region.

For more information: [GevaTheatre.org](http://GevaTheatre.org).



# RESIDENT STAFF & ARTISTS

ELIZABETH WILLIAMSON (she/her)  
*Artistic Director*

JAMES HASKINS (he/him)  
*Executive Director*

## STAFF LEADERSHIP

FRANK DEL VECCHIO (he/him)  
*Controller*

JASMINE B. GUNTER (she/her)  
*Resident Director/  
Associate Producer*

SARAH HALEY (she/her)  
*Director of Marketing*

GITANA MIROCHNIK (she/her)  
*Director of Production*

THALIA SCHRAMM (she/her)  
*General Manager*

DELANNA STUDI (she/her)  
*2024/2025 Playwright in Residence*

BARON VAUGHN (he/him)  
*2023/2025 Playwright in Residence*

## ARTISTIC & MANAGEMENT

FIONA KYLE (she/her)  
*Literary Manager  
& Artistic Associate*

JILLIAN SAJDA (she/her)  
*Associate Company Manager*

NICOLE STEIN (she/her)  
*Executive Assistant*

## AUDIENCE SERVICES

JOHN HAMOLSKY (he/him)  
*Senior Manager of Guest Services*

TIM INTILI (he/him)  
*Director of Ticketing*

NICOLETTE VENTIMIGLIA (she/her)  
*Bar Manager*

ANDY GERMUGA (he/him)  
*Box Office Supervisor*

CARLEA GRANT (they/them)  
*Assistant Guest Services Manager*

NANETTE FALCHI (she/her)  
*Giftshop Services*

ALEX BERARDI (he/him)  
*SAM KAPLAN (they/them)*

HANNAH MORENO  
ASHLEY ROBB-CROCKETT (she/her)

BRENNAN SAUR (he/him)  
MARLI WORDEN (she/her)

Box Office Associates

MARK DI NITTO (he/him)

JOSIAH FICKESS  
JACE JACOBS  
CHRIS NOTHNAGLE  
KODY ROESE

JENNELL TROPIANO  
*House Managers*

MICHAEL FAMBRO  
AUBREY REYNOLDS  
J. IAN REYNOLDS  
MARY REYNOLDS  
BELLE RIVERA  
BRIAR ROSE  
CHARLES WECKWORTH V  
*Bartenders*

## CONNECTIVITY

CHELSEA LACATENA (she/her)  
*Interim Education Manager*

DEJA COTTON (she/her)  
*Connectivity Assistant - Education*

ERITREA HAILE  
*Connectivity Assistant - Engagement*

MELISSA COYLE  
JACK LANGERAK  
BRIGITT MARKUSFELD  
LEELA MUNSIFF  
JONATHAN NTHEKETHA  
ANDREA PARADA  
DELORES JACKSON RADNEY  
MARY MENDEZ RIZZO  
ELIANA ROWE

JEAN GORDON RYON  
MJ SAVASTANO  
TERRAN SCOTT  
DAVID SHAKES  
SHAWNDA URIE  
KAE WOODRUFF WILBERT  
PERRY GROUND,  
(ONONDAGA, TURTLE CLAN)  
ESTHER WINTER  
MARC DAVID WRIGHT  
*Artist-Educators*

SOFIA UBILLA (she/her)  
*Directing Fellow*

## COSTUMES

NOEL O'DAY (she/her)  
*Costume Shop Supervisor*

MICHAELA LINCOLN (she/her)  
*Cutter/Drapier*

REBEKAH CLOW (she/her)  
*First Hand*

SAMANTHA BURTON (she/her)  
*Costume Shop Assistant*

PAIGE WALDRON (she/her)  
*Wardrobe Supervisor*

## FINANCE & OPERATIONS

ANNA BECK (she/her)  
*Finance Assistant*

CLIFF LAMPLEY (he/him)  
*Facilities Manager*

LAURIE MASOOD (she/her)  
*Finance Volunteer*  
LAMONT TITUS (he/him)  
*Environmental Services*

## LIGHTING

DEREK A. MADONIA (he/him)  
*Lighting Supervisor*

CHRIS NIMICK (he/him)  
*Electrician/Light Board Programmer*

ESTHER WILKINS (she/her)  
*Electrician*

## DEVELOPMENT

SEAN BRITTON-MILLIGAN (he/they)  
*Event Manager*

SARAH MAYFIELD (she/her)  
*Development Coordinator*

## MARKETING

AMANDA RIEKSTINS (she/her)  
*Graphic Designer*

KYLE OSENBACH (he/they)  
*Creative/Marketing Assistant*

## PRODUCTION

JARED LEE MORGAN (he/him)  
*Stage Operations Supervisor*

JULIA BREGY (she/her)  
*Resident Stage Manager*

KEVIN GREGORY DWYER (he/him)  
*Resident Stage Manager*

NATE KELLY-DUMONT (he/they)  
*Crew Swing/Follow Spot Op*

## PROPERTIES

THERESA GRANGER (she/her)  
*Properties Supervisor*

BUTCH KANE (he/him)  
*Properties Artisan*

## SCENIC ARTISTRY

ALEX STOEHR (he/him)  
*Scenic Charge Artist*

GREY WARRICK (they/them)  
*Scenic Artist*

## SCENERY CONSTRUCTION

ELIAS KOCH (he/him)  
*Lead Carpenter*

SAM BURKOVICH (they/them)  
*Carpenter*

V. MILLER (they/them)  
*Carpenter*

HAZEL PENROSE (she/her)  
*Carpenter*

## SOUND

ANDREW MARK WILHELM (he/him)  
*Sound Supervisor*

ERINN FRANTZ-BUSH (she/they)  
*Audio Engineer*

## OVERHIRE

EMJAY MULLIN  
A2

IAN AVERY  
*Automation Operator*

KITTY LIPSKI (she/her)  
*Costume Crafts*

SIOBHAN HURLEY  
*Follow Spot Op*

HAWKE BOYD (they/them)  
MAX DIAZ (he/him)

WENDY KERR (she/her)  
RAINA PHIPPS (she/her)

COLI (he/him)  
*Painters*

KENNETH DEBOT  
MEGHAN CLARK

MICHELLE GARRETT  
*Production Staff*

SHANNON SCALLY (she/her)  
SOPHIE MCGUIRE (she/they)  
*Properties*

JULIET BESCH-TURNER (she/her)  
MAXLEY PARKER-COMBES (she/her)

KATHERINE MCCARTHY (she/her)  
*Stitchers*

ERIN HOLT (she/her)  
MARS MADISON (they/them)  
*Wardrobe/Dressers*

SARAH JOHNSON  
*Wardrobe Maintenance*

MADDIE WINTER (she/her)  
*Wig & Makeup Supervisor*

---

MARK CUDDY  
*Artistic Director Emeritus*



# CORPORATE, FOUNDATION & GOVERNMENT PARTNERS

*Geva Theatre gratefully acknowledges the following corporations, foundations and government agencies for their generous support.*

*(Donations listed are for the time period 10/1/23 to 9/30/24.)*

## **2024-2025 SEASON SPONSOR**

ESL Federal Credit Union

## **2024-2025 SEASON**

HONORARY PRODUCER

Dr. Dawn Lipson

## **\$50,000+**

William & Sheila Konar Foundation\*  
Nixon Peabody LLP  
The Blanche & Irving Laurie Foundation  
The Shubert Foundation

## **\$25,000- \$49,999**

Ameriprise- Nocon & Associates  
County of Monroe  
The Davenport-Hatch Foundation  
ESL Charitable Foundation  
Mary S. Mulligan Charitable Trust\*\*  
New York State Council on the Arts\*\*  
New York State Division of Homeland  
Security & Emergency Services  
WXXI

## **\$10,000 - \$24,999**

Buckingham Properties, LLC  
Daisy Marquis Jones Foundation  
Donald F. & Maxine B. Davison  
Foundation\*  
The Donna Fielding Memorial Fund  
Fred & Floy Willmott Foundation  
Glover-Crask Charitable Trust  
Heveron & Company, CPAs, PLLC  
KeyBank  
McCarthy's Tents & Events  
The Riedman Foundation  
Rubens Family Foundation\*  
Sinclair Broadcast Group  
St. John's  
Joseph & Irene Skalny  
Charitable Trust\*

Vision Automotive Group  
WARM 101.3 Radio  
WHEC-TV, LLC

## **\$5,000 - \$9,999**

Arts & Vitality Fund  
at the Community Foundation  
3 City Center  
Crisp Rochester  
iHeartMedia/Clear Channel  
Broadcasting  
The Joseph & Anna Gartner  
Foundation  
M&T Bank  
Madeline's Catering  
Max A. Adler Charitable Foundation  
RG&E\*\*\*  
Theatre Development Fund  
- NSYCA/TDF TAP Plus  
Volvo Cars Rochester  
Woods Oviatt Gilman  
WDXX FM

## **\$2,500 - \$4,999**

Buffalo Spree Publishing, INC.  
Center for Adolescent  
& Young Adult Health  
Cornell/Weinstein Family Foundation\*  
GP Flooring  
The Gouvernet Arts Fund at  
the Community Foundation  
Hildebrandt Family Artistic  
Enhancement Fund  
Labella Associates, P.C.  
The LGBT+ Giving Circle at  
the Community Foundation  
News 8 WROC-TV  
Rockcastle Florist  
WUHF-TV

## **\$1,000 - \$2,499**

Abilene Bar & Lounge  
Airigami  
Ames Anzalak Memorial Trust\*  
Audacity Operations, Inc.  
Century Liquor & Wines  
Entre Computer Services  
Excellus BlueCross BlueShield  
The Jane Parker Foundation  
The Queenan Foundation  
Sinclair Broadcast Group  
Tito's Handmade Vodka  
Wegmans Food Markets\*  
WHAM  
WRWM-FM

## **\$500 - \$999**

Actors' Equity Foundation  
Joan & Harold Feinbloom  
Supporting Foundation  
Get Caked Bakery\*\*\*  
Harris Corporation  
JAZZ 90.1  
Rohrbach Brewing Co.  
Vanguard Charitable Program  
Waldron Rise Foundation

*\*Education Supporter*

*\*\*Literary or New Works Supporter*

*\*\*\*Home for the Holidays Supporter*

We have made every effort to ensure the accuracy of these donor lists. However, if you see an error or omission, please accept our apology, and kindly call the Development Office at (585) 420-2049.

## Support The Magic of Geva

With your generous support, we can continue to stage remarkable performances that inspire and captivate audiences. Join us in safeguarding the future of world class live regional theatre. Donate to Geva Theatre today.

**Scan the QR Code with your phones camera  
for more information**



# ANNUAL FUND DONORS



*Geva Theatre thanks the following individuals for their generous contributions.*

*(Donations listed are for the time period 10/1/23 to 9/30/24.)*

*We are in the process of reimagining our Geva recognition and giving societies. Please look for changes in future Playbills.*

## LEADERSHIP CIRCLE

### \$50,000+

Dr. Dawn Lipson  
(Honorary Season Producer) †

### \$25,000 - \$49,999

Anonymous †  
Barbara LaVerdi  
& Bryan Donnelly †

### \$10,000-\$24,999

Anonymous  
Barbara & John Bruning †  
Philip & Sharon Burke  
David & Patricia Gardner †  
Dr. Tomás C. Hernández\*  
& Dr. Keith S. Reas  
Elizabeth Rennert\* †  
Elise Rosenfeld  
Eileen Amy Ryan  
Mimi & Sam Tilton †  
Krestie Utech †  
Charis & Rich Warshof †  
Joyce & William Weir  
Helen A. Zamboni  
& Steven I. Rosen †

### \$7,500-\$9,999

Patrick & Barbara Fulford †  
Bonnie Garner  
Richard & Kim Gray  
Joanna & Michael Grosodonia †  
Warren+ & Joyce Heilbronner  
Matthew López & Brandon Clarke  
Laurel Pace †  
Averil & Michael Rile  
Tom & Tammy Rogers  
Vicki+ & Richard Schwartz †  
Joan & Ken Slater †

### \$5,000-\$7,499

Peggy Boucher †  
Elizabeth Caldwell  
Betsy & John Carver †  
Gloria Culver & Joe Anderson  
Joan S. Dalberth  
The Dominas Family  
Dave & Nance Fiedler †  
Joanne Giannini †  
Norman Horton+  
The Geva Group- 40 Years  
Joe & Dale Klein  
Glenn & Nancy Koch  
Dan & Kiki Mahar  
Diane & Jerry McCue  
Michael & Frances Millard  
Dan & Jo-Ann O'Brien †  
Don & Robin Pulver  
Malcolm & Elaine Spaul  
Maggie & Charlie Symington †  
Susan & Robert Toussaint\*

## LEADERSHIP CIRCLE (cont.)

John S. Tritten  
Janet Tyler †  
Sherwin Weinstein  
& Linda Cornell Weinstein\* †

### \$2,500 - \$4,999

Anonymous (2)  
Daniel & Elizabeth Abbas  
Jeanine Arden-Ort  
& Dr. Daniel Ornt  
Robert D. Baden †  
Dennis & Mary Bassett  
Abby & Doug Bennett  
Carol & John Bennett  
Nelson A. Blish & Sharon Stiller  
Robert & Diane Boni  
David J. & Margaret M. Burns  
Margaret & Tim Busch  
Essie Calhoun-McDavid  
& Bernard McDavid  
Center for Adolescent  
& Young Adult Health  
Suzanne & Allan Chapman  
Barbara de Leeuw  
Ann Dozier & Guy Martin  
Hope Drummond  
Bill Eggers & Deborah McLean  
Peter Fackler & Kelly Barrett  
Stan & Reenie Feingold  
Richard & Joan Fenton\*  
Paul & Mary Fromm<sup>5</sup>  
Ellen Garfinkel  
Pam Giambone †  
Lori & Scott Green  
Christina Gullo & John A. Mueller  
Jane Hasselkus & Richard Edic  
Nan & Tom Hildebrandt †  
Jean Horton  
Dr. Jack & Harriette Howitt  
Emily Jones & Deborah Hughes  
Hon. Joan S. Kohout  
Paul & Lynne Kroner  
Abhas Kumar  
& Chetna Chandrakala  
Harold & Christine Kurland †  
Connie L. Leary  
Jennifer Leonard  
& David Cay Johnston  
Edith M. Lord  
Carol & Nick Love †  
Sarah Mangelsdorf & Karl Rosengren  
Annabelle Martin  
Lisa Martinez DeVinney  
Faheem & Laurie Masood  
Pamela McGreevy  
Peter & Beth Messner  
Barbara Mitacek\*\*  
Rhonda Noto  
Frank Novak & Paul Muto  
Shree Pandya

Karen & Don Pryor  
Dr. Gerald & Maxine Rosen  
Laura J. Sadowski  
Mrs. Carl & OJ Sahler  
Mr. Harold Samloff  
Dick Schieck & Joan Semrau  
Wolf & Elizabeth Seka  
Kelly & Kathleen Shea  
Gail Shoemaker  
Franceen Elias-Stein & Todd Stein  
James & Georgine Stenger  
Judy & Richard Stiehler  
Bob & Gayle Stiles  
Jim & Pam Stoffel  
Joshua Stubbe & Katie Baynes  
Wynndy Turner  
Nina Walker<sup>5</sup>  
Dr. Stephen R. Webb  
Carol J. Whitbeck  
John Williams  
Elizabeth Williamson  
& Jennifer Tennant  
Herb Winkelmann, Jr.

### \$1,500 - \$2,499

Catherine Angevine<sup>5</sup>  
Barbara Berman  
Mrs. Karen & Mark Blazey  
Mary & Brendan Brady<sup>5</sup>  
Ed & Sarah Bullard  
John & Linda Buttrill  
Keith & Celeste Cleary<sup>5</sup>  
Carol Condem+  
Susan & Frank Crego<sup>5</sup>  
Mr. Raymond Dreher  
& Dr. Elaine Tunaitis  
Louise W. Epstein<sup>5</sup>  
James & Kathy Farrar  
Sue & Jim Haefner  
Terry & Eileen Hartmann  
Nancy D. Hessler  
Victoria Kaminski  
Diane & Stephen LaLonde<sup>5</sup>  
Nanci Malin & Abe Weiss  
Steve Metzger  
Wes & Mary Micket<sup>5</sup>  
Nannette Noonon  
& Karl Wessendorf †  
William J. O'Connor Jr.<sup>3</sup>  
David & Marjorie Perlman  
Elke Phillips<sup>5</sup>  
Dr. Ramon & Judith Ricker  
Gary B. Schaefer  
Sharon & Leal Smith<sup>5</sup>  
Dr. Sidney & Barbara Sobel †  
Rev. Nancy D. Stevens  
& Mr. David L. Williams<sup>5</sup>  
Judy & Erik von Bucher  
John & Melanie Ward  
Philip & Anne Wehrheim



# ANNUAL FUND DONORS

Stephen Wershing  
Mrs. Kay R. Whitmore  
Charlotte J. Wright

## \$1,000 - \$1,499

Anonymous  
Jeanne M. Beecher<sup>2</sup>  
Eric & Marcia Birken  
Michael & Elizabeth Burns  
Mary Ellen Burris  
Mary Allison Callaway  
Catherine Callery & Michael Nazar  
Paula & Christopher Carter  
Katherine Cove<sup>3</sup>  
Doug & Stephanie Dickman  
Joan Feinbloom  
Ann & Steve Fox<sup>3</sup>  
Bob & Bobbie Freitag  
M. Lois Gauch  
Don & Natalie George  
George & Helen Greer Advised Fund

At The Community Foundation

Brigitte Gueldenpennig  
Elmer C. Hartman  
H. Larry & Dorothy C. Humm  
Ebets & Tom Judson<sup>3</sup>  
Judy & Norm Karsten  
Arnold Kovalsky  
Karen Kral  
Marcy & Ray Kraus  
Amy Libenson & Brett Shulman  
Patrick Macey & Jerry Casey  
Bruce & Eleanor McLeary  
Don & Roxann Muller  
Dr. Gary & Ruth Myers<sup>3</sup>  
Kathy & Ted Nixon  
Lois & John Palomaki  
Mary Jane Proschel  
Ken & Sheila Reasoner  
Robert & Hedria Saltzman  
Francie & Larry Schenck  
Neal & Pam Sherman  
Richard R. Spellicy  
Jacqueline Sperandio  
Sheree Usiatynski & David Evans  
Jim & Linda Varner  
Jean Carly Weaver  
Pierce & Elizabeth Webb  
Kathy Wheat & Fred Schulte  
Patty Yarmel  
Eric I. Zeller Fund at Rochester Area  
Community Foundation †

## \$500 - \$999

Anonymous  
Martin Abraham  
Pamela & Todd Allen  
David & Marca Anderson  
David & Jan Angus<sup>3</sup>  
Betsy & Gerald Archibald  
Gloria J. Baciewicz  
Deanna G. Baker\*\*  
Jim & Linda Barody  
Jim & Laurie Barr  
Jeff & Kathy Bowen<sup>3</sup>  
Stephanie Caffera

Ed & Maggie Cavalier  
Bill Chandler  
John & Alison Currie  
Dan & Jody DiLoreto  
Terry Doherty  
Victoria Doyle  
Janice B. Durfee  
Lynn & Pam Eberhardt  
Marjorie & Stephen Elder  
Sherman & Anne Farnham  
Lynn & Neil Farrar<sup>3</sup>  
Andrea & Richard Feldman  
David & Anne Ferris  
Elizabeth Fisher  
Richard Galvin  
The Gill Family Fund  
Ellen Goldenberg  
William & Susan Gornall  
Sharon Gray  
Joe & Linda Hanna  
Carol K. Hardy  
Brid & Molly Hedges  
Katherine Herrmann  
A. Dirk & Linda Hightower  
John & Barbara Holder<sup>3</sup>  
Dan & Sandy Hollands<sup>3</sup>  
Audrey Holly  
Louise D. Holmes  
John & Bonnie Hood\*  
Douglas & MaryAnne Jones<sup>3</sup>  
Cornelia Kamp  
Michael Keefe & Joann Surre-Keefe  
Karen & Eugene Kehoe<sup>3</sup>  
Edward E. Klehr<sup>2</sup>  
Mark & Mona Friedman Kolko  
Ellen & Charles Konar  
Michael & Marcy Kucharski  
Werner & Susan Kunz  
Kathleen & Alfred Laitenberger\*  
Thomas & Connie Lathrop  
Doris & Austin Leve  
Meg & Bill Lloyd<sup>2</sup>  
Christopher & Susan Luedde  
F.M. Paul Lyons  
Thomas & Sandra Madejski<sup>3</sup>  
Massie Family Fund at Rochester  
Area Community Foundation  
Thomas & Betsy Matthews  
Judie & George Mayo  
H. Winn McCray  
Ralph & Martha Meyer  
Daniel M. Meyers  
Sanford & Jill Miller  
Stacey Miller  
Susan & J. Scott Miller  
Jonathan Mink & Janet Cranshaw  
Emily Neece & Alan Ziegler  
Helen Newman  
Dr. Alan Nye  
& Nancy BB Meyer-Nye  
Marie & Donald Oakleaf<sup>2</sup>  
Vinny Orlindini  
Eric & Penelope Pankow  
Marian Payson & Helen Wiley  
Terry Platt  
Thomas & Nancy Poeth<sup>3</sup>

Dr. Brock Powell  
Marjorie Power  
Mr. & Mrs. Andrew Publow  
Ransford Family Charities  
Abby & Josh Reinhard  
Valerie & Stefan Reuss  
John Rodriguez  
Steve Rosen & James Wood  
Deborah Rubens  
Paul Schaeffer  
Caroline Schultz  
Jim & Daria Shaw  
Joseph E. Simpson  
Cliff Smith & Bernie Todd Smith  
Eleanor Stauffer  
Richard & Sandy Stein  
Rob & Janet Stewart  
Edward Tanner & Elizabeth Treiber  
Meg & Tom Therkildsen  
Sue & Karl Thielking<sup>3</sup>  
Scott Turner  
& Mary Worboys-Turner  
Wayne & Anne Vander Byl  
Anne Wallace  
Benjamin & Sandra Wallace  
Jamie & Sally Whitbeck  
Susan & Paul Wilkens  
Kitty J. Wise  
Susan & Larry Yovanoff  
Shirley D. Zimmer-Kidd  
Ted & Marcia Zornow

## \$250 - \$499

Anonymous (3)  
Carol Adler  
Michael Amorese  
Bob & Dawn Auerhahn  
Virginia Bachelier & Skip Battaglia  
Lon Baratz & Joseph Arena  
Walter Beecher  
Matt Belanger & Carol McKenna  
Suzanne Bell & Chris Brown  
Linda M. Betstadt<sup>3</sup>  
Bette Blakeney & Jim Dulmage  
Nancy Bloom & Alan Cohen  
Dennis & Amy Boike<sup>3</sup>  
Patricia Bradley  
Patricia Brous & Edwin Lopez  
Ken & Kathy Brickell  
Lori Busch  
Jane Capellupo  
Jeannette Carra  
Harriet & Jeff Carter<sup>2</sup>  
Robert & Barbara Castle  
Nancy Castro  
Tony Cinquino  
Jack & Barbara Clarcq  
E. A. Claypoole  
Kathleen Cloonan  
Dennis & Sharon Conheady  
Toby Cook Family Fund  
Carol & Stuart Cooper  
Richard & Claire Damaske  
Joe & Judy Darweesh<sup>2</sup>  
Rachel & Jimmy DeGuzman  
Alice DeMallie

# ANNUAL FUND DONORS



Joseph DeRuyter<sup>2</sup>  
 Natalie Dickerson  
 Joan Dwyer  
 Samuel L. Edwards  
 & Judith K. Rickey  
 Gerald G. Estes  
 Trevor & Elizabeth Ewell  
 Robert & Cheryl Fehnel  
 Matthew Fleig  
 Barbara L. Frank  
 Lisabeth Frarey & Michael Christie  
 Bruce & Elizabeth Freeland  
 Gerald & Pamela Garavuso  
 Robert Goeckel & Gay Greene  
 Cynthia Goetzmann  
 Joy Goodman & John Sawyer  
 William & Ruth Grace  
 Richard & Kathy Grunow  
 Mary E. Haverfield<sup>2</sup>  
 A. Scott Hecker  
 Jeff & Ruth Hedin  
 Maureen+ & Ken Hendel  
 Donna Himmelberg  
 James & Betsy Hoefen  
 Ellen Horey-Thiede  
 James & Sherrill Ison  
 Mark Jacoby  
 Drs. Nadette Jacob & Jules Zysman  
 Carolyn Jones  
 Rabbi Alan & Jan Katz  
 Drs. Don & Nahoko  
 Kawakyu-O'Connor  
 Robert G. Kimmel  
 Dorothy Korn  
 David & Andrea Lambert  
 Richard & Linda Lawrence  
 John Lebens & Florence Higgins  
 Phillip & Susan Lederer  
 Thomas & Terrie Lee<sup>3</sup>  
 Litt Family Fund  
 Marcia Lowry  
 Jack & Sandra Maniloff  
 Patricia Marks  
 Gail Mazur  
 Tom & Emily McCall<sup>5</sup>

William McCleary & Maxine Long  
 Merri-Lou McKeever  
 Chris & Karen Mesolella  
 Richard & Mary Moglia-Cannon  
 David & Nancy Munson  
 Thomas & Ronnie Nescot  
 Charlie Owens  
 Phil Palumbo  
 Maureen & Marty Palumbos  
 Rick Papaj  
 Dolores F. Parlato  
 Yonite Pentelton  
 Thomas Petrillo & William Reamy  
 Louisa Pierson  
 Dr. Lee D. Pollan  
 Craig & Becky Prophet  
 Edwin & Roberta Przybylowicz  
 Mark Raeside  
 James G. Reed  
 Nancy Rice  
 Dawn Riedy & David Berg  
 Ann & Robert Riemer  
 Michael & Linda Riordan  
 John Robb & Mary Jo Karpenko  
 Russell R. Roberts  
 Raul Rodriguez  
 Charles & Carolyn Ruffing<sup>5</sup>  
 Gerry & Fred Sauter  
 Kenneth Schirmuhly  
 Jon & Katherine Schumacher<sup>3</sup>  
 Anthony & Gloria Sciolino  
 Scott Sherin  
 Norm & Jane Silverstein  
 Greg & Karen Sloan  
 Carolyn Smith  
 Jim & Marie Sorrentino  
 Ann H. Stevens  
 & William J. Shattuck  
 Thomas & Linda Sullivan  
 Thomas & Rose Swartz  
 Robert H. Thompson  
 & Bonnie DeVinney  
 Helen Urzetta Tortorici  
 Charles & Marian Turner  
 Sandra Vallot

Patricia H. Wehle  
 Dana Weiss & Carol Ebersole-Weiss  
 Paul Whitbeck & Melinda Moyer  
 John & Laurie Witmeyer<sup>2</sup>  
 Richard & Caroline Yates  
 Eric Zeise & Ellen Henry  
 Charlie & Judy Zettek<sup>2</sup>

## Other Donors included in Visionary Society †

Anonymous (2)  
 Robert August  
 Helen H. Berkeley  
 Joyce & Allen+ C. Boucher  
 Sergio & Mary Ann Esteban  
 The Gouvernet Arts Fund at The  
 Community Foundation  
 Gwendolyn Hoffberg  
 Jack & Barbara Kraushaar  
 Dan & Nancy Loughran  
 Jeanne B. McHugh+  
 Mike & Mary Ninnie  
 Jane Parker & Fran Cosentino  
 Wolfgang Pfenzenmaier  
 Stephen I. Rosenfeld+  
 Kim & Janet Tenreiro  
 Elizabeth Vanhorn+  
 Deborah Wilson

† Donors whose lifetime  
philanthropic commitment totals  
over \$100,000

<sup>2</sup>Donors who have made a three-  
year commitment to Geva's Annual  
Fund

\*Education Supporters

\*\*Literary or New Works Supporter

+Deceased

*We have made every effort to ensure the accuracy of these donor lists. However, if you see an error or omission, please accept our apology, and kindly call the Development Office at (585) 420-2049.*





*Geva Theatre gratefully recognizes the following generous donors who have made a three-year commitment of \$2,500 or more to Geva's Annual Fund.*

*(Donations listed are for the time period 10/1/23 to 9/30/24)*

Anonymous  
Daniel & Elizabeth Abbas  
Jeanine Arden-Ornt  
& Daniel Ornt  
Katie Baynes & Joshua Stubbe  
Carol & John Bennett  
Nelson A. Blish & Sharon Stiller  
Robert & Diane Boni  
Peggy Boucher  
Barbara & John Bruning  
Philip & Sharon Burke  
David J. & Margaret M. Burns  
Margaret & Tim Busch  
Essie Calhoun-McDavid  
& Bernard McDavid  
Betsy & John Carver  
Center for Adolescent  
& Young Adult Health  
Gloria Culver & Joe Anderson  
Ann Dozier & Guy Martin  
Hope & Lance Drummond  
William Eggers  
& Deborah McLean  
Franceen Elias-Stein  
& Todd Stein  
Peter Fackler & Kelly Barrett  
Richard & Joan Fenton  
Dave & Nance Fiedler  
Paul & Mary Fromm  
Patrick & Barbara Fulford

Bonnie Garner  
Lori & Scott Green  
Joanna & Michael Grosodonia  
Christina Gullo  
& John A. Mueller  
Jane Hasselkus & Richard Edic  
Warren+ & Joyce Heilbronner  
Dr. Tomás C. Hernández  
& Dr. Keith S. Reas  
Jean Horton  
Norman Horton+  
Emily Jones & Deborah Hughes  
Paul & Lynne Kroner  
Abhas Kumar  
& Chetna Chandrakala  
Harold & Christine Kurland  
Barbara LaVerdi  
& Bryan Donnelly  
Jennifer Leonard  
& David Cay Johnston  
Carol & Nick Love  
Dan & Kiki Mahar  
Annabelle Martin  
Lisa Martinez DeVinney  
Faheem & Laurie Masood  
Diane & Jerry McCue  
Peter & Elizabeth Messner  
Michael & Frances Millard  
The Pace Family Fund  
Shree Pandya

Don & Robin Pulver  
Elizabeth Rennert  
Averil & Michael Riley  
Tom & Tammy Rogers  
Dr. Gerald & Maxine Rosen  
Drs. Carl & OJ Sahler  
Harold & Judy Samloff  
Richard & Vicki+ Schwartz  
Gail Shoemaker  
Joan & Ken Slater  
James & Georgine Stenger  
Bob & Gayle Stiles  
Jim & Pam Stoffel  
Maggie & Charlie Symington  
Mimi & Sam Tilton  
Susan & Robert Touhsaent  
John S. Tritten  
Janet M. Tyler  
Krestie Utech  
Charis & Rich Warshof  
Sherwin Weinstein  
& Linda Cornell Weinstein  
Joyce & William Weir  
Carol J. Whitbeck  
John Williams  
Elizabeth Williamson  
& Jennifer Tennant  
Helen A. Zamboni  
& Steven I. Rosen

*We have made every effort to ensure the accuracy of these donor lists. However, if you see an error or omission, please accept our apology, and kindly call the Development Office at (585) 420-2049.*



**COBBLESTONE**  
CAPITAL ADVISORS

- Investment Management
- Wealth Management
- Private Investments
- Family Office

**(585) 473-3333**

\*Investment in securities may result in loss of income and/or principal.



## TRIBUTES

### IN MEMORY OF ...

**Judy Andreano**  
Marilynn Andreano  
Anne Hilliard  
Marquerite  
Martellotta

**Audrey Ashley**  
Mimi & Sam Tilton

**Jeanne C. Baden**  
Joanna & Michael  
Grosodonia

**Jane Biggs**  
Sharon & John Carr

**Dennis Bookshester**  
Dr. Gerald & Maxine  
Rosen

**Carol Browne**  
Stephen Slade

**Judy Buchanan**  
Raymond Buchanan

**Lorie Chavkin**  
Robert Chavkin

**Dr. Salvatore  
Dalberth**  
Joan S. Dalberth

**Bill C. Davis**  
Patricia Marks

**Trish & Teale  
Dominas**  
Love, Glen

**Linda Doty**  
Peter & Shannon  
Reynolds

**Morris Eaves**  
Dr. Gerald & Maxine  
Rosen

**Richard H.  
Eggleston**  
Louise M. Eggleston

**Marlene Elkin**  
Ross Elkin

**Erwin & Kathleen  
Englehart**  
Carolyn Jones

**Peggy Ervin**  
Mark & Nicki Cottle

**Linda W. Ferris**  
Frank Ferris

**Marilyn Galley**  
Joseph Galley

**Suzanne Gouvernet**  
Kate Bennett  
Mary Bishop  
Donna Borgus  
Susie Cohen  
Shirley Dawson  
Bonnie Garner  
Elinor Grinols  
Joanna & Michael  
Grosodonia  
Pamela & Ken Hines  
Deborah Lattime  
Carol & Nick Love  
Marcia Lowry  
Staffan & Lee  
Lundback  
Shree Pandya  
Susan Rogers  
Jim & Daria Shaw  
Peter & Deby  
Springer  
Ingrid Stanlis  
Maggie & Charlie  
Symington  
Mimi & Sam Tilton  
Scott Turner  
& Mary  
Worboys-Turner  
John Williams

**Klaus  
Gueldenpfennig**  
Brigitte  
Gueldenpfennig

**Maureen Hendel**  
Kenneth Hendel

**Betty & Morris  
Herman**  
Phillip & Susan  
Lederer

**Norman Horton**  
William & Laura  
Garrison  
Joanna & Michael  
Grosodonia  
William McGuigan  
Carol & Nick Love  
David & Marjorie  
Perlman  
Laura J. Sadowski  
John Williams

**Dee Kamp**  
Cornelia Kamp

**Sharon Kimmel**  
Robert Kimmel

**Ed Kneetopkse**  
Sharon & Carl Wheat

**Ann G. Kubiak**  
John Schell

**Adeline Lesk**  
Dr. Gerald & Maxine  
Rosen

**John Meyer**  
Dr. Gerald & Maxine  
Rosen

**James Miles**  
Dr. Gerald & Maxine  
Rosen

**JoAnne Mueller**  
Jodi Barbera  
Lynn Davison  
Kathy Gullo  
Angela Kakar  
JoAnn Kane-DeMott  
Dorothy Korn  
Valerie Priester  
Susan Reeb  
Ivana Ripley  
Linda Rubens  
Jacqueline Ryan  
Sheridan Hill  
Elementary School  
Villa of Hope

**John Meyer**  
Dr. Gerald & Maxine  
Rosen

**James Miles**  
Dr. Gerald & Maxine  
Rosen

**John Meyer**  
Dr. Gerald & Maxine  
Rosen

**James Miles**  
Dr. Gerald & Maxine  
Rosen

**JoAnne Mueller**  
Jodi Barbera  
Lynn Davison  
Kathy Gullo  
Angela Kakar  
JoAnn Kane-DeMott  
Dorothy Korn  
Valerie Priester  
Susan Reeb  
Ivana Ripley  
Linda Rubens  
Jacqueline Ryan  
Sheridan Hill  
Elementary School  
Villa of Hope

**Jeanette Neuer  
Hauck**  
Philip Neuer

**Charles Osgood**  
Dr. Gerald & Maxine  
Rosen

**Kathleen Piper**  
Travis Piper

**Jay Ross**  
Dan Ross

**Vicki Schwartz**  
Joanna & Michael  
Grosodonia  
Mimi & Sam Tilton

**Maureen Margaret  
Sexton**  
Janice A. Geddes  
Dawn Mastrogiacomio

**Murphy Shapiro**  
Mary Fenton

**Bea Siegel**  
Dr. Gerald & Maxine  
Rosen

**Michael Slade**  
Carol & John Bennett  
David Garretson  
Abigail Packard  
Katherine Smith

**Barbara Szulgit**  
Thomas & Virginia  
Mulford

**Louise Vigdor**  
Joanna & Michael  
Grosodonia  
John Williams

**Margene Wagstaffe  
& Lois Anderson**  
Marcy & Ray Kraus

**Catherine Warren  
Tanner**  
Edward C. Tanner &  
Elizabeth A.  
Treiber

**Robert Whitmore**  
Mary Ann Whitmore

*We have made every effort to ensure the accuracy of these donor lists. However, if you see an error or omission, please accept our apology, and kindly call the Development Office at (585) 420-2049.*



# TRIBUTES

## IN HONOR OF ...

### **Sandra Bills**

Dawn Hampsey

### **Laura Chekow**

Ellen Goldenberg  
Raymond & Pat Naber

### **Clients & Friends of 20/20 Wealth Solutions**

Scott Zakalik

### **Linda Cornell Weinstein**

Roberta Borg  
Isobel Goldman  
Carol & Nick Love

### **Renata Corrado-Green**

Katie & Matthew Comeau

### **Hope Drummond**

Clarice Brown  
Velta Rouchon

### **Bonnie Garner**

Patti Donoghue

### **Joanna & Michael Grosodonia**

Shree Pandya

### **Christina Gullo**

Carol & Nick Love  
Gerianne Puskas  
Shree Pandya

### **Lisa Helen Hoffman**

William & Priscilla Petersen

### **Barbara LaVerdi**

Rob & Janet Stewart

### **Carol Love**

Shree Pandya  
Cassandra Ramos

### **Christopher Mannelli**

Shree Pandya

### **Ligaya Nocon**

Linda Epstein & Robin  
Benmergui

### **Nannette Nocon**

Nancy Sverdlík

### **Shree Pandya**

Maggie & Charlie Symington

### **Maxine Rosen**

Clare Rotenberg

### **Laura J. Sadowski**

Patti Donoghue  
Maggie & Charlie Symington

### **Alana Sansone**

Shree Pandya  
Maggie & Charlie Symington

### **Jeanne Sloan**

Greg & Karen Sloan

### **Mimi & Sam Tilton**

Louisa Pierson

### **John Williams**

Charlie Owens  
Maggie & Charlie Symington

### **Elizabeth Williamson & Jen Tennant**

Daniel M. Meyers  
University of Rochester

PROGRAM BOOK PRODUCED BY

**Buffalo Spree**  
Publishing, Inc.

PRESIDENT & CEO  
Sharon Levite

VICE PRESIDENT/CHIEF REVENUE OFFICER/PUBLISHER  
Barbara E. Macks

EXECUTIVE EDITOR Meagan Walker Doptad

MANAGING EDITOR Donna Hoke

CREATIVE DIRECTOR Jean-Pierre Thimot

#### ART & PRODUCTION

##### SENIOR GRAPHIC DESIGNERS

Joshua Flanigan

Kim Miers

Nicholas Vitello

##### GRAPHIC DESIGNERS

Rachel Kaznica

Tamarie Mitrovich

#### TO ADVERTISE

buffalospree.com or call

**716-972-2250**



*Geva Theatre gratefully acknowledges the generosity of the following friends of the theatre who have formalized their commitment to Geva in their estate plans:*

Anonymous (2)  
 Jeanne M. Beecher  
 Helen H. Berkeley  
 Allen C. Boucher\*  
 Beverly T. Bowen\*  
 John & Betsy Carver  
 Derek & Janice Chapman\*  
 Glenn & Rebecca Fadner  
 Donna Fielding\*  
 Elizabeth Fisher  
 David & Linda Friedman  
 Jay+ & Betsy T. Friedman  
 Patrick & Barbara Fulford  
 Julia Grant  
 Jean Edgcumb Groff\*  
 Richard & Marilyn+ Hare  
 Warren\* & Joyce Heilbronner  
 Drs. Tomás D. Hernández  
 & Keith S. Reas

Nancy D. Hessler  
 David L. Hoffberg\*  
 Norman Horton+  
 Nancie R. Kennedy\*  
 Jack & Barbara Kraushaar  
 Drs. Dawn & Jacques+ Lipson  
 Richard Malinich\*  
 Jeanne B. McHugh\*  
 Ernestine W. Murray Chandler\*  
 Eunice\* & Donald Naulin  
 Emily Neece & Alan Ziegler  
 Dolores B. Owens\*  
 Dr. Ramon & Judith Ricker  
 Marie Roberts  
 Dr. & Mrs. Harry Rosen  
 Stephen I. Rosenfeld\*  
 Laura J. Sadowski  
 James G. Scanzaroli\*  
 Richard & Vicki\* Schwartz

Joan & Ken Slater  
 Ms. Rusty Smith\*  
 Frederick & Mabel Stehler+  
 Maggie & Charlie Symington  
 Kim & Janet Tenreiro  
 Janet & John R. Tyler, Jr.\*  
 Brad VanAuken  
 Elizabeth VanHorn\*  
 Sherwin Weinstein &  
 Linda Cornell Weinstein  
 Henry W. Williams, Jr.\*  
 Catharine J. Wise  
 John & Laurie Witmeyer  
 Robert B. Wolf  
 & Mary Alice Wolf\*  
 Helen A. Zamboni

\* Gift has been realized  
 +Deceased

We would be pleased to know if you have included Geva in your estate plans so that we may appropriately honor you.

For information about the Legacy Society, please contact the Development Office at (585) 420-2049.

*We have made every effort to ensure the accuracy of these donor lists. However, if you see an error or omission, please accept our apology and kindly call the Development Office at (585) 420-2049.*

Geva's Audio Description Program is named after  
**LISA HELEN HOFFMAN**

who fearlessly advocated for access to the arts for individuals who are blind or low vision.  
 She will always be remembered.  
 October 2019

# HOME for the Holidays

A special performance of Geva's *A Christmas Carol* honoring Rochester's active service members, veterans, and military families on Thursday, December 26, at 7:00pm.

**Please help us keep Home for the Holidays free.**

**Scan here to donate:**



Thank you for supporting an event that means so much to so many.





# CURTAIN CALL SUPPORTERS

*Geva Theatre thanks the following donors for their generous contributions to Curtain Call 2024, the theatre's annual fundraising gala.*

## PRESENTING SPONSOR

Nocon & Associates  
A private wealth advisory practice of Ameriprise Financial Services, LLC.

## DIAMOND SPONSOR

ESL Charitable Foundation

## PLATINUM SPONSOR

Barbara LaVerdi & Bryan Donnelly  
Madeline's Catering LLC  
RG&E

## GOLD SPONSOR

Philip & Sharon Burke  
Sam & Mimi Tilton  
GP Flooring Solutions

## SILVER SPONSOR

LaBella & Associates  
Dennis & Mary Basset  
Barbara Bruning & Hope Drummond  
East House  
Diane McCue  
Robert Neale & Richard Porlier  
Helen Zamboni

## BRONZE SPONSORS

Janine Arden-Ornt & Dr. Daniel Ornt

## PADDLE CALL DONORS AND ADDITIONAL SUPPORT

*(Donors of \$250 or more)*

Anonymous  
M&T Bank  
Martin & Nancy Abraham  
Jim & Laurie Barr  
Jacob L. Barragato  
Dennis & Mary Basset  
Patricia Beaumont & Len Swain  
Kenneth & Kathleen Brickell  
Marjorie Bricks  
Barbara Burke  
Philip & Sharon Burke  
Michael & Elizabeth Burns  
David J. & Margaret M. Burns  
Margaret & Tim Busch  
Lori Busch  
Paula & Christopher Carter  
Shirley Cirillo  
Michael Clark  
Keith & Celeste Cleary  
Sherwin Weinstein & Linda Cornell Weinstein  
Frank & Susan Crego  
Barbara de Leeuw  
Rachel & Jimmy DeGuzman  
Alice DeMallie

Terry Doherty  
Victoria Doyle  
Joan Dwyer  
Dave & Nance Fiedler  
Carolyn Foti  
Marilynn Garbarino  
Bonnie Garner  
Bill Garrison  
Jon & Kathy Gorom  
Richard and Sharon Gray  
Joanna & Michael Grosodonia  
Richard & Kathy Grunow  
Christina Gullo & John A. Mueller  
Jane Hasselkus & Richard Edic  
Katherine Herrmann  
Laura Hopps  
Sarah Kroetz  
Abhas Kumar & Chetna Chandrakala  
Thomas & Connie Lathrop  
Barbara LaVerdi & Bryan Donnelly  
Michelle Lee  
Jennifer Leonard & David Cay Johnston  
Lisa Martinez DeVinney  
Chris & Karen Mesolella  
Peter & Elizabeth Messner  
Peg Meyers  
Sally Millick  
Mary A. Mills  
Ligaya Nocon  
Nannette Nocon & Mr. Karl Wessendorf  
Rhonda Noto  
Dan & Jo-Ann O'Brien  
William J. O'Connor Jr.  
Vinny Orlandini  
Tom & Peggy Osenbach  
Charlie Owens  
Rick Papaj  
Yonite Pentelton  
Robert & Maria Postgate  
Tony Quercia  
Raul Rodriguez  
Marlene Rogalski  
Christine Schaller  
Craig Shaw  
Kelly & Kathleen Shea  
Scott Sherin  
Pam & Neal Sherman  
Malcolm & Elaine Spaul  
Kiley Sullivan  
Sam & Mimi Tilton  
Wyndy Turner  
Stephen R. Webb  
Doug & Judith A. Webster  
Carol J. Whitbeck  
John Williams  
Susan Yovanoff  
Louis Zambelli

## IN KIND SUPPORT

Airgami  
Billsboro Winery  
Century Liquor and Wines  
Conolly Printing  
Empire Digital Signs  
Entre Computer Services  
Rockcastle Florist  
Gourmet Goodies  
Genesee Brewing Company  
Madeline's Catering LLC  
Mundell Modern Pixels  
Photography  
Tito's Handmade Vodka

## AUCTION & WINE DONORS

*(Donors of \$250 or more)*  
MAE Beads  
Rochester Red Wings  
Ape and Canary  
Ethan Allen Pittsford Design Studio  
Pinnacle Wine & Liquor  
Wines for Humanity  
Drag Me to the Stage LLC  
Locust Hill Country Club  
California Closets  
The Strong National Museum of Play  
Rochester Gay Men's Chorus  
ImageOut  
L'Objet Wines  
Hana Pilates & Bodyworks  
Iron Smoke Distillery  
Landmark Society of Western New York, Inc.  
New York Kitchen  
Tito's Handmade Vodka  
Finger Lakes Opera, Inc.  
Susan B. Anthony Museum & House  
Scott Miller Salon & Spa  
Billsboro Winery  
Tantalo Fine Portraits  
House of Guitars  
Corn Hill Navigation  
Billbravago LLC  
Black Button Distilling  
Madeline's Catering LLC  
Century Liquor and Wines  
Body20-Pittsford  
Philip Burke  
Margaret Busch  
Sam & Mimi Tilton  
Paul Guglielmo  
Carol Love  
Nannette Nocon  
Charlie Owens  
Shree Pandya  
Helen Zamboni

## GOVERNMENT SUPPORT

*Geva Theatre gratefully acknowledges the support of*



The New York State Council on the Arts, with the support of Governor Kathy Hochul and the New York State Legislature



The County of Monroe and the County Executive Adam Bello



Empire State Development - Division of Tourism - I LOVE NEW YORK

---

# celebrating the arts that bring us together.

---

Whether on the page, on the screen, on the stage, or anywhere else, art brings life to life. KeyBank is grateful for the passion and creativity that inspire and enrich all our lives, and we're proud to support the arts.

Thank you, Geva Theatre Center, for making a difference.

**KeyBank**   
**Opens Doors.**<sup>®</sup>

YOUR HOLIDAY FLORAL

*destination.*



*Stacy K*

FLORAL | HOME | DECOR

43 RUSSELL ST. | ROCHESTER  
WWW.STACYKFLORAL.COM



DIANE PRINCE  
FURNITURE  
&  
GIFTS

*Furniture Sale  
Now in Progress*

*Your Spot For All  
Your Holiday Shopping*

92 S. Main St., Fairport 585.388.0060



**Give the Gift of Geva**

**2-TICKET VOUCHER**

**\$100**

REG.  
\$130

**SALE PRICE THROUGH DEC 31**

Vouchers may be redeemed for two complimentary tickets to any Geva performance. Valid for one year starting Jan 1, 2025.

**PURCHASE NOW**

GevaTheatre.org | 585-232-4382

# For the things you love to hear.



  
**HART**  
HEARING  
CENTERS  
HartHearing.com



## OPEN HOUSE

K to Grade 12  
January 12, 2025  
at 2 pm

Register at  
[HarleySchool.org](https://HarleySchool.org)



**JOYFUL** Boundless  
**LEARNING.** Potential.



The Harley School





IMAGINE  
DRINKS WITH FRIENDS



IMAGINE  
MORNING YOGA



IMAGINE  
A DIP IN THE POOL



IMAGINE  
THE PERFECT MEAL



# IMAGINE YOUR POSSIBILITIES

Imagine living your best life at Cloverwood! Five-star dining, wooded nature trails, state-of-the-art movie theater, engaging cultural arts, evening cocktails around the fire pit, live music. *It's all happening at Cloverwood! All we are waiting for is you!*

For more information visit  
[cloverwood.org](http://cloverwood.org) or call 585.248.1135.



CLOVERWOOD  
active retirement living





# A different approach to primary care medicine.

Convenient access. Personalized attention.

Personal Medicine of Rochester's physicians are dedicated to serving patients with a high standard of care and all the attention you deserve.

## Benefits you can count on for an affordable membership fee

- See a physician at each visit and never feel rushed.
- Same day or next day appointments.
- Urgent need after hours? Contact your doctor directly.
- Comprehensive annual health screenings that surpass standard checkups.
- Personalized wellness plan with the resources you need to achieve your goals.

*Now accepting new patients, age 18+ for a limited time.*



*James Budd, M.D.*



**Personal Medicine  
of Rochester**



*Mitchell Ehrenberg, M.D.*

PersonalMedicineRoc.com • (585) 385-3372 • Pittsford, NY

